



THE PENINSULA
CHICAGO



LOCATION

Just steps away from the heart of the “Magnificent Mile,” The Peninsula Chicago is the premier location for luxury shopping. The Lobby is lined with elegant vitrines, offering our guests even more opportunities to take advantage of the most exclusive shopping in the city.





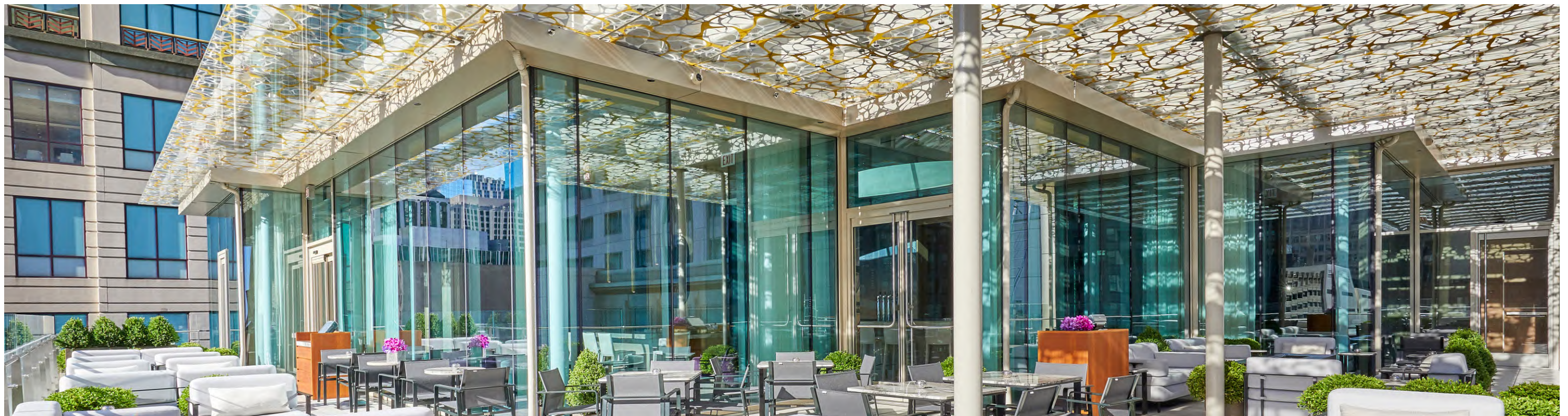
CURRENT VITRINE PARTNERS

- Haute Carat
- Burdeen's Jewelry
- Buccellati
- Sidney Garber
- Van Cleef & Arpels
- Audemars Piguet
- Panerai
- Harry Winston
- Krigler
- Marshall Pierce & Company
- IWC
- Tod's



HOTEL FOOT TRAFFIC

- Over 141,000 rooms occupied in 2024
- Over 417,000 guests dined at our award-winning restaurants in 2024
- Over 87,000 business professionals attended meetings at our property in 2024
- Over 25,000 guests visited The Spa for treatments in 2024
- Over 40k followers on Instagram
- Over 50k followers on Facebook



F & B OUTLET OVERVIEW

Z Bar

An exciting space located high above Chicago's iconic Michigan Avenue, offering beautiful city views, an array of globally inspired cocktails, boldly flavored food and a playlist of tunes from around the world.

The Lobby

Where magnificent 20-foot floor-to-ceiling windows (and regular live music performers) provide a stunning backdrop for sophisticated Afternoon Tea on weekends and contemporary American cuisine served all day.

Shanghai Terrace

A chic, atmospheric dining space offering a menu of creative, award-winning Shanghaiese and Cantonese dishes. During warm weather months, guests can also dine and enjoy Asian-inspired cocktails on an outdoor terrace overlooking the city.

Pierrot Gourmet

A European-style café and bistro serving light seasonal fare for breakfast and lunch; coffees; and wines by the glass. An alfresco dining patio is available during warm weather.



SPECIALTY BRUNCHES



A F T E R N O O N T E A



HOTEL FUNCTION SPACE

Grand Ballroom

Expansive • Breathtaking

The Peninsula Chicago's most spacious and formal venue, Grand Ballroom offers stunning views of the Magnificent Mile from floor-to-ceiling windows, cutting-edge audiovisual technology, and an elegantly furnished space that can be configured to a variety of set-ups to meet every occasion whether business or social. The adjoining terrace and foyer are perfectly suited for pre or post-event cocktail receptions, or catering service from the hotel's world-class culinary staff.

Millennium Park

Sophisticated • Exquisite

The sophisticated and intimate environment of Millennium Park creates an ideal venue for mid-sized events, from business meetings to wedding celebrations. The pairing of classic and modern touches, from a stunning crystal chandelier, beautiful wood grain inlays and a marble feature wall, ensures an exquisite ambiance as the hotel's newest place for a meeting or event.

Avenues Ballroom

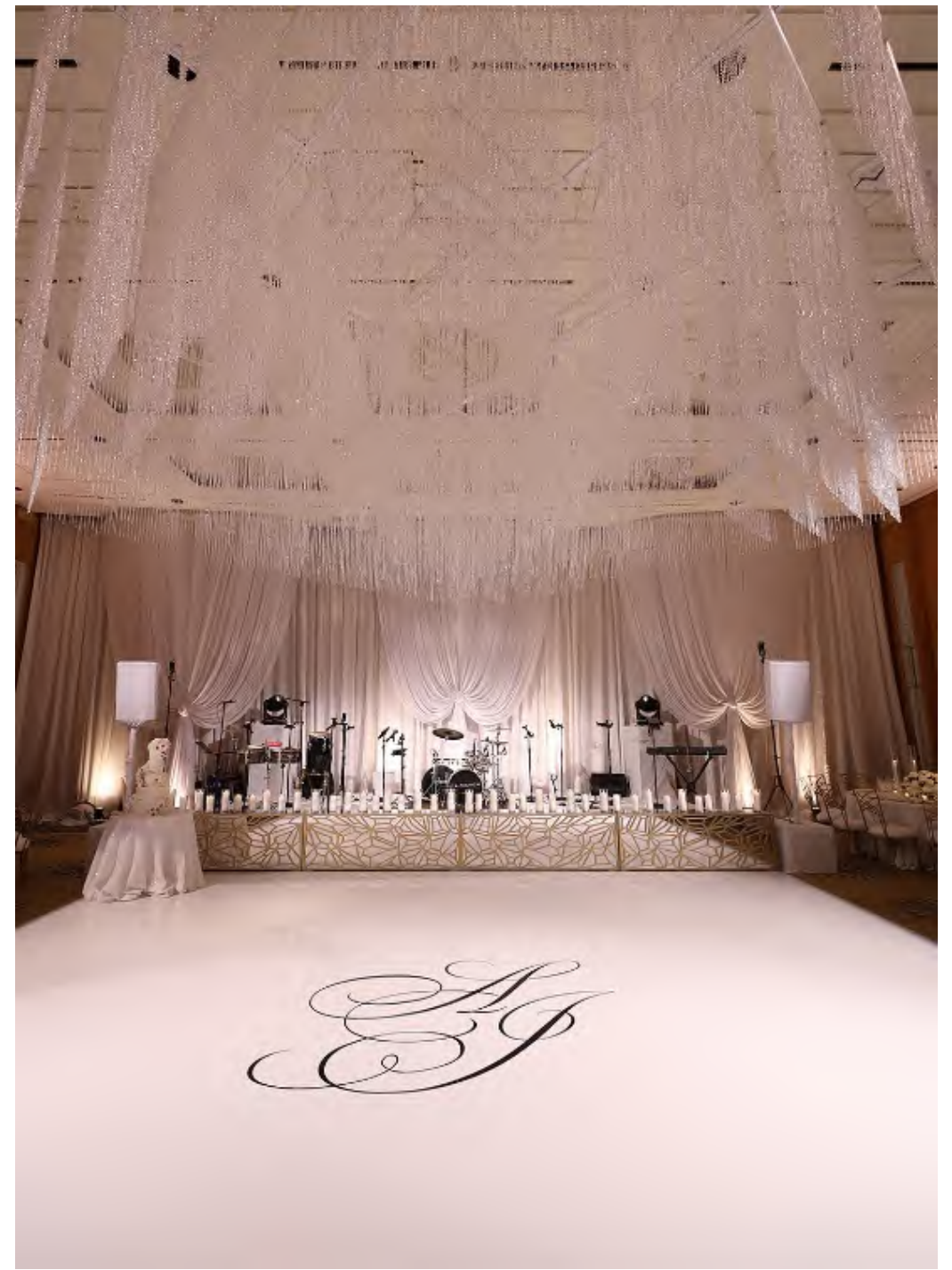
Contemporary • Refined

With its refined décor, coffered ceilings, discreet crystal chandeliers, and spectacular views of Water Tower Park and Michigan Avenue, this event venue provides a sophisticated environment for corporate events, dinner receptions, board meetings or social events.

Water Tower Park

Elegant • Adaptable

Located on the 6th Floor, Water Tower Park features warm, elegant décor with floor-to-ceiling windows overlooking its namesake, Chicago's famous Water Tower Park. This adaptable space can be divided into two meeting rooms and can be customized with the assistance of a Conference Services Manager to suit any occasion.



HOTEL FUNCTION SPACE

Butch O'Hare

Intimate • Traditional

The Butch O'Hare boardroom provides an intimate venue for board meetings or team brainstorming sessions. This venue offers an impressive permanent board room table and executive leather chairs for a comfortable and enjoyable meeting space.

Lincoln Park

Classical • Distinguished

The tasteful, gilded décor of Lincoln Park provides the perfect setting for cozy yet elegant functions or corporate events.

Bessie Coleman

Tasteful • Intimate

The neutral tones and tasteful ambiance of Bessie Coleman has made this intimate space a popular choice for small meetings or as a temporary office for on-site meetings. Located on the 6th floor of the hotel, Bessie Coleman has access to a pre-function space ideal for welcoming guests or refreshment breaks.

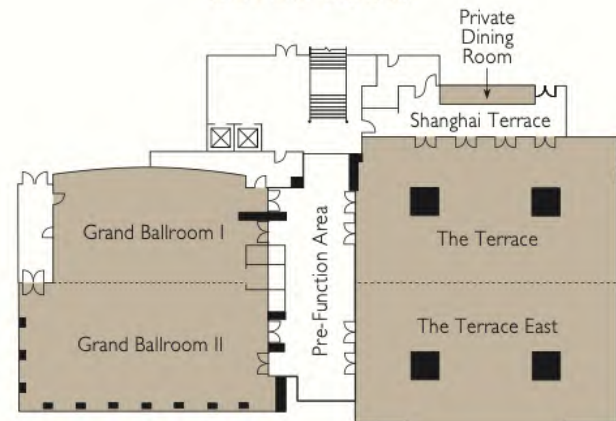
Grant Park

Versatile • Refined

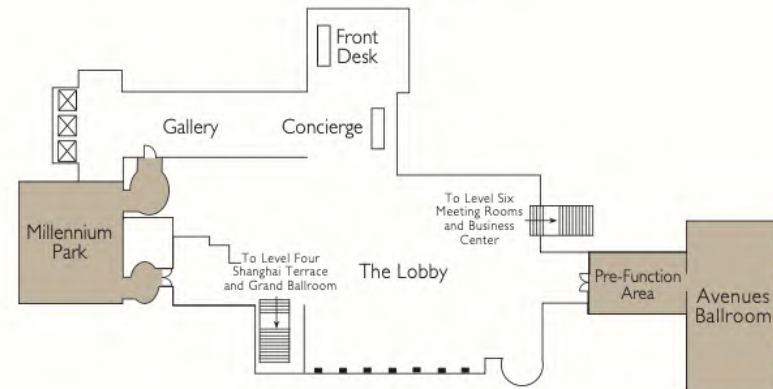
The versatile Grant Park can be divided into two separate spaces for more intimate events, or combined for a larger area ideal for conferences, product launches or cocktail events. The room opens to a sophisticated pre-function area, perfect for welcoming guests and for refreshment breaks.

FLOOR PLANS

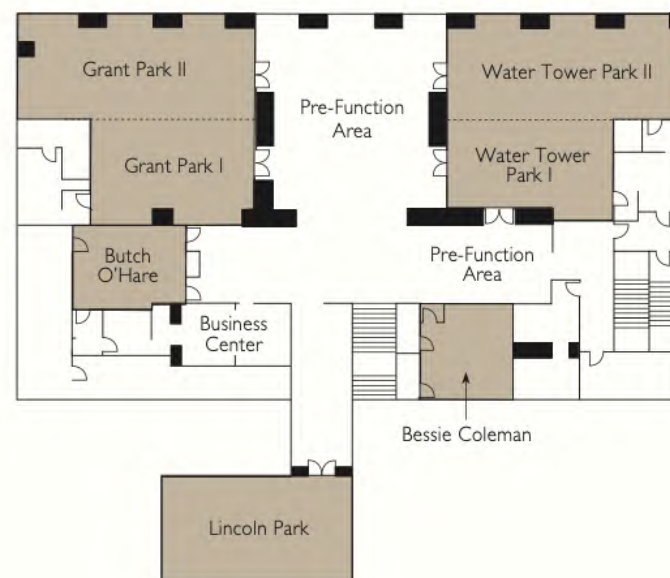
LEVEL FOUR



LEVEL FIVE



LEVEL SIX



CAPACITY CHART

Venue / Location	Area		Capacity					
	Sq M	Sq Ft	Banquet	Cocktail	Theater	Boardroom	Classroom	U-Shape
4th Floor								
Grand Ballroom Pre-Function	92	990	N/A	120	N/A	N/A	N/A	N/A
Grand Ballroom	444	4782	320	550	330	N/A	230	65
The Terrace	279	3000	N/A	320	N/A	N/A	N/A	N/A
Shanghai Terrace Private Dining Room	31	333	30	30	N/A	20	N/A	N/A
5th Floor								
Avenues Pre-Function	80	860	50	60	N/A	24	N/A	N/A
Avenues Ballroom	164	1770	110	175	120	40	50	34
Millennium Park	146	1572	120	150	120	32	78	33
6th Floor								
Water Tower Park	131	1406	100	120	140	28	50	35
Grant Park	137	1472	100	120	140	28	50	35
Lincoln Park	57	611	40	40	50	16	20	15
Butch O'Hare	34	363	N/A	N/A	N/A	12	N/A	N/A
Bessie Coleman	36	386	30	30	28	10	10	9

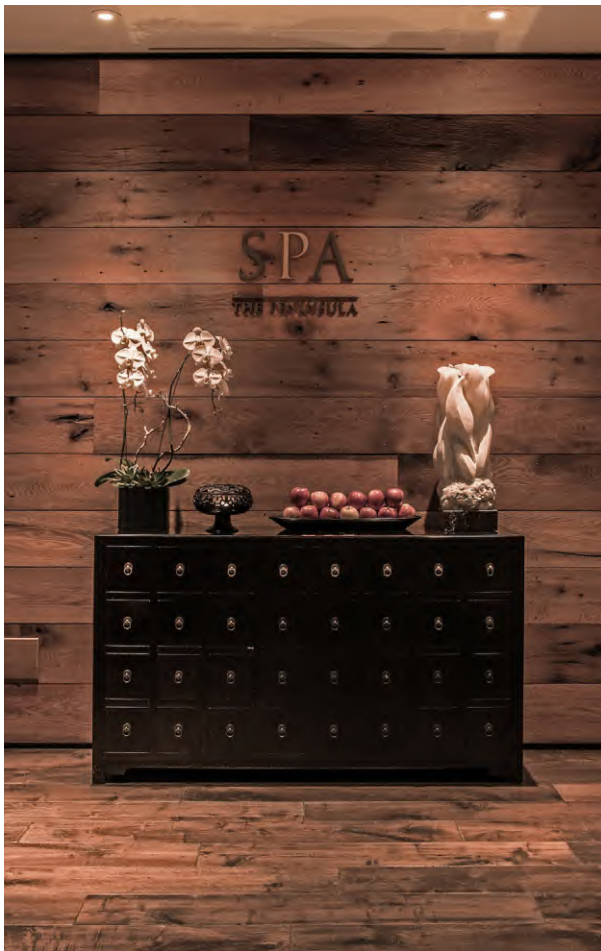


SPA & WELLNESS

The 15,000-square-foot Peninsula Spa is Chicago's most exclusive wellness and fitness destination. Occupying the 19th and 20th floors of the hotel, it offers an array of relaxing and rejuvenating beauty therapies, as well as cutting-edge fitness equipment, movement classes, and a 25-meter indoor pool with floor-to-ceiling windows overlooking the city. The spa facilities also include:

- Steam rooms and relaxation lounges
- A sun terrace for warm-weather lounging
- Poolside dining upon request

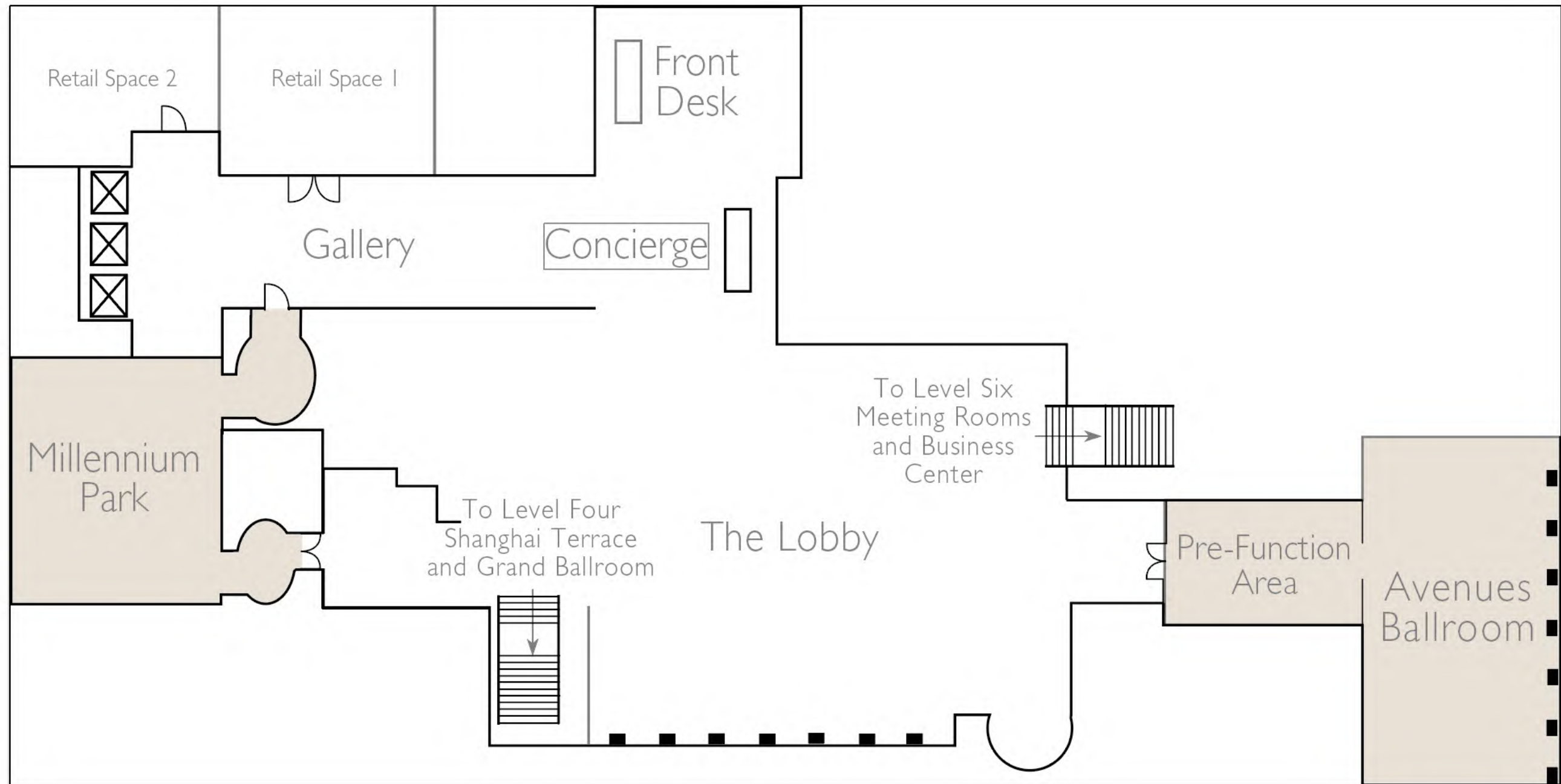
2023	Covers
Spa Members	200
Total Spa Treatments	25,000



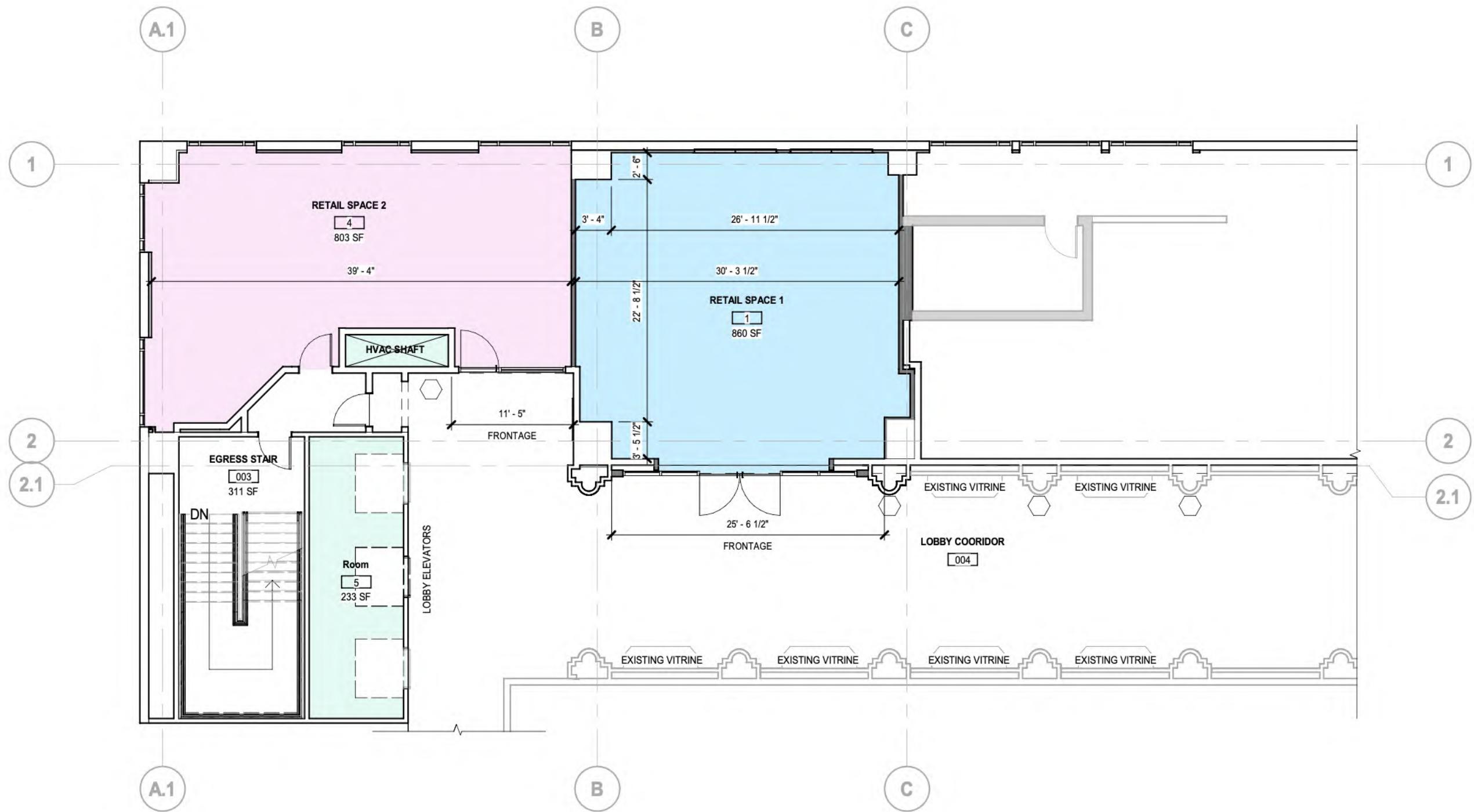


RETAIL SPACE

LEVEL FIVE



FLOOR PLAN



5TH FLOOR

SCALE: 3/32" = 1'-0"

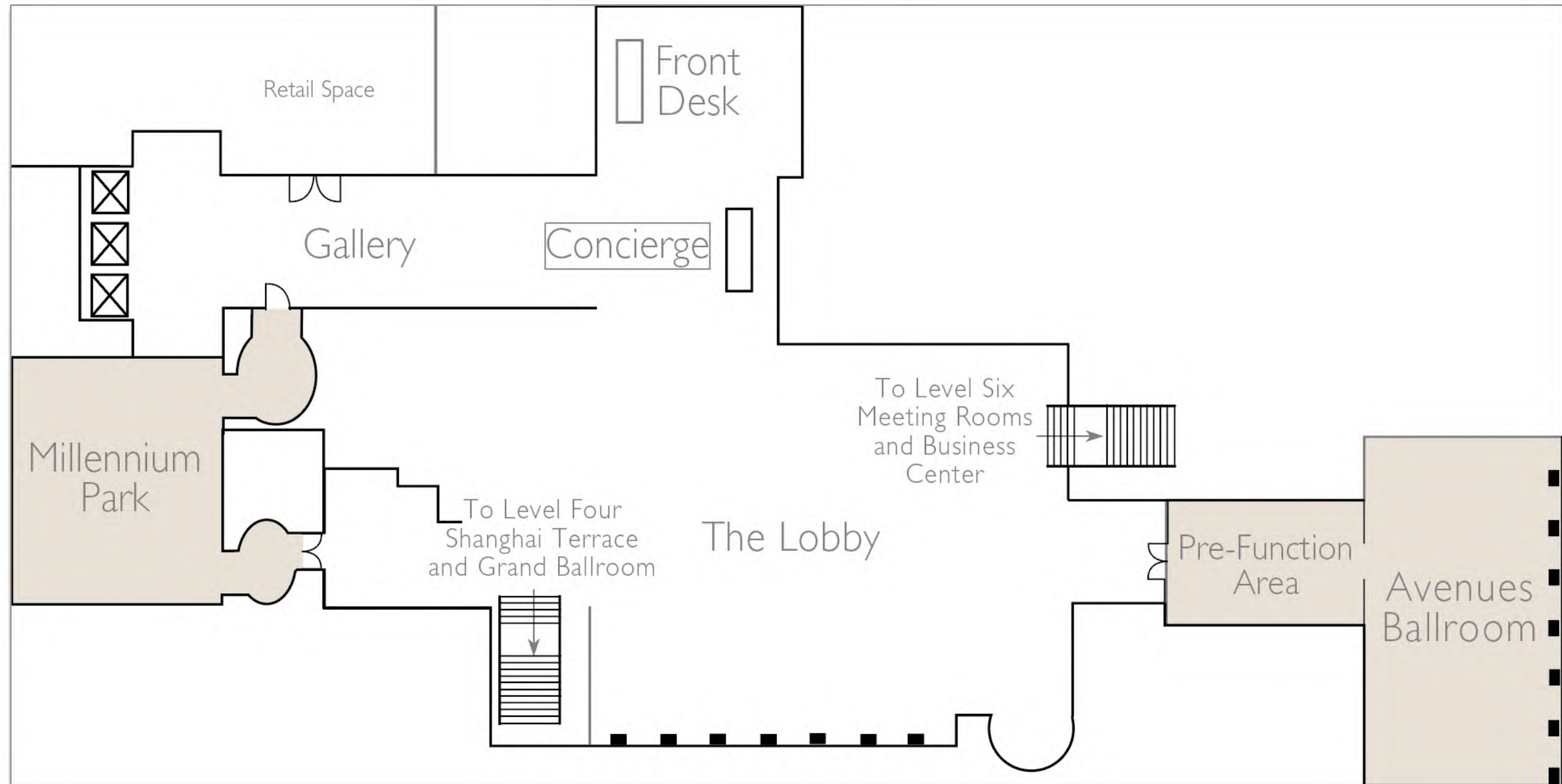


FLOOR PLAN

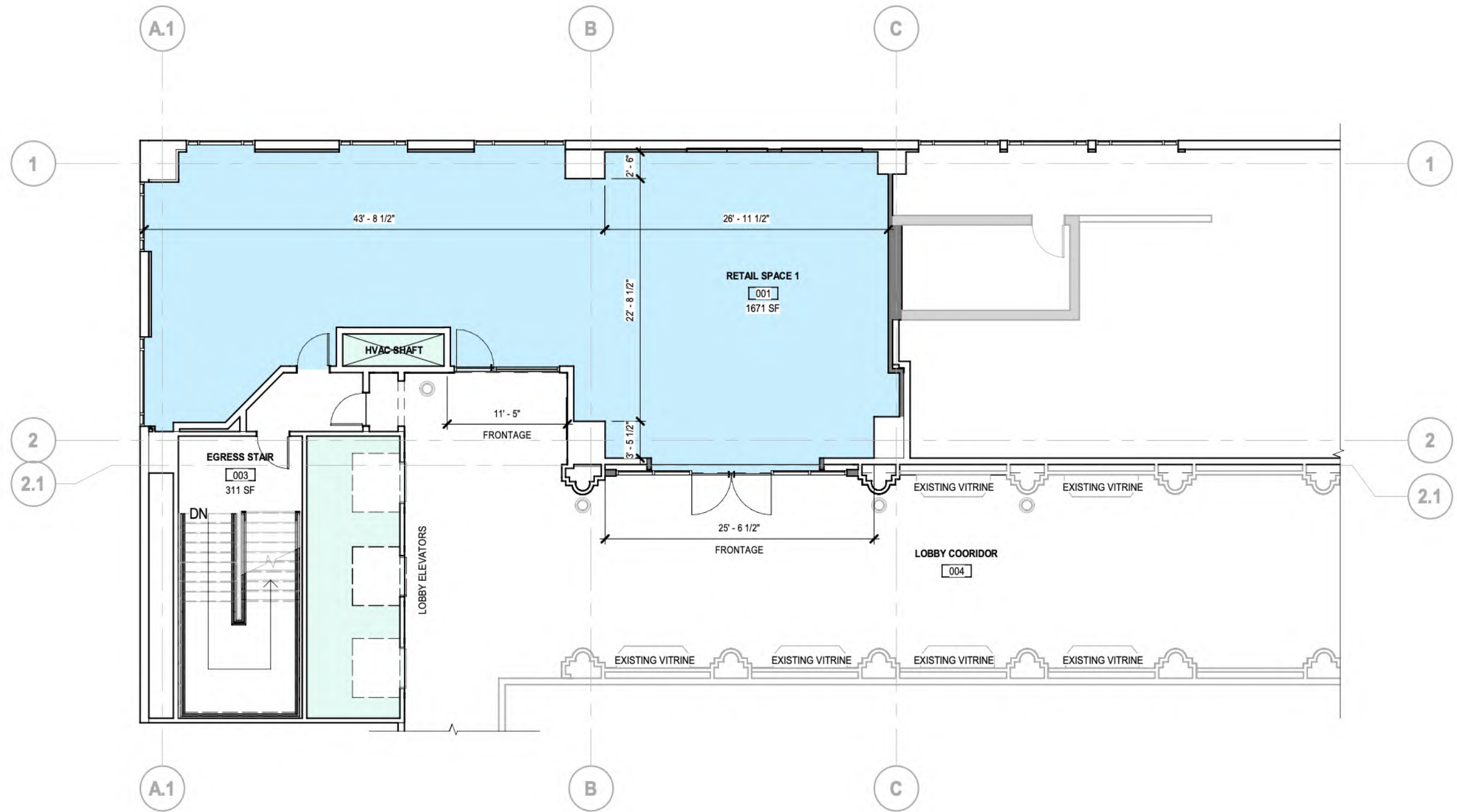


RETAIL SPACE

LEVEL FIVE



FLOOR PLAN



FLOOR PLAN



GENERAL INFORMATION

Introduction	The Peninsula Chicago is the five-star hotel that brought traditional Asian service to a city already renowned for the warmth of its hospitality. The hotel has become an integral part of Chicago life and is considered the top choice for everything from accommodation to celebrations and corporate events. For this, the hotel credits its strong links to both the local community and international heritage. The Peninsula Chicago has proudly received a Forbes Travel Guide Five-Star rating each year since its opening. In 2023, The Peninsula Chicago was named the 'Best City Hotel in the Continental U.S' in Travel + Leisure's Worlds' Best Awards, and '#2 Hotel in the World' in LA LISTE's Top 1,000 World's Best Hotels.
Number of Hotel Rooms	339
Opened	2001
Number of Function Space	8
Number of Food & Beverage Outlet	4
Security	24/7 Manager on duty
	24/7 Hotel security on duty
	24/7 Hotel CCTV monitoring