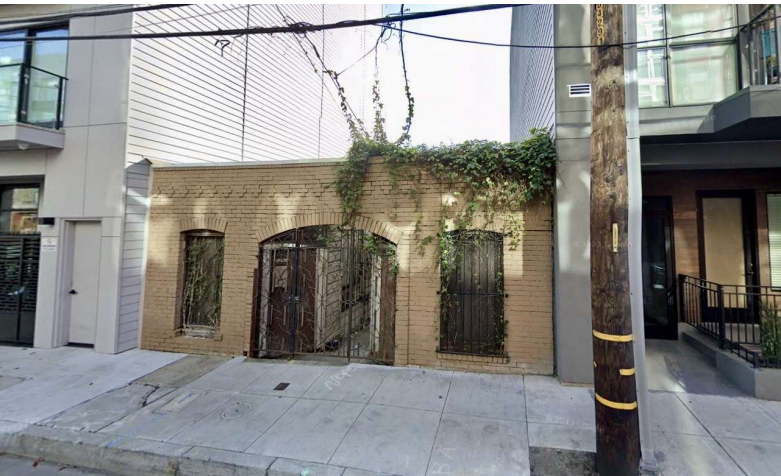
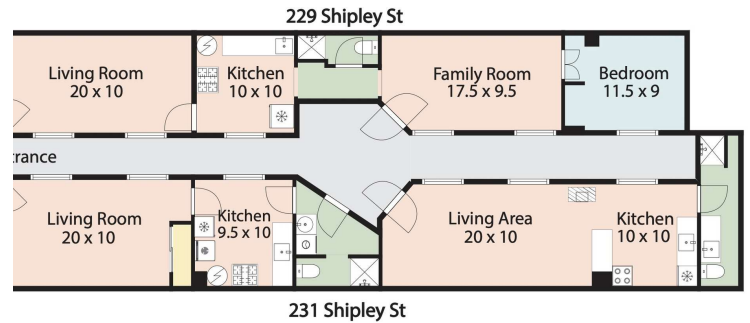


JUST LISTED | VACANT 3 UNIT | \$1,100,000

229-231 SHIPLEY ST., SAN FRANCISCO, CA 94107



229-31 Shipley St, San Francisco, CA 94107



Property Description

Situated in SoMa, this value-add 3-4 unit residential complex features a distinctive layout with charming brick details. Built in 1916, the property will benefit from cosmetic upgrades and care under new ownership. Total square footage is 1,500 SF+/- on a 1,875 SF lot with significant developments recently completed or proposed on neighboring properties.

Property Highlights

- 1,500 SF building with 3+ units
- Zoned MUR for multifamily use
- Ideal for Multifamily Investors or Development

Offering Summary

| | |
|-------------------------|-------------|
| Sale Price: | \$1,100,000 |
| Number of Units: | 3+ |
| Lot Size: | 1,875 SF |
| Building Size: | 1,500 SF |

| Demographics | 0.3 Miles | 0.5 Miles | 1 Mile |
|--------------------------|-----------|-----------|-----------|
| Total Households | 3,570 | 11,916 | 57,188 |
| Total Population | 6,618 | 24,158 | 111,412 |
| Average HH Income | \$166,807 | \$174,204 | \$166,268 |



The Alexander Barker Team
NAINORCAL.COM

Alex Barker
Vice President
abarker@nainorcal.com
707.480.2591
CalDRE #01961924

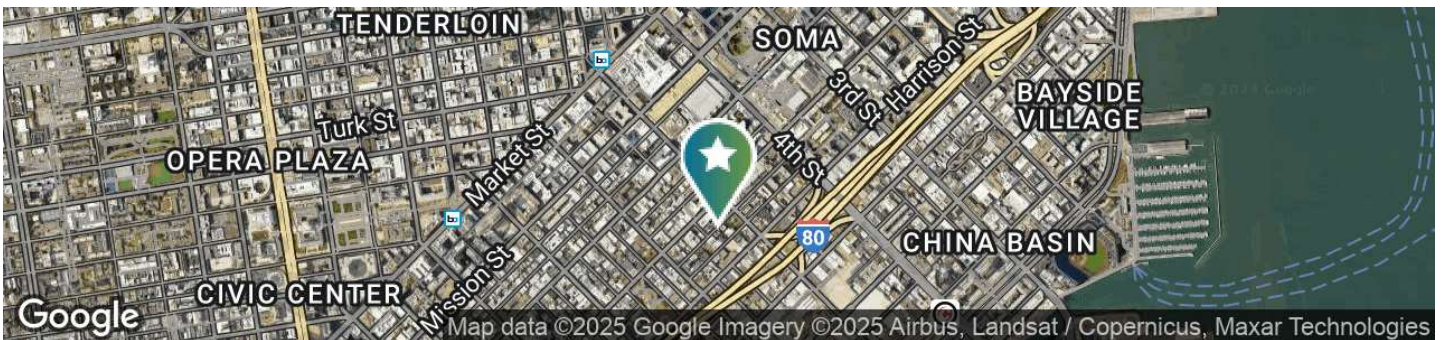
Jose Entrekin
Investment Advisor
jentrekin@nainorcal.com
760.460.0416
CalDRE #02235241

Nick Colletti
Market Analyst
ncolletti@nainorcal.com
925.708.5280

Additional Photos



Location Information



For More Information

Alex Barker
Vice President
abarker@nainorcal.com
707.480.2591
CalDRE #01961924

Jose Entrekin
Investment Advisor
jentrekin@nainorcal.com
760.460.0416
CalDRE #02235241

Nick Colletti
Market Analyst
ncolletti@nainorcal.com
925.708.5280