



540 Lippincott Drive

The Offices At South Crossings - Building F
Marlton, New Jersey 08053

Property Overview

- 2 Private Offices, Conference Room
- Large Open Bullpen Area
- Reception/Waiting Area
- End Condo Unit with Windows (3 Sides)
- \$14 Per SF NNN
- Available Immediately
- Showings By Appointment Only

Offering Summary

Lease Rate:	\$14.00 SF/yr (NNN)
Available SF:	1,600 SF
Lot Size:	0.1 Acres

Demographics	0.3 Miles	0.5 Miles	1 Mile
Total Households	163	794	4,156
Total Population	391	1,968	10,370
Average HH Income	\$144,023	\$150,353	\$158,702

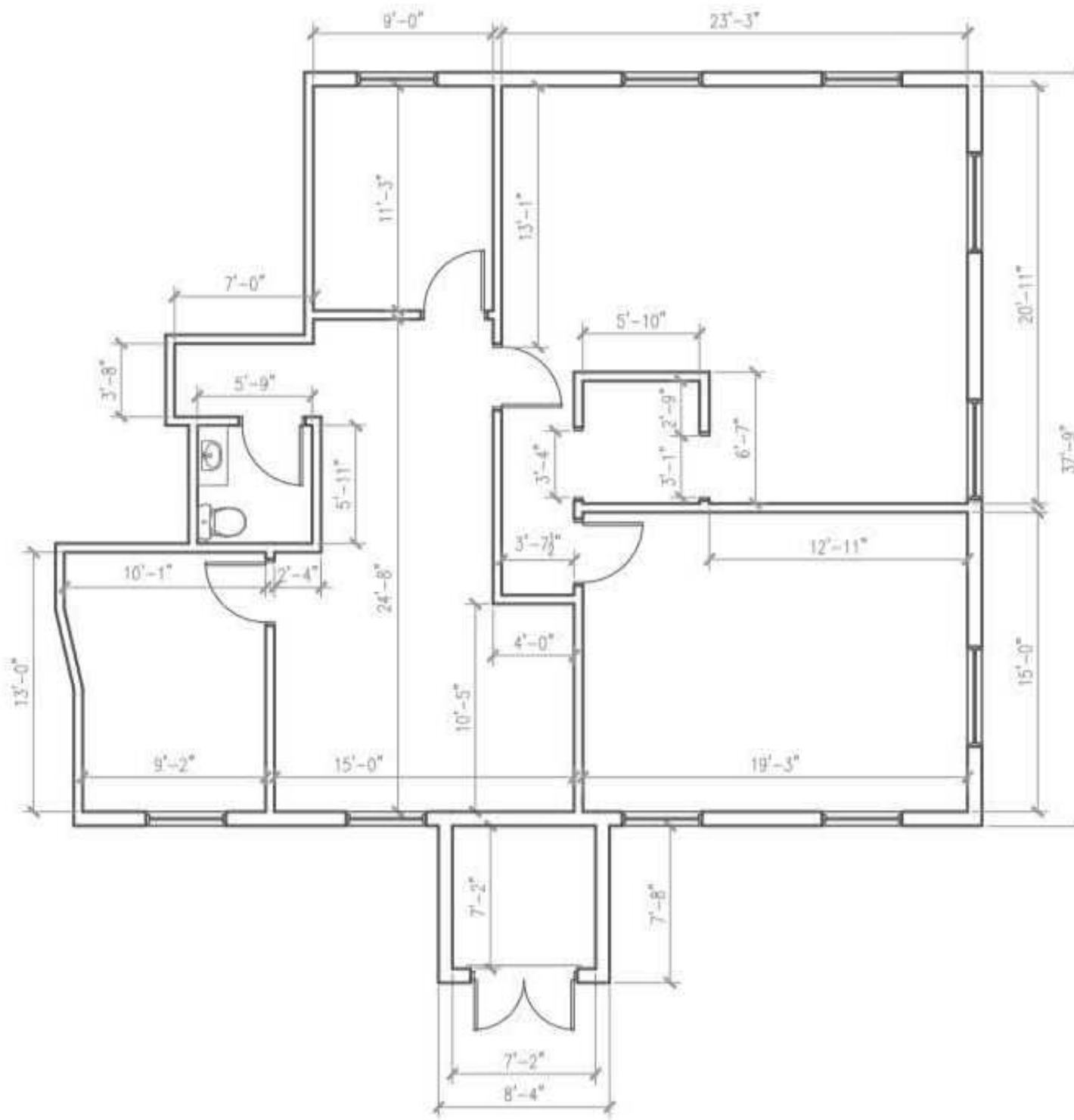
For More Information

Joe Riggs
O: 609 352 1162
joe.riggs@naimertz.com

Will Frank
O: 856 724 4248
will.frank@naimertz.com

For Lease

1,600+/- SF | \$14.00 SF/yr
Professional Office





For Lease

1,600+/- SF | \$14.00 SF/yr
Professional Office



BROCHURE | 540 Lippincott Drive Building F Marlton, NJ 08053

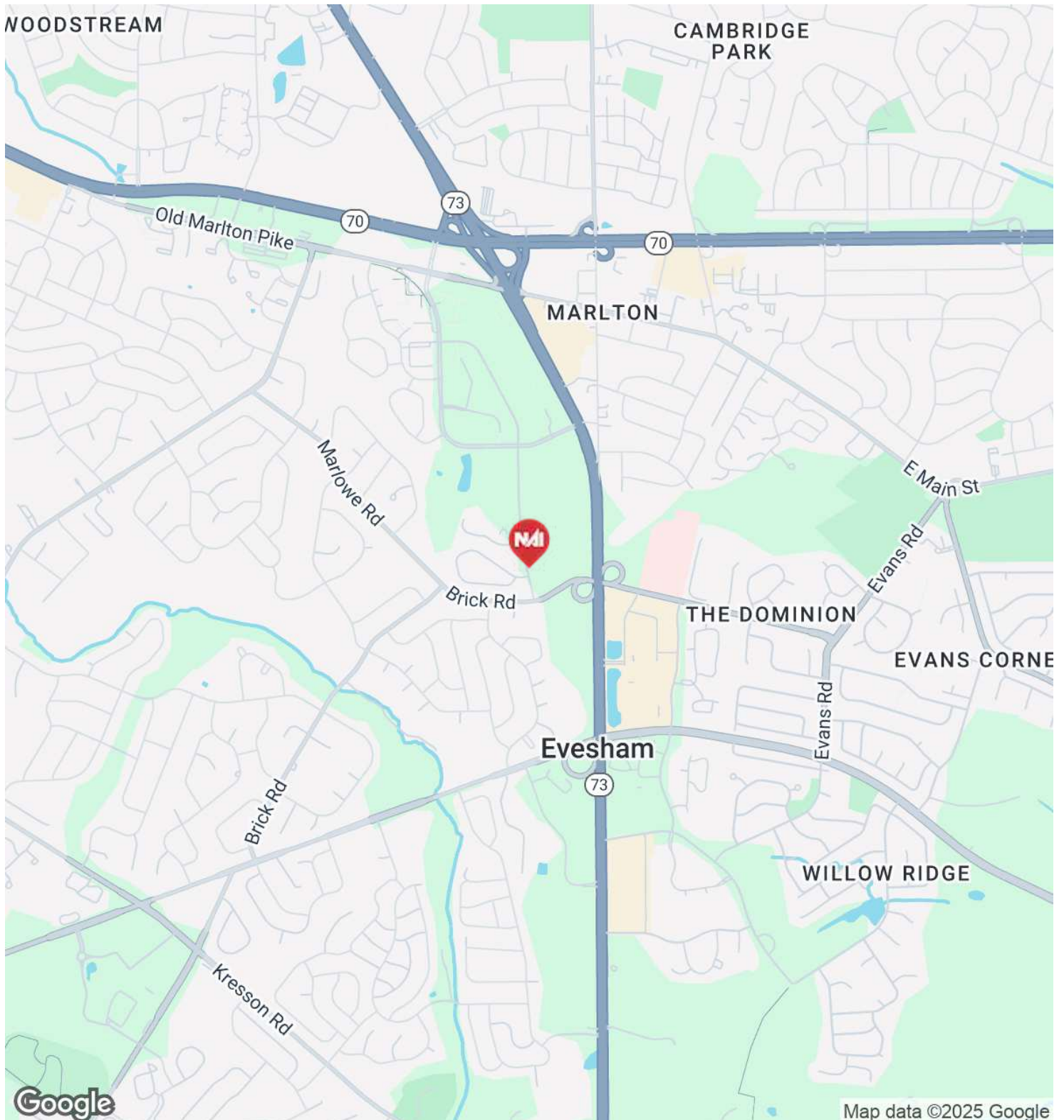
NAI MERTZ DISCLAIMER: NO WARRANTY OR REPRESENTATION, EXPRESS OR IMPLIED, IS MADE AS TO THE ACCURACY OF THE INFORMATION CONTAINED HEREIN, AND THE SAME IS SUBMITTED SUBJECT TO ERRORS, OMISSIONS, CHANGE OF PRICE, RENTAL OR OTHER CONDITIONS, PRIOR SALE, LEASE OR FINANCING, OR WITHDRAWAL WITHOUT NOTICE, AND OF ANY SPECIAL LISTING CONDITIONS IMPOSED BY OUR PRINCIPALS NO WARRANTIES OR REPRESENTATIONS ARE MADE AS TO THE CONDITION OF THE PROPERTY OR ANY HAZARDS CONTAINED THEREIN ARE ANY TO BE IMPLIED. OUTLINES ARE APPROXIMATE AND SHOWN ONLY TO IDENTIFY THE PARCEL IN CONSIDERATION.



For Lease

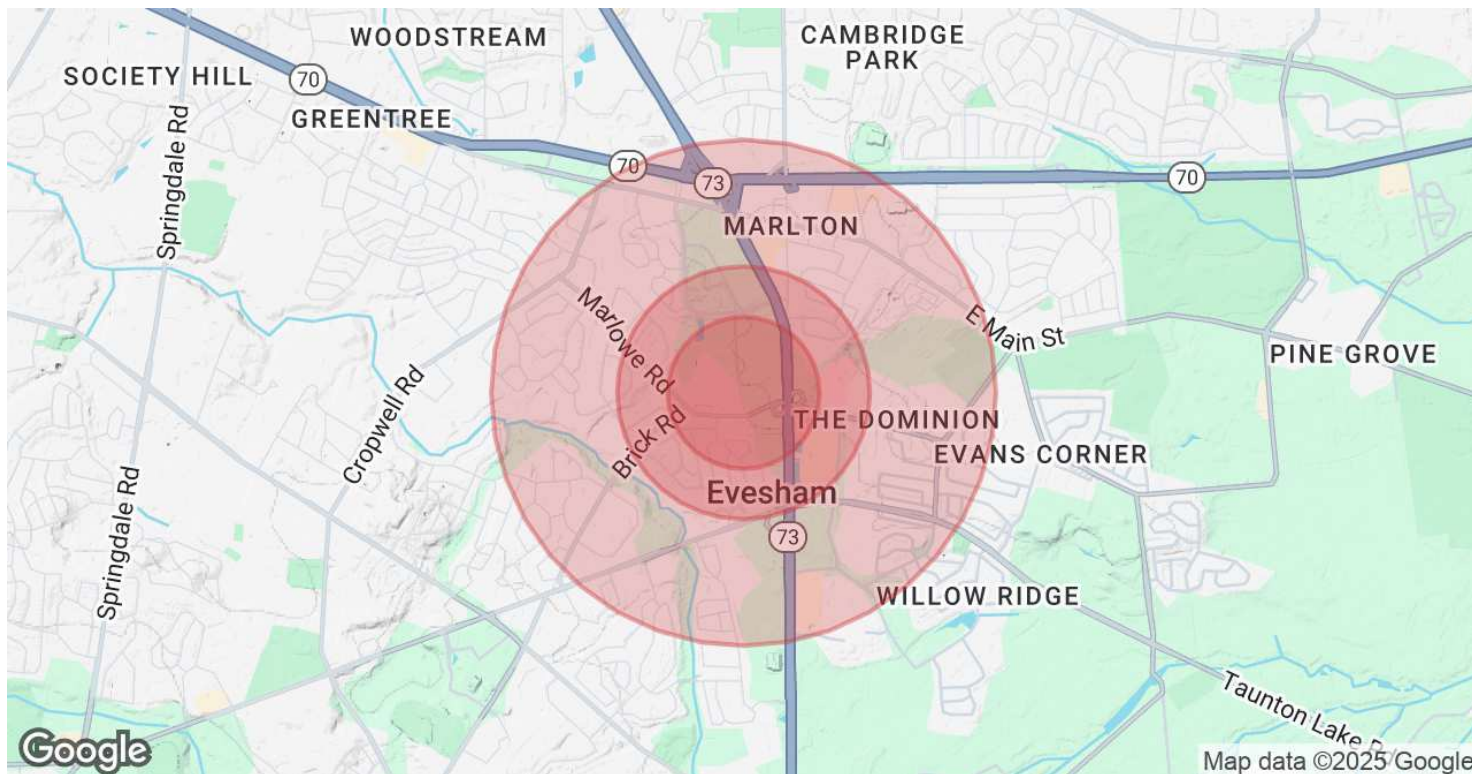
1,600+/- SF | \$14.00 SF/yr

Professional Office



BROCHURE | 540 Lippincott Drive Building F Marlton, NJ 08053

NAI MERTZ DISCLAIMER: NO WARRANTY OR REPRESENTATION, EXPRESS OR IMPLIED, IS MADE AS TO THE ACCURACY OF THE INFORMATION CONTAINED HEREIN, AND THE SAME IS SUBMITTED SUBJECT TO ERRORS, OMISSIONS, CHANGE OF PRICE, RENTAL OR OTHER CONDITIONS, PRIOR SALE, LEASE OR FINANCING, OR WITHDRAWAL WITHOUT NOTICE, AND OF ANY SPECIAL LISTING CONDITIONS IMPOSED BY OUR PRINCIPALS NO WARRANTIES OR REPRESENTATIONS ARE MADE AS TO THE CONDITION OF THE PROPERTY OR ANY HAZARDS CONTAINED THEREIN ARE ANY TO BE IMPLIED. OUTLINES ARE APPROXIMATE AND SHOWN ONLY TO IDENTIFY THE PARCEL IN CONSIDERATION.



Population	0.3 Miles	0.5 Miles	1 Mile
Total Population	391	1,968	10,370
Average Age	44	46	46
Average Age (Male)	42	44	44
Average Age (Female)	45	47	47

Households & Income	0.3 Miles	0.5 Miles	1 Mile
Total Households	163	794	4,156
# of Persons per HH	2.4	2.5	2.5
Average HH Income	\$144,023	\$150,353	\$158,702
Average House Value	\$360,670	\$402,237	\$406,352

Demographics data derived from AlphaMap