

East Village Office Suites

Access to Parking & Close to I-235

East Locust Street
Des Moines, Iowa
www.cbre.com/desmoines

Available Suite Details Inside



601 E. Locust Street

2nd Floor



Available Space

Suite	Available SF	Space Type	Lease Rate
Suite 201 FORMER SPA SPACE	4,672 SF	Office	\$22/SF Modified Gross
Suite 203	2,844 SF	Office	\$22/SF Modified Gross

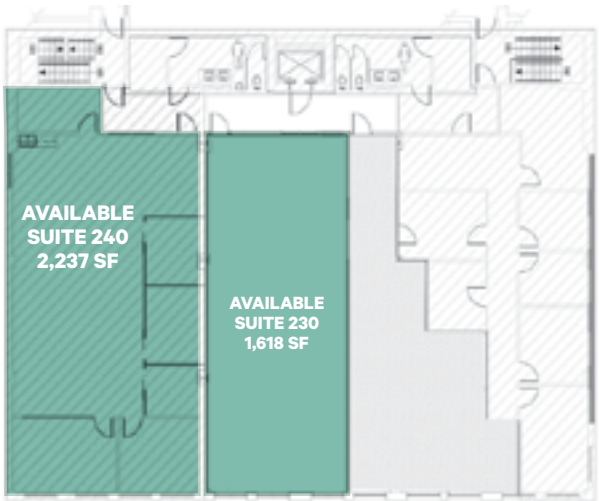


[Scan Below or Click Here
for Property Video](#)



521 E. Locust Street

2nd Floor



Available Space

Suite	Available SF	Space Type	Lease Rate
Suite 230	1,618 SF	Office	\$24.50/SF Modified Gross
Suite 240	2,237 SF	Office	\$24.50/SF Modified Gross

*Suites 230 and 240 Can Be Combined



Turn Key Suite 240

[Click Here
for Virtual Suite Tour](#)



Property Locations





EATERIES

- 1 The Republic on Grand
- 2 Scenic Route Bakery
- 3 Open Sesame
- 4 Zombie Burger
- 5 Alba
- 6 HoQ
- 7 Lucca
- 8 Jimmy John's
- 9 Miyabi 9, Quinton's, Olympic Flame
- 10 Ceviche Bar, Blu Thai
- 11 Cafe Baratta's
- 12 Clyde's Fine Diner

BREWERIES & COCKTAILS

- 1 AJ's on East Court
- 2 Iowa Taproom
- 3 Beechwood Lounge
- 4 The Continental
- 5 Wooly's

HOTELS

- 1 AC Hotel
- 2 Embassy Suites
- 3 Staybridge Suites

NEARBY PARKING

- 1 308 E 6th Street Garage
- 2 Capitol Complex Parking

NEARBY DART STOPS

- 1 E 6th (Mid-Block)
- 2 Grand Ave at E 4th
- 3 Grand Ave at E 6th

Contact Us

Riley Hogan

Senior Vice President

+1 515 778 0739

riley.hogan@cbre.com

Licensed in the State of Iowa

Blake Bogenrief, CCIM

Vice President

+1 515 444 8067

blake.bogenrief@cbre.com

Licensed in the State of Iowa

© 2025 CBRE, Inc. All rights reserved. This information has been obtained from sources believed reliable, but has not been verified for accuracy or completeness. You should conduct a careful, independent investigation of the property and verify all information. Any reliance on this information is solely at your own risk. CBRE and the CBRE logo are service marks of CBRE, Inc. All other marks displayed on this document are the property of their respective owners, and the use of such logos does not imply any affiliation with or endorsement of CBRE. Photos herein are the property of their respective owners. Use of these images without the express written consent of the owner is prohibited.