




For lease

1131 South Orange Avenue
2,567 +/- SF Available

 **JLL** SEE A BRIGHTER WAY

1131 South Orange Avenue / Orlando

1131 South Orange Avenue



Freestanding Medical Office Building
with **2,567+/- SF** available



Ideally located directly across
from South Orange Avenue from
Orlando Health's Main Campus in
Downtown Orlando



Parking ratio **exceeding 4/1,000 s.f.**
which includes rare, covered parking



Waterfront property on **Lake Copeland**



\$29.00/ s.f. NNN

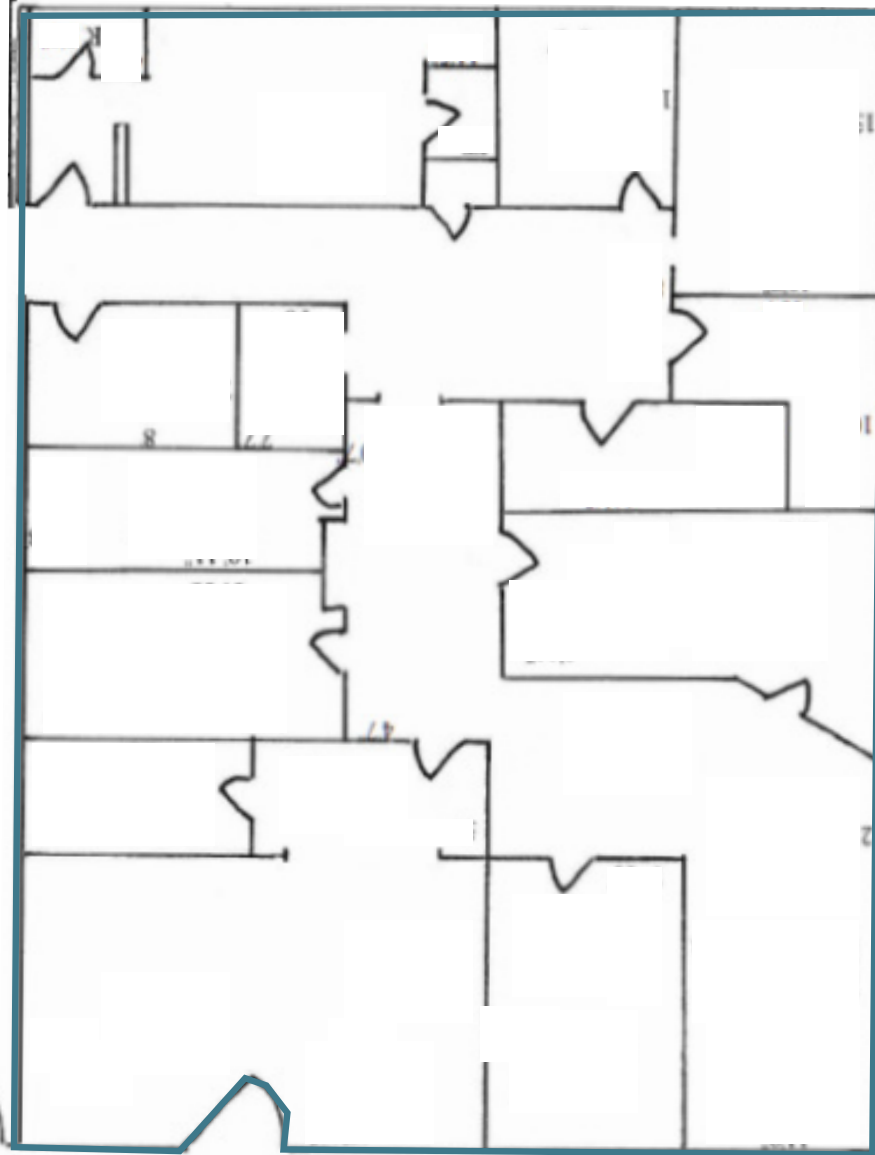


28,500

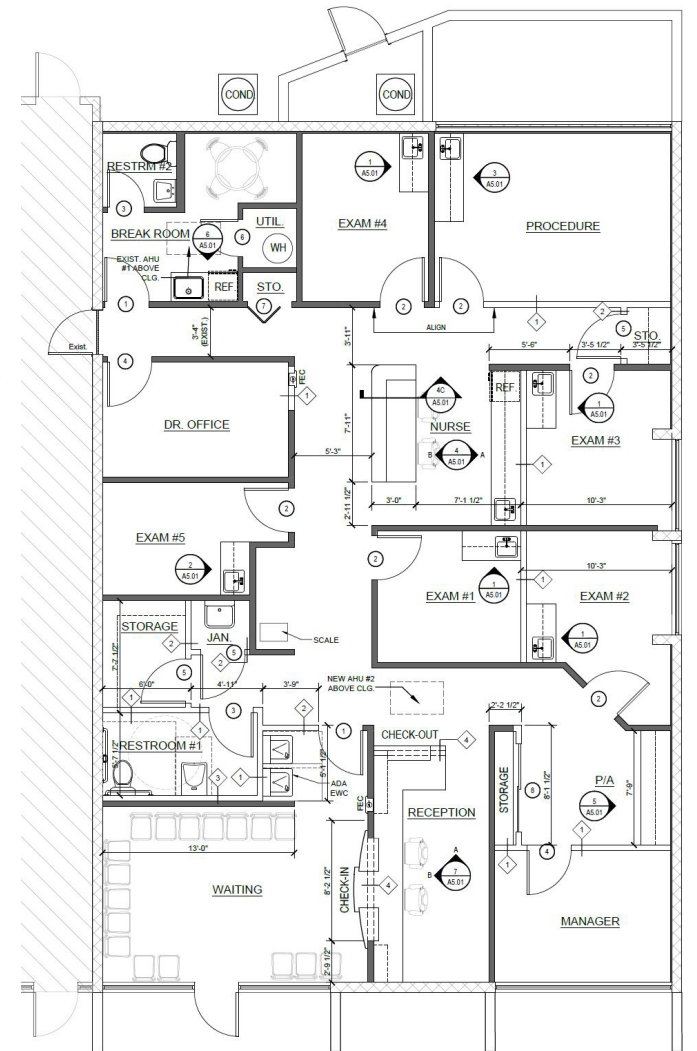
Annual average
daily traffic count

	1 mile	3 miles	5 miles
Estimated population	15,300	116,844	315,365
Estimated households	8,220	53,234	131,242

Floorplans



AVAILABLE SPACE:
2,567 ± s.f.



Ideal Medical Spec Opportunity

1131 South Orange Avenue / Orlando

1131 South Orange Avenue



Jamie Barati
Senior Vice President
+1 407 930 1803
jamie.barati@jll.com

John Worrell
Senior Vice President
+1 407 930 1809
john.worrell@jll.com