

PROPERTY FOR LEASE

# 13220 Cloverdale St

13220 Cloverdale St Oak Park, MI 48237



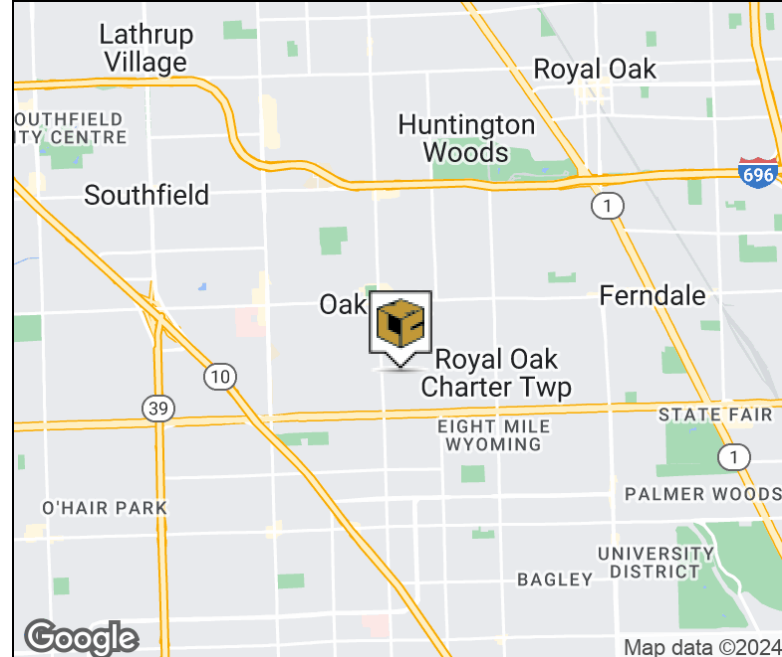
**L. MASON CAPITANI**  
CORFAC INTERNATIONAL

## PROPERTY SUMMARY



### Property Highlights

- 3 Truckwells
- 100% Fire Supressed
- Central Location 696/I-75/M-10
- Very Clean Warehouse
- Great Distribution Building



### FOR MORE INFORMATION:

**Garry Rogers**

Senior Vice President  
248.637.3527  
grogers@LMCap.com

**Michael Laurencelle**

Sales Associate  
248.637.3516  
mlaurencelle@LMCap.com



CONNECT WITH US

**248.637.9700 | [www.LMCap.com](http://www.LMCap.com)**

Information contained herein was obtained from sources deemed to be reliable but is not guaranteed. Subjects to prior sales, changes of price or withdrawal.



PROPERTY FOR LEASE

**13220 Cloverdale St**

**13220 Cloverdale St Oak Park, MI 48237**



**L. MASON CAPITANI**  
CORFAC INTERNATIONAL

**AERIAL**



**FOR MORE INFORMATION:**

**Garry Rogers**

Senior Vice President

248.637.3527

grogers@LMCap.com

**Michael Laurencelle**

Sales Associate

248.637.3516

mLaurencelle@LMCap.com



CONNECT WITH US

**248.637.9700 | [www.LMCap.com](http://www.LMCap.com)**

Information contained herein was obtained from sources deemed to be reliable but is not guaranteed. Subjects to prior sales, changes of price or withdrawal.

PROPERTY FOR LEASE

# 13220 Cloverdale St

13220 Cloverdale St Oak Park, MI 48237



**L. MASON CAPITANI**  
CORFAC INTERNATIONAL

## INDUSTRIAL PROPERTY DETAILS

Lease Rate	<b>\$6.95 SF/YR NNN</b>
Taxes	<b>\$0.65/SF/YR</b>

### Building Information

Building Size	42,494 SF
Available SF	28,403 SF
Office Space	3,000 SF
Factory Space	25,403 SF
Year Built	1973
Year Last Renovated	2025
Tenancy	Call Broker
Number of Truckwells	3
Number of Cranes	0
Grade Doors	1 Possible
Bay Size	See Floorplan
Min/Max Clearance	18.5'
Power Description	240V/3 Phase
Amps	1200
Rail Access	No
Parking Type	Surface
Number of Spaces	50
Heating	Forced Air/Radiant
A/C	Office Only
Restrooms	3
Lighting	LED
Expandable	No
Storage	Yes
Sprinklered	Yes

### Location Information

Street Address	13220 Cloverdale St
City, State, Zip	Oak Park, MI 48237
County	Oakland
Side of Street	North
Nearest Highway	I-696 & M-10
Intersection	9 Mile/Coolidge

### Property Information

Property Type	Industrial
Zoning	LI
Property Subtype	Manufacturing
Lot Size	2.83 Acres
APN #	25-323-010-16
Site Description	Central Location   3 Truckwells   Great Distribution Building   Racking is Available

### FOR MORE INFORMATION:

#### Garry Rogers

Senior Vice President  
248.637.3527  
grogers@LMCap.com

#### Michael Laurencelle

Sales Associate  
248.637.3516  
mlaurencelle@LMCap.com



CONNECT WITH US

**248.637.9700 | www.LMCap.com**

Information contained herein was obtained from sources deemed to be reliable but is not guaranteed. Subjects to prior sales, changes of price or withdrawal.



PROPERTY FOR LEASE

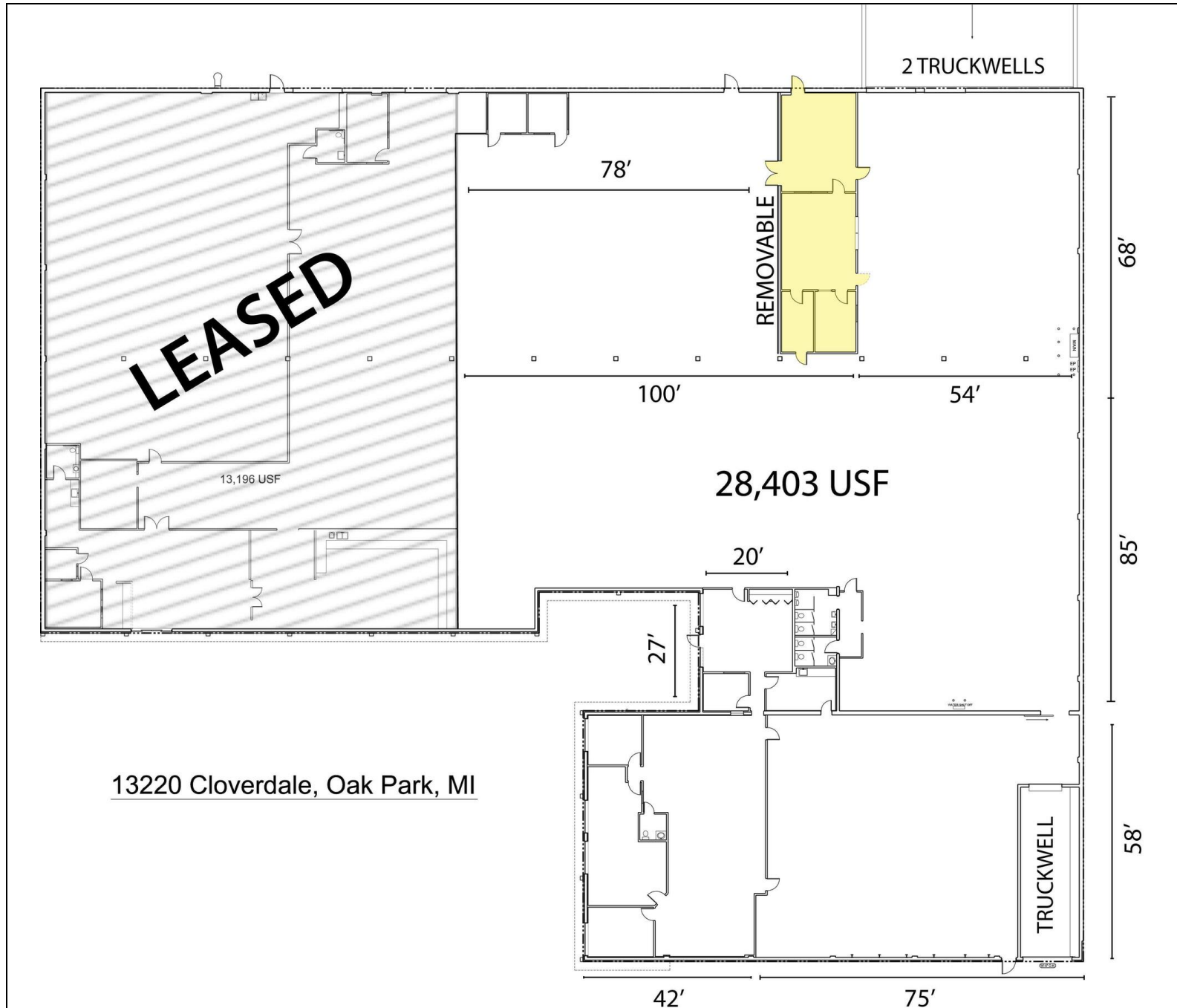
**13220 Cloverdale St**

**13220 Cloverdale St Oak Park, MI 48237**



**L. MASON CAPITANI**  
CORFAC INTERNATIONAL

## FLOOR PLANS



### FOR MORE INFORMATION:

**Garry Rogers**

Senior Vice President

248.637.3527

grogers@LMCap.com

**Michael Laurencelle**

Sales Associate

248.637.3516

mLaurencelle@LMCap.com



CONNECT WITH US

**248.637.9700 | [www.LMCap.com](http://www.LMCap.com)**

Information contained herein was obtained from sources deemed to be reliable but is not guaranteed. Subjects to prior sales, changes of price or withdrawal.

PROPERTY FOR LEASE

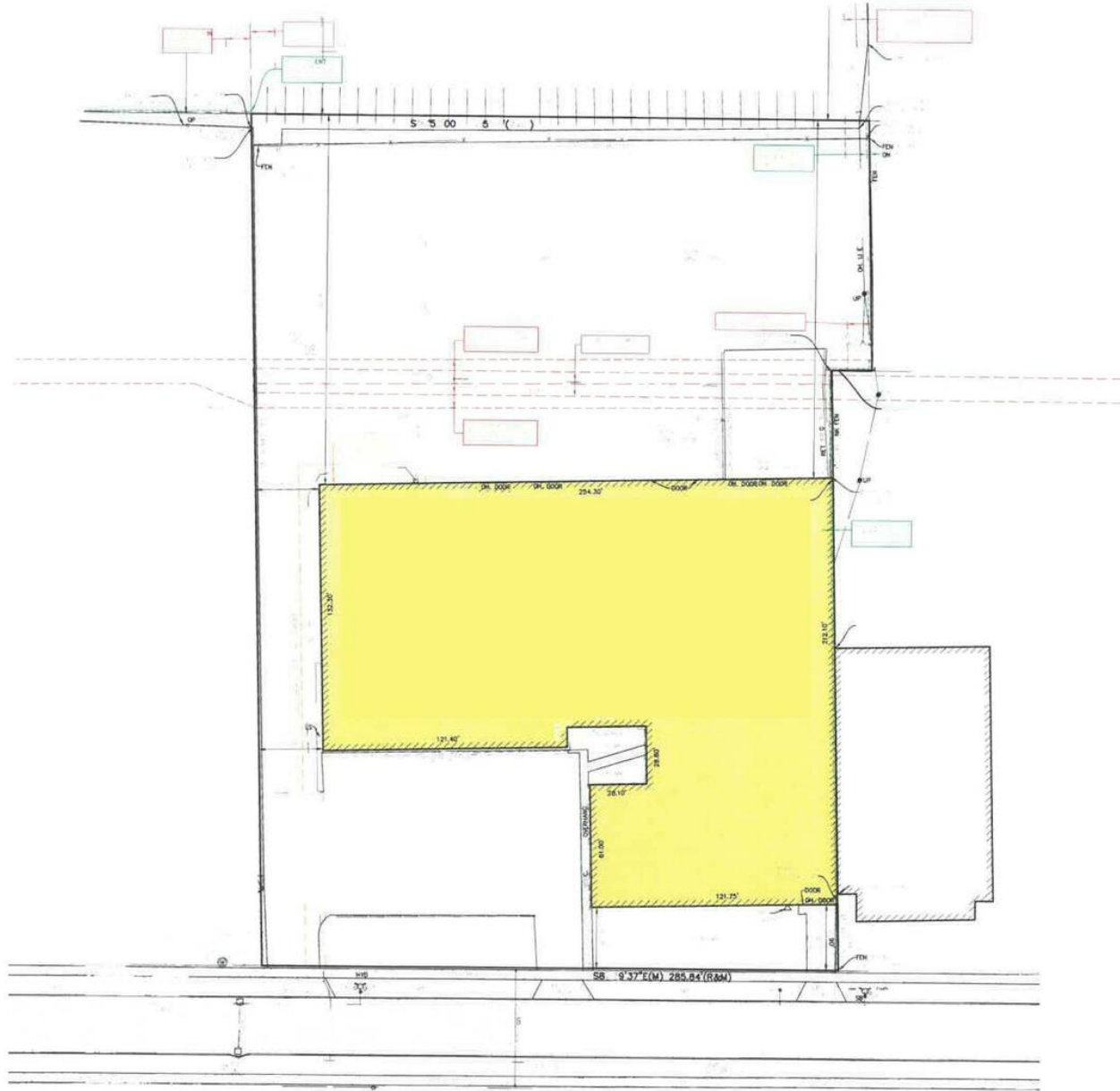
**13220 Cloverdale St**

**13220 Cloverdale St Oak Park, MI 48237**



**L. MASON CAPITANI**  
CORFAC INTERNATIONAL

**SURVEY**



**FOR MORE INFORMATION:**

**Garry Rogers**

Senior Vice President

248.637.3527

grogers@LMCap.com

**Michael Laurencelle**

Sales Associate

248.637.3516

mlaurencelle@LMCap.com



CONNECT WITH US

**248.637.9700 | [www.LMCap.com](http://www.LMCap.com)**

Information contained herein was obtained from sources deemed to be reliable but is not guaranteed. Subjects to prior sales, changes of price or withdrawal.