



AVAILABLE FOR SALE

**140 TAMIAMI TRAIL
Punta Gorda, FL 33950**

ASKING \$1,100,000

Located on a signalized intersection in the heart of Downtown Punta Gorda, this 0.26-acre property offers exceptional visibility with over 30,500 vehicles per day (AADT) on Tamiami Trail. The property features a 1,170 SF freestanding building, originally constructed in 1936, with classic architecture and a functional layout suitable for retail, office, or professional services. Zoned City Center (CC), it provides flexible use options to support a growing business. Included is an additional parcel at 108 E Marion Ave, offering a parking lot with 14+ spaces for employees or customers. With its prime downtown location, high-traffic exposure, and convenient parking, 140 Tamiami Trail is an ideal location for an owner-user seeking a vibrant and established business corridor in Punta Gorda.

PROPERTY HIGHLIGHTS

- 1,590 SF building
- Corner lot with frontage & access US-41 and E Marion Ave
- Built in 1936
- Zoned CC
- Prime Downtown Punta Gorda location
- 42,000 AADT
- 14+ parking spaces

Site Size	0.25 Acres
Building Size	1,590 SF
Year Built	1936
Taxes	4,206.83
Zoning	CC
Market	Downtown Punta Gorda

CONTACT

Hunter McCarthy
Commercial Advisor
Tel: 941.421.9569
hunter.mccarthy@remax.net



Margeaux McCarthy
Commercial Advisor
Tel: 401.688.0822
m.mccarthy@remax.net



REMAX HARBOR REALTY

AVAILABLE FOR SALE
140 TAMIAMI TRAIL
Punta Gorda, FL 33950

REMAX
COMMERCIAL
REMAX HARBOR REALTY



AVAILABLE FOR SALE
140 TAMIAMI TRAIL
Punta Gorda, FL 33950

REMAX
COMMERCIAL

REMAX HARBOR REALTY



AVAILABLE FOR SALE

140 TAMIAMI TRAIL
Punta Gorda, FL 33950

REMAX
COMMERCIAL

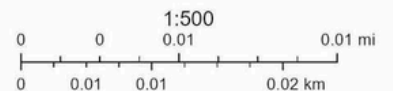
REMAX HARBOR REALTY

Map Layout



September 11, 2025

- | | | | |
|------------------|---------|----------------|--------------------|
| Override 1 | Freeway | Major Arterial | Lots |
| Road Centerlines | Highway | Minor Arterial | Property Ownership |
| Collector | Local | Block Number | |



Charlotte County, Charlotte County GIS

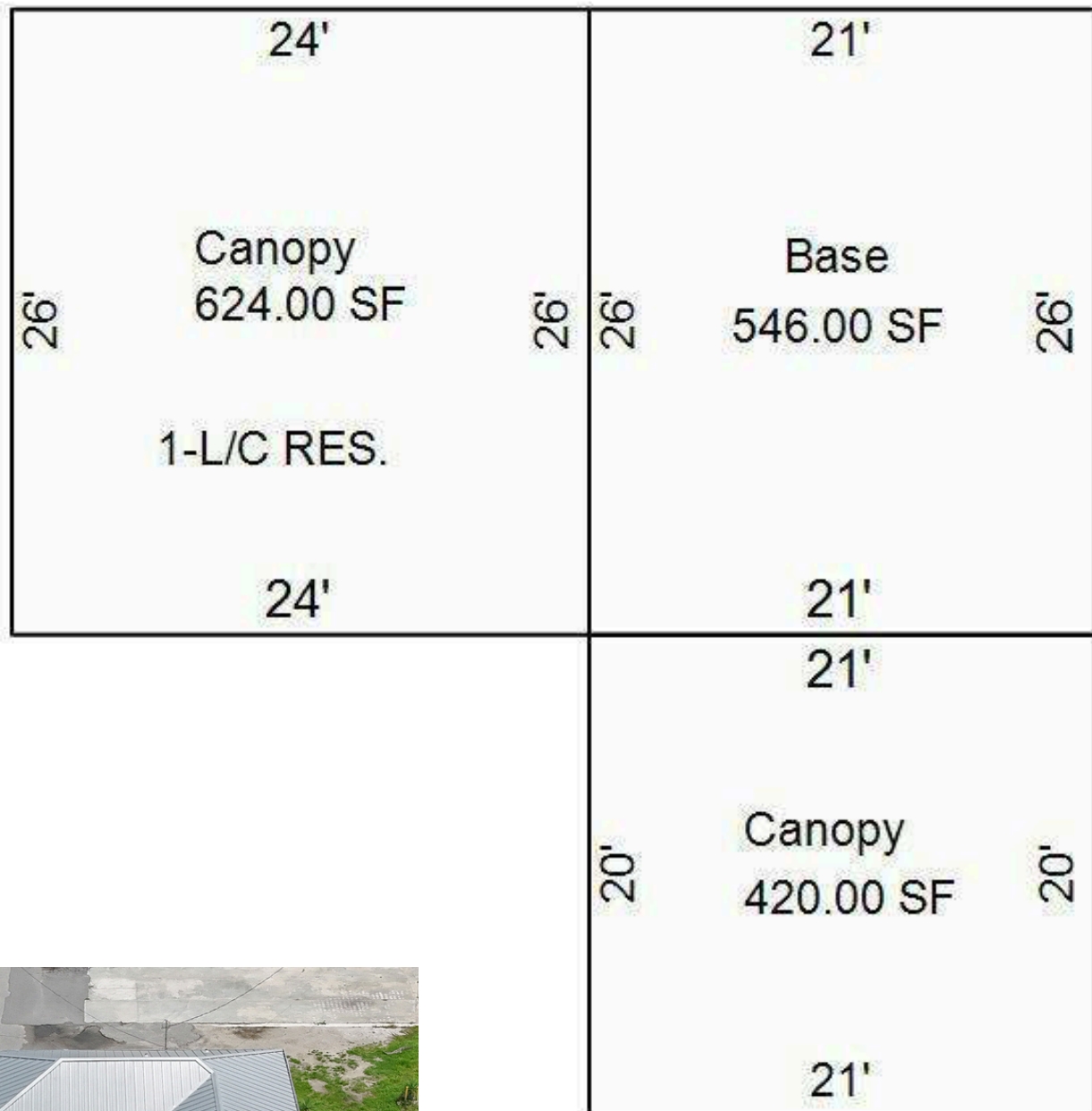
Charlotte County GIS

AVAILABLE FOR SALE

**140 TAMIAMI TRAIL
Punta Gorda, FL 33950**

REMAX
COMMERCIAL

REMAX HARBOR REALTY

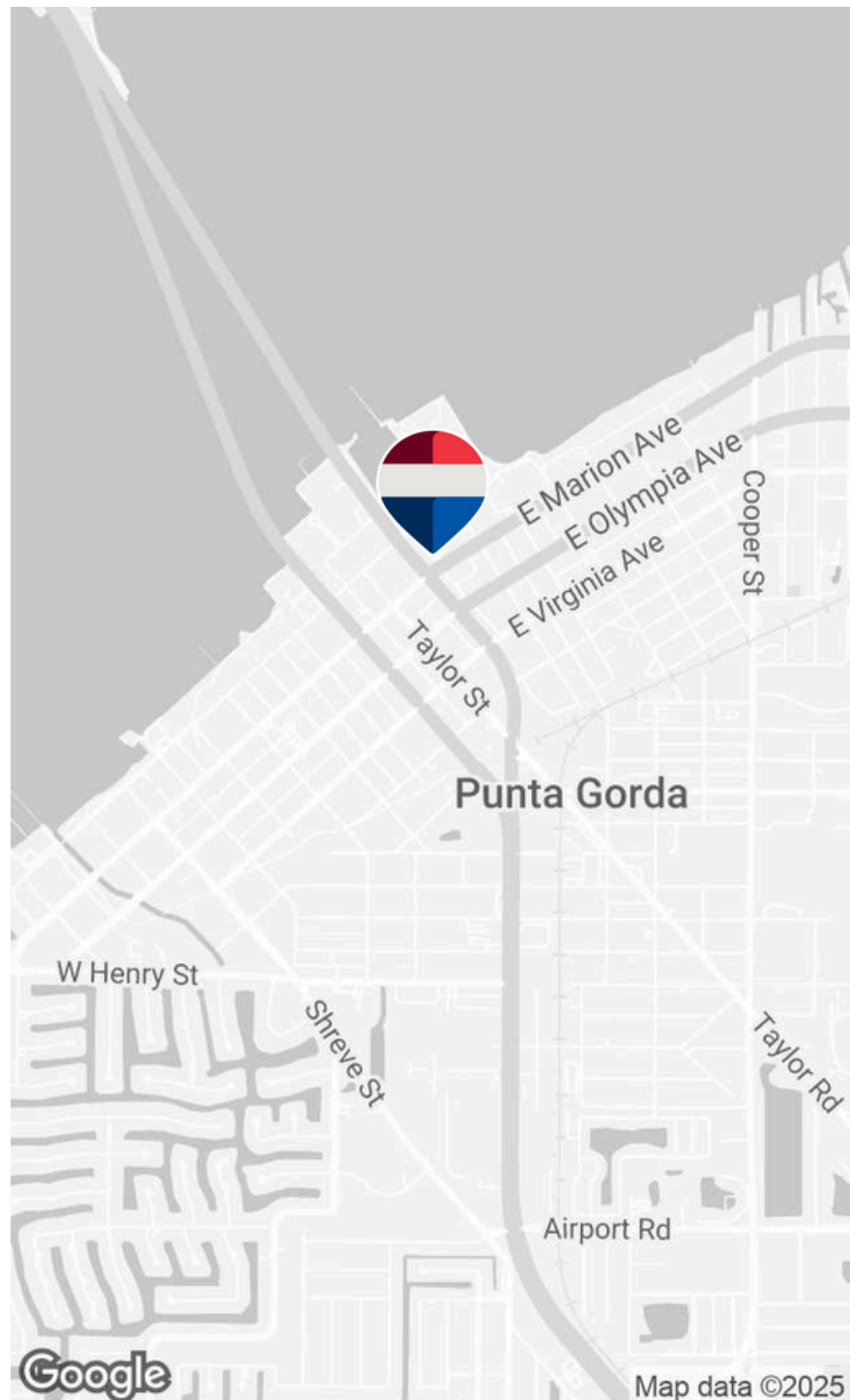
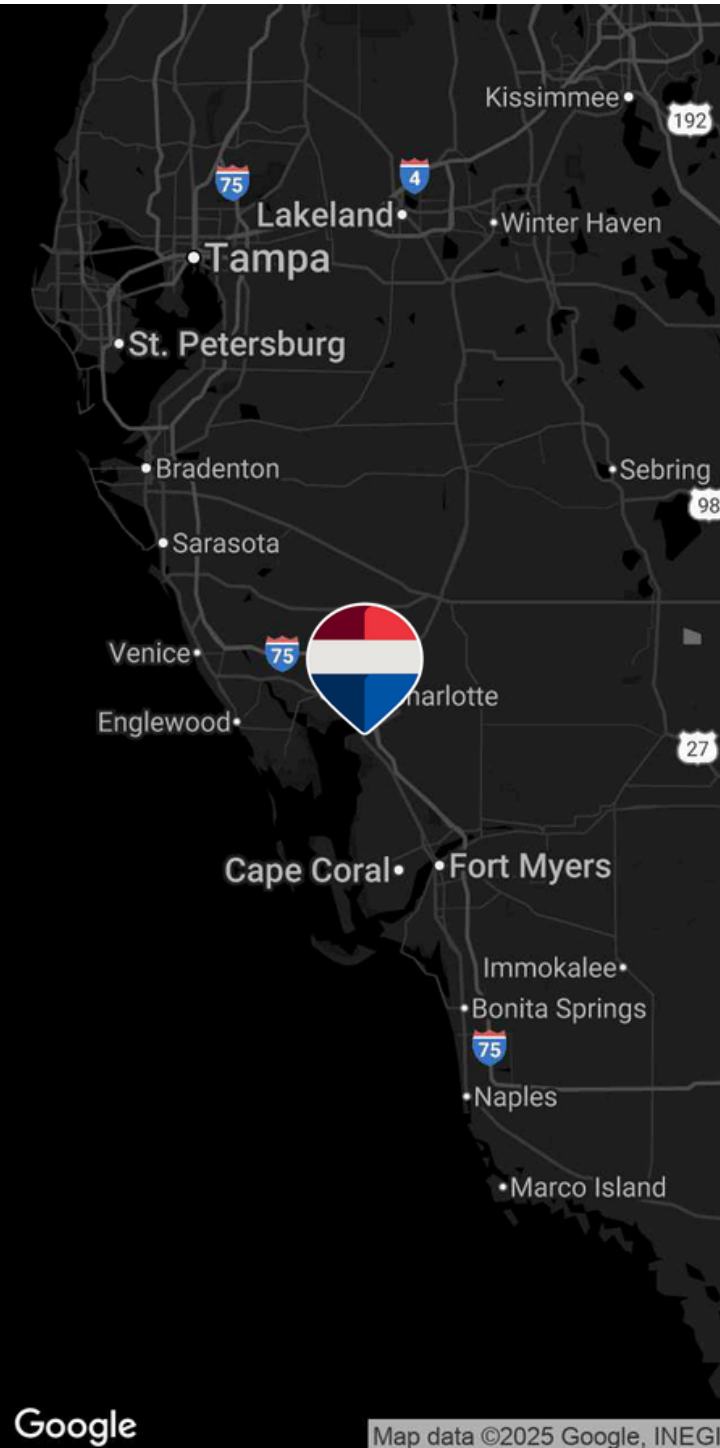


AVAILABLE FOR SALE

**140 TAMIAMI TRAIL
Punta Gorda, FL 33950**

REMAX
COMMERCIAL

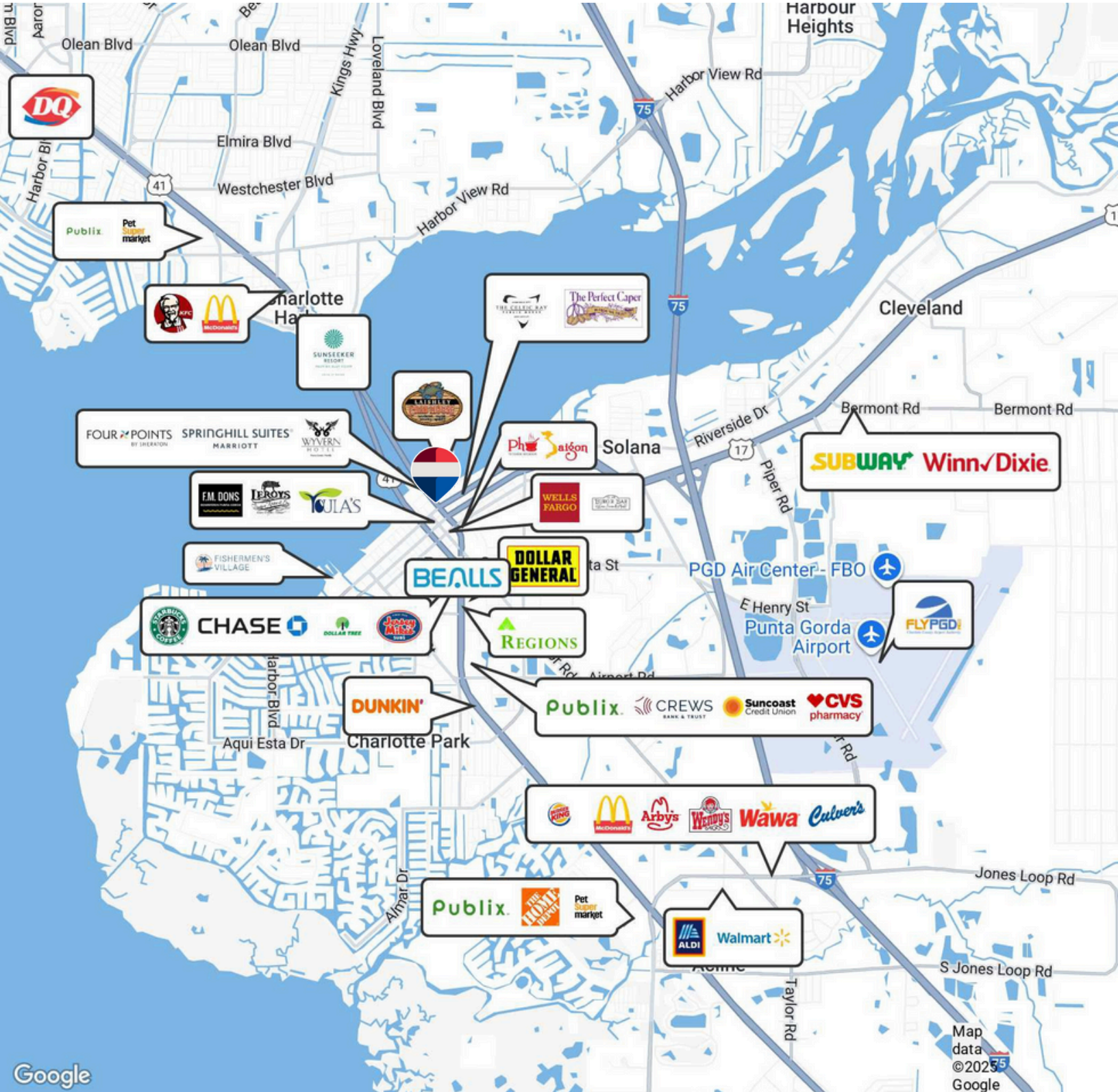
REMAX HARBOR REALTY



AVAILABLE FOR SALE
140 TAMIAMI TRAIL
Punta Gorda, FL 33950

REMAX
COMMERCIAL

REMAX HARBOR REALTY

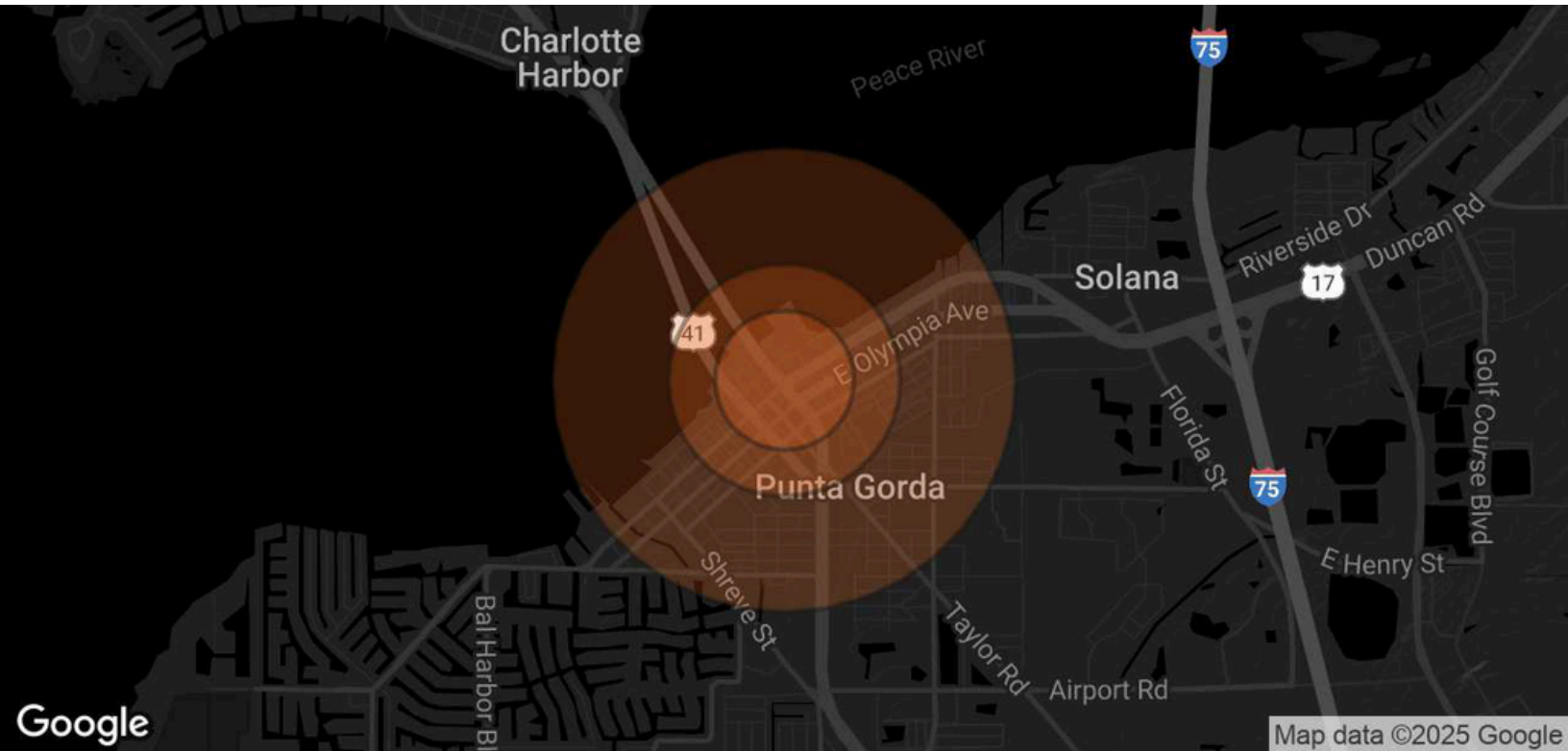


AVAILABLE FOR SALE

140 TAMIAMI TRAIL
Punta Gorda, FL 33950

REMAX
COMMERCIAL

REMAX HARBOR REALTY



POPULATION	0.3 MILES	0.5 MILES	1 MILE
TOTAL POPULATION	276	771	2,878
AVERAGE AGE	57	57	53
AVERAGE AGE (MALE)	56	56	52
AVERAGE AGE (FEMALE)	59	58	54
HOUSEHOLDS & INCOME	0.3 MILES	0.5 MILES	1 MILE
TOTAL HOUSE HOLDS	139	388	1,411
# OF PERSONS PER HH	2	2	2
AVERAGE AGE (MALE)HH	\$86,273	\$84,418	\$75,301
AVERAGE HOUSE VALUE	\$472,607	\$457,846	\$420,560

Demographics data derived from AlphaMap

140 TAMiami TRAIL PUNTA GORDA, FL 33950

CONTACT

Hunter McCarthy
Commercial Advisor
Tel: 941.421.9569
hunter.mccarthy@remax.net



Margeaux McCarthy
Commercial Advisor
Tel: 401.688.0822
m.mccarthy@remax.net



REMAX
COMMERCIAL®

REMAX HARBOR REALTY