

**RELIGIOUS/  
EDUCATIONAL  
FACILITY**



This photo was edited using AI.

**BEN CHERRY, CCIM**

Phone: 314.647.6611 ext. 115  
[Ben@ManorRealEstate.com](mailto:Ben@ManorRealEstate.com)

**DILLON FLYNN**

Phone: 314.647.6611 ext. 124  
[Dillon@ManorRealEstate.com](mailto:Dillon@ManorRealEstate.com)

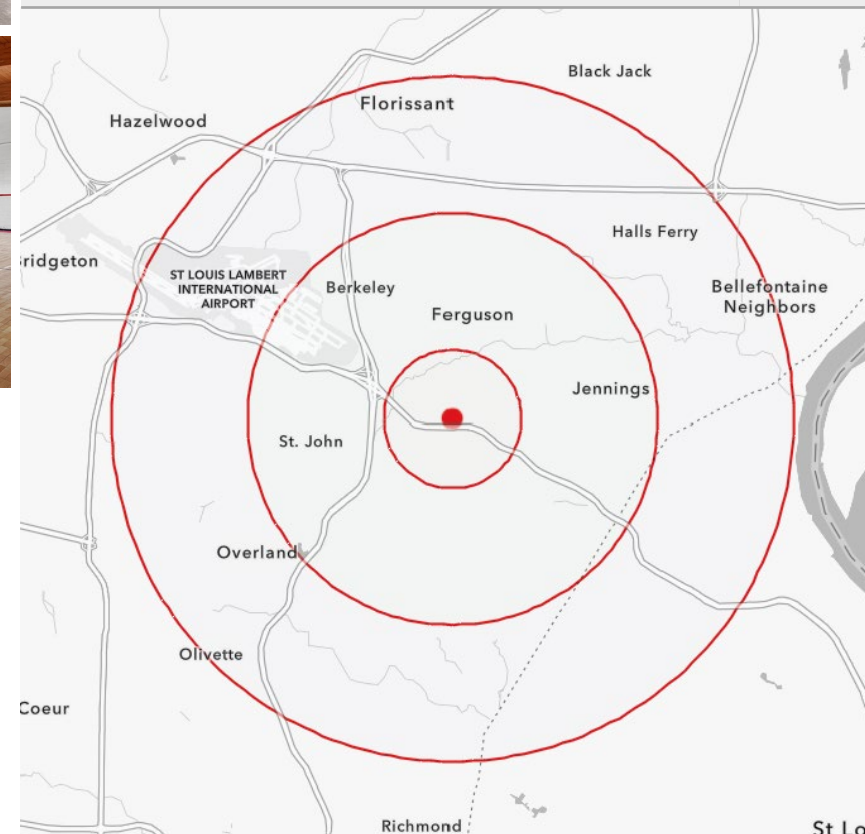
**206 EMERLING DRIVE  
ST. LOUIS, MO 63121  
~45,612 S.F. | \$1,699,000 (\$37.25/S.F.)**

### PROPERTY INFORMATION



- RELIGIOUS / EDUCATIONAL FACILITY CONSISTING OF 2 BUILDINGS
- ~45,612 SF OF EXISTING IMPROVEMENTS INCLUDING A LARGE SANCTUARY, CLASSROOMS, GYM AND SUPPORTING SPACES
- I-70 VISIBILITY, 158,032 VEHICLES PER DAY
- 130 SURFACE PARKING SPACES
- 10.74 ACRES SITE IN INNER-RING ST. LOUIS COUNTY
- CLAYCO HQ, EXPRESS SCRIPTS, AMAZON WAREHOUSE, UMSL AND LAMBERT INT'L AIRPORT ALL WITHIN 0.5 MILES

DEMOGRAPHICS	1 MILE	3 MILES	5 MILES
POPULATION	7,524	85,356	261,128
HOUSEHOLDS	3,102	35,544	112,121
AVERAGE HH INCOME	\$63,398	\$61,386	\$77,697



**BEN CHERRY, CCIM**

Phone: 314.647.6611 ext. 115  
[Ben@ManorRealEstate.com](mailto:Ben@ManorRealEstate.com)

**DILLON FLYNN**

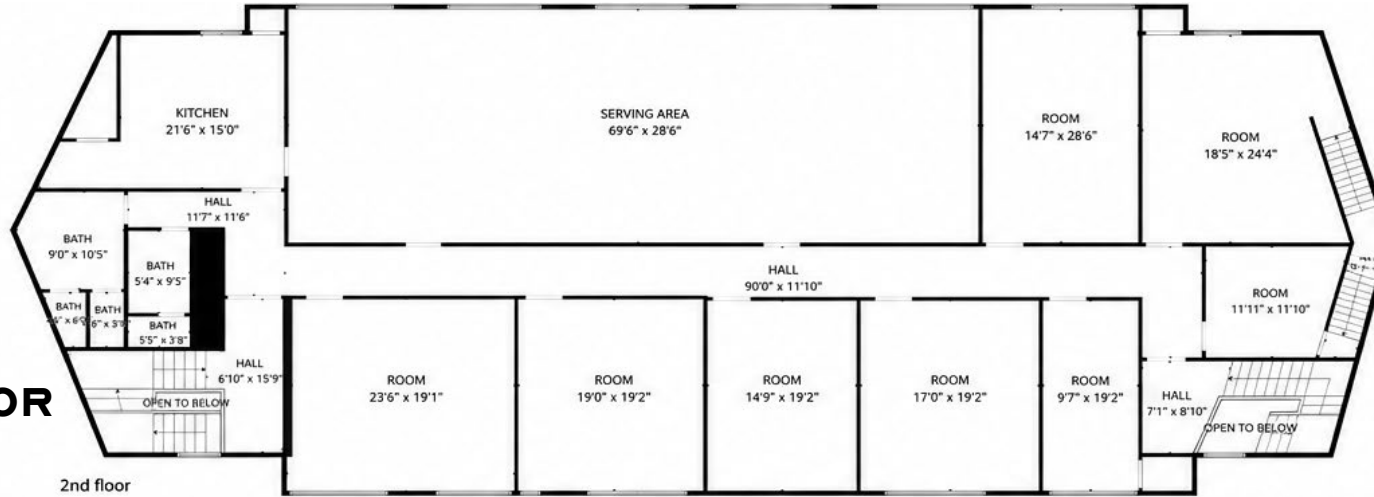
Phone: 314.647.6611 ext. 124  
[Dillon@ManorRealEstate.com](mailto:Dillon@ManorRealEstate.com)

**206 EMERLING DRIVE  
 ST. LOUIS, MO 63121**

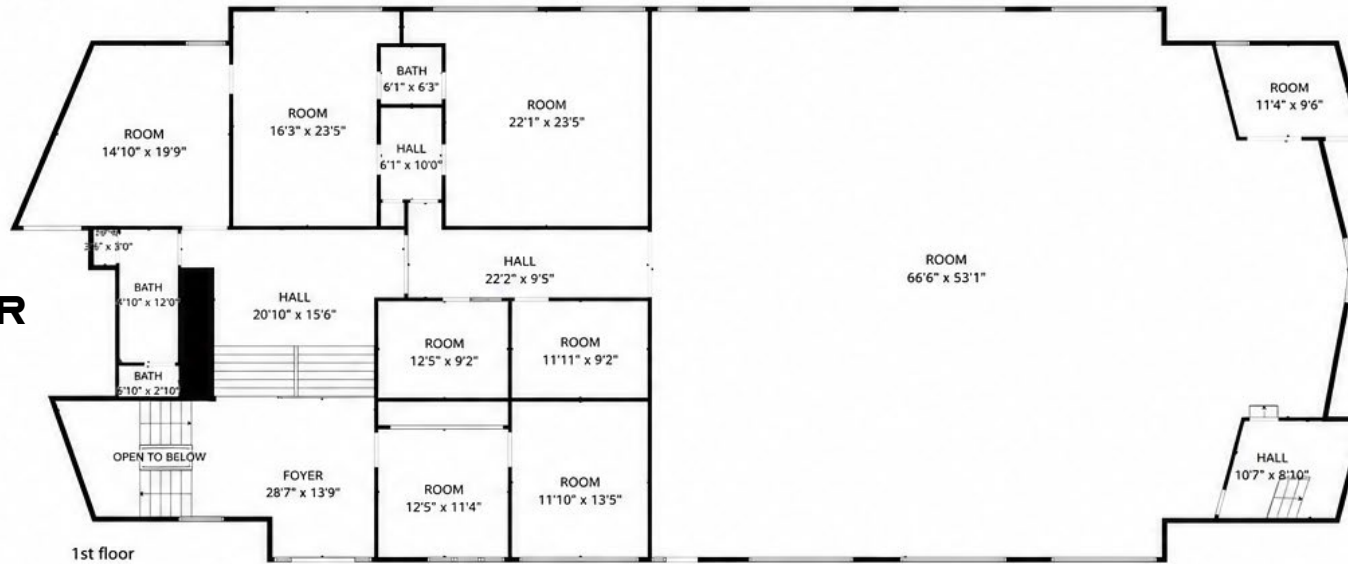
**~45,612 S.F. | \$1,699,000 (\$37.25/S.F.)**

### BUILDING A

### SECOND FLOOR



### FIRST FLOOR



**TOTAL SQUARE  
FOOTAGE:  
~17,928 S.F.**

**BEN CHERRY, CCIM**

Phone: 314.647.6611 ext. 115  
Ben@ManorRealEstate.com

**DILLON FLYNN**

Phone: 314.647.6611 ext. 124  
Dillon@ManorRealEstate.com

**206 EMERLING DRIVE  
ST. LOUIS, MO 63121  
~45,612 S.F. | \$1,699,000 (\$37.25/S.F.)**



AERIAL

ST. LOUIS LAMBERT  
INTERNATIONAL  
AIRPORT



CHAMBERS ROAD



CLAYCO

**SITE**



UNIVERSITY OF  
MISSOURI ST. LOUIS

**BEN CHERRY, CCIM**

Phone: 314.647.6611 ext. 115  
Ben@ManorRealEstate.com

**DILLON FLYNN**

Phone: 314.647.6611 ext. 124  
Dillon@ManorRealEstate.com

206 EMERLING DRIVE  
ST. LOUIS, MO 63121  
~45,612 S.F. | \$1,699,000 (\$37.25/S.F.)