

CREEKSIDE SHOPPING CENTER

RETAIL OR OFFICE
FOR LEASE

9900 SWANSON BLVD.
CLIVE, IOWA 50325
WWW.CBRE.COM/DESMOINES



AVAILABLE SPACE

- | | | |
|-------------------|----------|----------------|
| — Suite 9908-9914 | 3,218 SF | \$10.00/SF NNN |
| — Suite 9926 | 3,611 SF | \$10.00/SF NNN |

CAMIT

- \$6.14 SF

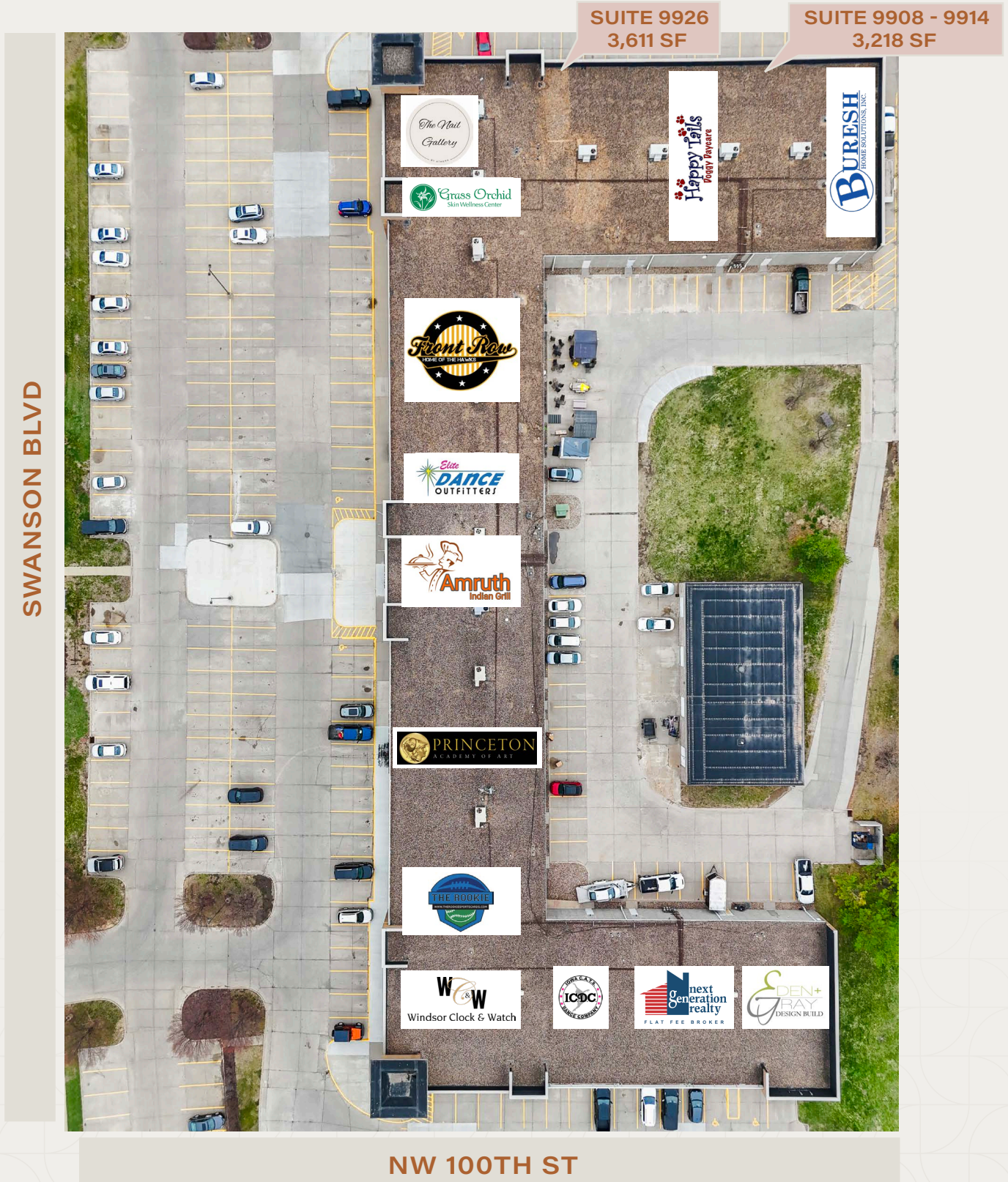
BUILDING FEATURES

- On the corner of NW 100th Street and Swanson Boulevard
- Ample Parking
- Constructed in 2000
- Hickman Road: 23,300 VPD
- 100th Street: 22,100 VPD
- Tenants include: Windsor Clock & Watch Co., Grass Orchid Skin Wellness Center, Buresh Window Solutions, Happy Tails Doggy Daycare, The Rookie Sports Cards Store, Front Row Bar and Grill, Elite Dance Outfitters, Amruth Indian Grill, Eden and Gray, The Nail Gallery and Iowa Cats Dance Company

CREEKSIDE SHOPPING CENTER
9900 Swanson Blvd | Clive, Iowa 50325

FOR LEASE

TENANT MIX



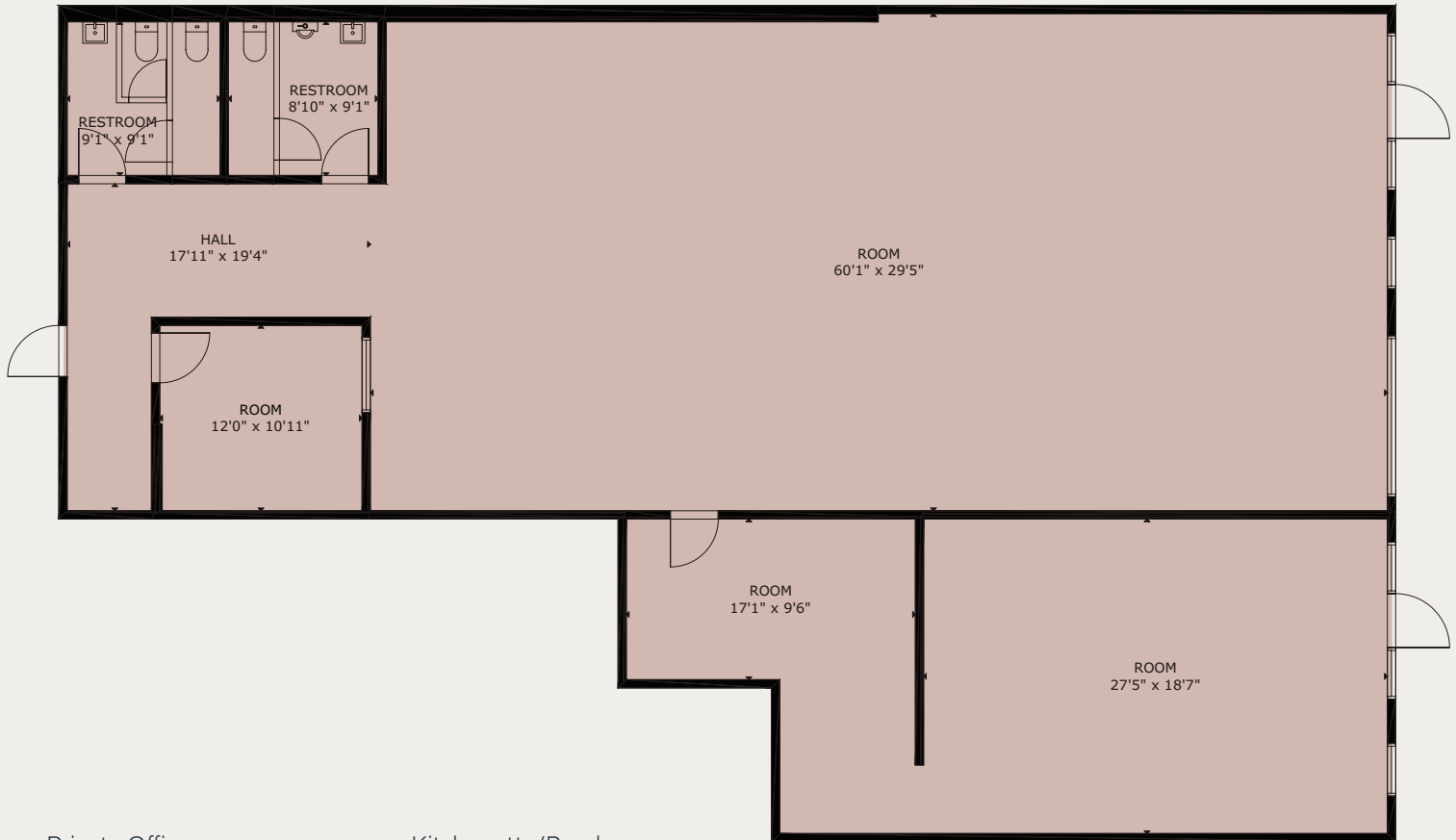
CREEKSIDE SHOPPING CENTER

9900 Swanson Blvd | Clive, Iowa 50325

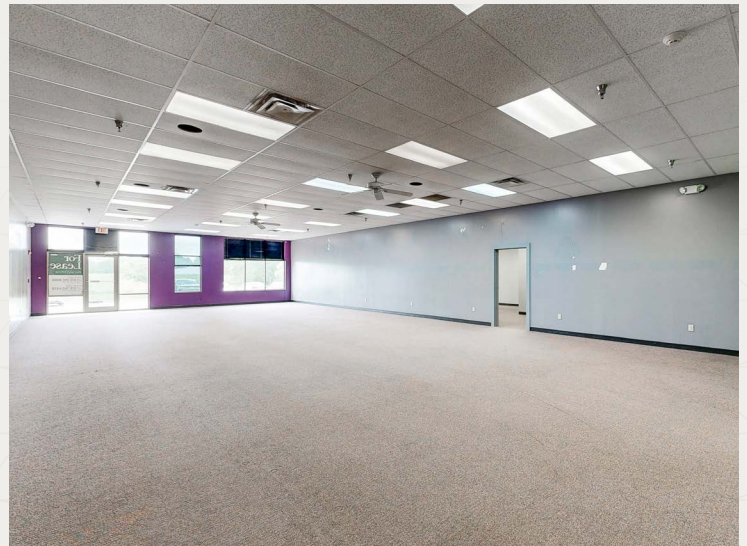
FOR LEASE

SUITE 9908-9914

3,218 SF



- + Private Office
- + Large Open Work Area
- + Conference Room
- + Kitchenette/Breakroom
- + Two Sets Of Restrooms

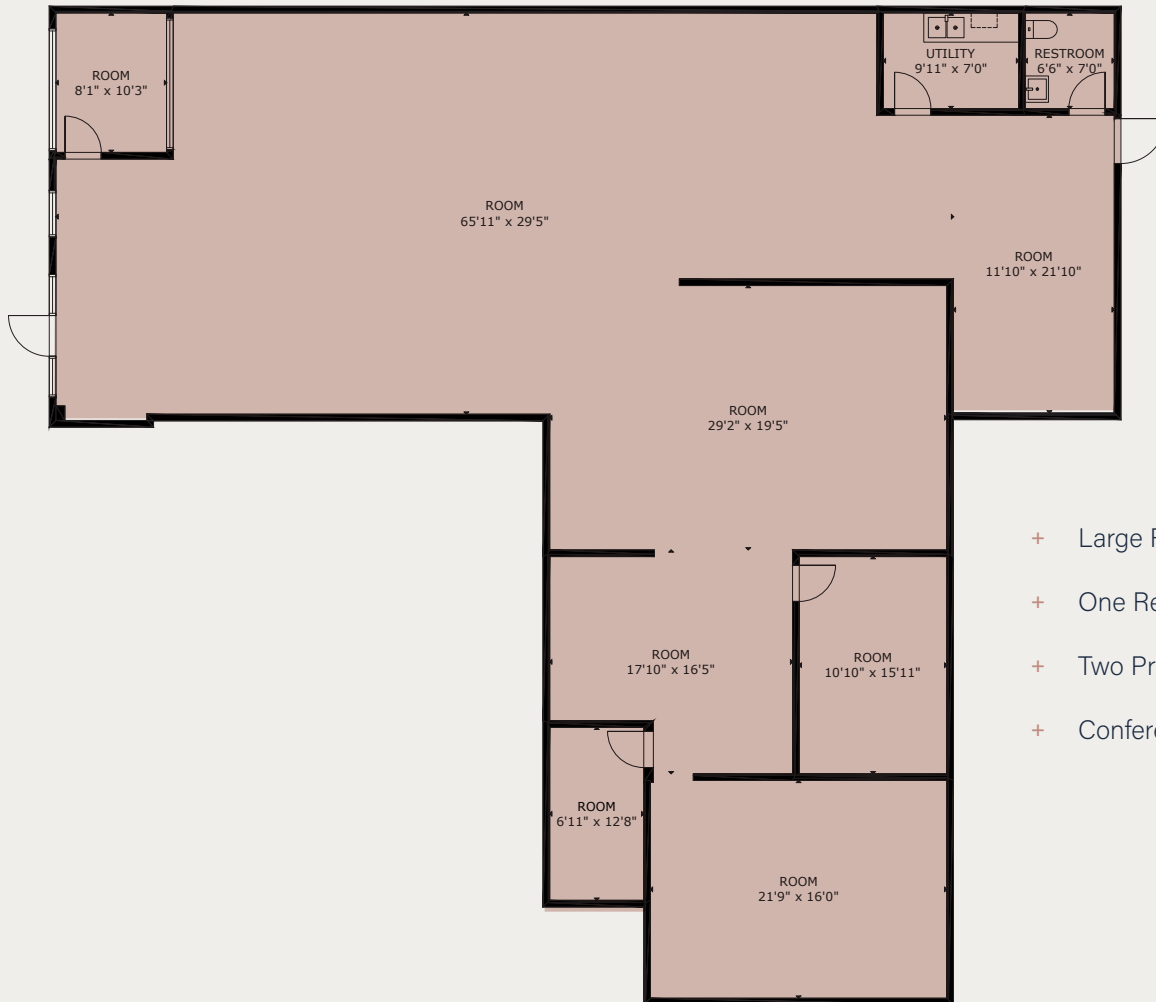


CREEKSIDE SHOPPING CENTER
9900 Swanson Blvd | Clive, Iowa 50325

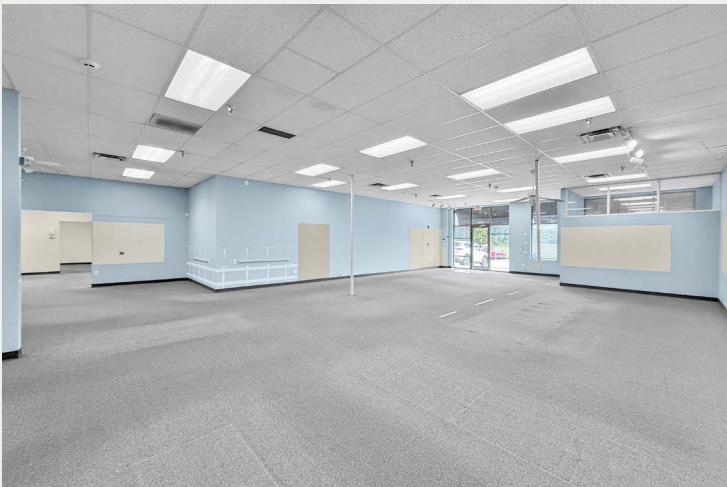
FOR LEASE

SUITE 9926

3,611 SF



- + Large Retail Showroom
- + One Restroom
- + Two Private Offices
- + Conference Room



LOCATION



CONTACT US

BILL WRIGHT
Senior Vice President

+1 515 210 3050
bill.wright2@cbre.com
Licensed in the State of Iowa.

GRANT WRIGHT, CCIM
First Vice President

+1 515 745 5113
grant.wright@cbre.com
Licensed in the State of Iowa.

CHRIS PENDROY, CCIM, SIOR
Senior Vice President

+1 515 402 6600
chris.pendroy@cbre.com
Licensed in the State of Iowa.

DAKOTA LITTLE
Senior Associate

+1 515 745 4378
dakota.little@cbre.com
Licensed in the State of Iowa.

CBRE

© 2025 CBRE, Inc. All rights reserved. This information has been obtained from sources believed reliable but has not been verified for accuracy or completeness. CBRE, Inc. makes no guarantee, representation or warranty and accepts no responsibility or liability as to the accuracy, completeness, or reliability of the information contained herein. You should conduct a careful, independent investigation of the property and verify all information. Any reliance on this information is solely at your own risk. CBRE and the CBRE logo are service marks of CBRE, Inc. All other marks displayed on this document are the property of their respective owners, and the use of such marks does not imply any affiliation with or endorsement of CBRE. Photos herein are the property of their respective owners. Use of these images without the express written consent of the owner is prohibited.