

FOR LEASE

508 Capital Circle SE Tallahassee, FL 32301



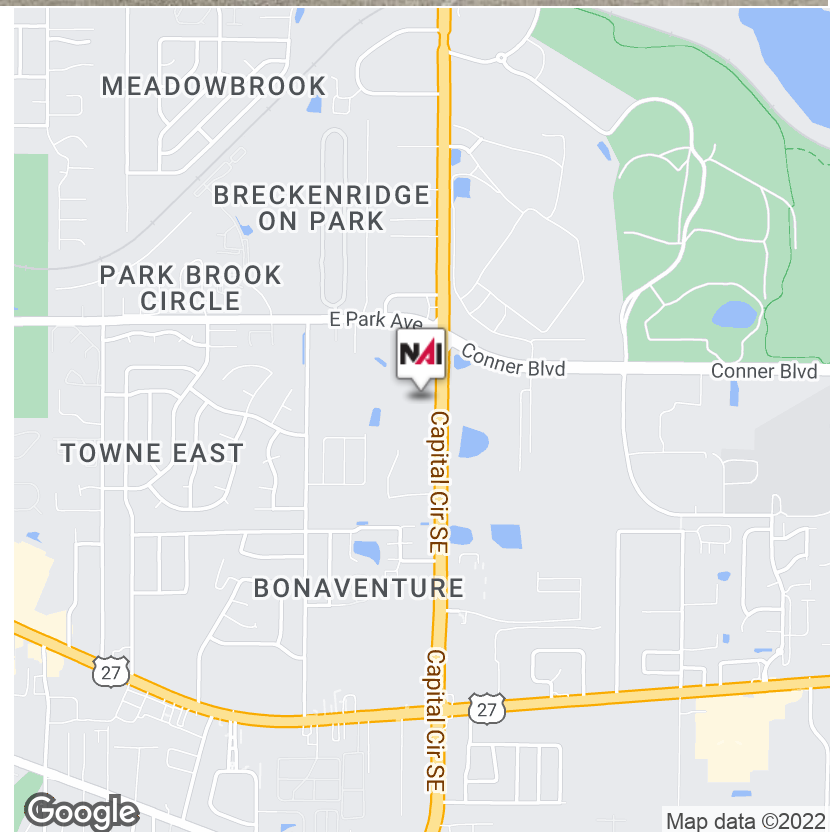
OFFICE | 6,313 SF

Turn-key space with several offices, break room(s), conference rooms, large storage area, and excellent visibility on Capital Circle SE

- Capital Circle Visibility
- Close Proximity to Apalachee Parkway, Southwood, and Highway 90

AVAILABLE Spaces

Spaces	Lease Rate	Size (SF)
508B	\$12.00 SF/yr	6,313



John W. McNeill, SIOR
+1 850 251 5504
jmcneill@talcor.com

No Warranty Or Representation, Express Or Implied, Is Made As To The Accuracy Of The Information Contained Herein, And The Same Is Submitted Subject To Errors, Omissions, Change Of Price, Rental Or Other Conditions, Prior Sale, Lease Or Financing, Or Withdrawal Without Notice, And Of Any Special Listing Conditions Imposed By Our Principals No Warranties Or Representations Are Made As To The Condition Of The Property Or Any Hazards Contained Therein Are Any To Be Implied.



NAI TALCOR
1018 Thomasville Road, Suite 200A
talcor.com

FOR LEASE

508 Capital Circle SE Tallahassee, FL 32301



John W. McNeill, SIOR
+1 850 251 5504
jmcneill@talc.com

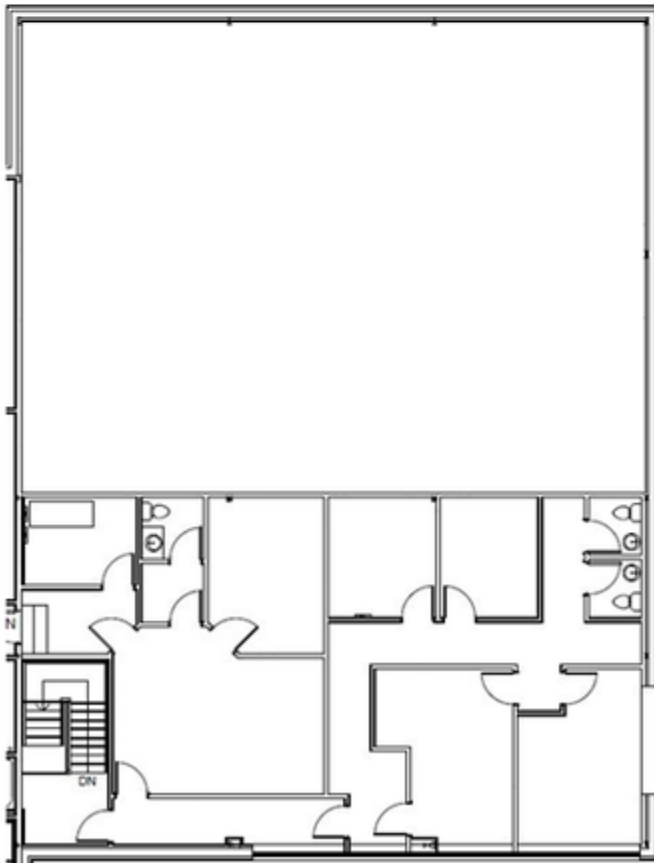
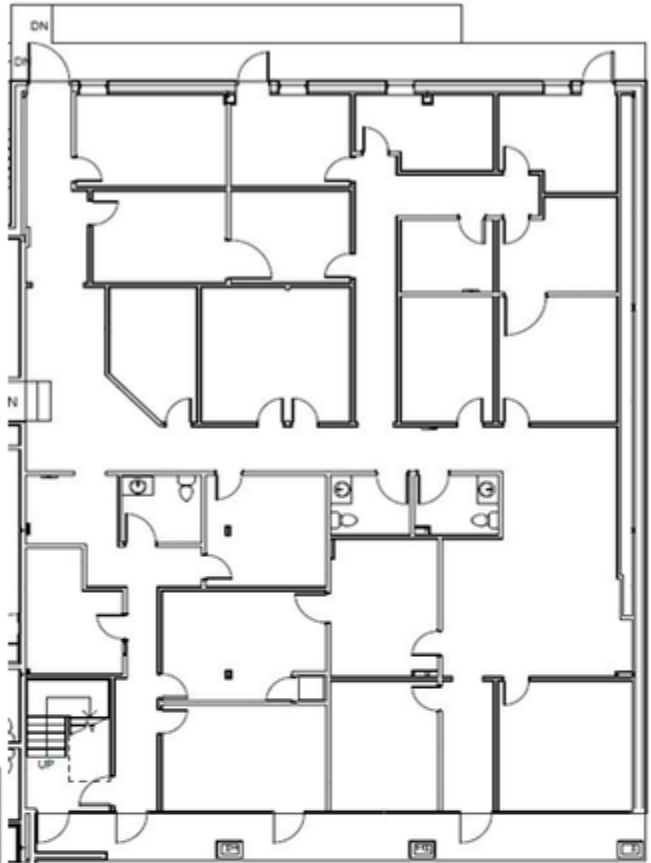
No Warranty Or Representation, Express Or Implied, Is Made As To The Accuracy Of The Information Contained Herein, And The Same Is Submitted Subject To Errors, Omissions, Change Of Price, Rental Or Other Conditions, Prior Sale, Lease Or Financing, Or Withdrawal Without Notice, And Of Any Special Listing Conditions Imposed By Our Principals No Warranties Or Representations Are Made As To The Condition Of The Property Or Any Hazards Contained Therein Are Any To Be Implied.

NAITACOR

FOR LEASE

508 Capital Circle SE Tallahassee, FL 32301

FIRST FLOOR



SECOND FLOOR