

CBRE

FOR SALE

WATERFRONT DEVELOPMENT OPPORTUNITY

# RAILROAD PLACE

ISLAND PARK, NEW YORK

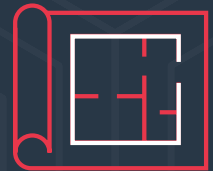


# Property Specifications

5 Acres of Vacant Land in the Densely Populated Region of Nassau County



Railroad Place,  
Island Park, Town of Hempstead  
Nassau County, New York 11558



Parcel A – 2.4642 Acres  
Parcel B – 2.51247 Acres



Parcel A - Commercial A District – Village of Island Park  
Transit Oriented Development (“TOD”) Overlay  
waterfront subdistrict  
Parcel B - Commercial B District – Village of Island Park  
Transit Oriented Development (“TOD”) Overlay  
business subdistrict



Call for pricing - Can be purchased together  
or individually

**PARCEL B**  
711 Railroad Pl  
**2.5127 ACRES**

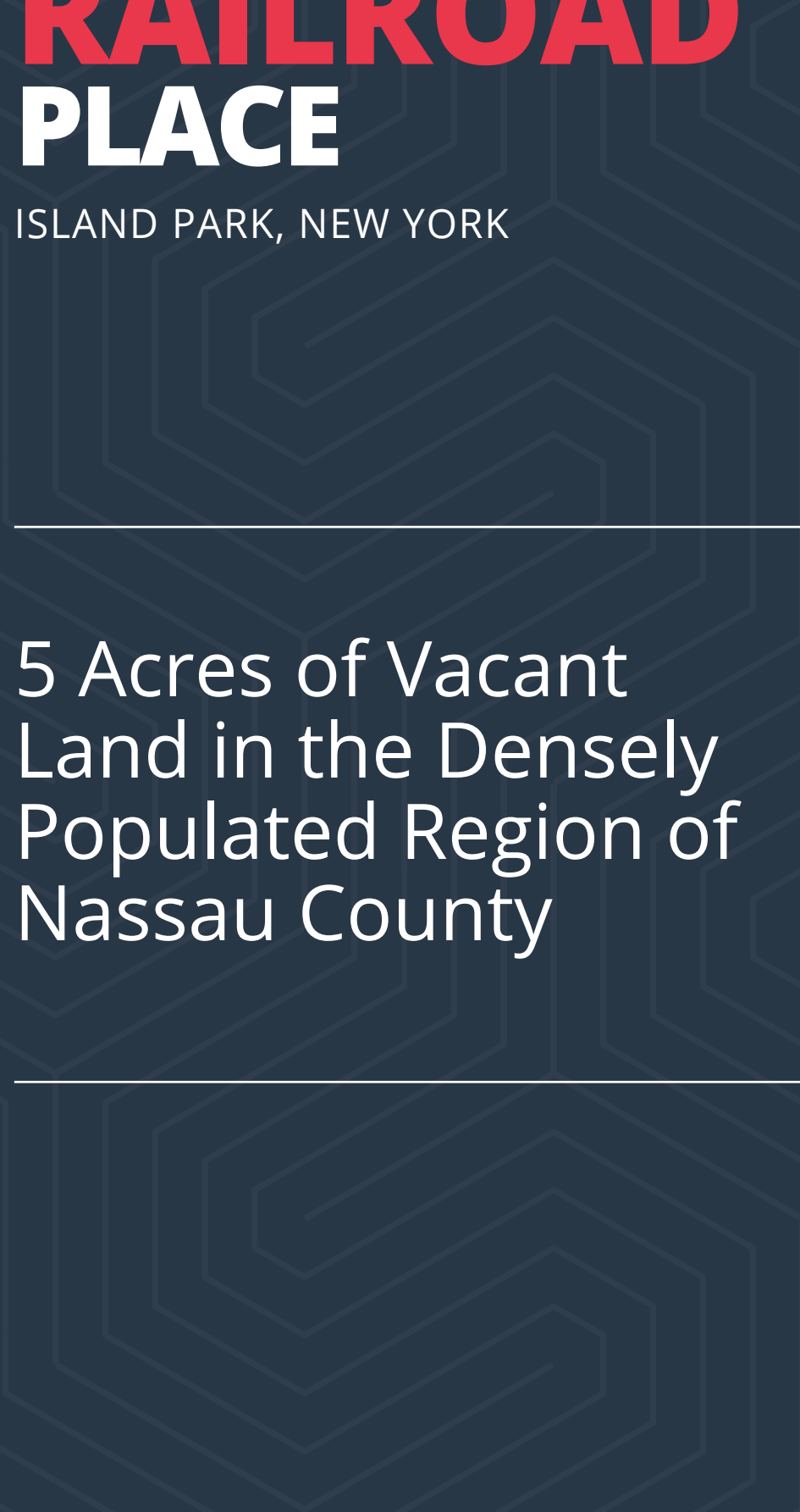
**PARCEL A**  
15 Railroad Pl  
**2.4642 ACRES**



# RAILROAD PLACE

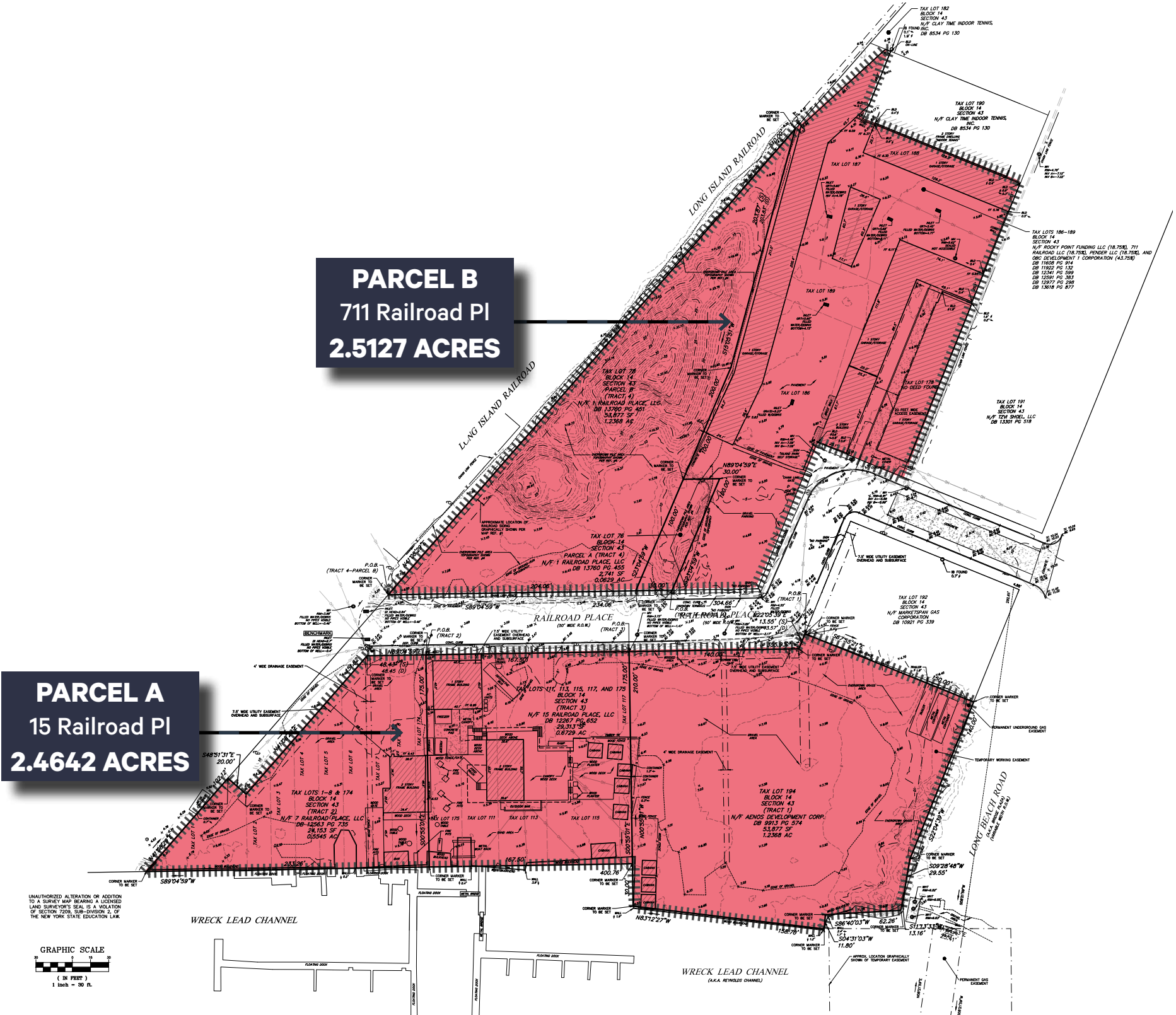
ISLAND PARK, NEW YORK

5 Acres of Vacant Land in the Densely Populated Region of Nassau County



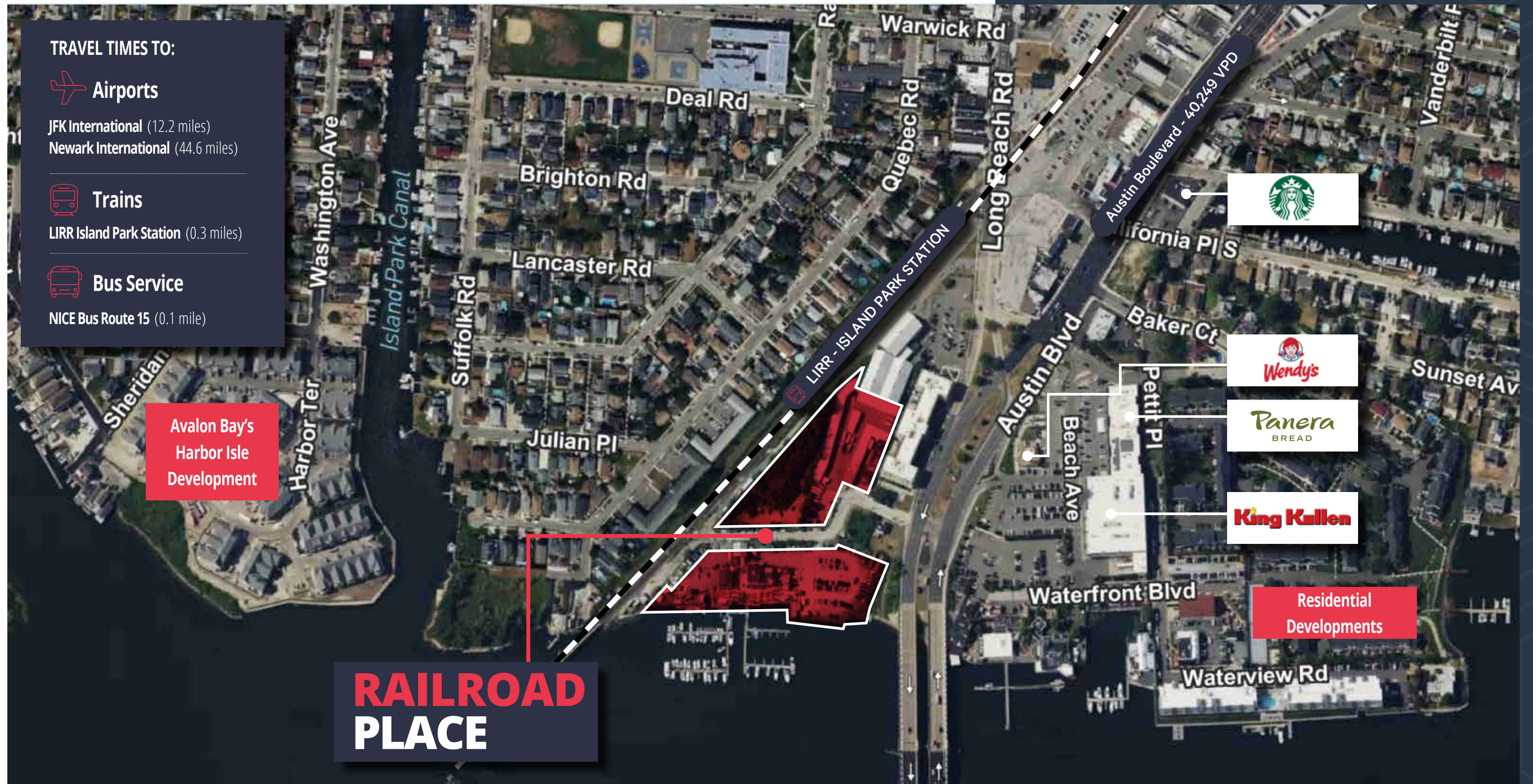
**PARCEL B**  
711 Railroad Pl  
2.5127 ACRES

**PARCEL A**  
15 Railroad Pl  
2.4642 ACRES

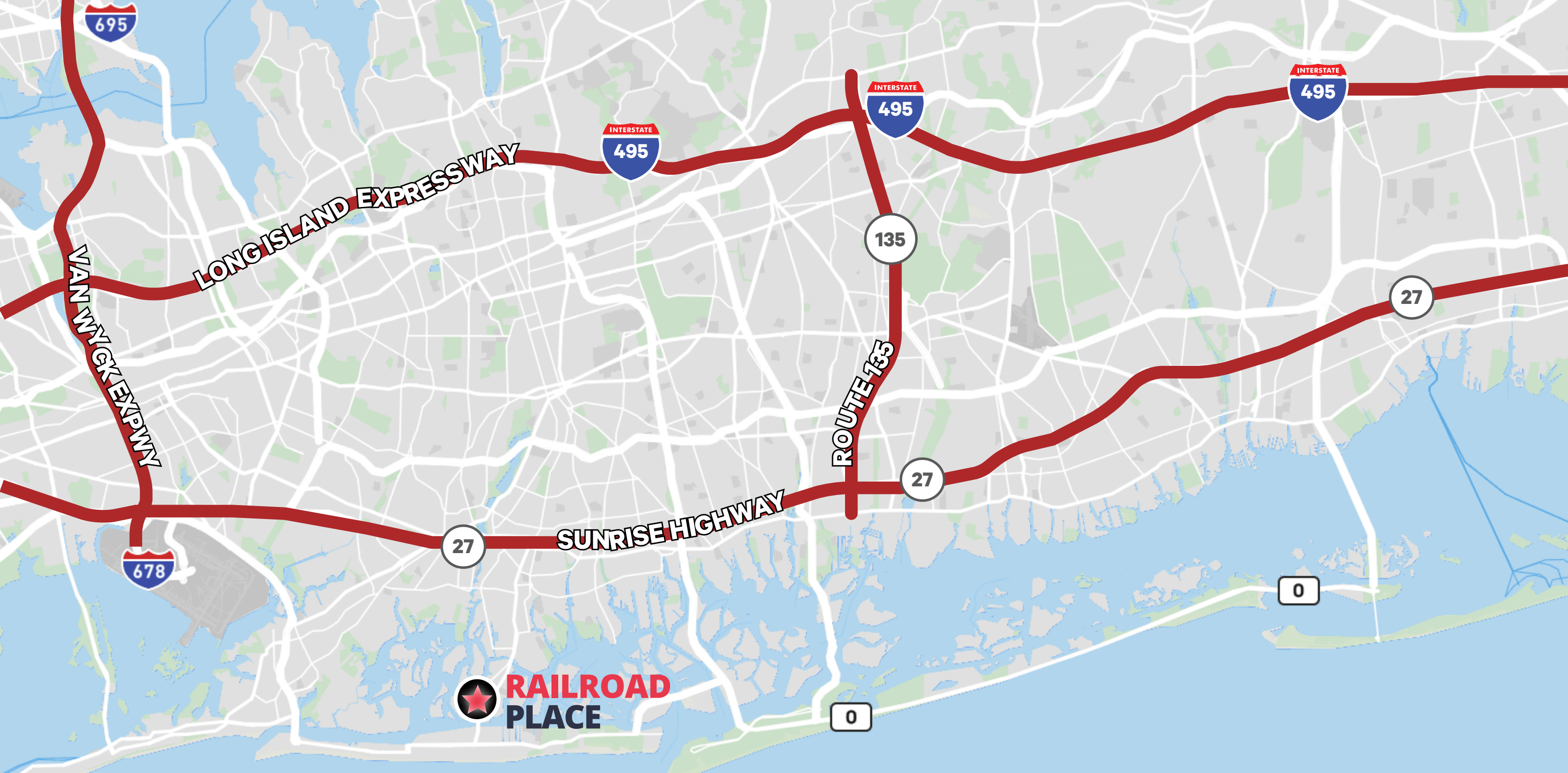




# Superb Nassau Location







CONTACT US

ADAM  
BASS  
+1 631 370 6028  
adam.bass@cbre.com

ERIC  
GILLMAN  
+1 631 370 6034  
eric.gillman@cbre.com



© 2025 CBRE, Inc. All rights reserved. This information has been obtained from sources believed reliable but has not been verified for accuracy or completeness. CBRE, Inc. makes no guarantee, representation or warranty and accepts no responsibility or liability as to the accuracy, completeness, or reliability of the information contained herein. You should conduct a careful, independent investigation of the property and verify all information. Any reliance on this information is solely at your own risk. CBRE and the CBRE logo are service marks of CBRE, Inc. All other marks displayed on this document are the property of their respective owners, and the use of such marks does not imply any affiliation with or endorsement of CBRE. Photos herein are the property of their respective owners. Use of these images without the express written consent of the owner is prohibited.