



SOUTH PARK GROUP

www.southparkgroup.com



FOR LEASE

PRIME RETAIL

144 South La Brea Avenue
Los Angeles, California 90036

Located between First and Second Streets.
Steps from Maison Midi, Undeafated,
American Rag, Union, Stussy and Sugarfish,
just to name a few.

SAM MINASIAN

Tel. 323.782.1261

E. samminasian@southparkgroup.com

No. 01212823

AVAILABLE SPACE

Size: Approximately 2,000 rentable sqft

Rate: Available upon request

Term: 3 to 5 years

Parking: 2 spaces

SOUTH PARK GROUP | 8322 Beverly Blvd., Suite 301 | Los Angeles, CA 90048

This information has been furnished by sources that we deem reliable, but for which we assume no liability. The information contained herein is given, in confidence, with the understanding that all negotiations pertaining to this property be handled through the submitting office. All measurements are approximate.

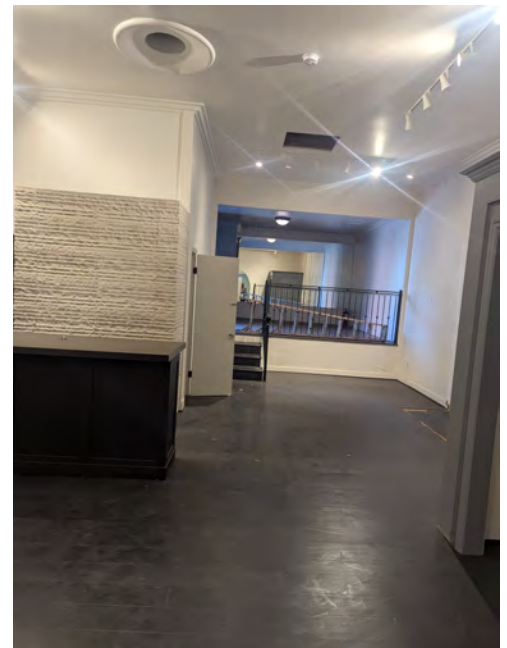
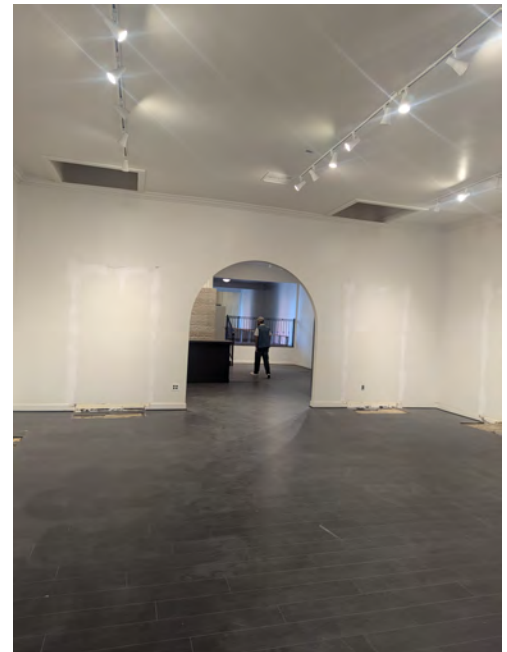


SOUTH PARK GROUP

www.southparkgroup.com

INTERIOR

144 S. La Brea Avenue, Los Angeles, California 90036



SOUTH PARK GROUP | 8322 Beverly Blvd., Suite 301 | Los Angeles, CA 90048

This information has been furnished by sources that we deem reliable, but for which we assume no liability. The information contained herein is given, in confidence, with the understanding that all negotiations pertaining to this property be handled through the submitting office. All measurements are approximate.