

**PRIME NEW HYDE PARK  
INDUSTRIAL PROPERTY  
FOR SALE OR LEASE:  
PRICE REDUCED!**



**110 Denton Avenue  
New Hyde Park, NY**

### Property Description

- Building Size: 12,500 SF
- Lot Size : 15,699 SF
- Ceiling Height: 16.5 ' Clear
- 1 Loading Dock / 1 Drive-in
- Ground Floor Office: 2,000 SF
- Stories: 2 (Mezzanine)
- Gas/Sewers: Yes/Yes
- Power: 600 Amps (3-Phase)
- Sprinklers: Yes
- Parking: Rear Of Building & Street
- Taxes: \$52,689

For Information Contact Exclusive Broker:

**L u k e A n d e r s o n**

Licensed Real Estate Salesperson

Cell: 631.219.4599

Office: 631.694.3500 Ext 308

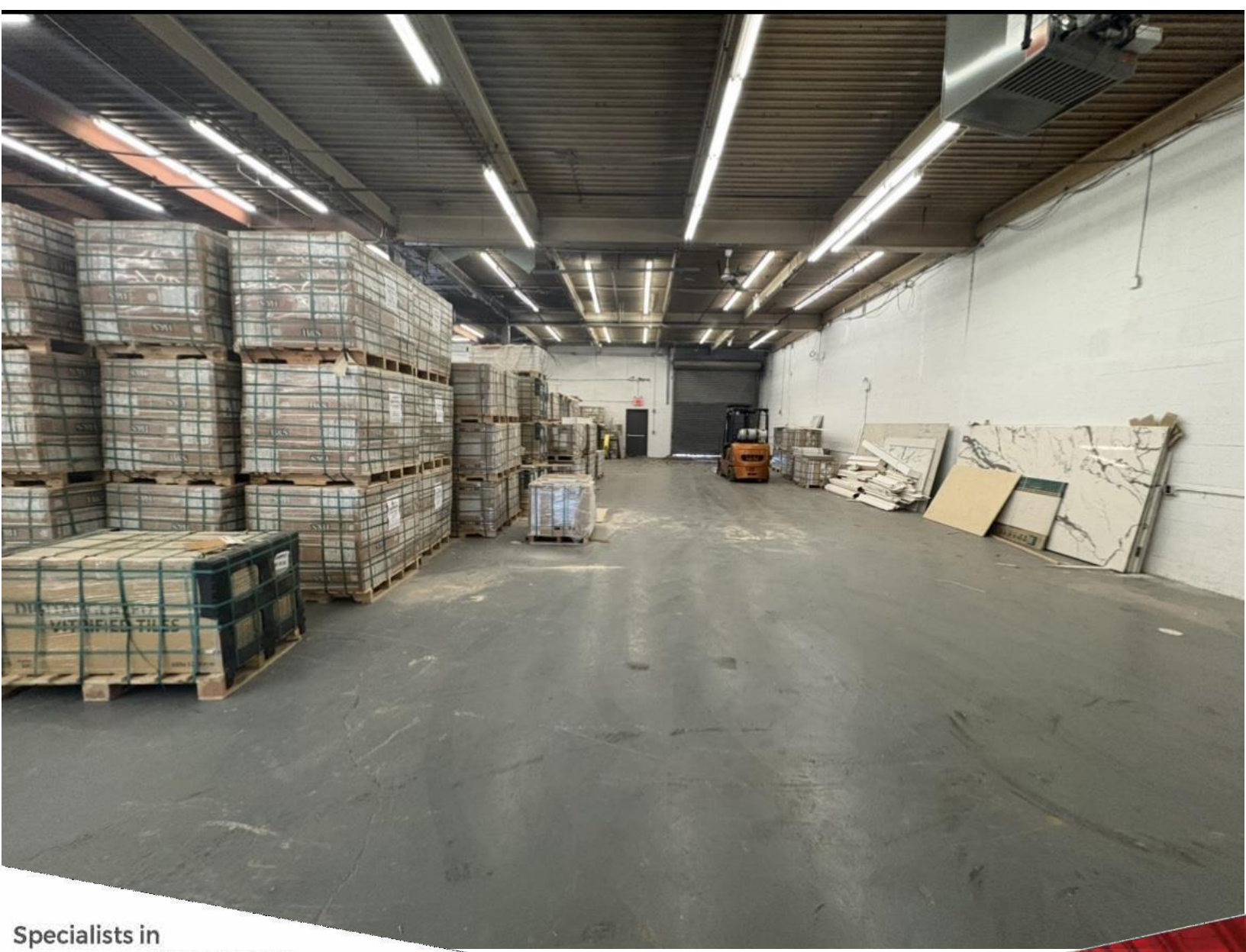
✉ [Landerson@industryone.com](mailto:Landerson@industryone.com)



**For Sale- Was \$4,500,000  
NOW: \$3,900,000**

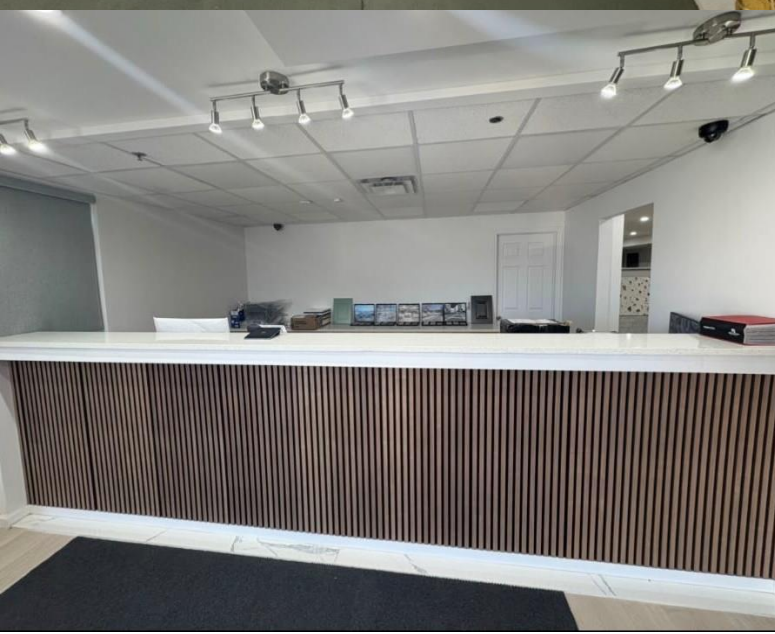
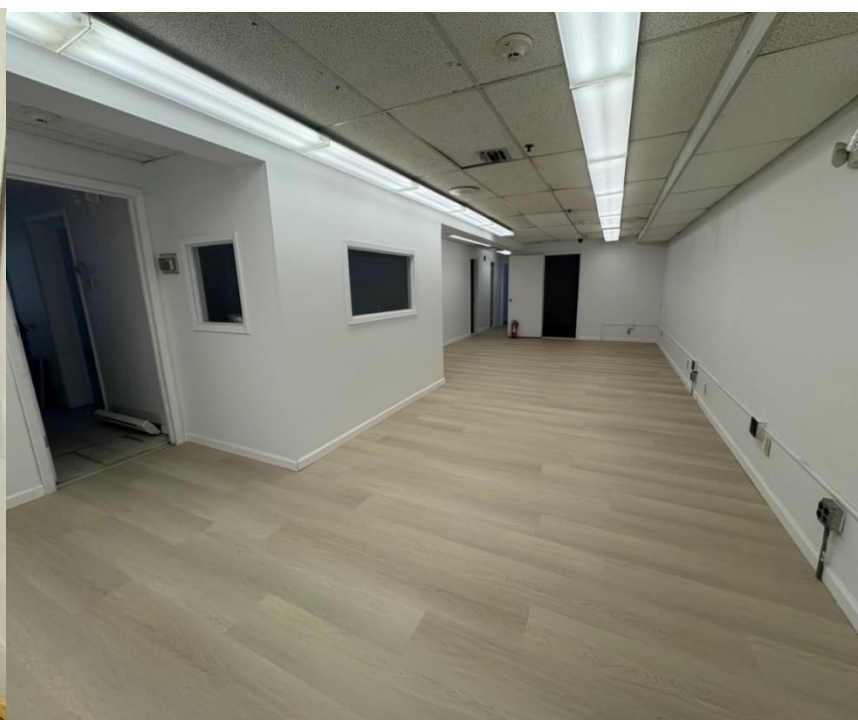
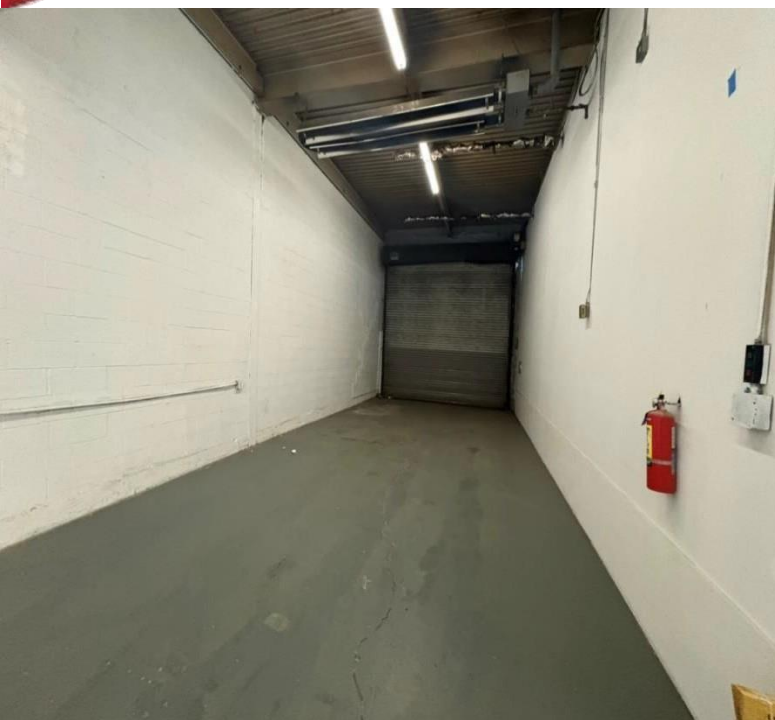
Specialists in  
Office, Industrial, Retail &  
Investment Real Estate Since 1985

All information is from sources deemed reliable, and is submitted subject to errors, omissions, change of price, rental, prior sale and withdrawal without notice.



**Specialists in  
Office, Industrial, Retail &  
Investment Real Estate Since 1985**

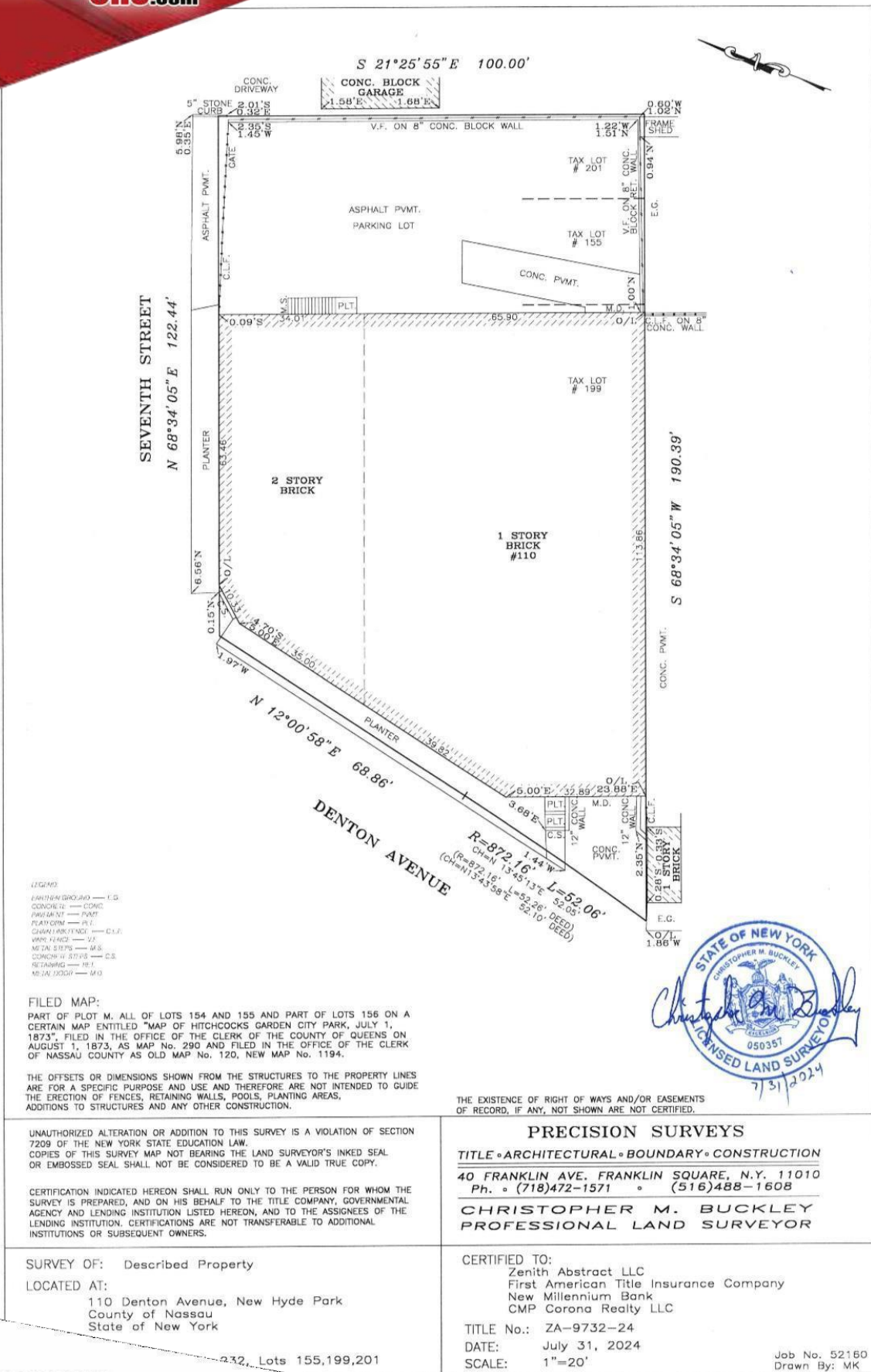
*All information is from sources deemed reliable, and is submitted subject to errors, omissions, change of price, rental, prior sale and withdrawal without notice.*



**Specialists in  
Office, Industrial, Retail &  
Investment Real Estate Since 1985**

*All information is from sources deemed reliable, and is submitted subject to errors, omissions, change of price, rental, prior sale and withdrawal without notice.*

**631-694-3500**  
**www.industryone.com**



**Specialists in**  
**Office, Industrial, Retail &**  
**Investment Real Estate Since 1985**

*All information is from sources deemed reliable, and is submitted subject to errors, omissions, change of price, rental, prior sale and withdrawal without notice.*