

930 Harvest Dr  
Blue Bell, PA

Two Suites Available  
For Sublease

PRICE REDUCED



## Property Overview



### AVAILABLE SUITES

- Suite 100: 14,471 SF
- Suite 110: 2,034 SF



SUBLEASE RATE/RSF  
\$17.00+ Utilities



### TIMING

Immediately



### PROPERTY TYPE

Class A Office Space



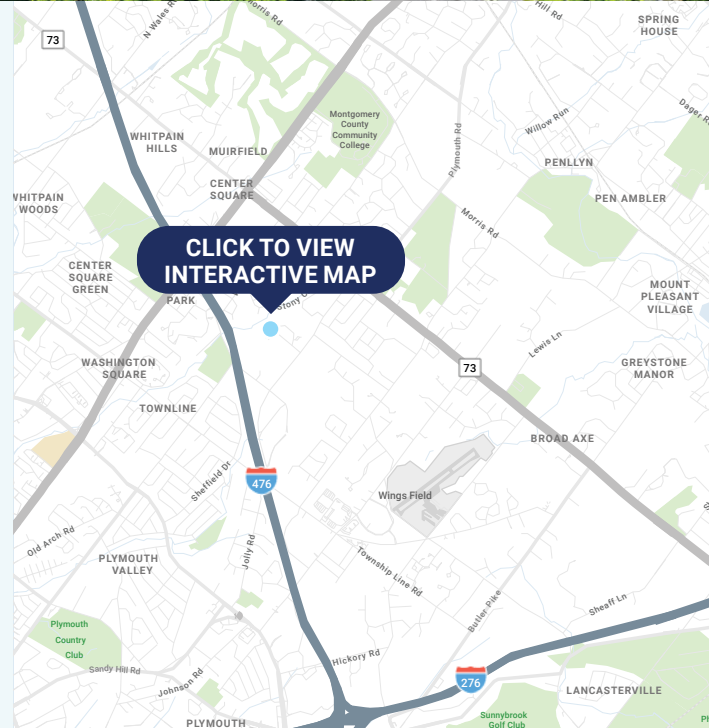
Ample Parking



Electric Vehicle  
Charging Stations



Conference Center, Grab & Go Café, Walking  
Trails, Tenant Lounge



TACTIX  
THE  
TENANT  
BROKER

DAN RITTERMAN  
(610) 247-2372  
dritterman@tactix.com

CATHERINE BIANCO  
(610) 688-1800  
cbianco@tactix.com



SAM PRUITT  
(214) 271-0585  
spruitt@siteselectiongroup.com

EMMA CABRALES  
(214) 271-0609  
ecabrales@siteselectiongroup.com

PAIGE KOURY  
(214) 271-0608  
pkoury@siteselectiongroup.com

The information contained herein was obtained from sources believed reliable; however, Site Selection Group makes no guarantees, warranties or representations as to the completeness or accuracy thereof. The presentation of this property is submitted subject to errors, omissions, change of price or conditions prior to sale or lease, or withdrawal without notice.

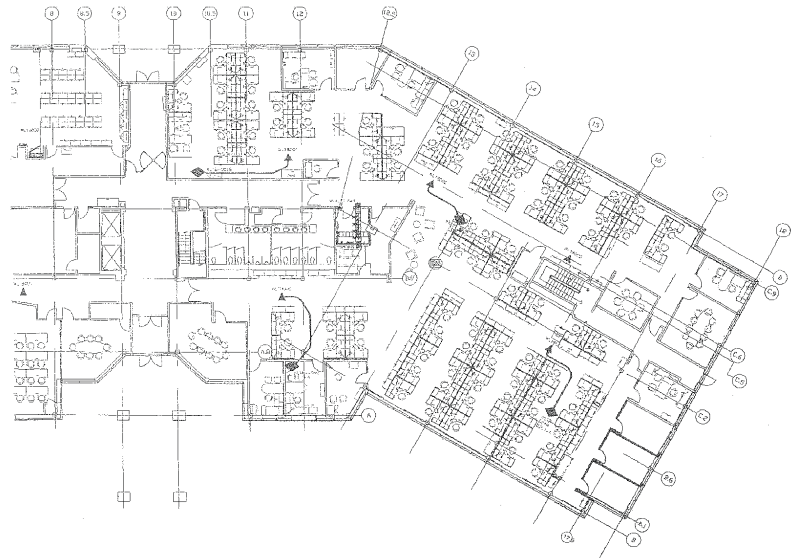
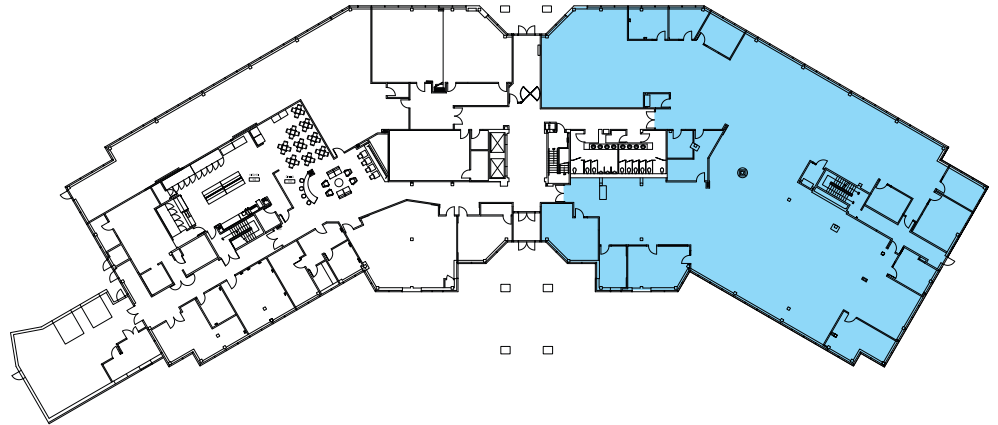


# 930 Harvest Dr Blue Bell, PA

Suite 100: 14,471 SF

## Suite Details

- 93 workstations
- 9 offices
- 2 conference rooms
- 1 stand alone training room



**TACTIX** THE  
TENANT  
BROKER

**DAN RITTERMAN**  
(610) 247-2372  
dritterman@tactix.com

**CATHERINE BIANCO**  
(610) 688-1800  
cbianco@tactix.com



**SAM PRUITT**  
(214) 271-0585  
spruitt@siteselectiongroup.com

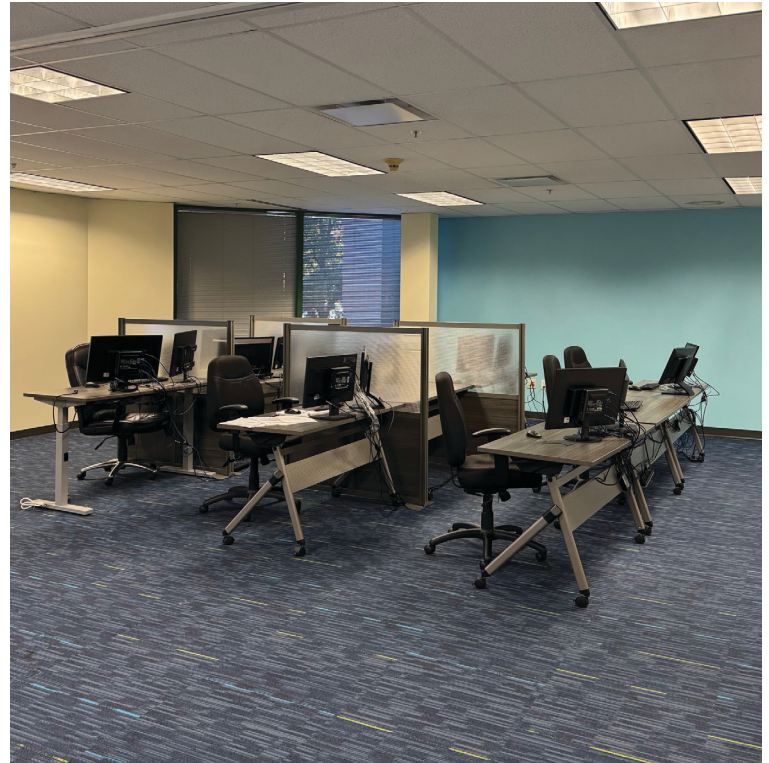
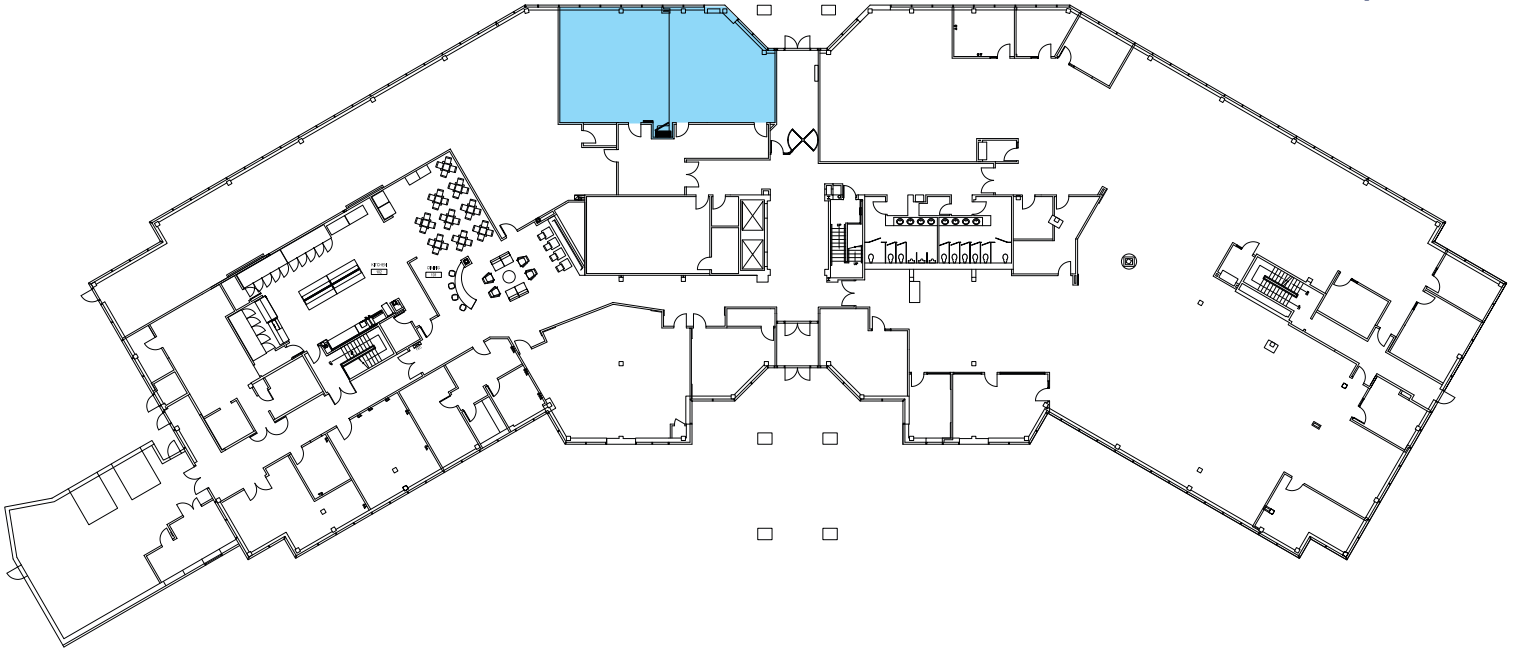
**EMMA CABRALES**  
(214) 271-0609  
ecabrales@siteselectiongroup.com

**PAIGE KOURY**  
(214) 271-0608  
pkoury@siteselectiongroup.com



# 930 Harvest Dr Blue Bell, PA

Suite 110: 2,034 SF



**TACTIX**  
THE  
TENANT  
BROKER

**DAN RITTERMAN**  
(610) 247-2372  
dritterman@tactix.com

**CATHERINE BIANCO**  
(610) 688-1800  
cbianco@tactix.com



**SAM PRUITT**  
(214) 271-0585  
spruitt@siteselectiongroup.com

**EMMA CABRALES**  
(214) 271-0609  
ecabrales@siteselectiongroup.com

**PAIGE KOURY**  
(214) 271-0608  
pkoury@siteselectiongroup.com