

Realty Trust

TRUST IS IN OUR NAME

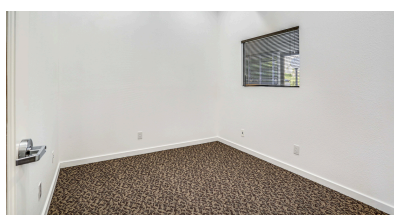
750 E TAHQUITZ CANYON  
WAY, EXECUTIVE SUITE 6

OFFICE SPACE  
AVAILABLE

FOR  
LEASE

SQUARE  
FEET

127



## ABOUT THE SPACE

Prestigious and professional Kaptur Plaza is walking distance to Downtown Palm Springs, Convention Center, restaurants, hotels, and shops. This executive suite is all-inclusive and has everything one may need throughout the course of their workday. A dedicated parking lot with ample space for tenants and clients. Professionally maintained award-winning complex designed by Mid-Century Architect, Hugh Kaptur!

## QUICK FACTS

- \$600 per month, No CAM fees
- All utilities included in rent
- Professional cleaning service of common areas
- Access to lobby, shared conference room, and kitchen
- Ample off-street parking
- Shared private restrooms
- Koffi Cafe conveniently located on the property
- Centered between downtown and PS airport

**GET IN TOUCH**  
WITH OUR LEASING TEAM

**760-327-8000**  
[www.realtytrustps.com](http://www.realtytrustps.com)

650 E Tahquitz Canyon Way, Suite 2  
Palm Springs, CA 92262

# Realty Trust

