

Anaheim Hills

155 North Riverview Drive, Anaheim Hills, CA 92808



PRIVATE OFFICES

Highly professional private offices for individuals and teams that are flexible and scaled for growth.

MEETING ROOMS

Spacious, well-appointed meeting rooms with on-site administrative support. Available for an hour, day or longer.

VIRTUAL OFFICES

Establish a business presence with mail handling, phone answering or meeting room time.

ABOUT THIS LOCATION

Prestigious Anaheim Hills, California! Nestled between Orange County and the Inland Empire near the intersection of the 91 Freeway and Imperial Highway (90) and convenient access to the Eastern Transportation Corridor (241), Anaheim Hills is a dream location. This class A three story location offers 63 interior and exterior offices with expansive views of Anaheim's Scenic Canyon Corridor and private balconies.

CONTACT US

Let's touch base! Contact the on-site General Manager at 714-769-9033 or ANAManager@premierworkspaces.com to schedule a tour.



Anaheim Hills

155 North Riverview Drive, Anaheim Hills, CA 92808



PREMIER AMENITIES

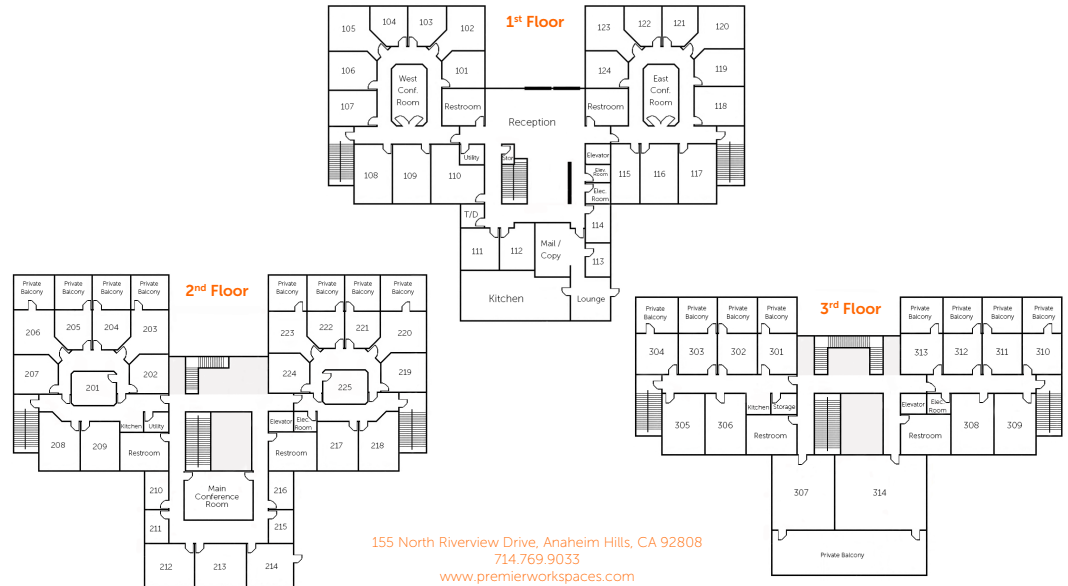
Our private suites can be easily customized to fit your desired aesthetic and brand.

- Private Offices
- Team Rooms
- High Speed Internet
- Telephone Answering
- Mail Collection
- Equipped Kitchen
- Day Offices
- Meeting Rooms
- Daily Janitorial
- Furnished or Unfurnished

PREMIER DIFFERENCE

We've been perfecting the professional workspace for over 17 years.

- Highly-Professional Atmosphere
- On-Site Manager & Support Staff
- Scalable Solutions for Individuals and Teams
- On-Site Billing
- 90+ Locations Nationwide



NEARBY AMENITIES

The Anaheim Hills Executive Suite is conveniently located off the 91 freeway at the Weir Canyon exit making it an easily accessible location with plenty of shops and dining nearby.

Nearby Amenities:

- Dining: BJs Bar and Grill, Islands, Panera, Chipotle, El Torito and many more
- Grocery: Ralphs, Pavillions
- Shops: Target, Costco, Staples
- Starbucks
- Edwards Theaters
- 24 Hour Fitness
- USPS Office

Nearby Transit:

- Freeways – 91 Fwy
- Bus – OCTA

CONTACT US

Let's touch base! Contact the on-site General Manager at 714-769-9033 or ANAmanager@premierworkspaces.com to schedule a tour.