

FOR SALE: +/- 4,818 SF RESTAURANT

102 SOUTH 2ND STREET

WILMINGTON, NEW HANOVER COUNTY, NORTH CAROLINA





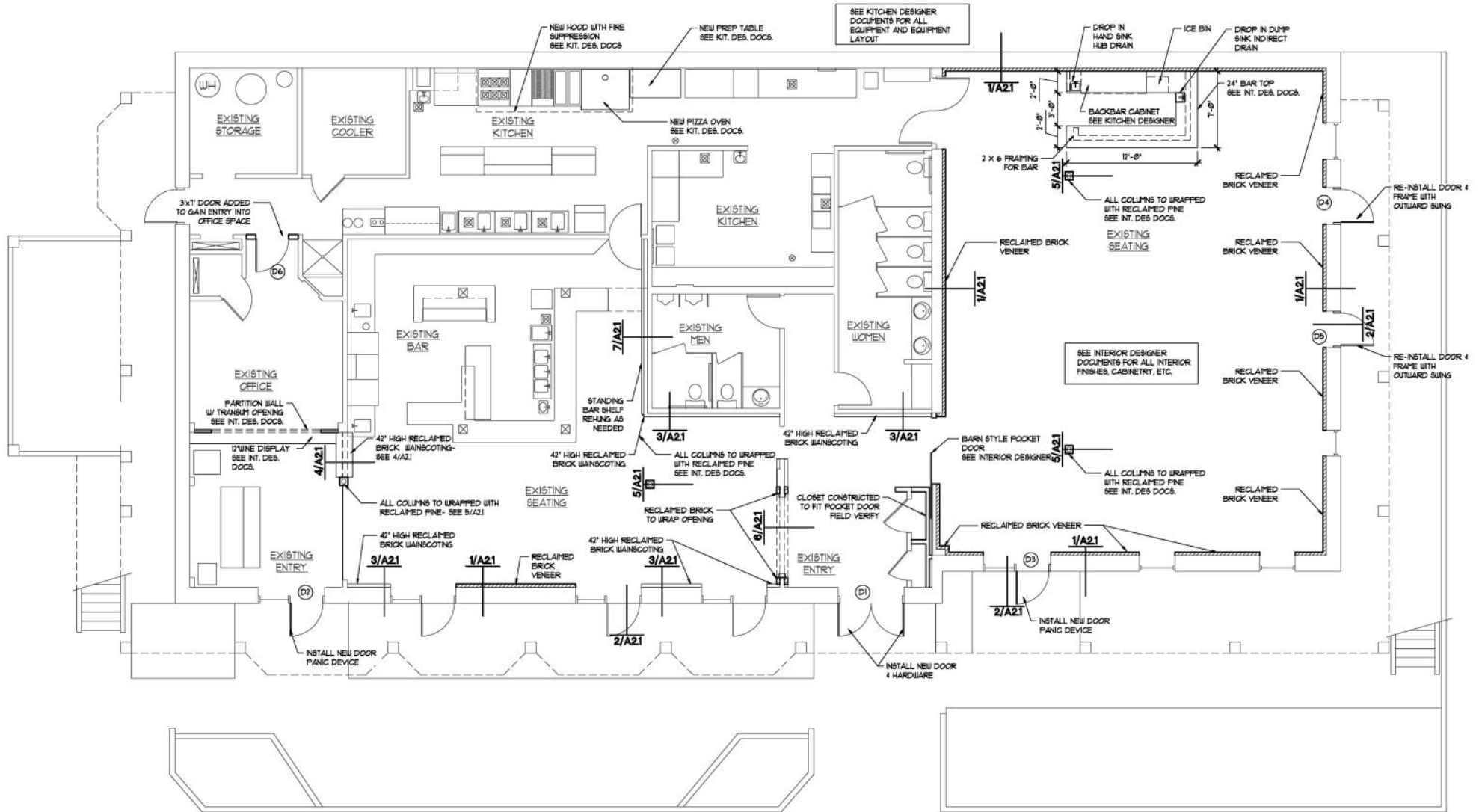
SUMMARY

Located on the vibrant corner of South 2nd Street and Dock Street, this 4,818 SF restaurant space has a long history of success. The current operator, Tarantelli's, is looking to relocate to a larger space.

This area of Downtown Wilmington has experienced tremendous growth in the last few years, making it the perfect location for a restaurant to thrive. Subject is located across the street from Dram Yard and the Arrive Hotel. A 55 room expansion and retail is planned on the adjacent parcel to the south.

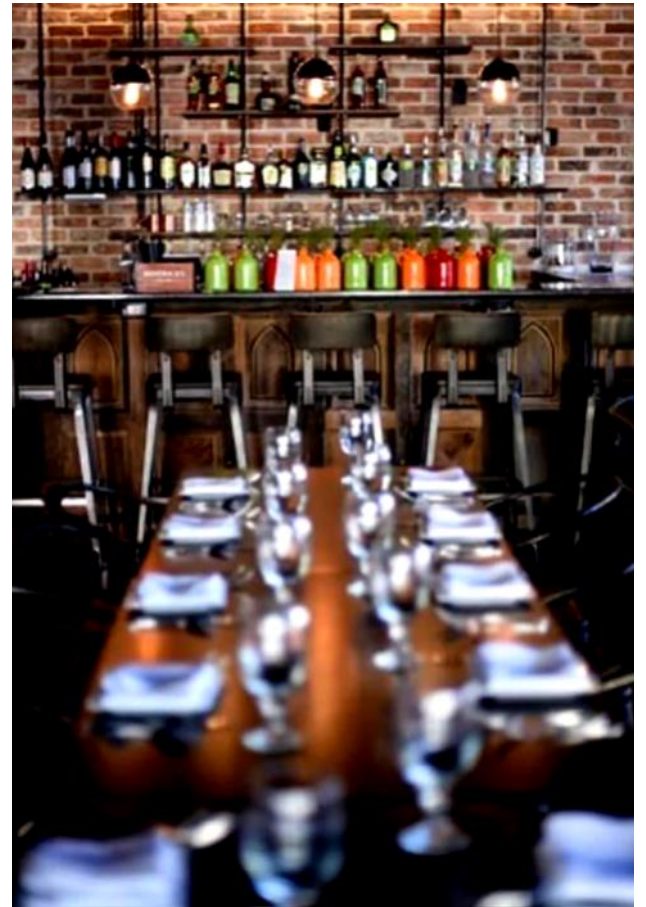
ADDRESS	102 South 2nd Street Wilmington, NC New Hanover County
SIZE	± 4,818 SF
CAPACITY	200 people
SALES PRICE	\$2,250,000
ZONING	CBD—Central Business District
NOTES	The property includes all front of house FF&E and kitchen equipment, 2 bars, and seating which can accommodate up to 200 people. Tarantelli's invested over \$1M in this space in order to make it the beautiful, well-designed restaurant it is today.

FLOOR PLAN



1/A11 NEW CONSTRUCTION - FLOOR PLAN
 PLAN#01 SCALE: 3/16" = 1'-0"

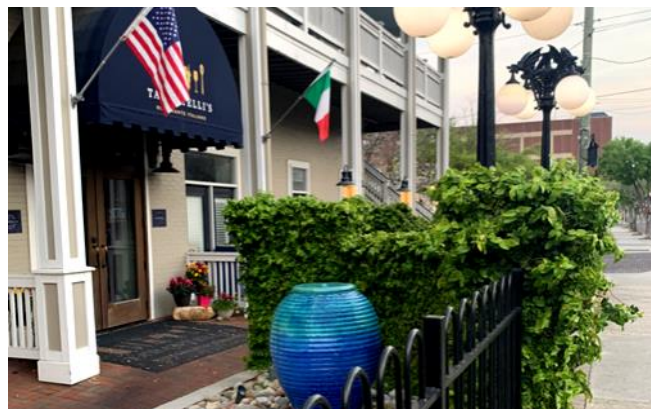
EXTERIOR PHOTOS



INTERIOR PHOTOS



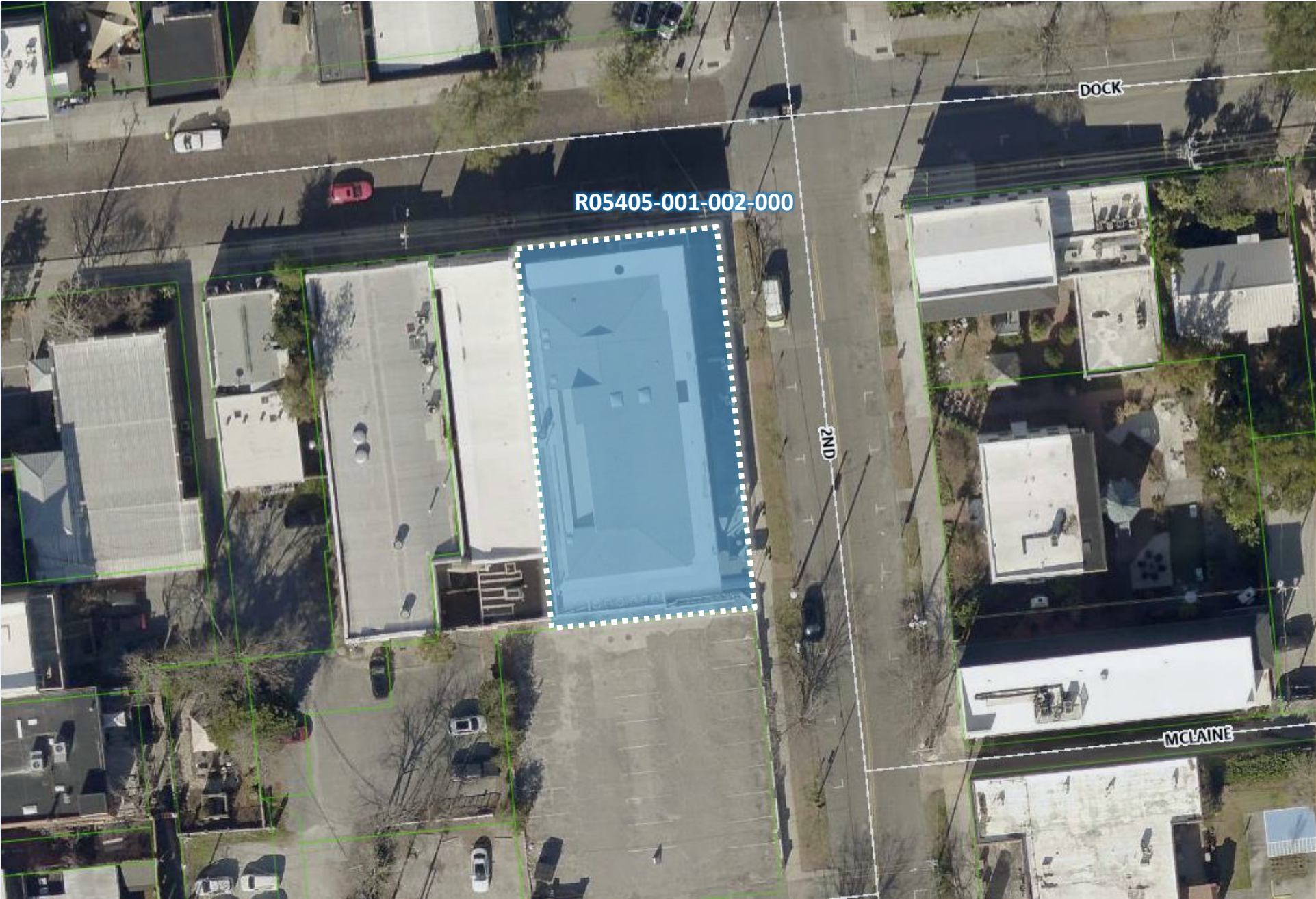
EXTERIOR PHOTOS



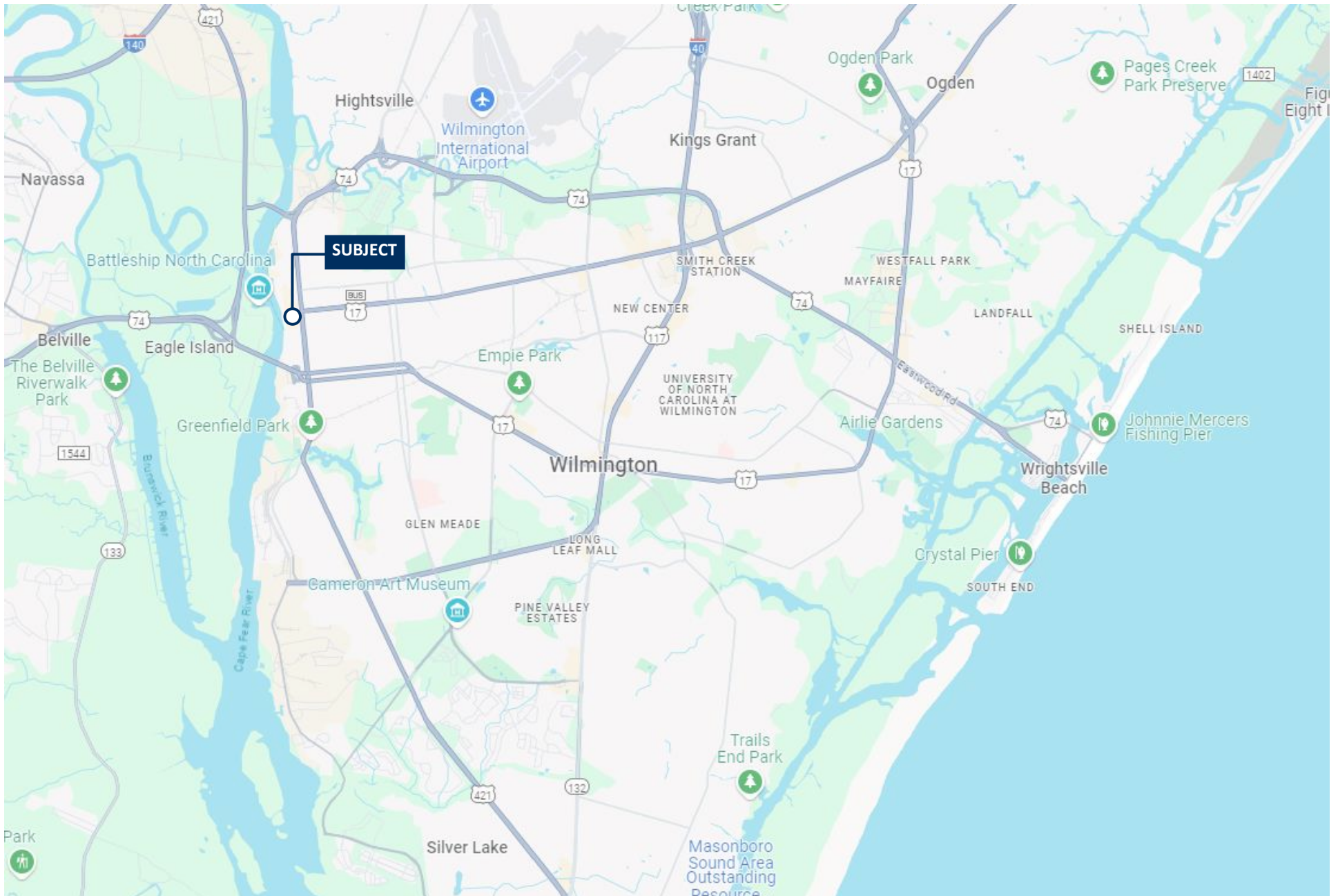
AERIAL MAP



GIS AERIAL



LOCATION MAP





PATRICK RILEY

Vice President

+ 1 910.344.1018 direct

patrick@capefearcommercial.com



102 Autumn Hall Drive | Suite 210 | Wilmington, NC 28403
capefearcommercial.com

© 2024 Cape Fear Commercial, LLC. All rights reserved. The information contained in the following Marketing Brochure is proprietary and strictly confidential. It is intended to be reviewed only by the party receiving it from Cape Fear Commercial and should not be made available to any other person or entity without the written consent of Cape Fear Commercial. This Marketing Brochure has been prepared to provide summary, unverified information to prospective purchasers, and to establish only a preliminary level of interest in the Subject property. The information contained herein is not a substitute for a thorough due diligence investigation. Cape Fear Commercial has not made any investigation, and makes no warranty or representation, with respect to the income or expenses for the Subject property, the future projected financial performance of the property, the size and square footage of the property and improvements, the presence or absence of contaminate substances, PCB's or asbestos, the compliance with State and Federal regulations, the physical condition of the improvements thereon, or the financial condition or the business prospects of any tenant's plans or intentions to continue its occupancy of the Subject property. The information contained in this Marketing Brochure has been obtained from sources we believe to be reliable; however, Cape Fear Commercial has not verified, and will not verify, any of the information contained herein, nor has Cape Fear Commercial conducted any investigation regarding these matters and makes no warranty or representation whatsoever regarding the accuracy or completeness of the Information provided. All potential buyers must take appropriate measures to verify all of the information set forth herein.