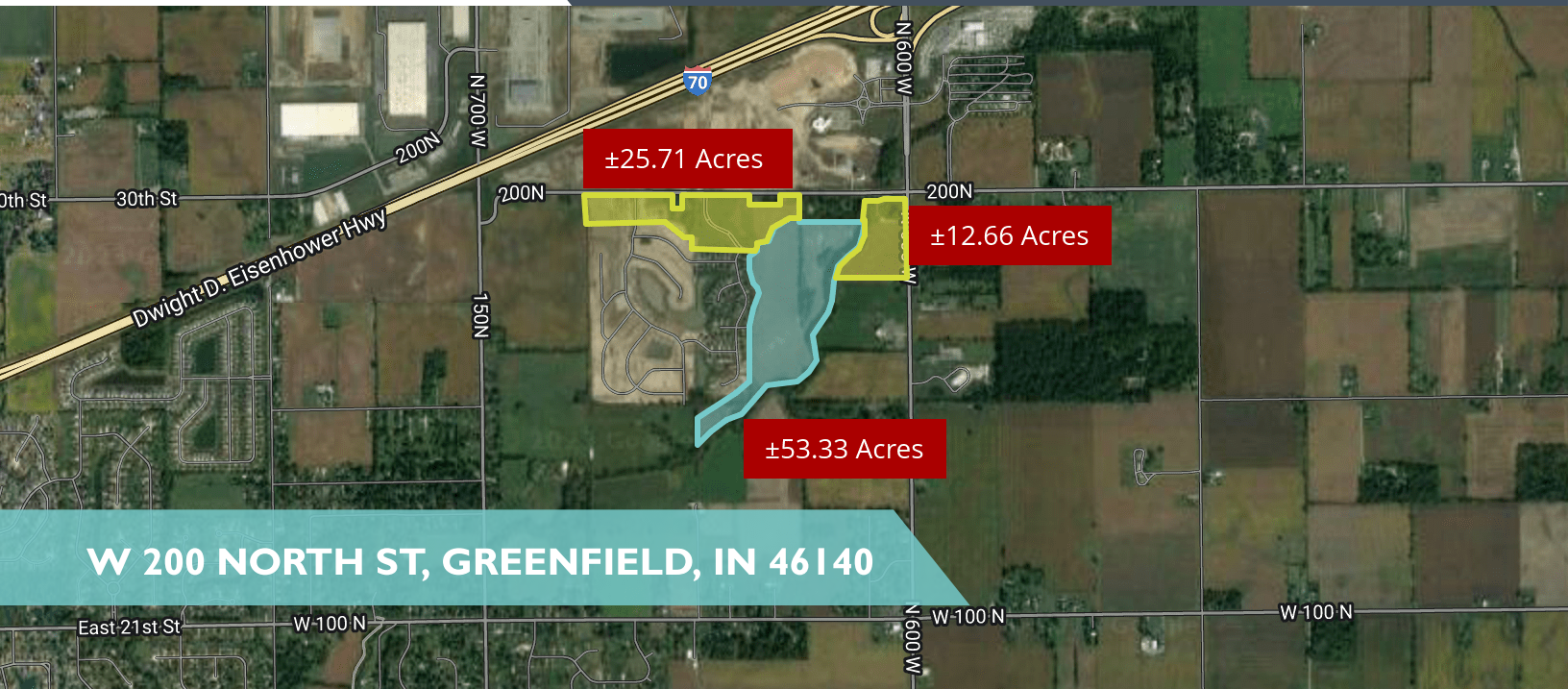


SALE



LAND

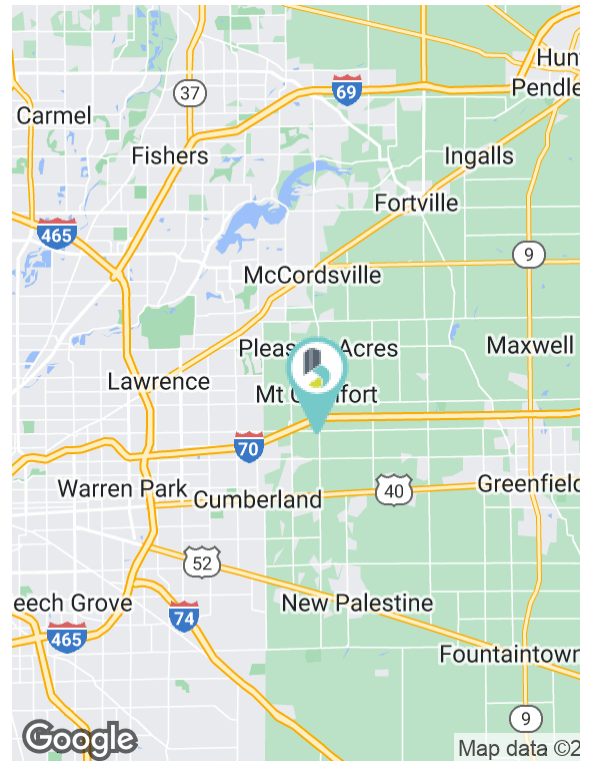
OVERSIZED FARMS



W 200 NORTH ST, GREENFIELD, IN 46140

PROPERTY HIGHLIGHTS

- Multifamily development site with immediate access to I-70
- Current zoning High Density Residential (R5)
- Adjacent to the new Hancock Regional Hospital
- Phenomenal visibility on high-traffic-count Mount Comfort Rd.
- Flexibility for various development types and suitable for a wide range of projects.
- Situated in a thriving area, this land listing capitalizes on the region's positive economic growth and increasing demand for commercial and residential properties.



<b>SALE PRICE</b>	<b>SUBJECT TO OFFER</b>
-------------------	-------------------------

Lot Size:	±53.33
-----------	--------



**BRADLEY COMPANY**  
 310 E. 96th St., Suite 100  
 Indianapolis, IN 46240  
 317.663.6000

**CASEY MCGANN**  
 Broker  
 317.352.6650  
 camcgann@bradleyco.com

**MICHAEL HERRIGAN, SIOR**  
 Senior Vice President | Director of Land Services  
 317.439.3452  
 mherrigan@bradleyco.com

**SAM KAROZOS**  
 Senior Broker  
 317.371.0128  
 skarozos@bradleyco.com



BRADLEYCO.COM



## W 200 NORTH , GREENFIELD, IN 46140

SALE

LAND



Map data ©2023 Google Imagery ©2023, Airbus, CNES / Airbus, IndianaMap Framework Data, Landsat / Copernicus, Maxar Technologies, USDA/FPAC/Geo

**CASEY MCGANN**  
 Broker  
 317.352.6650  
 camcgann@bradleyco.com

**MICHAEL HARRIGAN, SIOR**  
 Senior Vice President | Director of Land Services  
 317.439.3452  
 mharrigan@bradleyco.com

**SAM KAROZOS**  
 Senior Broker  
 317.371.0128  
 skarozos@bradleyco.com