

10.00 acres  
**Land available**

# Industrial Land Available

**5701 Park Avenue | Des Moines, Iowa 50321**



<b>Available</b>	10.00 acres
<b>Sale price</b>	\$6.00/PSF
<b>Zoning</b>	EX - EX Mixed Use
<b>Property information</b>	<ul style="list-style-type: none"> <li>• Outdoor storage available</li> <li>• Optimal access onto Park Avenue</li> <li>• Close-proximity to Interstate 235 and Des Moines Int'l Airport</li> </ul>

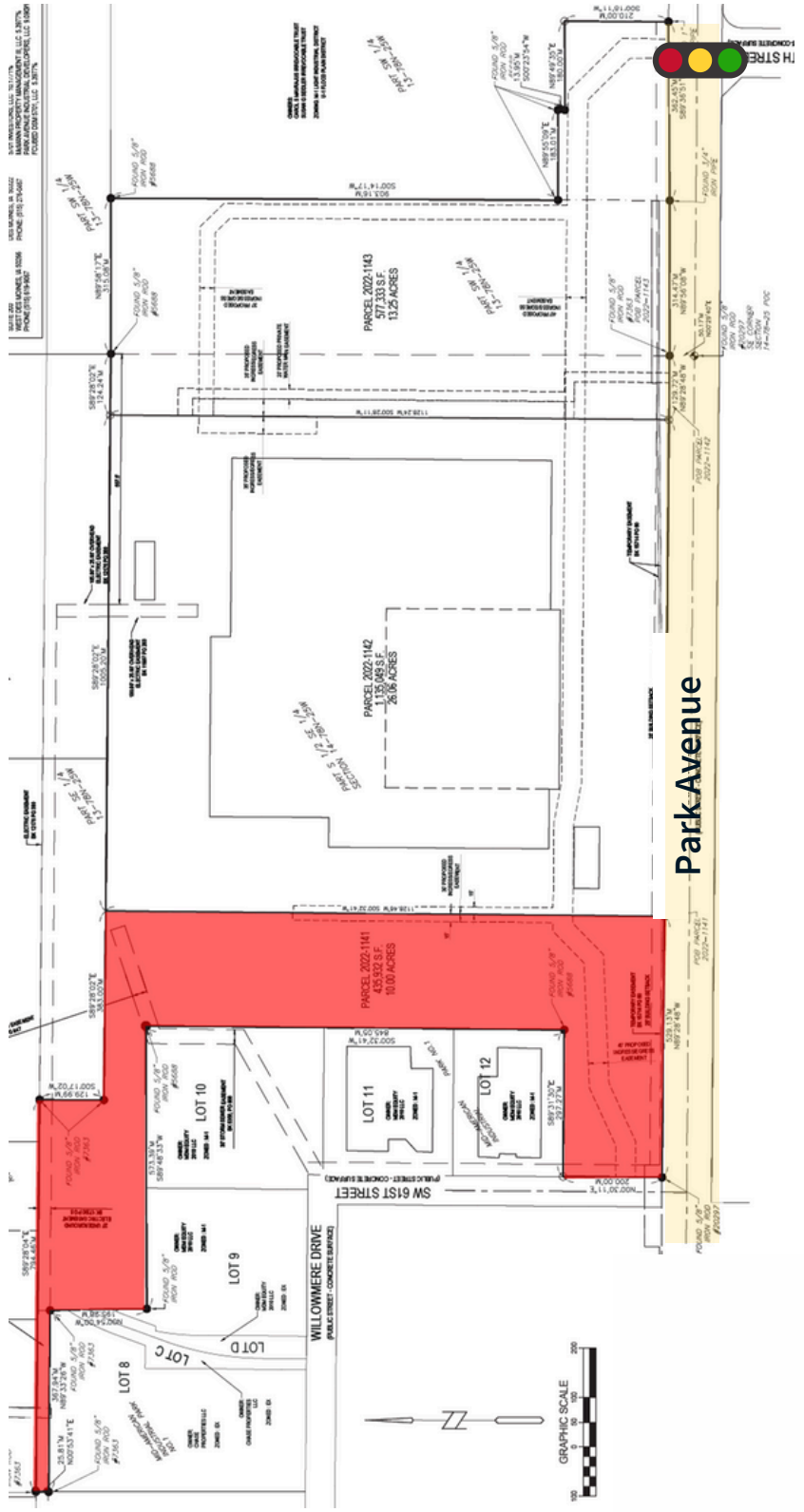


# Industrial land available for lease, sale, or build-to-suit

10 acres

Sale price: \$6.00/PSF

10.00 acres →





# Why Des Moines?



## Premier Submarket

Situated near off Park Avenue and Highway 28, the Subject Property falls within the Des Moines industrial market.

Proximity to the regional interstate network and access to a highly qualified and sustainable employment watershed make Des Moines a desirable industrial market, attracting the region’s most notable employers with the food, agriculture, advanced manufacturing, logistics and energy clusters.

## Des Moines MSA Rankings and Recognition

*“Greater Des Moines (DSM) is again the fastest-growing major Midwest metro in percentage of population grown, according to the 2020 estimates released by the U.S. Census Bureau.”*

**- Greater Des Moines Partnership**



Top Ten Place for Business and Careers (2019)



#4 Fastest Growing City in the US (2019)



Small Business Community of the Year (2019)



Best Community To Live in (2020)



One of Three "Breakout Cities on the Forefront of America's Economic Recovery" (2021)



Top 10 City to Live in After the Pandemic (2021)

## U.S. News & World Report

#1 State (2021)

## U.S. News & World Report

#7 Best Place to Live in the Country - DSM Metro (2021)

## U.S. News & World Report

#2 Safest City in Iowa – DSM Metro (2021)

## The Ascent

#1 Best Place to Live in the Midwest for High Salaries and Low Cost of Living – DSM Metro (2021)

## SafeHome.org

#4 Safest City in Iowa – Urbandale (2021)

## Niche

#5 Best Suburb for Millennials in Iowa (2021)

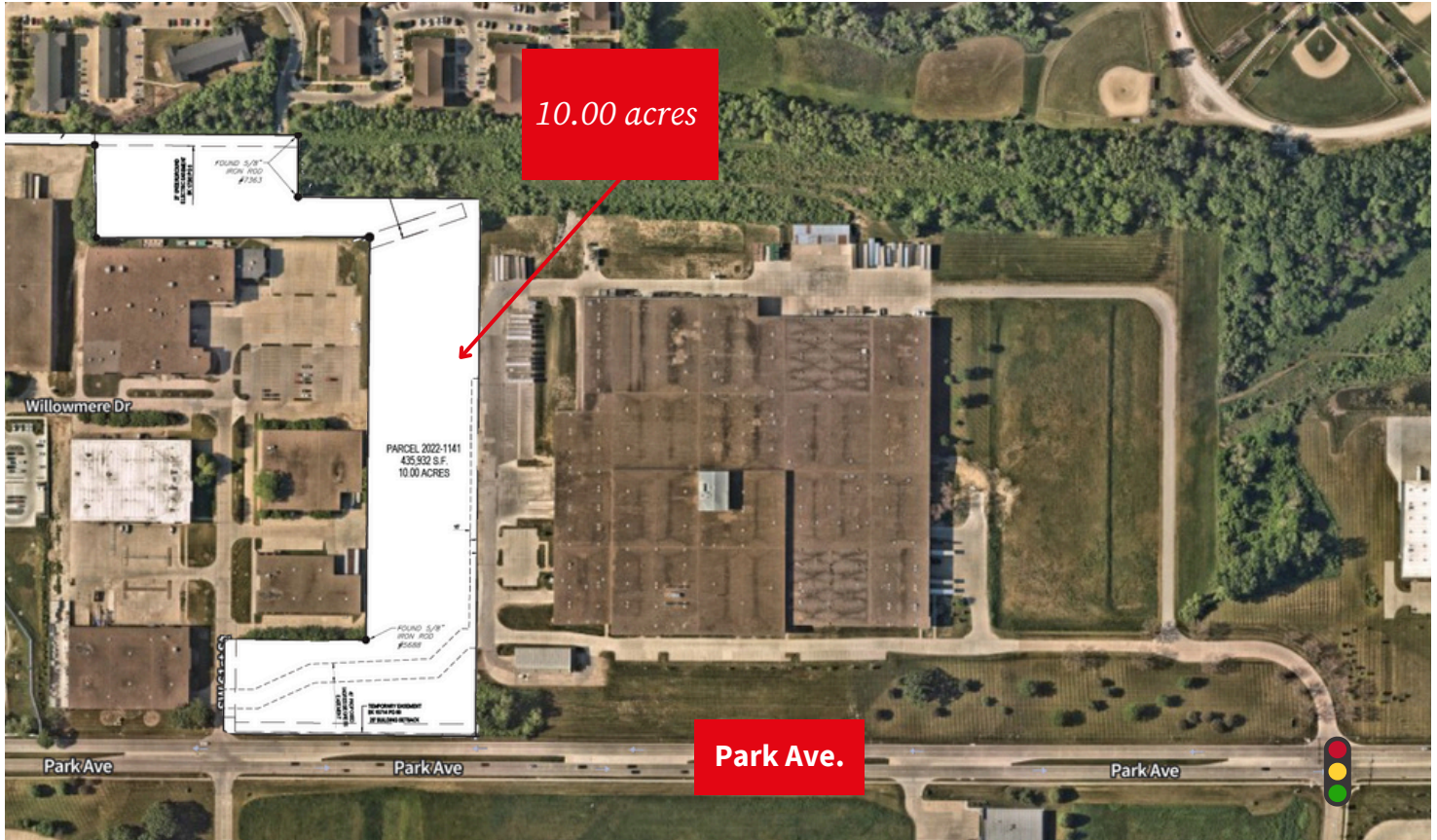
## Money Magazine

Top 50 Places to Live – Urbandale (2021)



# Industrial Land Available

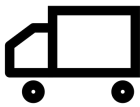
5701 Park Avenue | Des Moines, Iowa 50321



± 6.7 miles to I-35



± 11.5 miles to I-80



± 15 miles to FedEx freight facility



± 14.4 miles to UPS freight facility



± 15.8 miles to Ankeny Regional Airport



± 4.7 miles to Des Moines Int'l. Airport

## Contact

### Marcus R. Pitts, CCIM, SIOR

Senior Managing Director  
+1 515 556 4727  
marcus.pitts@jll.com

### Austin Hedstrom, SIOR

Executive Vice President  
+1 515 414 1767  
austin.hedstrom@jll.com

### Tanner Hedstrom

Vice President  
+1 515 745 2734  
tanner.hedstrom@jll.com

[jll.com/des-moines](http://jll.com/des-moines)