



Colliers



For SubLease

Office

Lease Rate:

\$22.95 psf

Full Service

Contact:

James Bullington

Senior Vice President

+1 801 836 2400

james.bullington@colliers.com

Colliers

2100 Pleasant Grove Blvd., Suite 200

Pleasant Grove, UT 84062

Main: +1 801 947 8300

colliers.com

1250 East 200 South Ste 3F
Lehi, Utah

Discovery Point II
Office Sublease

Building amenities

- Class A office
- Immediate access to I-15
- Close to an abundance of amenities
- Ample parking
- Master Lease term expires June 30,2023

Available: 4,575 SF

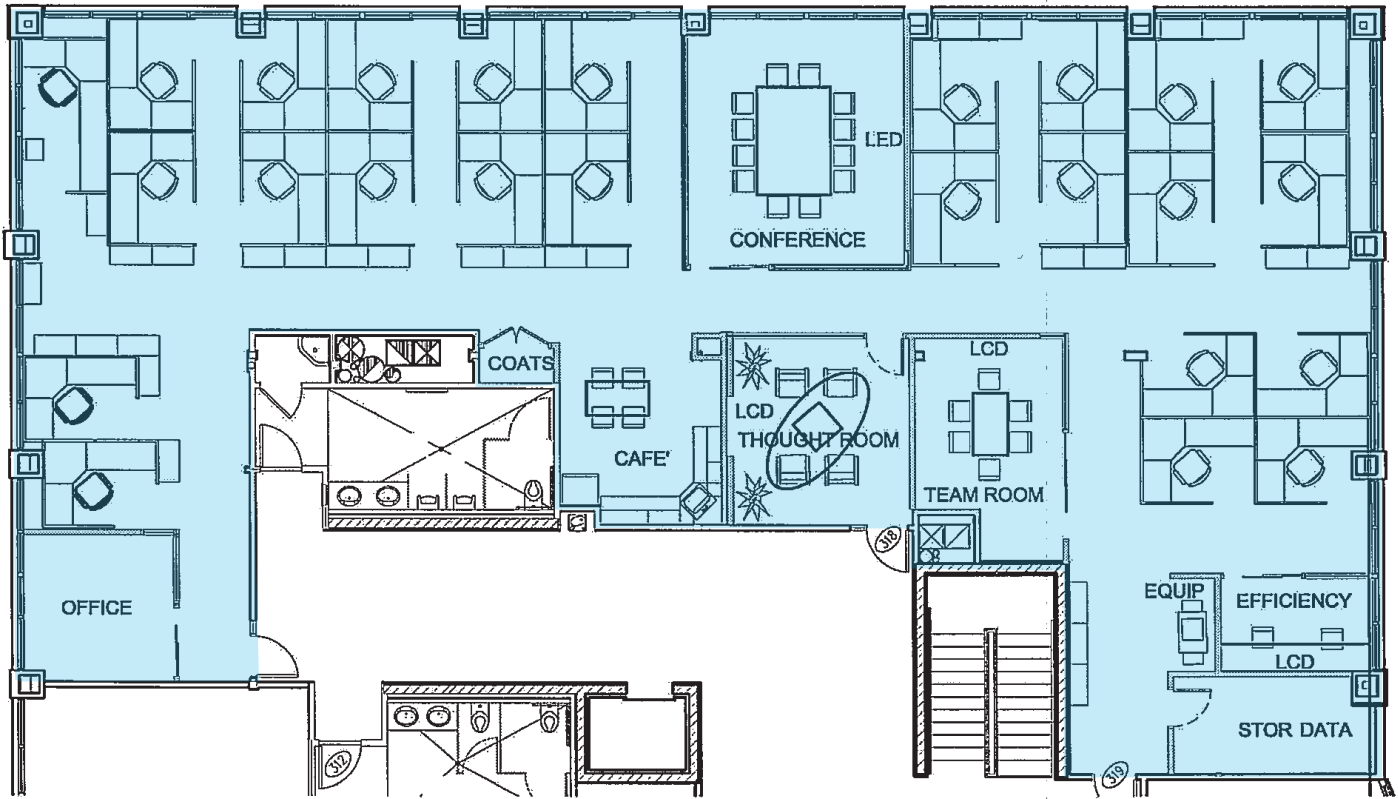
Lease Rate: \$22.95 psf | Full Service

Pictures



Floor Plan

Available Retail: 4,575 SF





James Bullington
 Senior Vice President
 +1 801 836 2400
james.bullington@colliers.com

Colliers
 2100 Pleasant Grove Blvd., Suite 200
 Pleasant Grove, UT 84062
 Main: +1 801 947 8300
colliers.com

This document has been prepared by Colliers International for advertising and general information only. Colliers International makes no guarantees, representations or warranties of any kind, expressed or implied, regarding the information including, but not limited to, warranties of content, accuracy and reliability. Any interested party should undertake their own inquiries as to the accuracy of the information. Colliers International excludes unequivocally all inferred or implied terms, conditions and warranties arising out of this document and excludes all liability for loss and damages arising there from. This publication is the copyrighted property of Colliers International and/or its licensor(s). ©2021. All rights reserved.