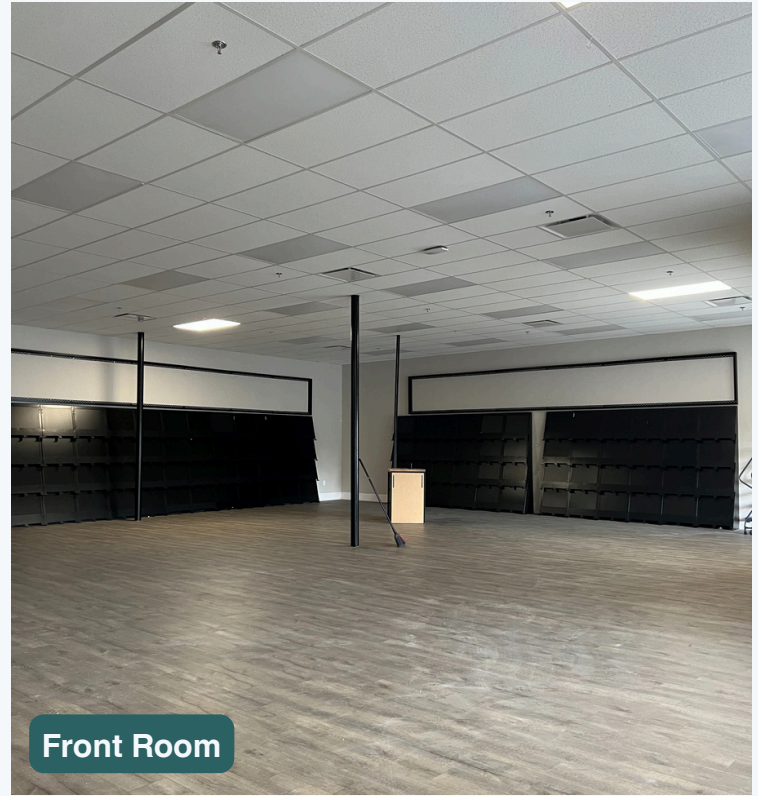


SENTINEL FUND.

Retail Space For Lease Promenade Shopping Center

2510 Cobb Parkway SE Smyrna, GA 30080



Front Room



Back Room

**FOR
LEASE**

SIZE
11,288 SF

BASE RENT
\$25 PSF

Marilyn Waldrop
Leasing@Sentinelfundcre.com
407-271-8016

SENTINEL FUND.

Retail Space For Lease Promenade Shopping Center

2510 Cobb Parkway SE Smyrna, GA 30080



Supplemental Information

- HVAC Tonnage: 15 Ton Unit, 7.5 Ton Unit, 5 Ton Unit
- Ceiling Height is 12' in the Front Room
- Ceiling Height is 13'5" in the Back Room
- Approximate Length and Width of Front Room: 69'8" x 52'3"
- Approximate Length and Width of Back Room 158'4" x 71'8"

**FOR
LEASE**

SIZE
11,288 SF

BASE RENT
\$25 PSF

Marilyn Waldrop
Leasing@Sentinelfundcre.com
407-271-8016