



EVOLVE AT PARKWAY
300 UNITS

COMING SOON

Walmart
Save money. Live better.

PARKWAY COMMONS
30,000 SF SHOPPING CENTER

CONCORD PARKWAY

ZAXBY'S
TACO BELL
Waffle House

MAVIS
DISCOUNT
TIRE

Walgreens

1
1.36 AC

2
1.12 AC

3
1.12 AC

4
1.23 AC

PITTS SCHOOL RD

100 PITTS SCHOOL RD SW, CONCORD, NC

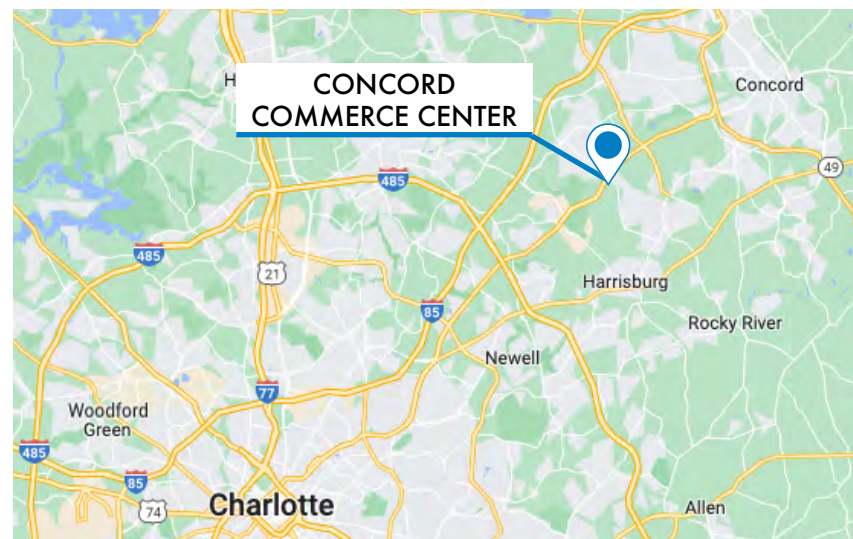
CONCORD COMMERCE CENTER

MULTIPLE OUTPARCELS AVAILABLE



PROPERTY INFORMATION

- Concord Commerce Center is a premier 740,140 SF Class A Industrial Park that is currently under construction and features four commercial outparcels available fronting Pitts School Rd
- The outparcels range from 1.12 - 1.36 AC and are zoned C-2
- Great access with a new lighted intersection being constructed at the entrance on Pitts School Rd and cross access to Parkway Commons in two locations
- Located adjacent to Parkway Commons with several national tenants including Walmart, Walgreens, Zaxby's, Taco Bell, Subway, and Papa John's
- The property is located approximately 2 miles from Charlotte Motor Speedway
- Minutes away from I-85, Concord Mills, and JM Robinson High School
- Anticipated delivery June 2025
- Call for Pricing



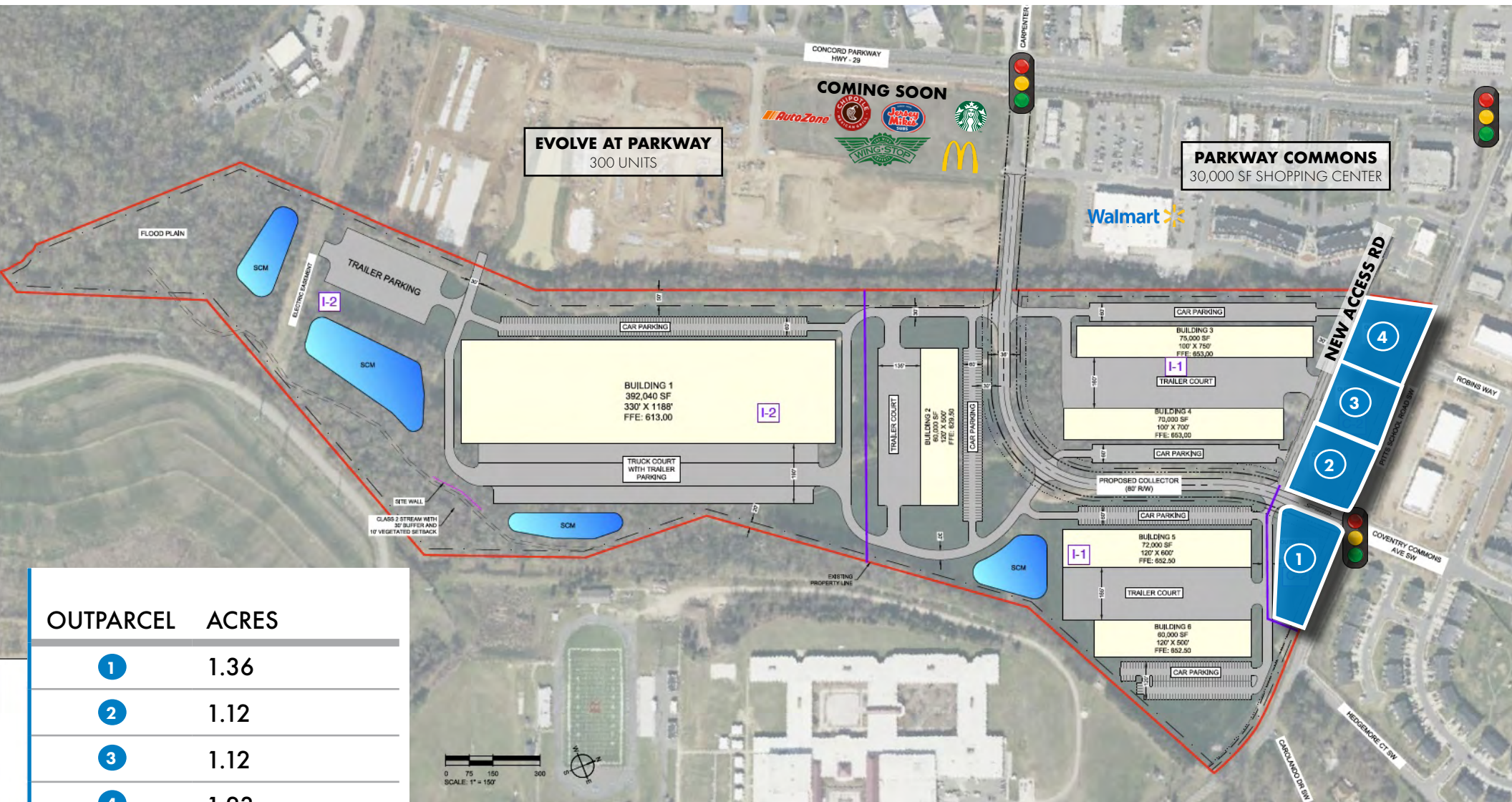
MARSHALL RANSON
704.654.2344
marshall@ascent.re

DAVIS HAHN
704.534.0116
davis@ascent.re



SITE PLAN

CONCORD COMMERCE CENTER MULTIPLE OUTPARCELS AVAILABLE



OUTPARCEL ACRES

| | |
|---|------|
| 1 | 1.36 |
| 2 | 1.12 |
| 3 | 1.12 |
| 4 | 1.23 |

MARSHALL RANSON
704.654.2344
marshall@ascent.re

DAVIS HAHN
704.534.0116
davis@ascent.re

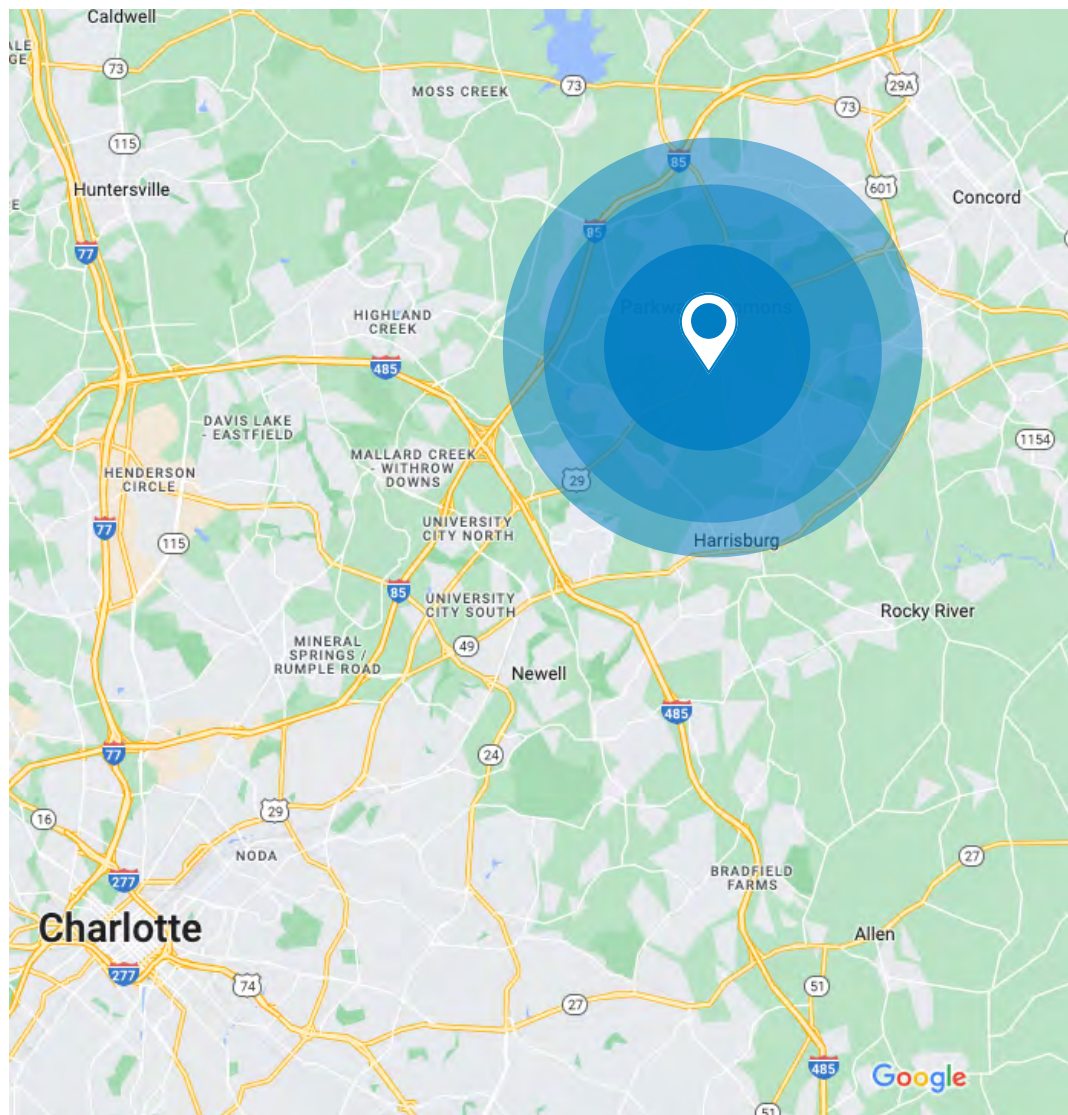


MARSHALL RANSON
704.654.2344
marshall@ascent.re

DAVIS HAHN
704.534.0116
davis@ascent.re



DEMOGRAPHICS



CONCORD COMMERCE CENTER MULTIPLE OUTPARCELS AVAILABLE

AMENITIES LIST / DEMOGRAPHICS

| | 1 MILE | 5 MILES | 10 MILES |
|-------------------|-----------|-----------|-----------|
| Population | 4,986 | 121,776 | 456,621 |
| Median Age | 34.6 | 35.7 | 36.2 |
| Total Households | 1,758 | 45,428 | 169,508 |
| Household Income | \$104,472 | \$100,665 | \$93,410 |
| Median Home Value | \$261,979 | \$294,374 | \$276,864 |



MARSHALL RANSON
704.654.2344
marshall@ascent.re

DAVIS HAHN
704.534.0116
davis@ascent.re



