

FOR LEASE

15,913 SF SINGLE TENANT OFFICE BUILDING

2525 WEST BERYL AVENUE

Phoenix, Arizona 85021



Ross Peterson

M (480) 228-5206

O (480) 914-0939

ross.peterson@orionprop.com

Judi Butterworth

M (602) 315-2541

O (480) 773-4195

judi.butterworth@orionprop.com

PROPERTY HIGHLIGHTS

- » Courtyard, plentiful windows, new HVAC, loading dock, racquetball court in the basement.
- » Industrial development *Formation Park 17* is located directly adjacent to the south and under construction
- » Easy access to the entire Valley from Peoria Avenue and I-17
- » Within walking distance to the new light rail extension connecting the trade area to downtown Phoenix
- » Existing furnishings available

Building RBA: 15,913 SF

Lease Type: Modified Gross

Tenancy: Single

Parking: 32 Covered
32 Surface

Year Built: 1979

Parcel/APN: 149-09-001k

Zoning: A-1

Extra Amentity: Racquetball Court in Basement

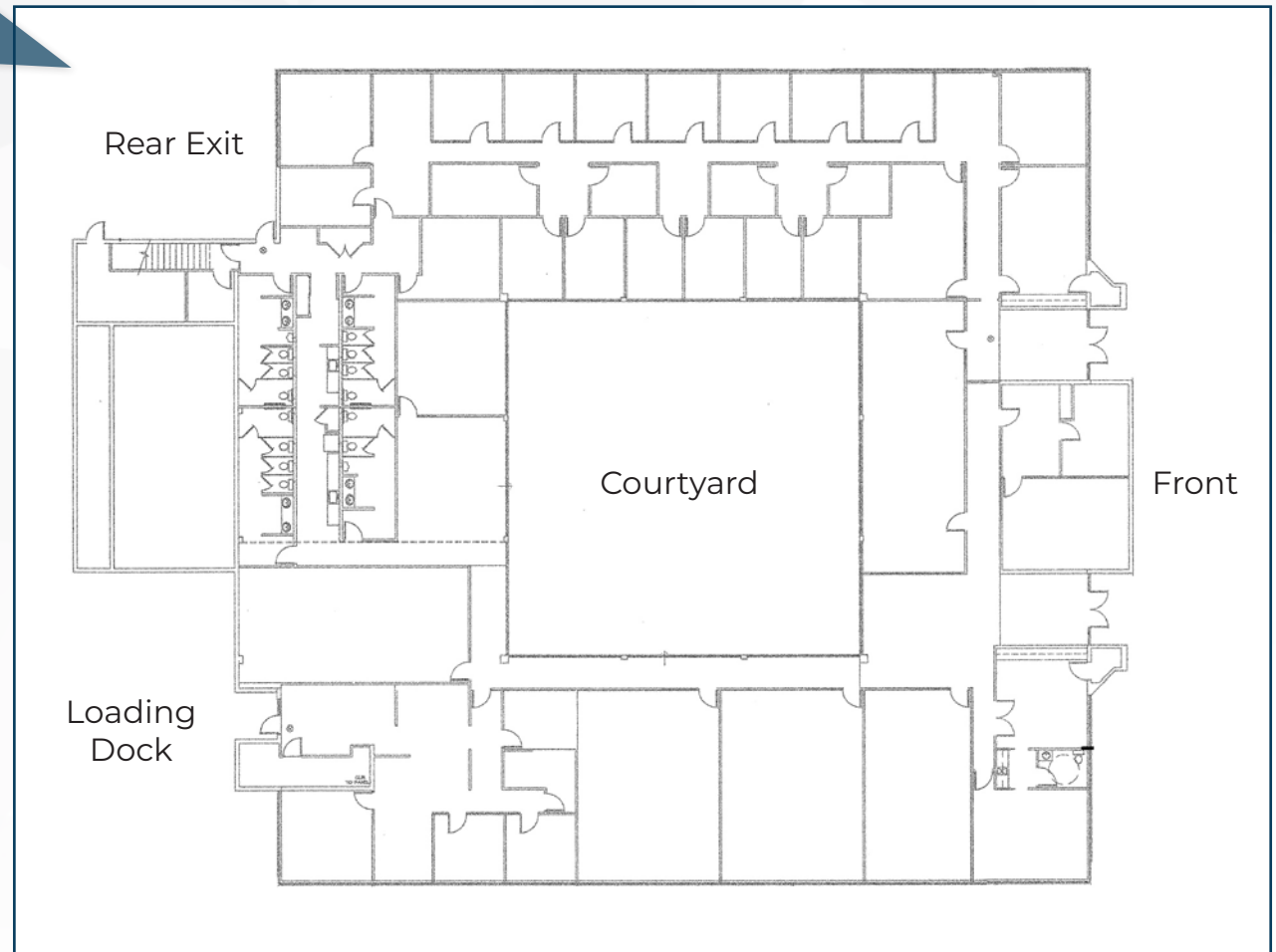




2525 W BERYL AVE

Phoenix, Arizona 85021

± 15,913 SF
AVAILABLE



INTERIOR PHOTOS



NEW DEVELOPMENTS



ADDITIONAL SHOTS

