

LAND FOR SALE **+5,000 SF Warehouse on +3.47 AC**



5034 SPENCER HIGHWAY | PASADENA, TX 77505

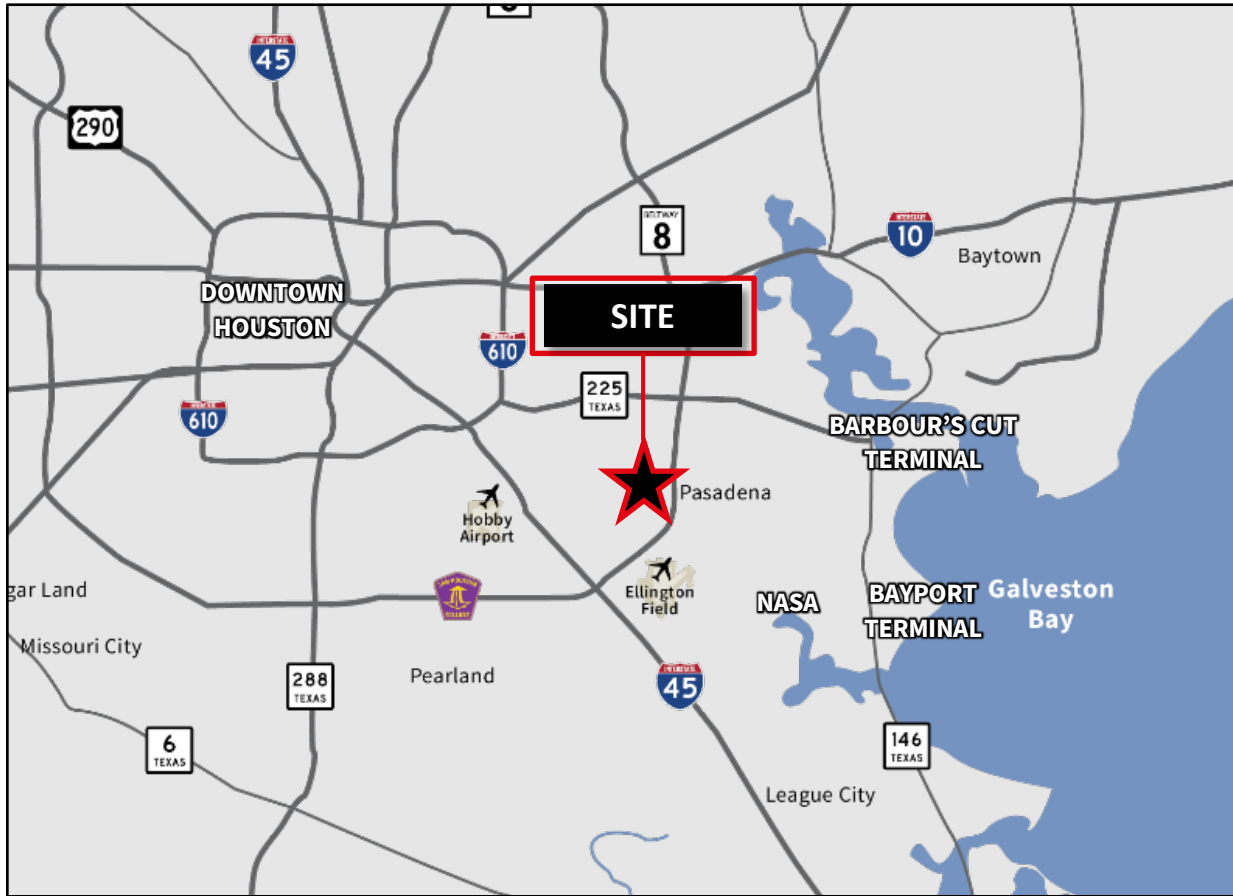


Travis Smith
Senior Vice President
+1 713 212 6517
travis.smith@jll.com

Karina Weathers
Associate
+1 713 212 6702
karina.weathers@jll.com

AREA LOCATION

±3.47 AC | 5034 SPENCER HWY | PASADENA, TX 77505  2



Location

Located on hard corner of Spencer Hwy and Daisy St.

Size

±3.47 Acres

Site Information

- Hard corner of Spencer Hwy and Daisy St
- On the designated truck route in Pasadena
- ±5,000 SF Warehouse with updated interior
- Utilities from City of Pasadena
- ±220 Ft. Frontage on Spencer Hwy
- Access from Spencer Hwy and Daisy St
- Less than 0.7 Miles to Sam Houston Pkwy

Price

\$2,300,000



Demographics

Population Summary	1-Mile	3-Mile	5-Mile
2022 Population	10,206	132,999	264,800
2022 Median Age	37.2	33.0	32.5
Average Household Income	\$80,446	\$80,023	\$83,884
Average Home Value	\$299,306	\$228,439	\$231,092
Educational Attainment –College Degree or Higher	14.7%	16.3%	17%



Drive Times

Destination	Minutes
Barbour's Cut Container Terminal	10
Bay Oaks Country Club	10
NASA Johnson Space Center	12
William P. Hobby Airport	15
Baybrook Mall	15
Downtown Houston	20

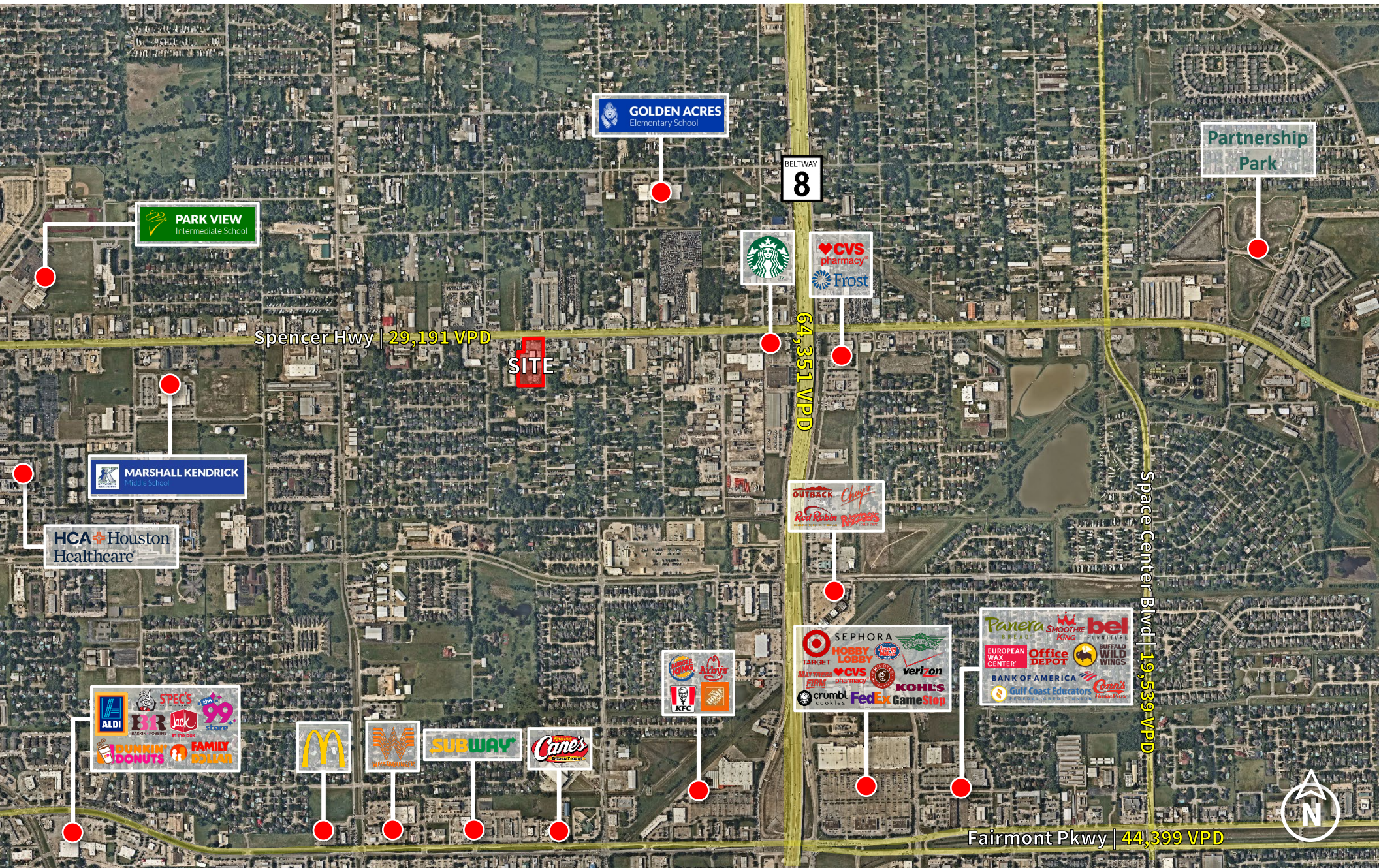
SITE DIMENSIONS

+3.47 AC | 5034 SPENCER HWY | PASADENA, TX 77505  3



PROPERTY AERIAL

+3.47 AC | 5034 SPENCER HWY | PASADENA, TX 77505  4



PROPERTY PICTURES

+3.47 AC | 5034 SPENCER HWY | PASADENA, TX 77505  **5**



Although information has been obtained from sources deemed reliable, JLL does not make any guarantees, warranties or representations, express or implied, as to the completeness or accuracy as to the information contained herein. Any projections, opinions, assumptions or estimates used are for example only. There may be differences between projected and actual results, and those differences may be material. JLL does not accept any liability for any loss or damage suffered by any party resulting from reliance on this information. If the recipient of this information has signed a confidentiality agreement with JLL regarding this matter, this information is subject to the terms of that agreement. ©2023 Jones Lang LaSalle IP, Inc. All rights reserved.