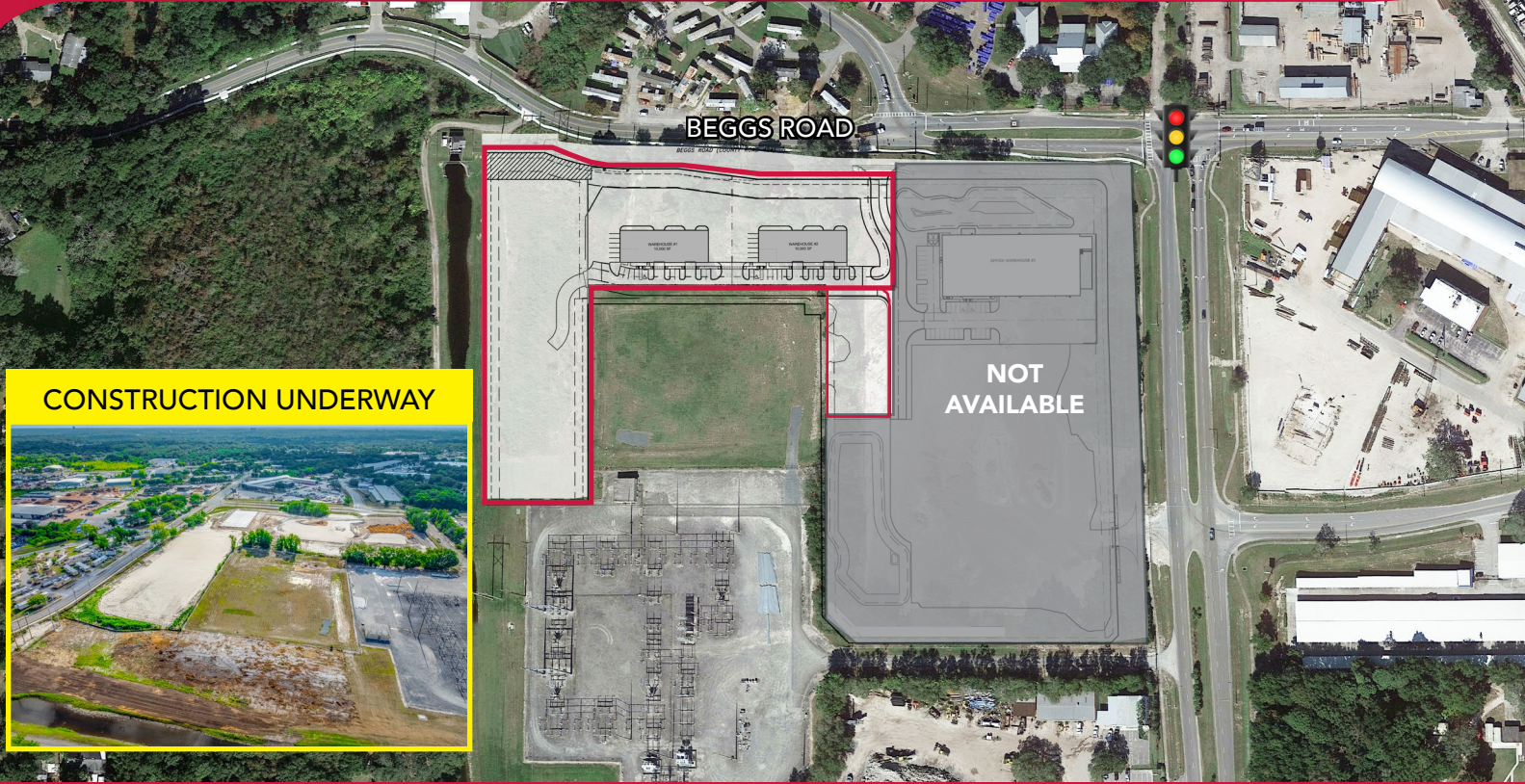


FOR LEASE BEGGS ROAD INDUSTRIAL PARK BUILD TO SUIT INDUSTRIAL OUTSIDE STORAGE SITES

6106 BEGGS ROAD, ORLANDO, FL 32810



PROPERTY HIGHLIGHTS

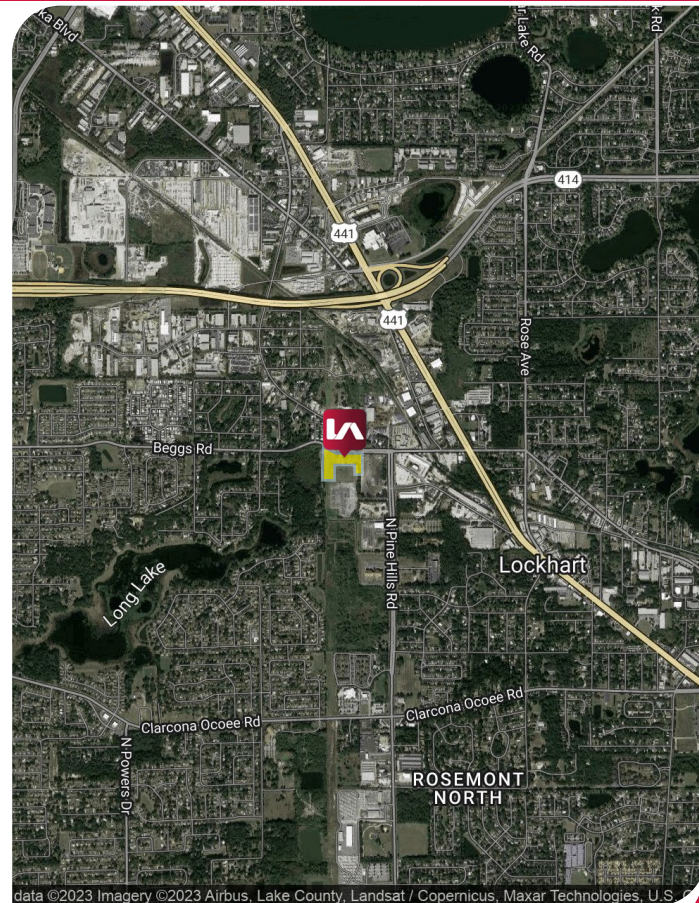
- Improvements to Suit
- Up to ±6.65 Acres
- Zoned Ind-4 (Orange County)
- Park is located at a signalized intersection
- Ideal for equipment rental, outdoor storage, contractors yards, and heavy industrial users
- Permitted plans for two 10,000 SF warehouse buildings on 1.37 and 1.56 Acres. Buildings will feature 3-phase power
 - Site plan and buildings can be modified to suit by developer
 - Site can accommodate up to 30,000 SF with additional outdoor storage
 - Variable site sizes from ±0.78, 1.37, 1.56, to 6.65 total acres

Lease Rate: **Yard Only** - \$5,500/AC per Month NNN
(Graded, Stabilized, Lit and Fenced)

Buildings - Please inquire for a Build-to-Suit Proposal

Leasing Contact:

Derek Riggelman, SIOR
Senior Vice President | Principal
driggelman@lee-associates.com
D 321.281.8507



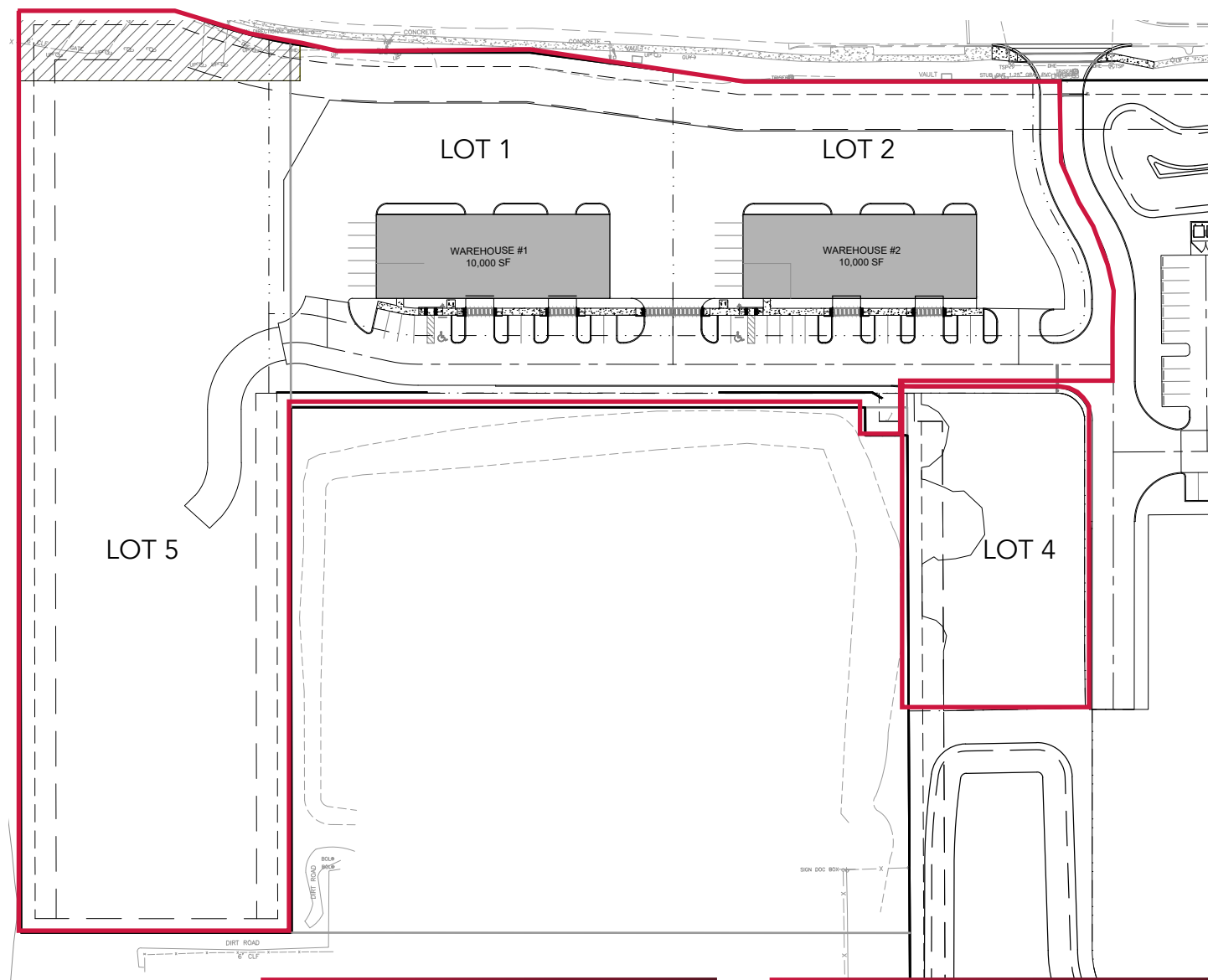
data ©2023 Imagery ©2023 Airbus, Lake County, Landsat / Copernicus, Maxar Technologies, U.S. G

6106 BEGGS ROAD

ORLANDO, FL 32810



CONCEPT PLAN - BUILD TO SUIT AVAILABLE



Leasing Contact:

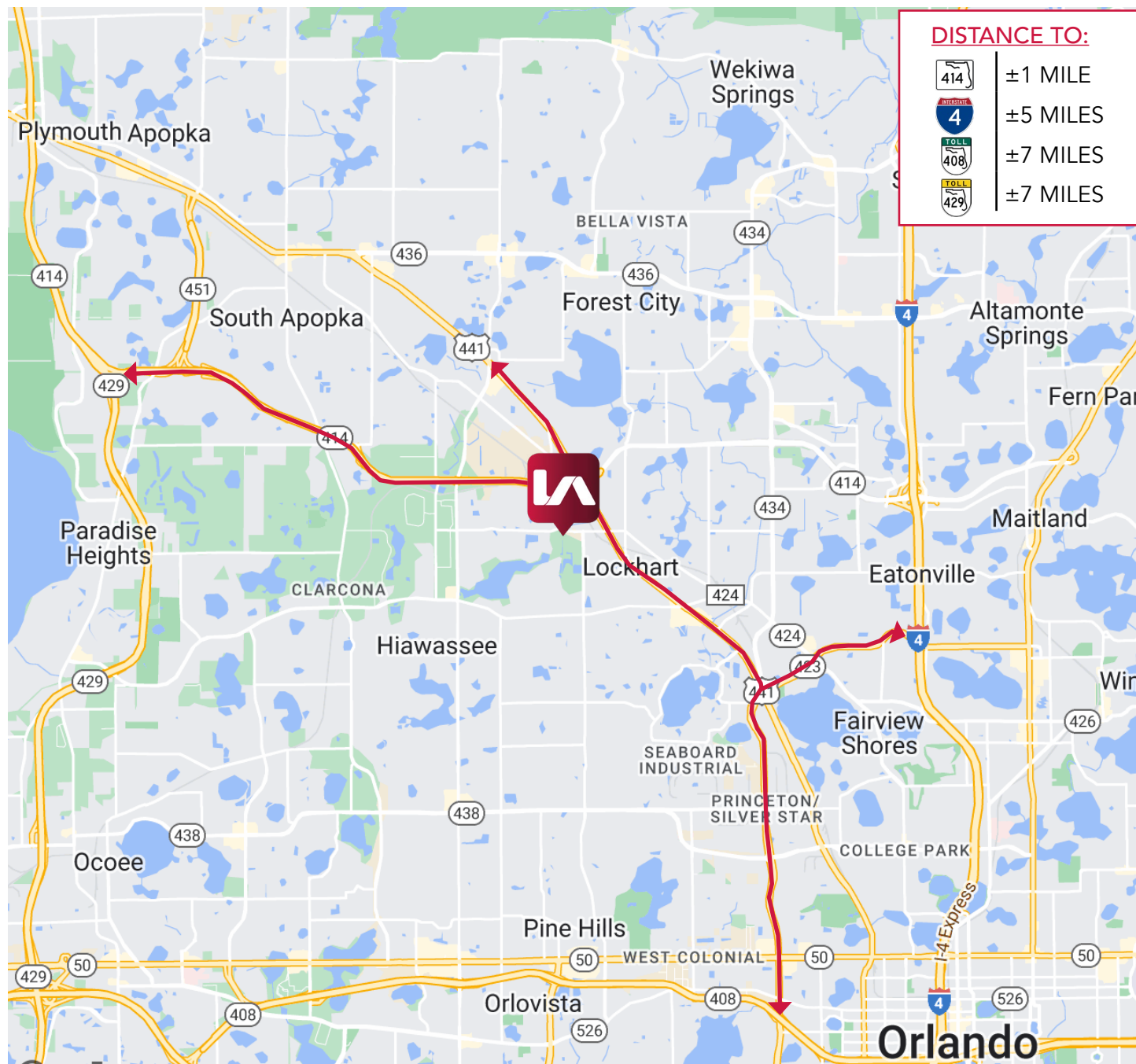
Derek Riggleman, SIOR
Senior Vice President | Principal
driggleman@lee-associates.com
D 321.281.8507

6106 BEGGS ROAD

ORLANDO, FL 32810



LOCATION



Leasing Contact:

Derek Riggleman, SIOR
Senior Vice President | Principal
driggleman@lee-associates.com
D 321.281.8507