



**STARBOARD CRE**  
LOCAL • INDEPENDENT • ENTREPRENEURIAL

**For Lease**

**333 Gellert Blvd**

Daly City, CA 94015

Perfect Peninsula Office Building  
+/-61,557 SF

**Frank Vella**  
650.464.8062



STARBOARDCRE.COM  
49 POWELL STREET, SAN FRANCISCO, CA 94102

<b>Building:</b>	333 Gellert Blvd, Daly City
<b>Size:</b>	± 61,557 SF
<b>Year Built:</b>	1977
<b>Zoning:</b>	C2
<b>Term:</b>	3-5 Years
<b>Property Type:</b>	office space

## Highlights

- Strategically located close to Highway 280, BART, and SamTrans
- General office Space. Great for attorney, tech or various other office uses.
- Medical use allowed
- Beautifully landscaped atrium
- Tenant conference room
- 1,000 to 3,000 Sq. ft. suites available

# AVAILABLE SPACES

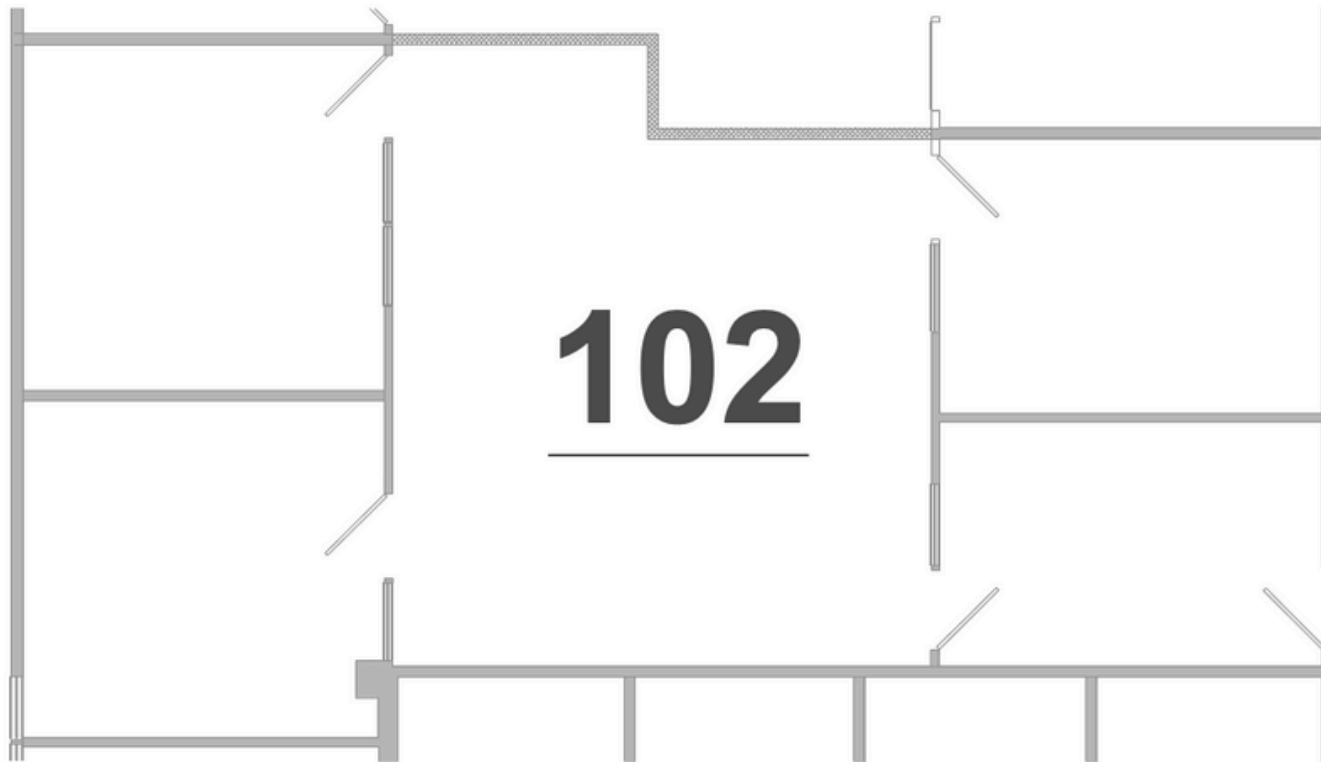
For Lease

Floors	Suite	Use	SF Available	Available	Rent	Term
1st	100	Office	1,542 SF	To Be Demised: 672 + 870 unless interested party but can show	\$2.85/MG	3 - 5 Years
1st	102	Office	1,257 SF	To Be Demised: 652 + 610 unless interested party but can show	\$2.85/MG	3 - 5 Years
1st	121	Office	1,560 SF	Available Now	\$2.85/MG	3 - 5 Years
2nd	249	Office	2,799 SF	To Be Demised: 1,142 + 1,667 unless interested party but can show but can keep whole of a tenant needs to the space	\$2.85/MG	3 - 5 Years
2nd	225	Office	2582 SF	Current dentist Suite+ Equipment available	\$2.85/MG	3-5 Years

This information has been secured by Starboard CRE from sources believed to be reliable. It is not guaranteed and should be verified before closing any transaction.

# FLOOR PLAN – SUITE 102

For Lease



This information has been secured by Starboard CRE from sources believed to be reliable. It is not guaranteed and should be verified before closing any transaction.

**STARBOARD CRE**  
LOCAL • INDEPENDENT • ENTREPRENEURIAL



# 5TH FLOOR | IMAGES

For Lease



This information has been secured by Starboard CRE from sources believed to be reliable. It is not guaranteed and should be verified before closing any transaction.



## Frank Vella

Broker Associate

[frank@starboardcre.com](mailto:frank@starboardcre.com)

CELL: 650.464.8062

DRE # 01104977

Call

View Profile





**STARBOARD CRE**  
LOCAL • INDEPENDENT • ENTREPRENEURIAL

STARBOARDCRE.COM  
OFC. PHONE 415.765.6900  
49 POWELL STREET, SAN FRANCISCO, CA 94102



**Unique Vision**  
We see what others miss

**Local Market Leader**  
No one knows Northern  
California like we do

**Full-Service Firm**  
We do it all

Locally based, and technology-forward, our brokers are highly qualified experts backed by a full-service, in-house support team who understand the intricacies of San Francisco real estate. Starboard CRE brings decades of brokerage experience representing over 600 million square feet of space with an aggregate lease value of over 10 billion and investments sold over 3 billion.

**CA DRE# 01103056**

**TCN**  
WORLDWIDE  
REAL ESTATE SERVICES

**AREA**  
ASSOCIATED REALTY OF THE AMERICAS