

OFFICE/WAREHOUSE FOR LEASE

170 E CORPORATE PLACE • CHANDLER, AZ



LEASE RATE: \$1.35 GRS

BUILDING FEATURES:

- **Building Size:** ±13,120 SF
- **Office Area:** ±1,740 SF
- **Zoning:** I-1, City of Chandler
- **Clear Height:** 16'
- **Power:** 1,200A, 120/208V, 3P
- **Loading:** 2 Grade Level Doors
(1) 12'x14' & (1) 14'x14'
- **Parking:** 17 Spaces Outside Yard



The information contained herein has been obtained from various sources. We have no reason to doubt its accuracy; however, J & J Commercial Properties, Inc. has not verified such information and makes no guarantee, warranty or representation about such information. The prospective buyer or lessee should independently verify all dimensions, specifications, floor plans, and all information prior to the lease or purchase of the property. All offerings are subject to price change, prior sale, lease, or withdrawal from the market without prior notice. Effective: 11 05 25

CONTACTS

John Masciandaro
D 480.214.1113 • M 602.432.9851
jmasciandaro@cpiaz.com



COMMERCIAL PROPERTIES INC.

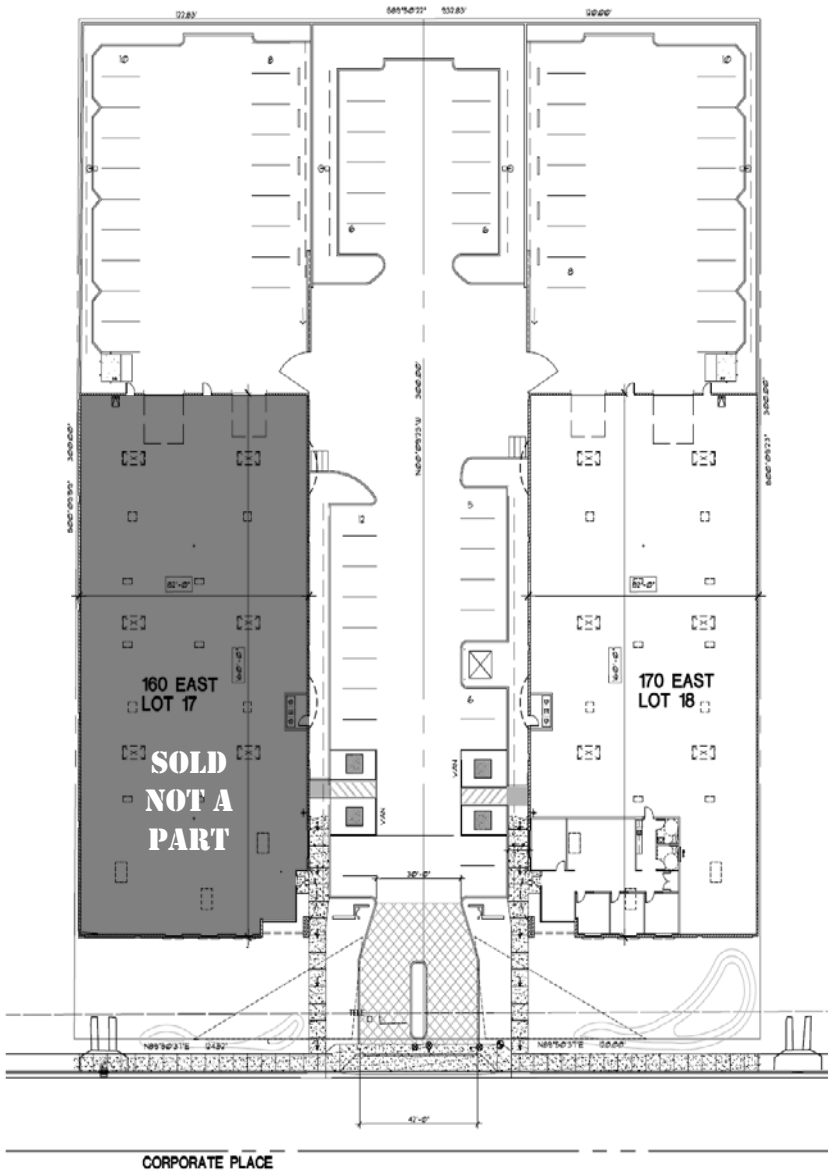
Locally Owned. Globally Connected. CORFAC INTERNATIONAL

TEMPE: 2323 W University Drive, Tempe, AZ 85281 | 480.966.2301
SCOTTSDALE: 8767 E Via de Commercio, Suite 101, Scottsdale, AZ 85258 | www.cpiaz.com

OFFICE/WAREHOUSE FOR LEASE

170 E CORPORATE PLACE • CHANDLER, AZ

LEASE RATE: \$1.35 GRS



The information contained herein has been obtained from various sources. We have no reason to doubt its accuracy; however, J & J Commercial Properties, Inc. has not verified such information and makes no guarantee, warranty or representation about such information. The prospective buyer or lessee should independently verify all dimensions, specifications, floor plans, and all information prior to the lease or purchase of the property. All offerings are subject to price change, prior sale, lease, or withdrawal from the market without prior notice. Effective: 11 05 25

CONTACTS

John Masciandaro
D 480.214.1113 • M 602.432.9851
jmasciandaro@cpi.az.com



COMMERCIAL PROPERTIES INC.

Locally Owned. Globally Connected. CORFAC INTERNATIONAL

TEMPE: 2323 W University Drive, Tempe, AZ 85281 | 480.966.2301
SCOTTSDALE: 8767 E Via de Commercio, Suite 101, Scottsdale, AZ 85258 | www.cpi.az.com