

Industrial Workspace For Lease
1121 N Loring Street
Portland, OR 97227



Apex Real Estate Partners
415 NW 11th Avenue / Portland, OR 97209
P. 503.595.2840 / www.apexcre.com

Matt Cole, Managing Director
503.595.2836
Matt@apexcre.com

Rennie Dunn, SIOR, Director
503.595.2845
Rennie@apexcre.com



Industrial Workspace



Available \pm 6,450 SF



Lease rate \$1.00/SF



14' - 16' clear heights



Excellent opportunity for a new or established winery to move into a licensed facility



Permitted plans available to add new entry with deck



Exposed timber & concrete floors



1 grade-level door / 1 dock-high door



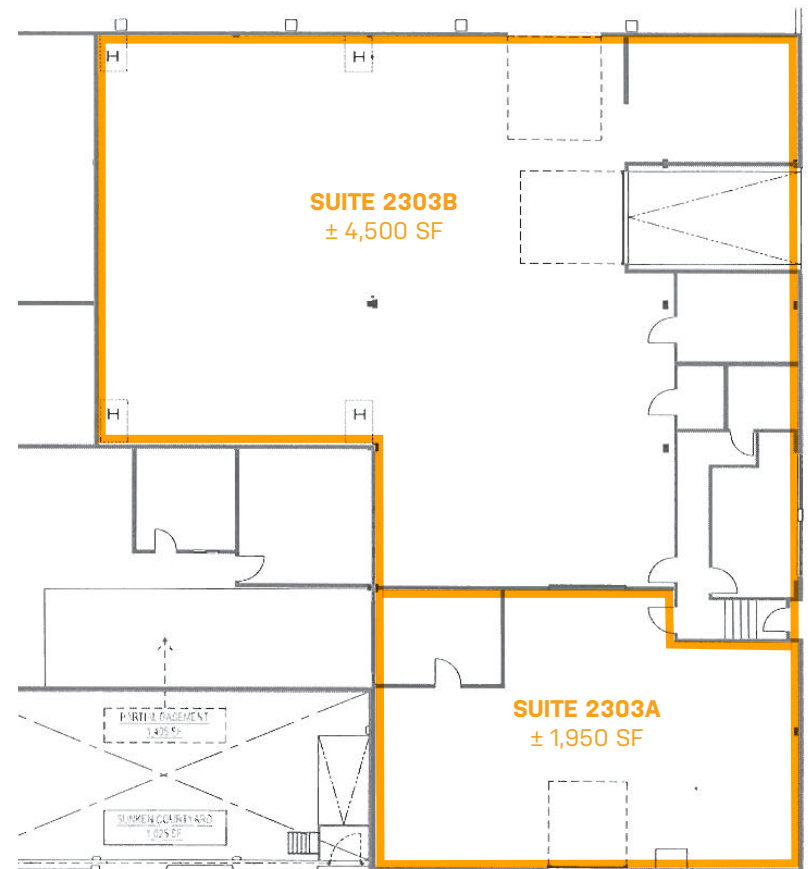
Excellent public transportation access with the TriMet MAX and bus lines just steps away



IG1 - General Industrial 1 zoning



On-site parking and ample street parking



PRIME EASTSIDE LOCATION

1121 N Loring is ideally located in the Close-in North Portland submarket. Just minutes from downtown, this property offers the advantages of proximity without the associated inconveniences.

The IG1 zoning permits a broad range of industrial uses and makerspace.

The property is just steps away from TriMet MAX and bus line, making it easy to access from all over the Portland Metro.

