

Commercial Building for Lease

420 Daniel Webster Hwy, Merrimack, NH



11,328 SF

Property Features:

- High Visibility
- Signalized Access
- Ample Parking
- Drive-up Window

About:

Located in the heart of the Daniel Webster Highway retail corridor in Merrimack, this site offers exceptional visibility, signalized access, and ample parking. The building is in excellent condition and provides space for outdoor storage and potential expansion. Situated in the C2 Commercial Zone, it accommodates a wide range of retail and commercial uses.



Contact Details:

Jesse Hepler, CCIM, MBA

603-785-2246

Jesse.Hepler@SVN.com

Brian Dano, CCIM

603-377-0309

Brian.Dano@SVN.com

Commercial Building for Lease

420 Daniel Webster Hwy, Merrimack, NH



Property Highlights:

- ▶ Located near Merrimack Premium Outlets
- ▶ High Visibility
- ▶ Ample Parking- 114 spaces
- ▶ Drive-up Window
- ▶ Roll-up Door
- ▶ Pylon Sign
- ▶ Signalized Access

Property Details:



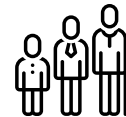
Population

1 mile: 3,385
3 miles: 25,218
5 miles: 60,861



Median HH Income

1 mile: \$110,264
3 miles: \$124,734
5 miles: \$125,379



Median Age

1 mile: 39.5 years
3 miles: 40 years
5 miles: 40 years

3-MILE DAYTIME POPULATION // 20,922

LEASE PRICE // \$15.50 PSF NNN

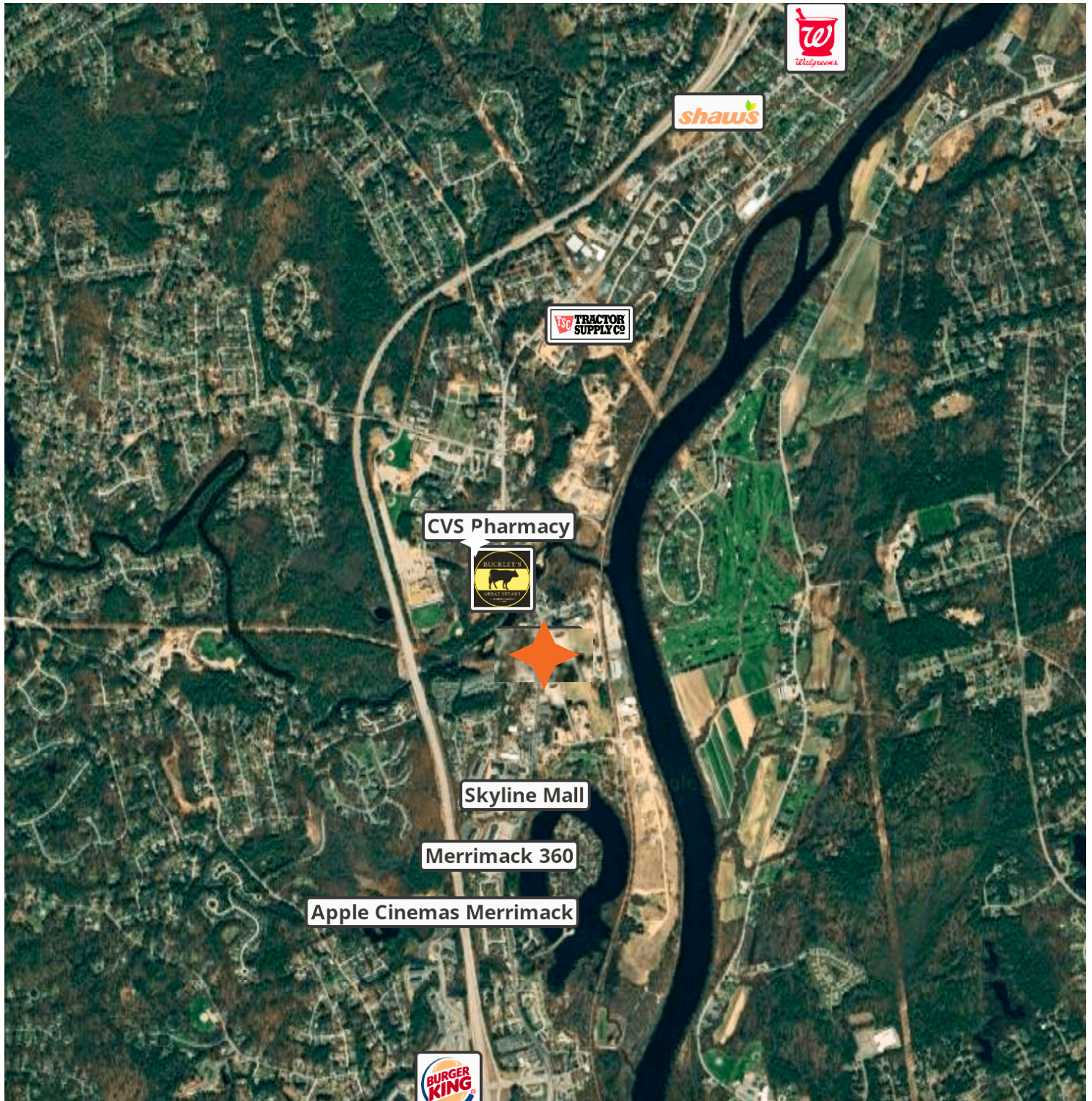
BUILDING SIZE // 11,328 SF

TRAFFIC // 24,000 VPD

ZONING // General Commercial C-2

Commercial Building for Lease

420 Daniel Webster Hwy, Merrimack, NH



Contact Details:

👤 Jesse Hepler, CCIM, MBA

📞 603-785-2246

✉️ Jesse.Hepler@SVN.com

Brian Dano, CCIM 👤

603-377-0309 📞

Brian.Dano@SVN.com ✉️