

JERSEY CITY, NJ

543-545 MARTIN LUTHER KING DRIVE, JERSEY CITY, NJ 07304



OFFERING SUMMARY

Available SF: 1,165 - 3,274 SF

Lease Rate: Call For Details

NEIGHBORING TENANTS



PROPERTY OVERVIEW

Mixed Use Downtown Retail

PROPERTY HIGHLIGHTS

- 2-3 Retail Spaces Available in New Luxury Mixed-Use Building
- 1,165 SF Corner Unit (End Cap)
- 1,244 - 2,030 SF (Can Be Combined)
- Great for Medical, Cafe, C-Store, Wireless and Salon
- Brand New Construction
- Prime Retail Corridor in an Emerging Neighborhood
- Convenient Access to Route 78, Route 9 and Route 440
- Nearby to Lightrail, NJCU, St. Peter's, Lincoln HS and Lincoln Park
- Excellent Street Level Exposure in Densely Populated Marketplace

FOR MORE INFORMATION CONTACT:

CHRISTOPHER CONWAY

201.703.9700 x143

cconway@thegoldsteingroup.com

Licensed Real Estate Broker | 45 EISENHOWER DRIVE | SUITE 246 | PARAMUS, NJ 07652

All information is from sources deemed reliable and is submitted subject to errors, omissions, change of price, terms, rental, prior sale and withdrawal without notice.



THEGOLDSTEINGROUP.COM

JERSEY CITY, NJ

543-545 MARTIN LUTHER KING DRIVE, JERSEY CITY, NJ 07304



FOR MORE INFORMATION CONTACT:

CHRISTOPHER CONWAY
201.703.9700 x143
cconway@thegoldsteingroup.com

Licensed Real Estate Broker | 45 EISENHOWER DRIVE | SUITE 246 | PARAMUS, NJ 07652

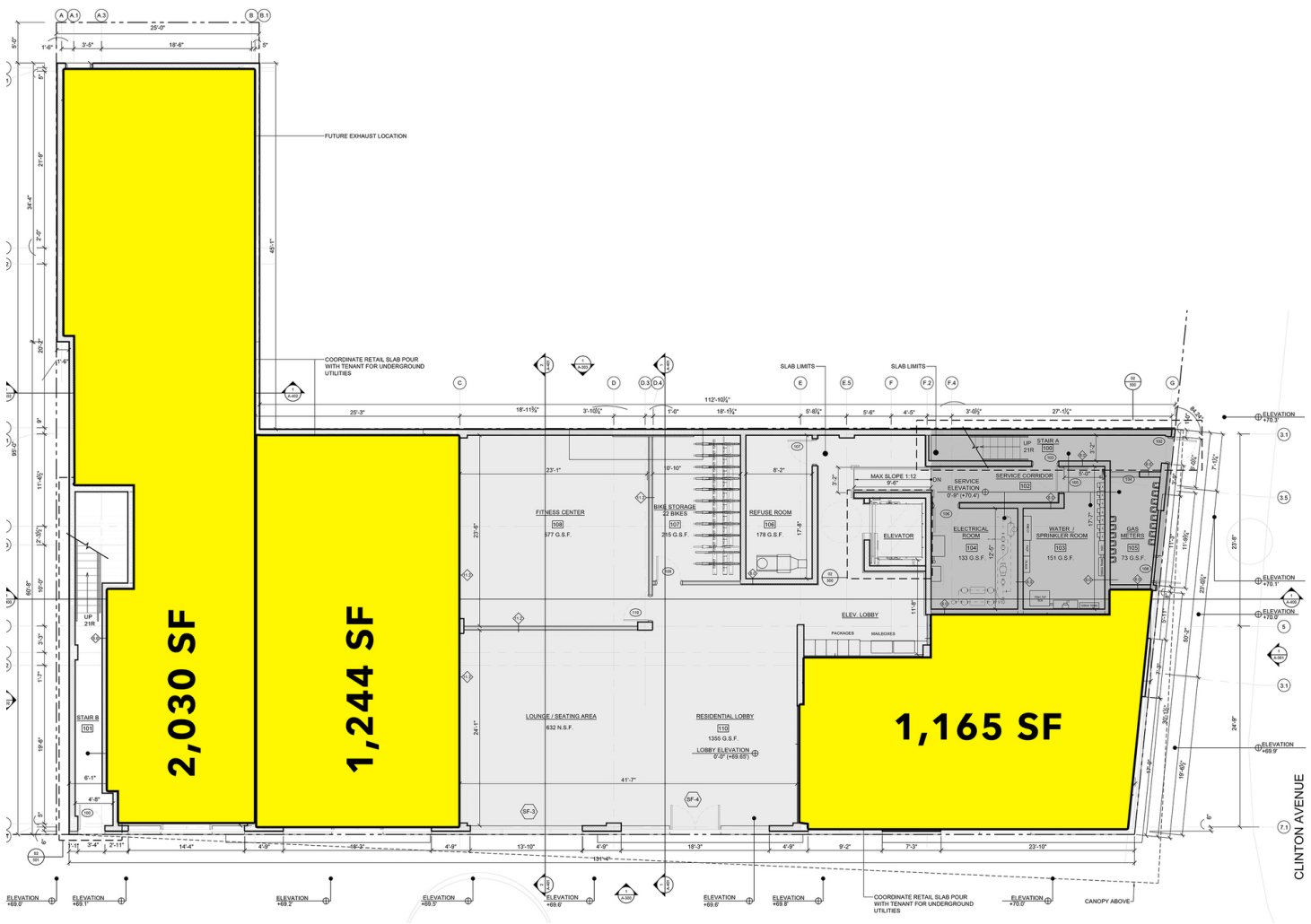
All information is from sources deemed reliable and is submitted subject to errors, omissions, change of price, terms, rental, prior sale and withdrawal without notice.



THEGOLDSTEINGROUP.COM

JERSEY CITY, NJ

543-545 MARTIN LUTHER KING DRIVE, JERSEY CITY, NJ 07304



FOR MORE INFORMATION CONTACT:

CHRISTOPHER CONWAY
201.703.9700 x143
cconway@thegoldsteingroup.com

Licensed Real Estate Broker | 45 EISENHOWER DRIVE | SUITE 246 | PARAMUS, NJ 07652

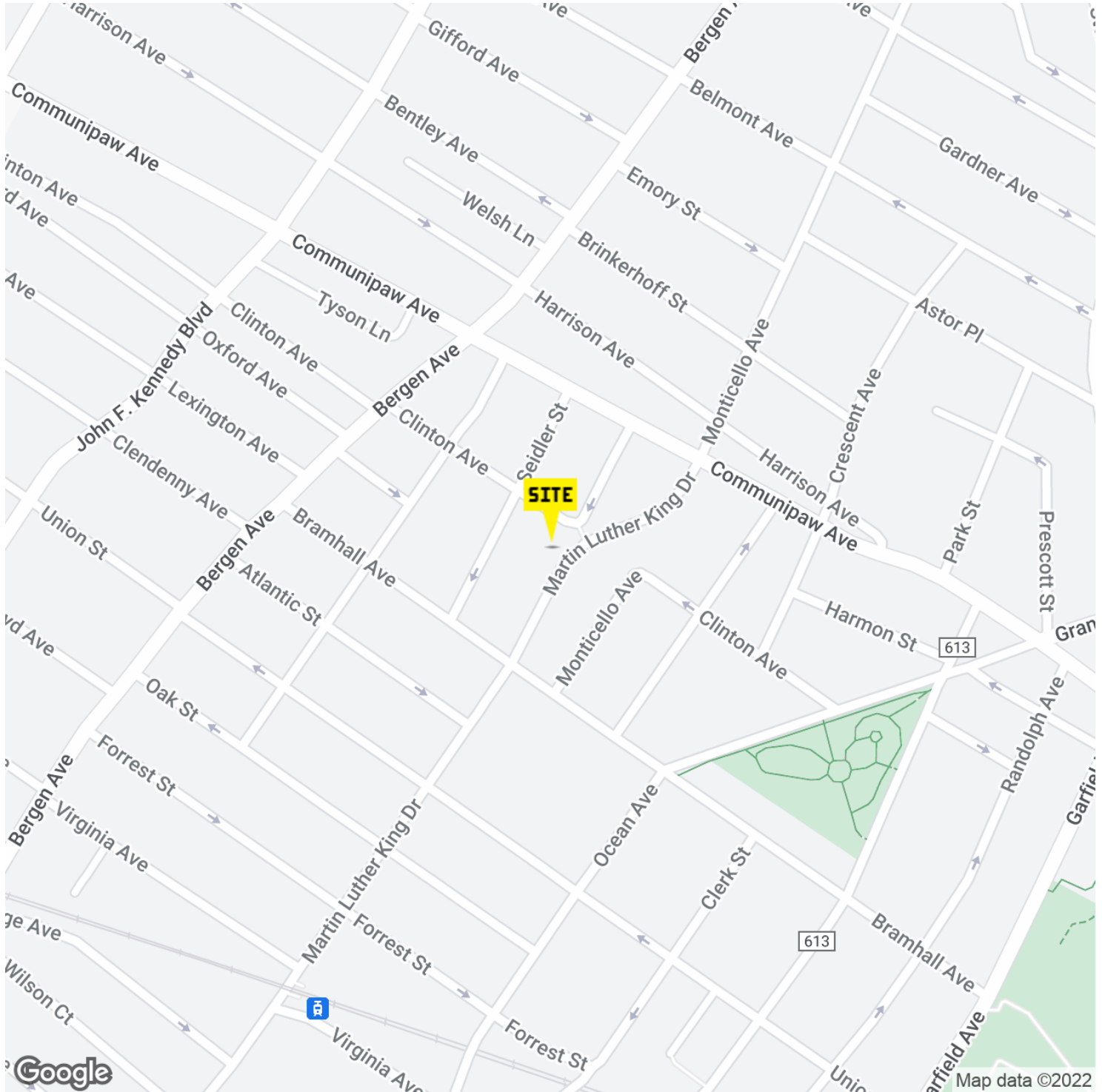
All information is from sources deemed reliable and is submitted subject to errors, omissions, change of price, terms, rental, prior sale and withdrawal without notice.



THEGOLDSTEINGROUP.COM

JERSEY CITY, NJ

543-545 MARTIN LUTHER KING DRIVE, JERSEY CITY, NJ 07304



FOR MORE INFORMATION CONTACT:

CHRISTOPHER CONWAY

201.703.9700 x143
cconway@thegoldsteingroup.com

Licensed Real Estate Broker | 45 EISENHOWER DRIVE | SUITE 246 | PARAMUS, NJ 07652

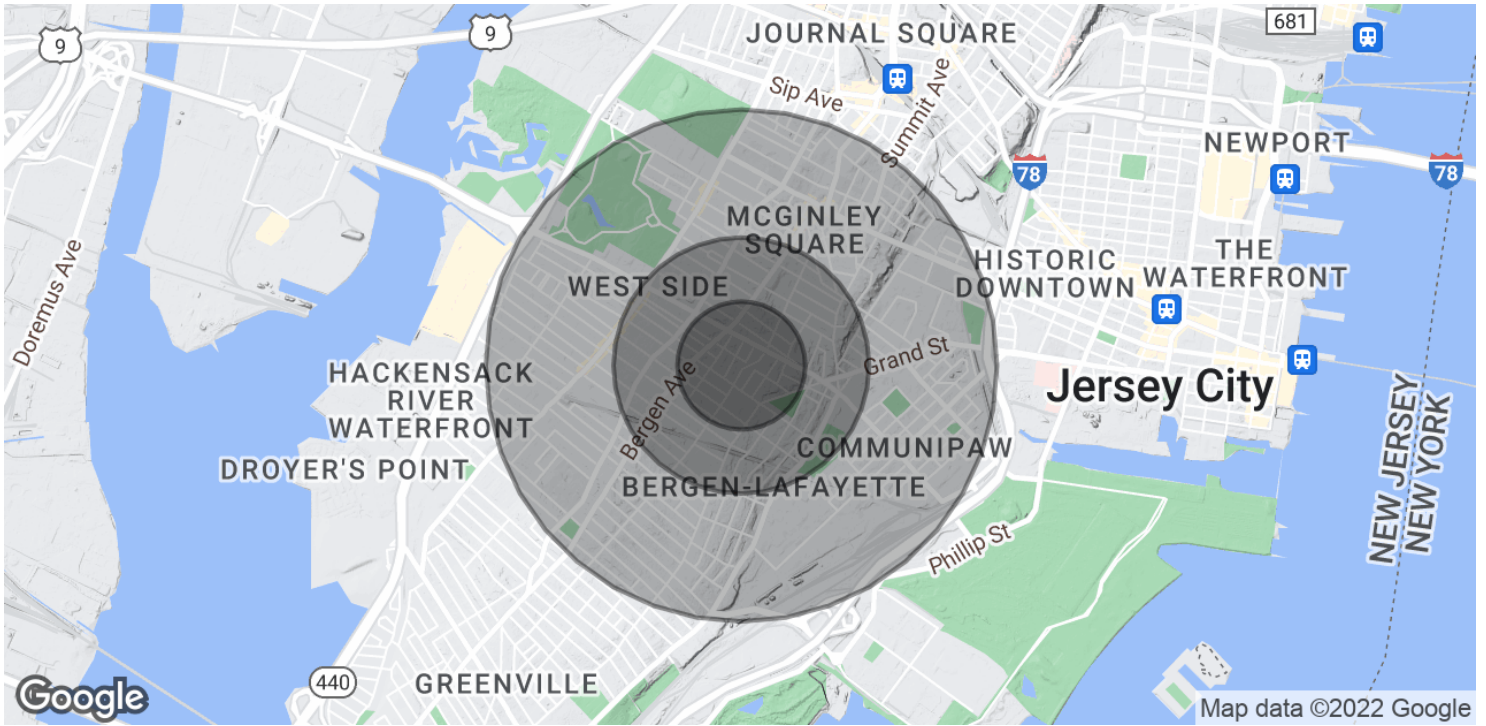
All information is from sources deemed reliable and is submitted subject to errors, omissions, change of price, terms, rental, prior sale and withdrawal without notice.



THEGOLDSTEINGROUP.COM

JERSEY CITY, NJ

543-545 MARTIN LUTHER KING DRIVE, JERSEY CITY, NJ 07304



POPULATION	0.25 MILES	0.5 MILES	1 MILE
Total Population	6,398	28,474	80,795
Average Age	34.7	34.4	35.0
Average Age (Male)	32.4	33.3	33.4
Average Age (Female)	36.9	34.7	36.2
HOUSEHOLDS & INCOME	0.25 MILES	0.5 MILES	1 MILE
Total Households	2,695	10,737	32,108
# of Persons per HH	2.4	2.7	2.5
Average HH Income	\$56,427	\$69,204	\$68,203
Average House Value	\$391,199	\$390,121	\$322,641

* Demographic data derived from 2020 ACS - US Census

FOR MORE INFORMATION CONTACT:

CHRISTOPHER CONWAY

201.703.9700 x143
cconway@thegoldsteingroup.com

Licensed Real Estate Broker | 45 EISENHOWER DRIVE | SUITE 246 | PARAMUS, NJ 07652

All information is from sources deemed reliable and is submitted subject to errors, omissions, change of price, terms, rental, prior sale and withdrawal without notice.



THEGOLDSTEINGROUP.COM