

South Brooke Plaza

4195 S Lee St, Buford, GA 30518



South Brooke Plaza

4195 S Lee St, Buford, GA 30518

Property Details

Great Location right off the very busy Buford Drive in Buford, Georgia. 1 mile off of Interstate 985 for easy access for you and your customers! Built out with rooms for office use but can be converted. This a 1-minute drive away from a Brand new 300,000+ Northside hospital which will bring incredible traffic to the area! Get in while you can!

Price: \$12.00 - \$20.00 /SF/YR

- Close to Home Depot, high traffic road
- Across the street from Restaurant Depot

View the full listing here: <https://www.loopnet.com/Listing/4195-S-Lee-St-Buford-GA/21779399/>

Rental Rate:	\$12.00 - \$20.00 /SF/YR
Total Space Available:	2,250 SF
Max. Contiguous:	1,250 SF
Property Type:	Shopping Center
Center Type:	Strip Center
Stores:	10
Center Properties:	1
Frontage:	107' on S Lee St
Gross Leasable Area:	8,330 SF
Walk Score ®:	46 (Car-Dependent)
Rental Rate Mo:	\$1.67 /SF/MO

South Brooke Plaza

4195 S Lee St, Buford, GA 30518

Listing spaces

1st Floor Ste B

Space Available:	1,000 SF
Rental Rate:	\$20.00 /SF/YR
Date Available:	Now
Service Type:	Triple Net (NNN)\$4.16
Built Out As:	Professional Services
Space Type:	Relet
Space Use:	Office
Lease Term:	Negotiable

Located in the left corner of the building.Very visible from the whole plazaWell Maintained with Office setting

2nd Floor Ste G

Space Available:	1,250 SF
Rental Rate:	\$12.00 /SF/YR
Date Available:	Now
Service Type:	Triple Net (NNN)\$4.16
Built Out As:	R&D
Space Type:	Relet
Space Use:	Office
Lease Term:	5 Years

South Brooke Plaza

4195 S Lee St, Buford, GA 30518

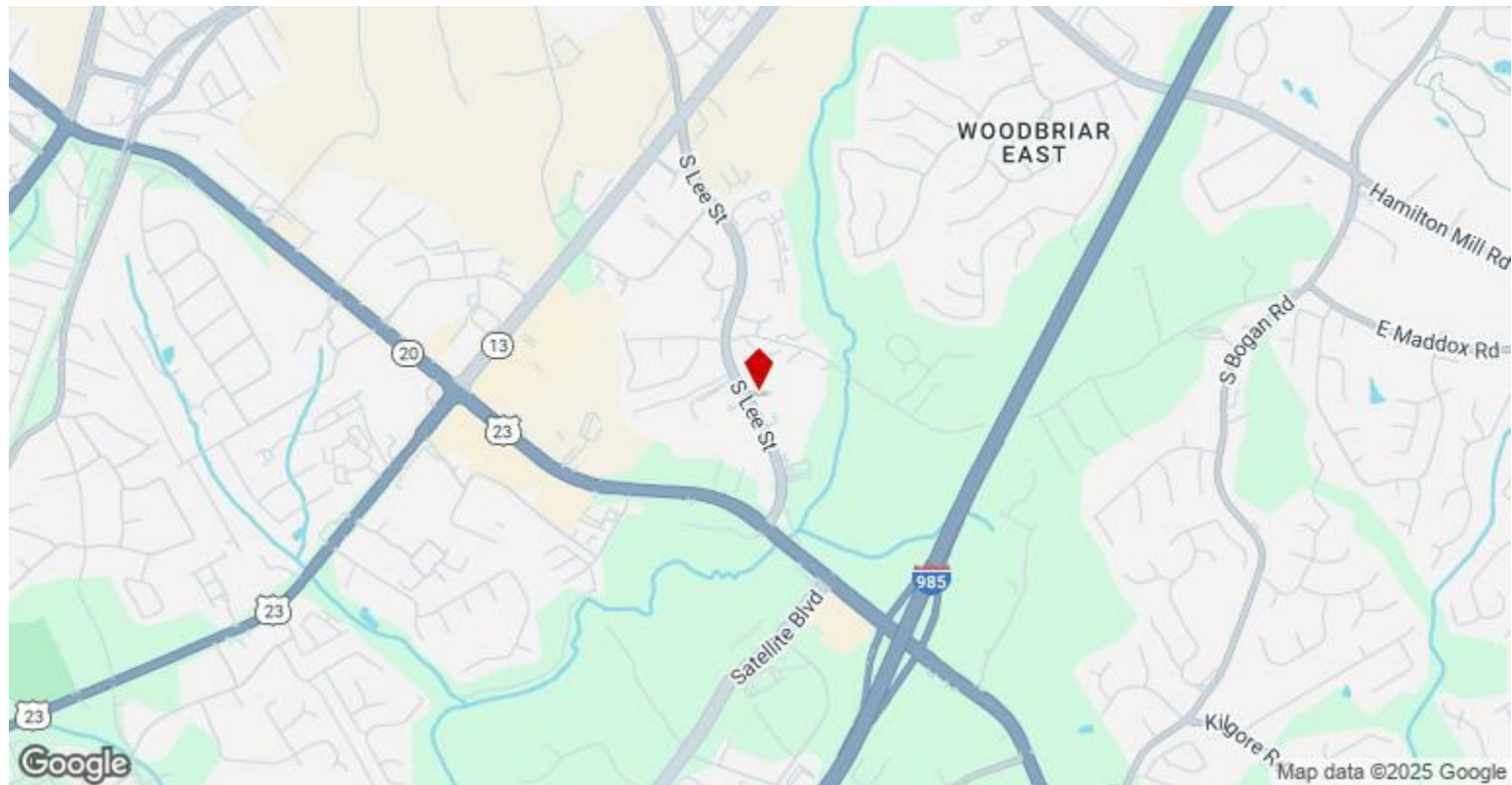
Major Tenant Information

Tenant	SF Occupied	Lease Expired
	-	
	-	February 2026
Miracle-Ear	2,500	
	1,000	
Tint Drive	-	
Yummy Picante	-	
	-	

South Brooke Plaza

4195 S Lee St, Buford, GA 30518

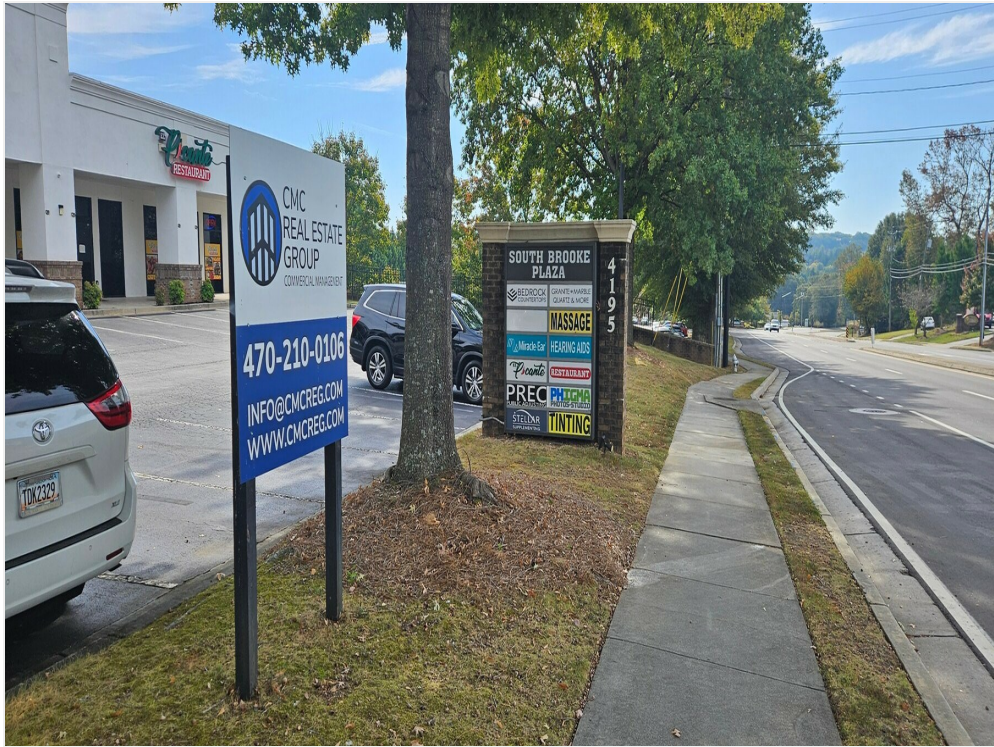
Location



South Brooke Plaza

4195 S Lee St, Buford, GA 30518

Property Photos



Street View 10/21/2025



Front Building View 10/21/2025

South Brooke Plaza

4195 S Lee St, Buford, GA 30518

Property Photos



Left Side view Building 10/21/2025



Backside View Building 10/21/2025

South Brooke Plaza

4195 S Lee St, Buford, GA 30518



Daniel Min

info@cmcreg.com

(470) 210-0106

CMC Real Estate Group

45 Old Peachtree Rd NW, Suite
700

Suwanee, GA 30024

