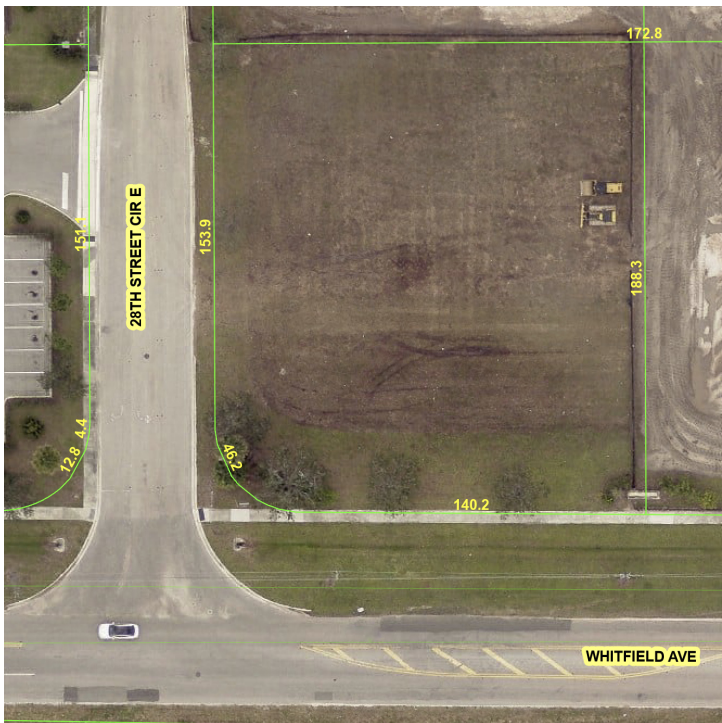
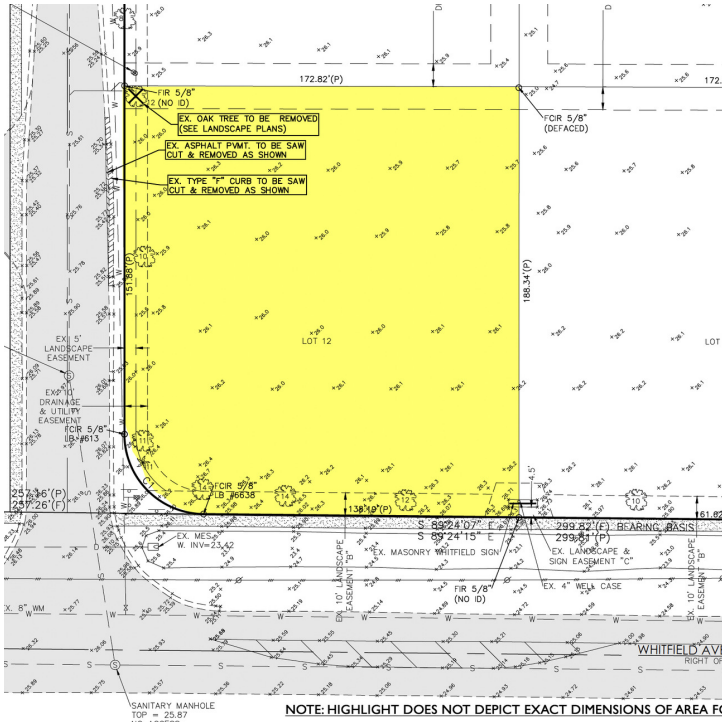




COMMERCIAL
REAL ESTATE

0.73 +/- ACRES OF INDUSTRIAL LAND

6711 28TH STREET CIR E, SARASOTA, FL 34243



PROPERTY DESCRIPTION

Prime 0.73 +/- acres of Industrial Land available for lease in the Whitfield Park of Commerce. Site is ideal for parking or storage as allowed under the HM zoning, and is centrally located off Highway 301 for easy access to both Manatee and Sarasota Counties, and minutes to Interstate-75 via State Road 70 or University Parkway.

LOCATION DESCRIPTION

From Highway 301, go east on Whitfield Avenue to 28th Street Circle East. Property is located on the northeast corner of Whitfield Avenue and 28th Circle East in the Whitfield Park of Commerce. Look for sign.

PROPERTY INFORMATION

TOTAL LAND:	32,135 sq. ft. (0.738 acres)
ZONING:	HM
UTILITIES:	None
FENCING:	None
LOADING DOCK:	No
FIRE SPRINKLERS:	No
PROPERTY ID#:	Manatee County, PID#1876701909

PRICING INFORMATION

LEASE RATE:	\$1.45/sq. ft. NNN \$3,882.98/month NNN
NNN:	\$0.26/sq. ft. \$696.26/month
TOTAL RENT PER MONTH:	\$4,579.24/month

Michael Saunders & Company
LICENSED REAL ESTATE BROKER

1605 Main Street Suite 500 | Sarasota, FL
941.957.3730 | MSCcommercial.com

PRESENTED BY:

Roberta Kolton Cera

Senior Commercial Advisor

941.928.1428

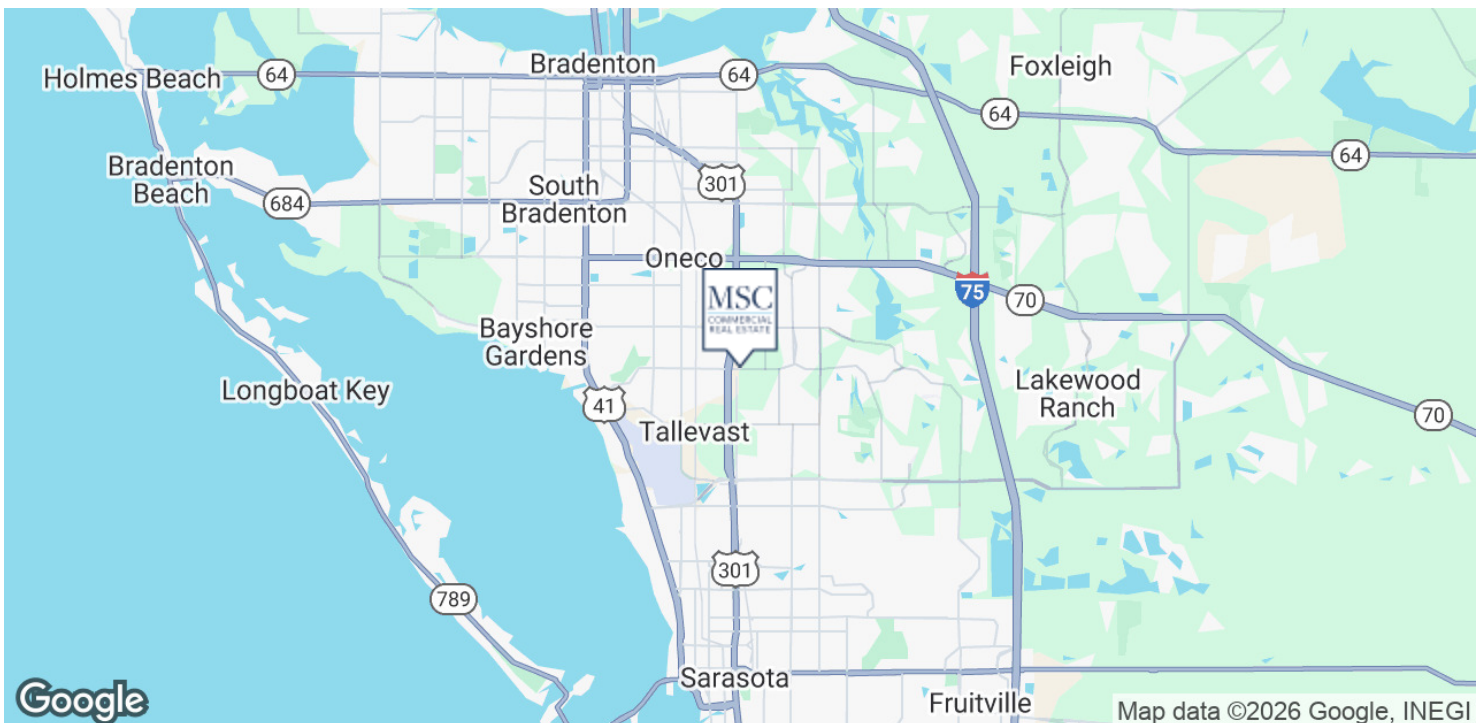
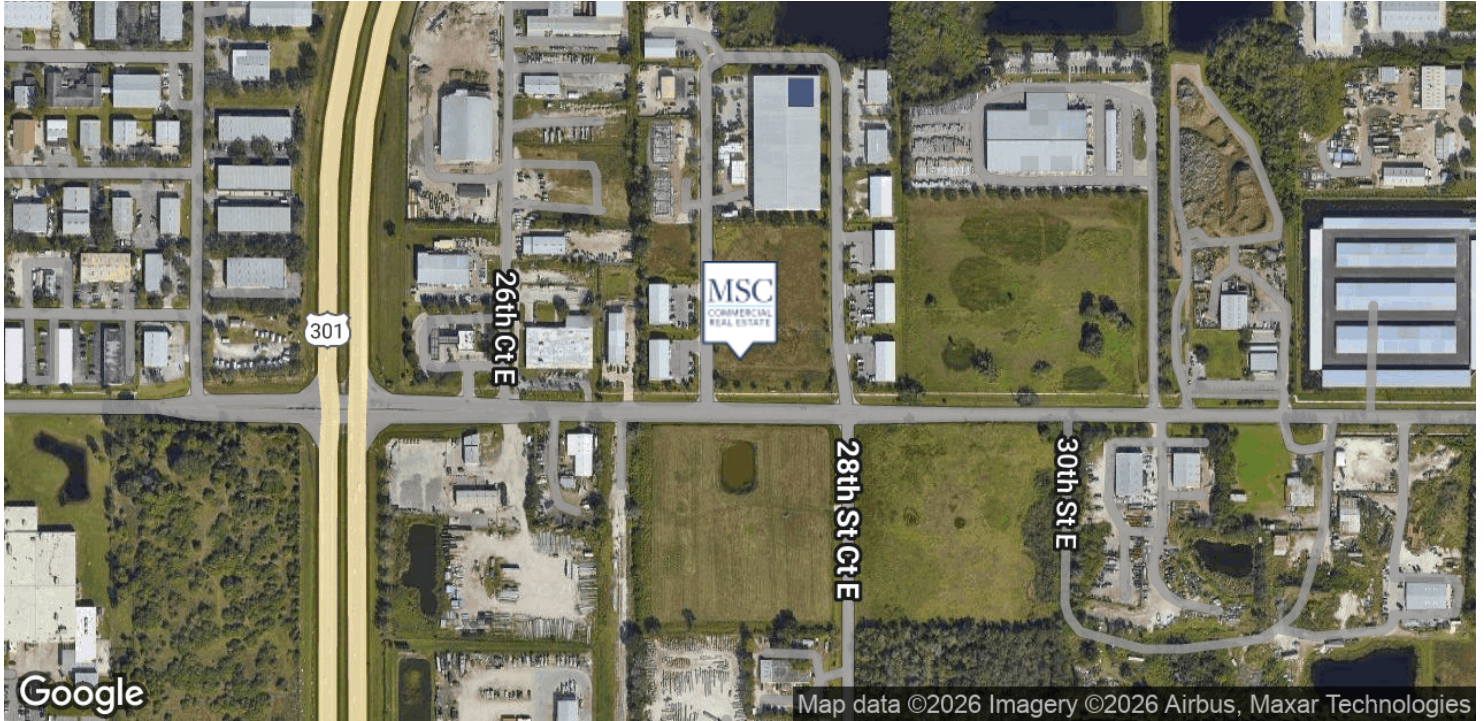
robertakolton@msccommercial.com

MSC

COMMERCIAL
REAL ESTATE

0.73 +/- ACRES OF INDUSTRIAL LAND

6711 28TH STREET CIR E, SARASOTA, FL 34243



Michael Saunders & Company
LICENSED REAL ESTATE BROKER

1605 Main Street Suite 500 | Sarasota, FL
941.957.3730 | MSCcommercial.com

PRESENTED BY:

Roberta Kolton Cera

Senior Commercial Advisor

941.928.1428

robertakolton@msccommercial.com