



MISSION WEST SHOPPING CENTER

PRIME RETAIL SPACES FOR LEASE

Johnson Drive & Martway St., Mission, KS | A Kansas City Suburb



\$15-16/SF NNN | 1,300 SF UP TO 5,600 SF

- 1,300 SF and 2,000 SF retail spaces. Asking \$16/SF NNN
- 5,600 SF former medical office with exam rooms, lab space, plumbing throughout. Asking \$15/SF NNN
- Join NEW Rally House, Planet Fitness, Dollar Tree, The Other Place, Kansas Drivers License Bureau and more
- #1 Planet Fitness in Kansas with 23,000 average monthly visits and #3 Dollar Tree in Kansas with 21,000 average monthly visits
- Highly accessible location just seconds from Metcalf Avenue (69 Highway), Shawnee Mission Parkway and I-35. Large daytime population and very dense well established residential community, two High Schools are within .5 miles
- High Traffic area with over 29,000 cars per day and great building and monument signage available
- Mission West is located across the street from HyVee Grocery and Natural Grocers
- [View 1,300 square foot Space E - 360° Tour](#)



CLICK HERE TO VIEW MORE
LISTING INFORMATION

For More Information Contact:

Exclusive Agents

GRANT SUMMERS | 816.412.7307 | gsummers@blockandco.com

PAUL MASSALI | 816.412.7409 | pmassali@blockandco.com

MAX KOSOGLAD | 816.412.7363 | mkosoglad@blockandco.com

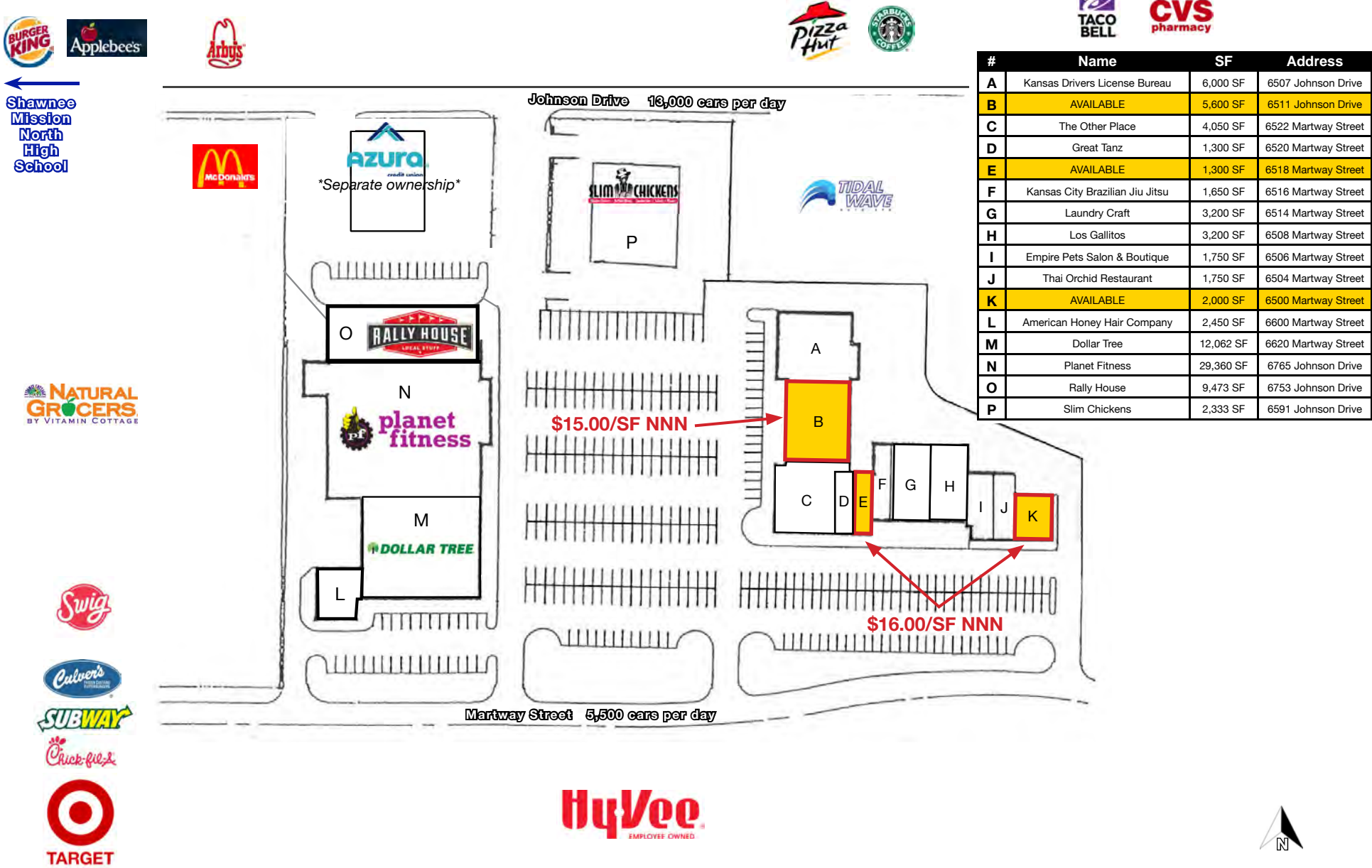


MISSION WEST SHOPPING CENTER

PRIME RETAIL SPACES FOR LEASE

Johnson Dr. & Martway St., Mission, KS | A Kansas City Suburb

SITE PLAN





MISSION WEST SHOPPING CENTER

PRIME RETAIL SPACES FOR LEASE

Johnson Dr. & Martway St., Mission, KS | A Kansas City Suburb

DRONE PHOTO NW





MISSION WEST SHOPPING CENTER

PRIME RETAIL SPACES FOR LEASE

Johnson Dr. & Martway St., Mission, KS | A Kansas City Suburb

DRONE PHOTO SE





MISSION WEST SHOPPING CENTER

PRIME RETAIL SPACES FOR LEASE

Johnson Dr. & Martway St., Mission, KS | A Kansas City Suburb

AERIAL





MISSION WEST SHOPPING CENTER

PRIME RETAIL SPACES FOR LEASE

Johnson Dr. & Martway St., Mission, KS | A Kansas City Suburb

PHOTOS





MISSION WEST SHOPPING CENTER

PRIME RETAIL SPACES FOR LEASE

Johnson Dr. & Martway St., Mission, KS | A Kansas City Suburb

1,300 SF SPACE PHOTOS



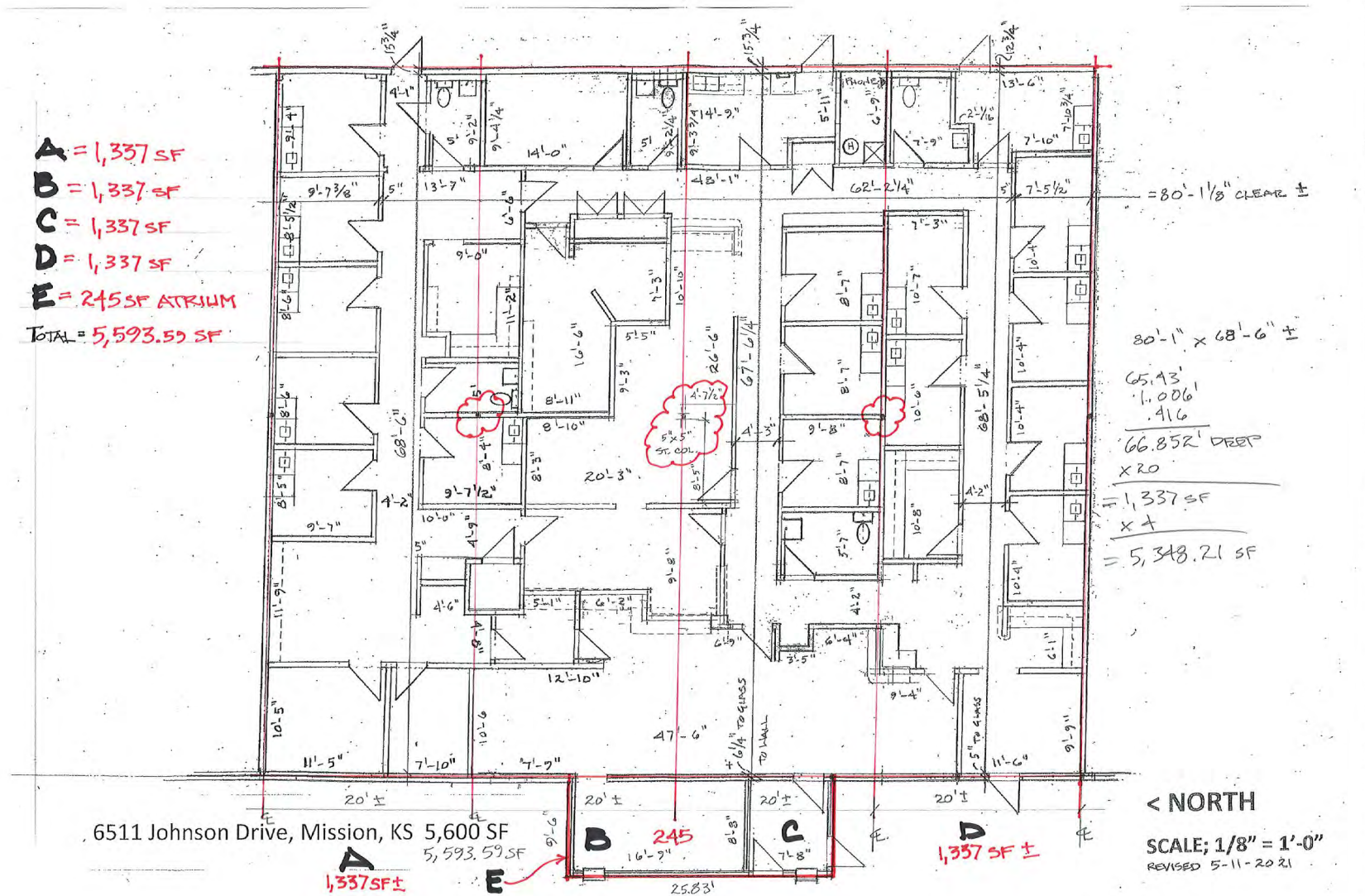


MISSION WEST SHOPPING CENTER

PRIME RETAIL SPACES FOR LEASE

Johnson Dr. & Martway St., Mission, KS | A Kansas City Suburb

5,600 SF FORMER MEDICAL OFFICE SPACE FLOOR PLAN

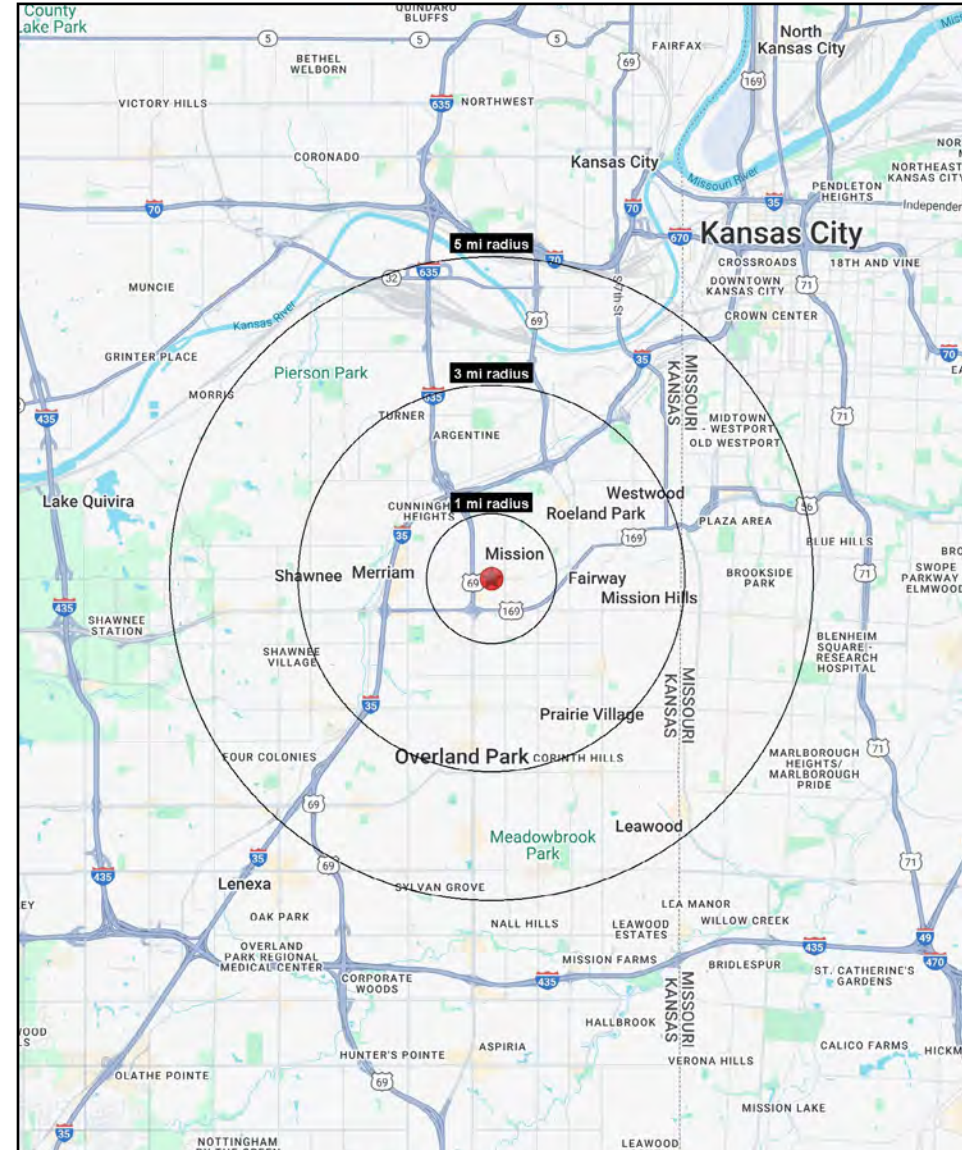
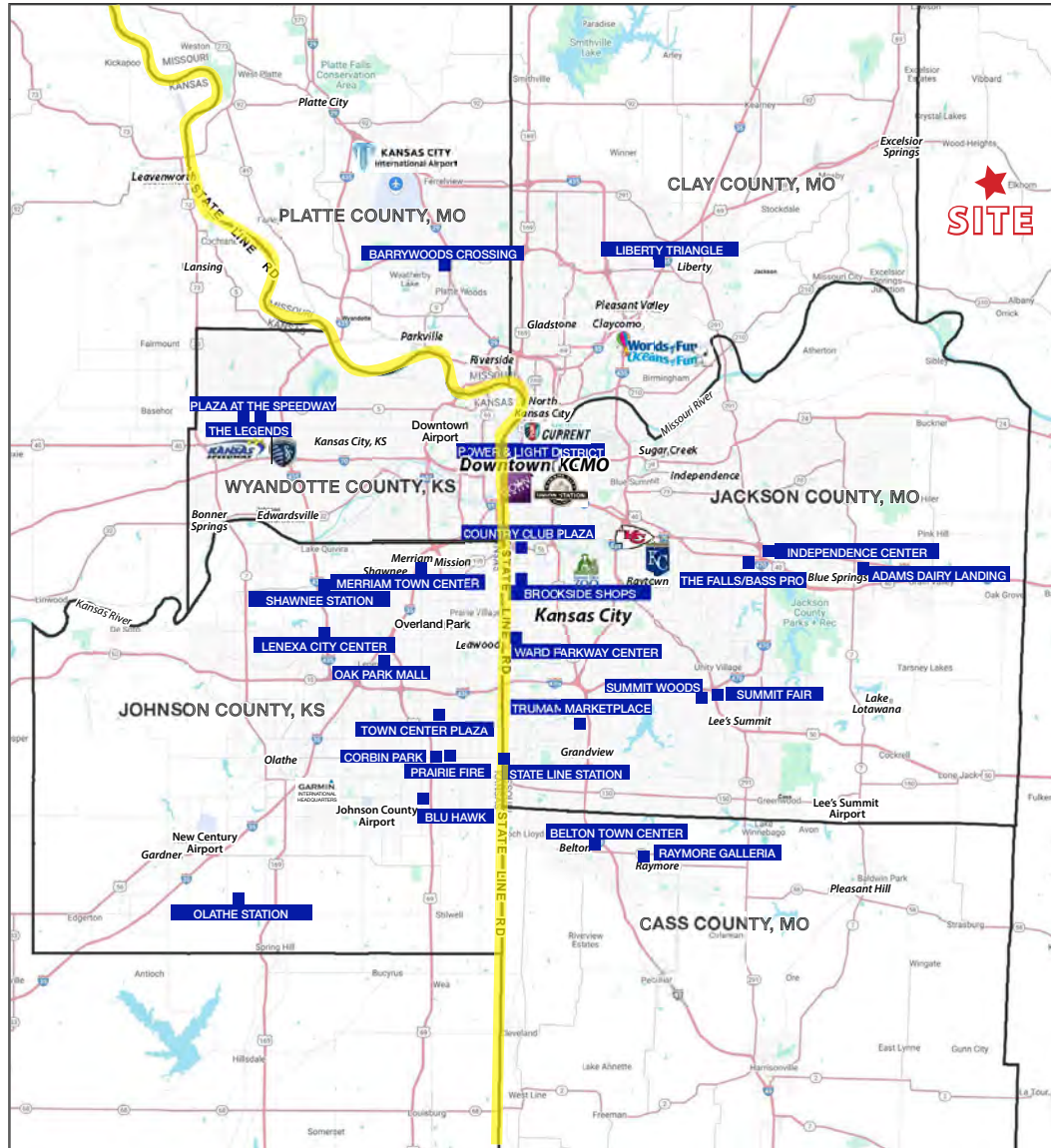




MISSION WEST SHOPPING CENTER

PRIME RETAIL SPACES FOR LEASE

Johnson Dr. & Martway St., Mission, KS | A Kansas City Suburb





MISSION WEST SHOPPING CENTER

PRIME RETAIL SPACES FOR LEASE

Johnson Dr. & Martway St., Mission, KS | A Kansas City Suburb

Johnson Drive & Riggs Avenue Mission, KS 66202	1 mi radius	3 mi radius	5 mi radius
Population			
2025 Estimated Population	10,916	90,551	257,865
2030 Projected Population	10,903	88,793	255,378
2020 Census Population	10,569	90,514	255,437
2010 Census Population	10,121	88,189	245,879
Projected Annual Growth 2025 to 2030	-	-0.4%	-0.2%
Historical Annual Growth 2010 to 2025	0.5%	0.2%	0.3%
2025 Median Age	38.0	37.2	37.2
Households			
2025 Estimated Households	5,516	40,961	117,329
2030 Projected Households	5,638	40,900	118,141
2020 Census Households	5,188	39,968	114,469
2010 Census Households	4,963	38,987	109,970
Projected Annual Growth 2025 to 2030	0.4%	-	0.1%
Historical Annual Growth 2010 to 2025	0.7%	0.3%	0.4%
Race and Ethnicity			
2025 Estimated White	81.5%	77.8%	76.3%
2025 Estimated Black or African American	5.5%	5.7%	7.4%
2025 Estimated Asian or Pacific Islander	2.4%	2.8%	3.0%
2025 Estimated American Indian or Native Alaskan	0.3%	0.5%	0.5%
2025 Estimated Other Races	10.4%	13.2%	12.8%
2025 Estimated Hispanic	11.2%	14.9%	14.4%
Income			
2025 Estimated Average Household Income	\$102,179	\$123,412	\$122,461
2025 Estimated Median Household Income	\$89,825	\$92,782	\$93,538
2025 Estimated Per Capita Income	\$51,725	\$55,915	\$55,851
Education (Age 25+)			
2025 Estimated Elementary (Grade Level 0 to 8)	1.6%	2.5%	2.4%
2025 Estimated Some High School (Grade Level 9 to 11)	1.5%	3.1%	3.3%
2025 Estimated High School Graduate	13.4%	17.5%	16.9%
2025 Estimated Some College	24.5%	18.6%	17.1%
2025 Estimated Associates Degree Only	7.0%	7.8%	6.8%
2025 Estimated Bachelors Degree Only	32.4%	31.1%	31.9%
2025 Estimated Graduate Degree	19.5%	19.5%	21.7%
Business			
2025 Estimated Total Businesses	798	3,610	12,980
2025 Estimated Total Employees	11,174	42,042	143,262
2025 Estimated Employee Population per Business	14.0	11.6	11.0
2025 Estimated Residential Population per Business	13.7	25.1	19.9

©2025, Sites USA, Chandler, Arizona, 480-491-1112 Demographic Source: Applied Geographic Solutions 5/2025, TIGER Geography - RS1