

PRESIDENTIAL CT I

6213-6225 Presidential Court | Fort Myers, FL 33919

Office Units for Lease



LQ Commercial
REAL ESTATE SERVICES

LQCRE.COM



\$16.00
PSF



880 - 2,185 SF
UNIT SIZE



46,409 SF
RBA

- 880-2,018 SF office units for lease.
- Near the intersection of Summerlin Road and College Parkway, two of Fort Myers' busiest commercial corridors.
- Minutes from US-41 (Cleveland Avenue), a primary north-south commercial corridor.
- Within a dense office and service corridor that includes medical practices, financial institutions, and professional service firms.
- Less than a mile from Florida SouthWestern State College.



PROPERTIES.LQCRE.COM/PRESIDENTIAL-OFFICE



TOTAL POPULATION
157,028



5-MI EMPLOYEES
100,174



AVERAGE HH INCOME
\$111,853

 **LQ Commercial**
REAL ESTATE SERVICES
3555 Kraft Rd #260
Naples, FL 34105
LQCRE.COM

Mike Concilla
Principal
D: 239.275.4922 x405
C: 239.823.9882
mconcilla@lqcre.com

Nick Matson
Associate
D: 239.275.4922 x408
C: 239.351.0137
nmatson@lqcre.com

PRESIDENTIAL CT I

6213-6225 Presidential Court | Fort Myers, FL 33919

Office Units for Lease



LQ Commercial
REAL ESTATE SERVICES

LQCRE.COM

AVAILABLE SPACES

SUITE	SIZE	LEASE RATE	DESCRIPTION
6123 Presidential Court #110	880 SF	\$16.00 PSF	<ul style="list-style-type: none">• Large Room (Conference or Open Workspace)• Restroom• Break Room• 2 Offices <p><i>Flexible suite with meeting space</i></p>
6213 Presidential Court #130	2,018 SF	\$16.00 PSF	<ul style="list-style-type: none">• 5 Private Offices• Reception Area• Large Conference Room• 2 Restrooms• Break Room <p><i>Ideal for medical, professional, or administrative users</i></p>
6225 Presidential Court #110	2,185 SF	\$16.00 PSF	<ul style="list-style-type: none">• 3 Offices• 2 Restrooms• Kitchen/Break Room• Large Open Area• Big Storage Room or Another Office
6225 Presidential Court #170	1,000 SF	\$16.00 PSF	<ul style="list-style-type: none">• 2 Private Offices• Conference Room• Restroom• Large Hallway / Waiting Room



LQ Commercial
REAL ESTATE SERVICES

3555 Kraft Rd #260

Naples, FL 34105

LQCRE.COM

Mike Concilla

Principal

D: 239.275.4922 x405

C: 239.823.9882

mconcilla@lqcre.com

Nick Matson

Associate

D: 239.275.4922 x408

C: 239.351.0137

nmatson@lqcre.com

PRESIDENTIAL CT I

6213-6225 Presidential Court | Fort Myers, FL 33919

Office Units for Lease



LQ Commercial
REAL ESTATE SERVICES

LQCRE.COM



LQ Commercial
REAL ESTATE SERVICES

3555 Kraft Rd #260

Naples, FL 34105

LQCRE.COM

Mike Concilla

Principal

D: 239.275.4922 x405

C: 239.823.9882

mconcilla@lqcre.com

Nick Matson

Associate

D: 239.275.4922 x408

C: 239.351.0137

nmatson@lqcre.com

Information obtained from owner(s) or other sources deemed reliable. We have no reason to doubt its accuracy, but cannot guarantee it. All properties subject to change or withdrawal without notice.

PRESIDENTIAL CT I

6213-6225 Presidential Court | Fort Myers, FL 33919

Office Units for Lease

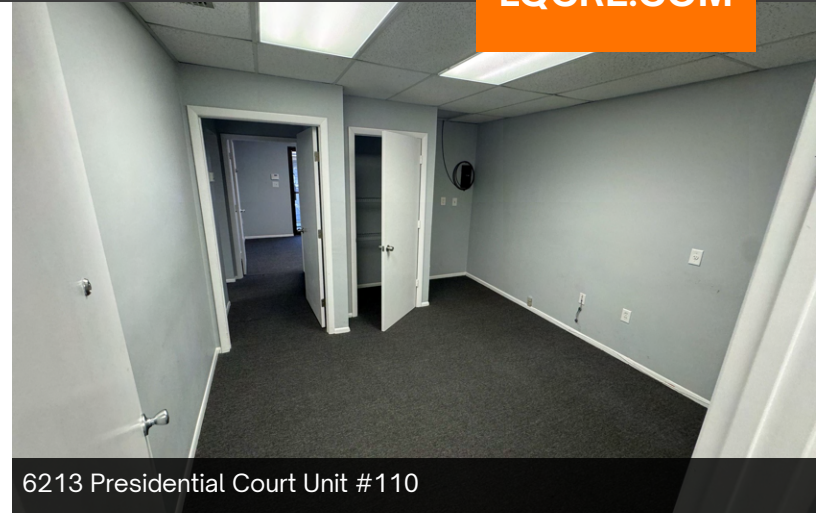


LQ Commercial
REAL ESTATE SERVICES

LQCRE.COM



6213 Presidential Court Unit #110



6213 Presidential Court Unit #110



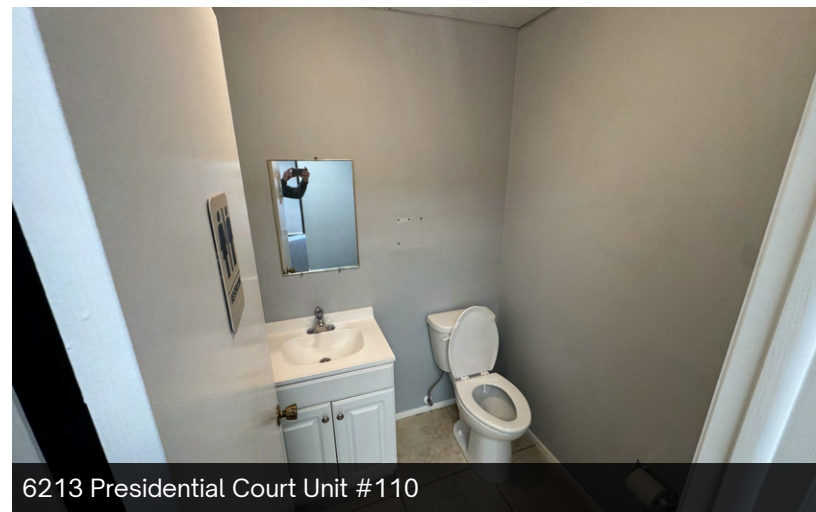
6213 Presidential Court Unit #110



6213 Presidential Court Unit #110



6213 Presidential Court Unit #110



6213 Presidential Court Unit #110



LQ Commercial
REAL ESTATE SERVICES

3555 Kraft Rd #260

Naples, FL 34105

LQCRE.COM

Mike Concilla

Principal

D: 239.275.4922 x405

C: 239.823.9882

mconcilla@lqcre.com

Nick Matson

Associate

D: 239.275.4922 x408

C: 239.351.0137

nmatson@lqcre.com

Information obtained from owner(s) or other sources deemed reliable. We have no reason to doubt its accuracy, but cannot guarantee it. All properties subject to change or withdrawal without notice.

PRESIDENTIAL CT I

6213-6225 Presidential Court | Fort Myers, FL 33919

Office Units for Lease



LQ Commercial
REAL ESTATE SERVICES

LQCRE.COM



6213 Presidential Court #130



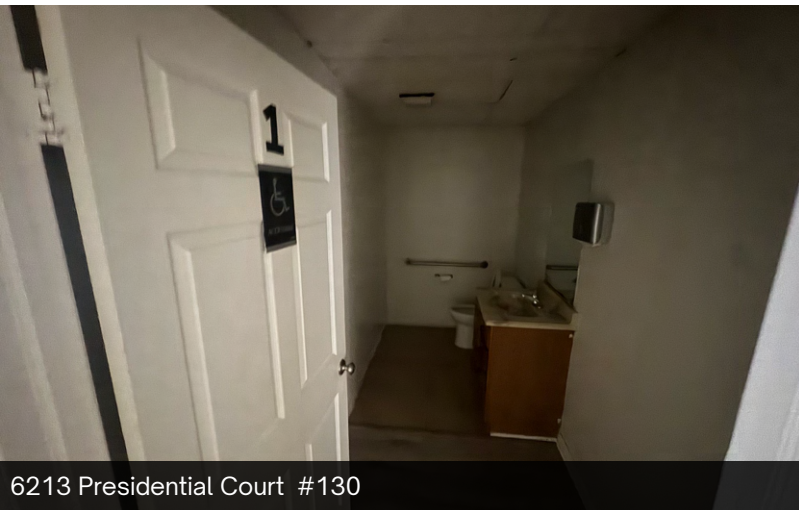
6213 Presidential Court #130



6213 Presidential Court #130



6213 Presidential Court #130



6213 Presidential Court #130



6213 Presidential Court #130



LQ Commercial
REAL ESTATE SERVICES

3555 Kraft Rd #260

Naples, FL 34105

LQCRE.COM

Mike Concilla

Principal

D: 239.275.4922 x405

C: 239.823.9882

mconcilla@lqcre.com

Nick Matson

Associate

D: 239.275.4922 x408

C: 239.351.0137

nmatson@lqcre.com

Information obtained from owner(s) or other sources deemed reliable. We have no reason to doubt its accuracy, but cannot guarantee it. All properties subject to change or withdrawal without notice.

PRESIDENTIAL CT I

6213-6225 Presidential Court | Fort Myers, FL 33919

Office Units for Lease

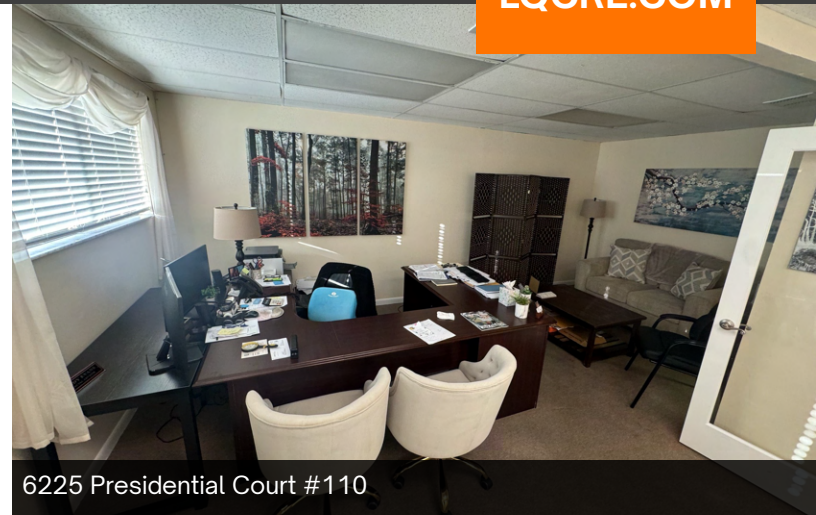


LQ Commercial
REAL ESTATE SERVICES

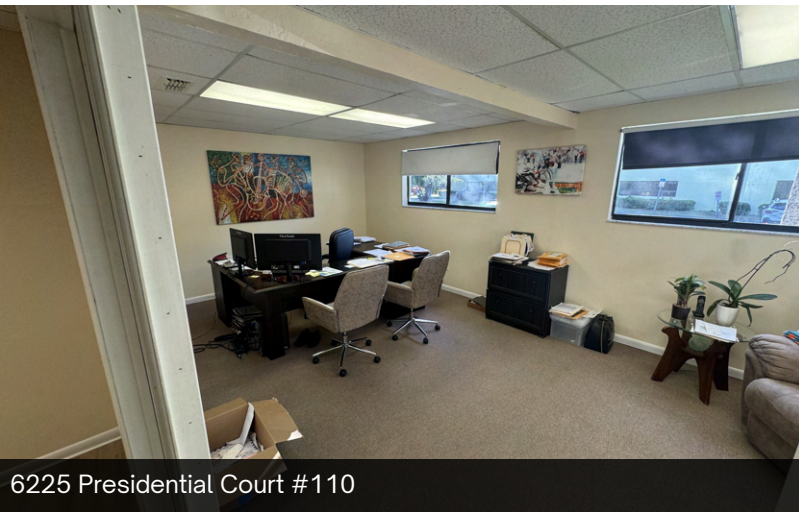
LQCRE.COM



6225 Presidential Court #110



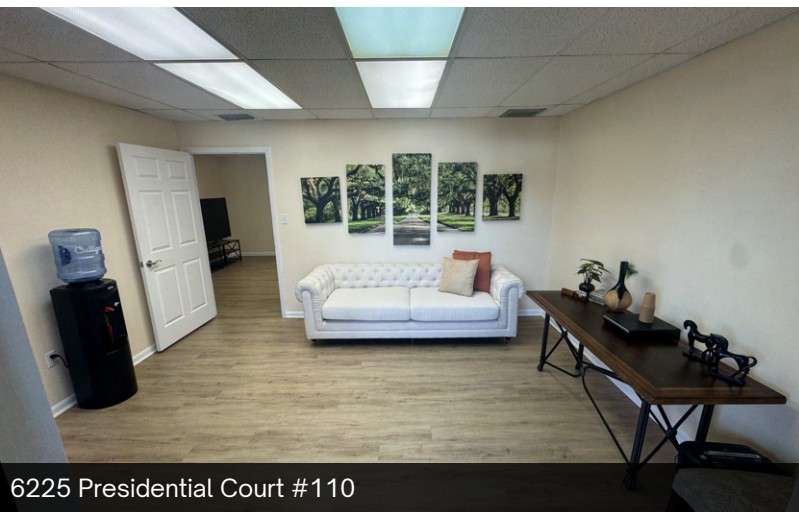
6225 Presidential Court #110



6225 Presidential Court #110



6225 Presidential Court #110



6225 Presidential Court #110



6225 Presidential Court #110



LQ Commercial
REAL ESTATE SERVICES

3555 Kraft Rd #260

Naples, FL 34105

LQCRE.COM

Mike Concilla

Principal

D: 239.275.4922 x405

C: 239.823.9882

mconcilla@lqcre.com

Nick Matson

Associate

D: 239.275.4922 x408

C: 239.351.0137

nmatson@lqcre.com

Information obtained from owner(s) or other sources deemed reliable. We have no reason to doubt its accuracy, but cannot guarantee it. All properties subject to change or withdrawal without notice.

PRESIDENTIAL CT I

6213-6225 Presidential Court | Fort Myers, FL 33919

Office Units for Lease

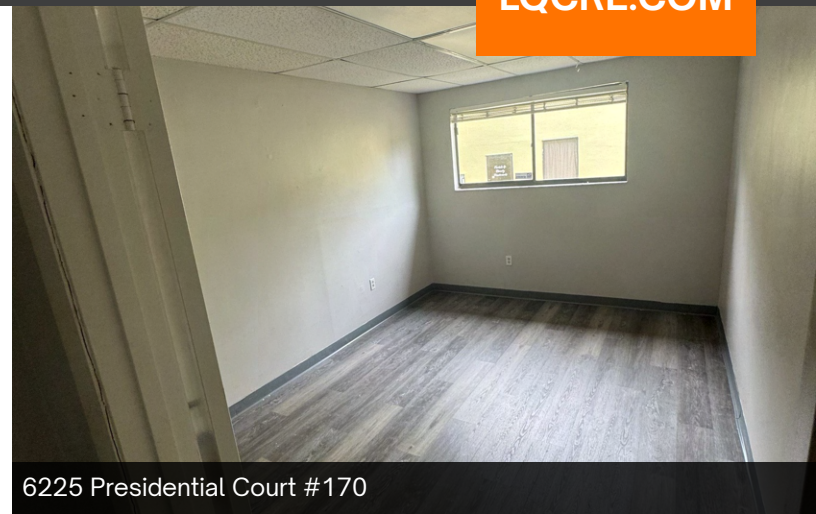


LQ Commercial
REAL ESTATE SERVICES

LQCRE.COM



6225 Presidential Court #170



6225 Presidential Court #170



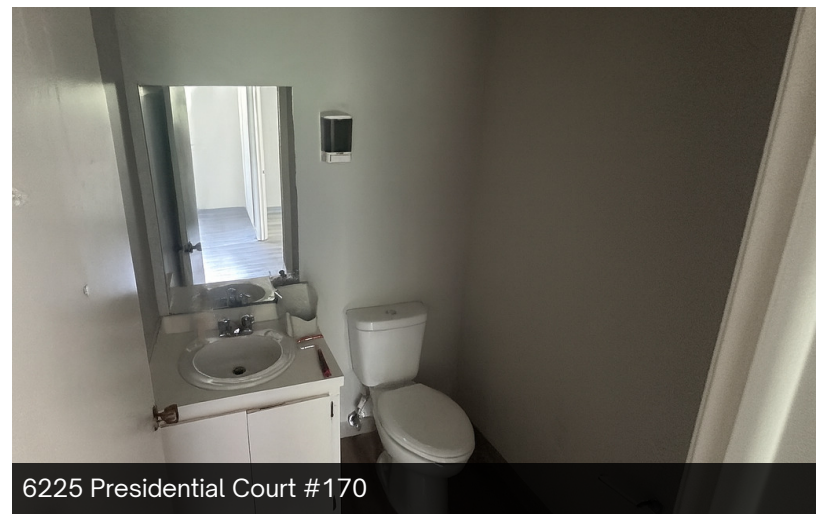
6225 Presidential Court #170



6225 Presidential Court #170



6225 Presidential Court #170



6225 Presidential Court #170



LQ Commercial
REAL ESTATE SERVICES

3555 Kraft Rd #260

Naples, FL 34105

LQCRE.COM

Mike Concilla

Principal

D: 239.275.4922 x405

C: 239.823.9882

mconcilla@lqcre.com

Nick Matson

Associate

D: 239.275.4922 x408

C: 239.351.0137

nmatson@lqcre.com

Information obtained from owner(s) or other sources deemed reliable. We have no reason to doubt its accuracy, but cannot guarantee it. All properties subject to change or withdrawal without notice.

PRESIDENTIAL CT I

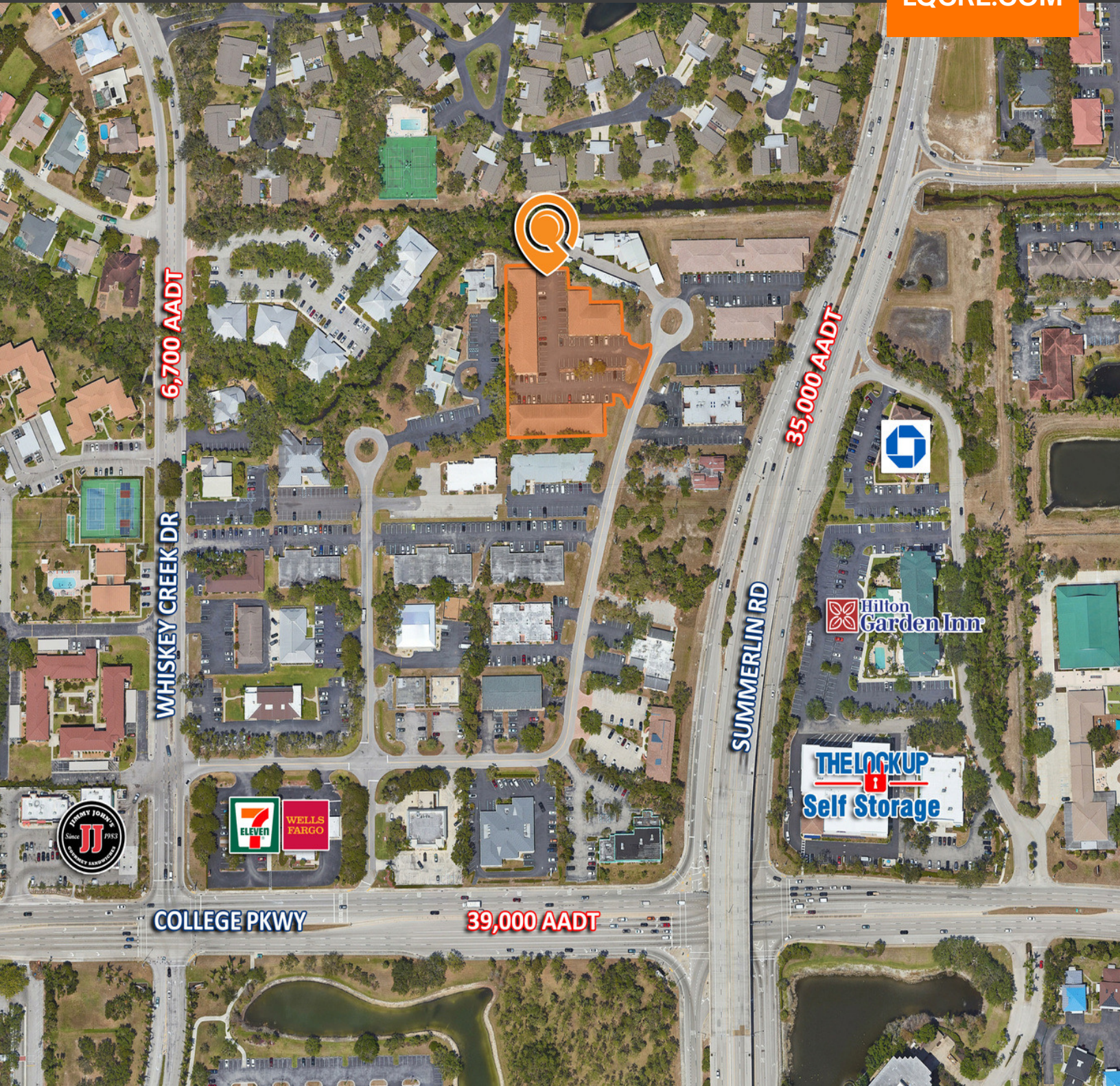
6213-6225 Presidential Court | Fort Myers, FL 33919

Office Units for Lease



LQ Commercial
REAL ESTATE SERVICES

LQCRE.COM



LQ Commercial
REAL ESTATE SERVICES

3555 Kraft Rd #260

Naples, FL 34105

LQCRE.COM

Mike Concilla

Principal

D: 239.275.4922 x405

C: 239.823.9882

mconcilla@lqcre.com

Nick Matson

Associate

D: 239.275.4922 x408

C: 239.351.0137

nmatson@lqcre.com

PRESIDENTIAL CT I

6213-6225 Presidential Court | Fort Myers, FL 33919

Office Units for Lease



LQ Commercial
REAL ESTATE SERVICES

LQCRE.COM

6213 Presidential Ct		3 mi radius		5 mi radius		10 mi radius	
Fort Myers, FL 33919							
Units In Structure (2025)							
Total Units		30,785		73,764		218,452	
1 Detached Unit		11,539	37.5%	32,292	43.8%	116,691	53.4%
1 Attached Unit		3,587	11.7%	6,541	8.9%	18,284	8.4%
2 Units		1,021	3.3%	2,278	3.1%	8,252	3.8%
3 to 4 Units		2,425	7.9%	4,409	6.0%	9,733	4.5%
5 to 9 Units		2,938	9.5%	6,170	8.4%	11,843	5.4%
10 to 19 Units		3,863	12.5%	9,242	12.5%	16,525	7.6%
20 to 49 Units		2,099	6.8%	5,681	7.7%	12,071	5.5%
50 or More Units		2,444	7.9%	4,890	6.6%	12,552	5.7%
Mobile Home or Trailer		843	2.7%	2,194	3.0%	12,046	5.5%
Other Structure		27	-	67	-	455	0.2%
Homes Built By Year (2025)							
Homes Built 2020 or later		1,407	3.6%	3,858	4.1%	11,997	4.3%
Homes Built 2010 to 2019		2,556	6.6%	7,423	7.9%	28,543	10.3%
Homes Built 2000 to 2009		6,660	17.1%	18,494	19.7%	60,778	21.9%
Homes Built 1990 to 1999		4,255	10.9%	10,530	11.2%	30,657	11.0%
Homes Built 1980 to 1989		7,521	19.3%	15,635	16.6%	43,231	15.6%
Homes Built 1970 to 1979		5,252	13.5%	10,218	10.9%	23,463	8.4%
Homes Built 1960 to 1969		2,319	5.9%	5,206	5.5%	13,239	4.8%
Homes Built 1950 to 1959		460	1.2%	1,255	1.3%	3,472	1.2%
Homes Built 1940 to 1949		299	0.8%	730	0.8%	1,993	0.7%
Homes Built Before 1939		56	0.1%	414	0.4%	1,078	0.4%
Median Age of Homes		34.2 yrs		32.5 yrs		30.4 yrs	
Home Values (2025)							
Owner Specified Housing Units		18,346		45,429		144,108	
Home Values \$1,000,000 or More		856	4.7%	2,436	5.4%	7,566	5.2%
Home Values \$750,000 to \$999,999		1,182	6.4%	3,463	7.6%	10,255	7.1%
Home Values \$500,000 to \$749,999		2,264	12.3%	7,795	17.2%	25,751	17.9%
Home Values \$400,000 to \$499,999		2,463	13.4%	7,282	16.0%	23,339	16.2%
Home Values \$300,000 to \$399,999		4,590	25.0%	10,456	23.0%	33,890	23.5%
Home Values \$250,000 to \$299,999		2,189	11.9%	4,395	9.7%	13,197	9.2%
Home Values \$200,000 to \$249,999		1,568	8.5%	2,929	6.4%	9,003	6.2%
Home Values \$175,000 to \$199,999		555	3.0%	1,210	2.7%	3,141	2.2%
Home Values \$150,000 to \$174,999		691	3.8%	1,319	2.9%	3,214	2.2%
Home Values \$125,000 to \$149,999		711	3.9%	1,055	2.3%	2,619	1.8%
Home Values \$100,000 to \$124,999		456	2.5%	999	2.2%	3,396	2.4%
Home Values \$90,000 to \$99,999		38	0.2%	86	0.2%	365	0.3%
Home Values \$80,000 to \$89,999		88	0.5%	193	0.4%	717	0.5%
Home Values \$70,000 to \$79,999		47	0.3%	140	0.3%	602	0.4%
Home Values \$60,000 to \$69,999		58	0.3%	167	0.4%	844	0.6%
Home Values \$50,000 to \$59,999		63	0.3%	184	0.4%	1,129	0.8%
Home Values \$35,000 to \$49,999		97	0.5%	258	0.6%	867	0.6%
Home Values \$25,000 to \$34,999		189	1.0%	366	0.8%	1,504	1.0%
Home Values \$10,000 to \$24,999		133	0.7%	258	0.6%	1,147	0.8%
Home Values Under \$10,000		108	0.6%	437	1.0%	1,562	1.1%
Owner-Occupied Median Home Value		\$355,782		\$396,824		\$395,702	
Renter-Occupied Median Rent		\$1,611		\$1,608		\$1,638	

 **LQ Commercial**
REAL ESTATE SERVICES
3555 Kraft Rd #260
Naples, FL 34105
LQCRE.COM

Mike Concilla

Principal

D: 239.275.4922 x405

C: 239.823.9882

mconcilla@lqcre.com

Nick Matson

Associate

D: 239.275.4922 x408

C: 239.351.0137

nmatson@lqcre.com