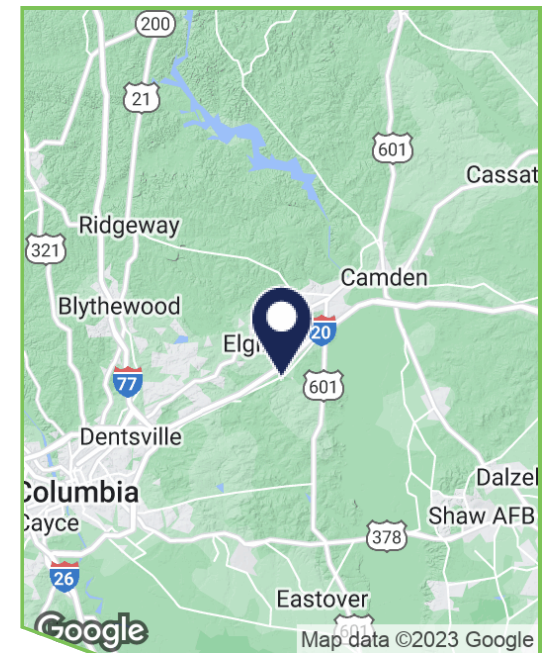
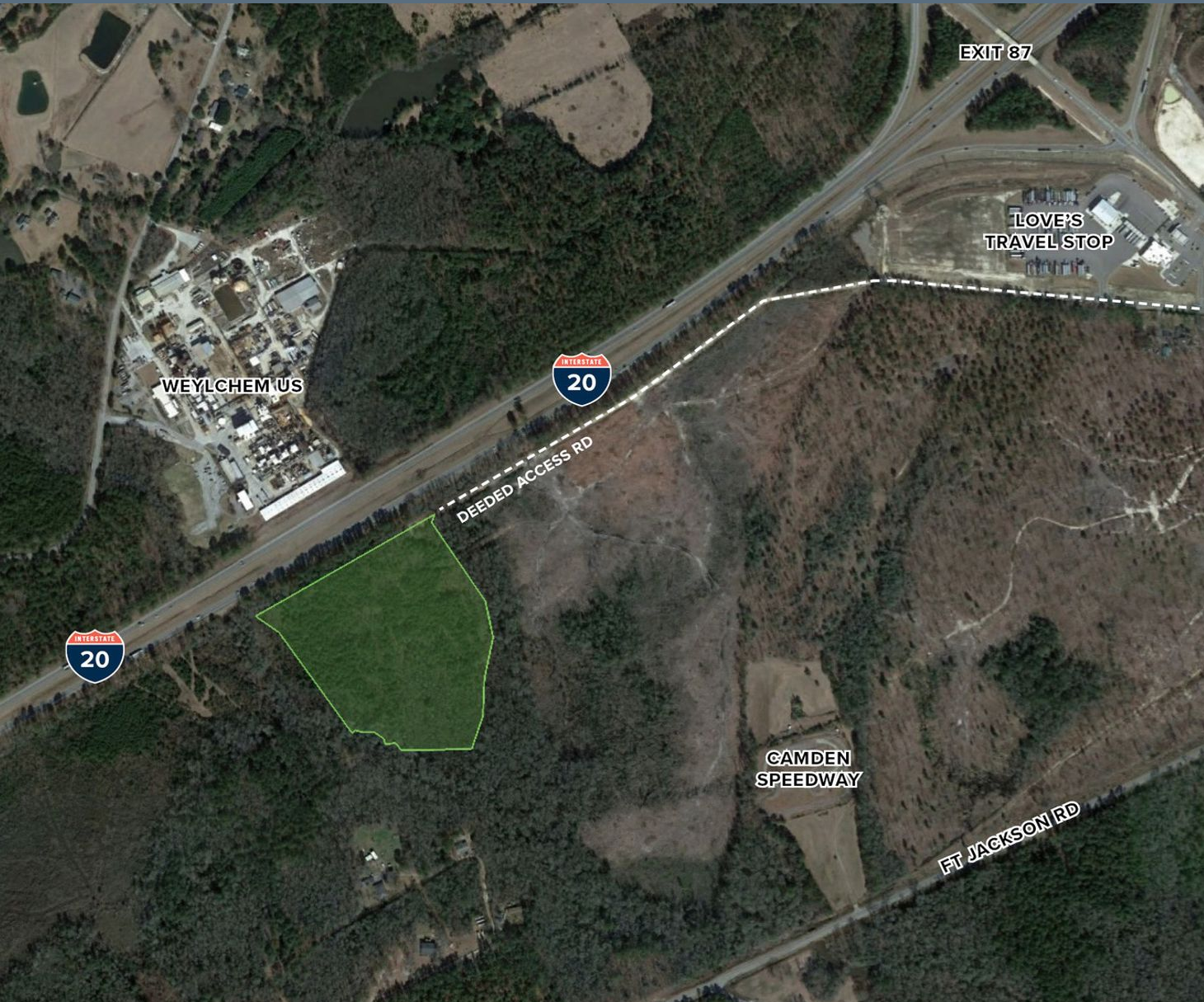


681B White Pond Rd, Elgin, SC 29045

For Sale
\$100,000

±28 Acres Available

- Deeded access from White Pond Road (\$250,000 value)
- Zoning: B-2, Kershaw County
- Great visibility from I-20 for future commercial use
- Site can be easily accessed within minutes from the White Pond Road exit of I-20
- Located 25 minutes from Downtown Columbia
- Sale Price: \$100,000



TRINITY
PARTNERS

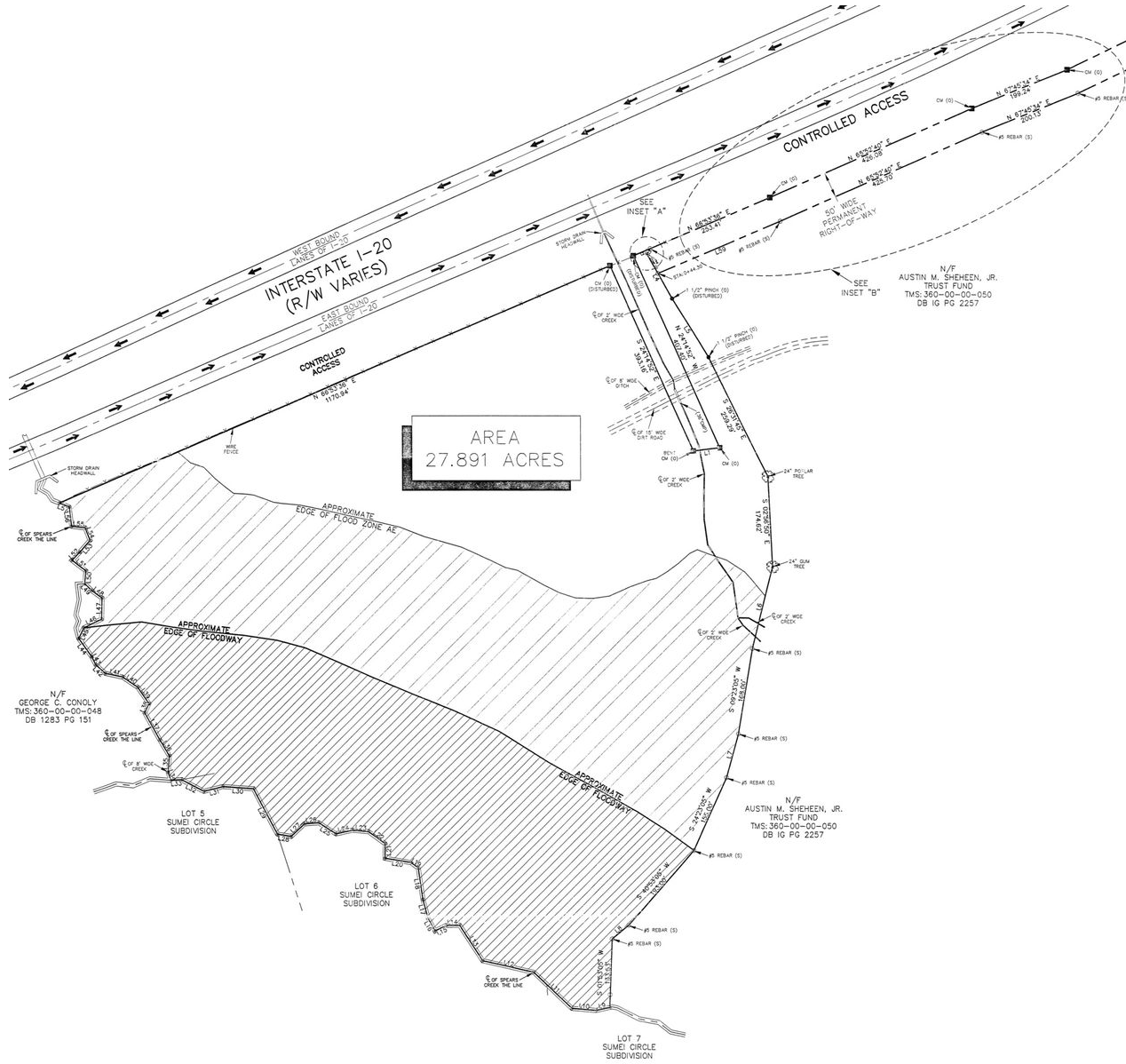
Nick Stomski, SIOR / 803.567.1447 / nstomski@trinity-partners.com
John Coleman / 803.567.1876 / jcoleman@trinity-partners.com

The information contained herein was obtained from sources believed reliable; however, Trinity Partners makes no guarantees, warranties, or representations as to the completeness or accuracy thereof. The presentation of this property is submitted subject to errors, omissions, changes of price or conditions prior to sale or lease, or withdrawal without notice.

1501 MAIN STREET SUITE 410
COLUMBIA, SC 29201
TRINITY-PARTNERS.COM

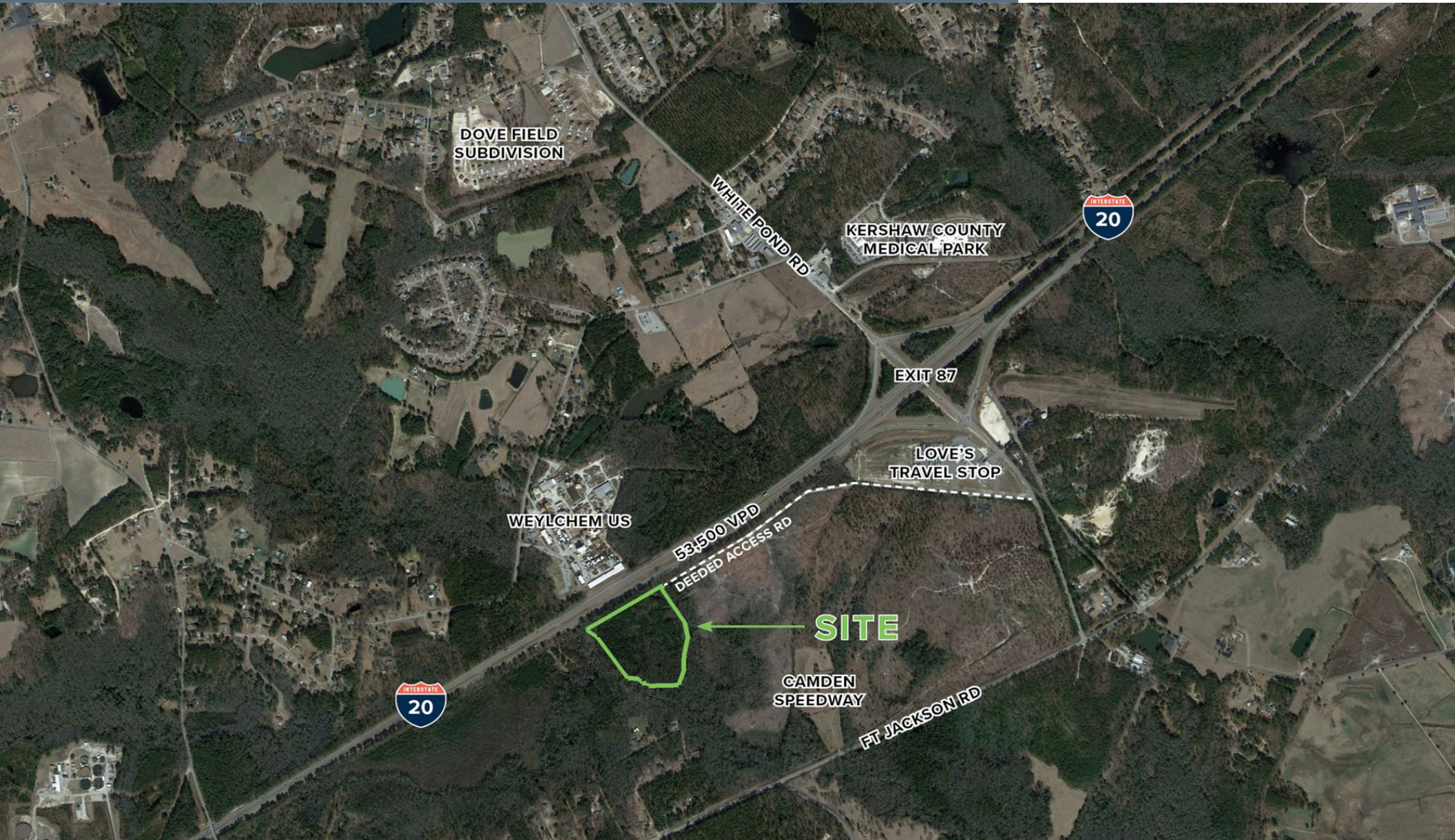
681B White Pond Rd, Elgin, SC 29045

For Sale
\$100,000



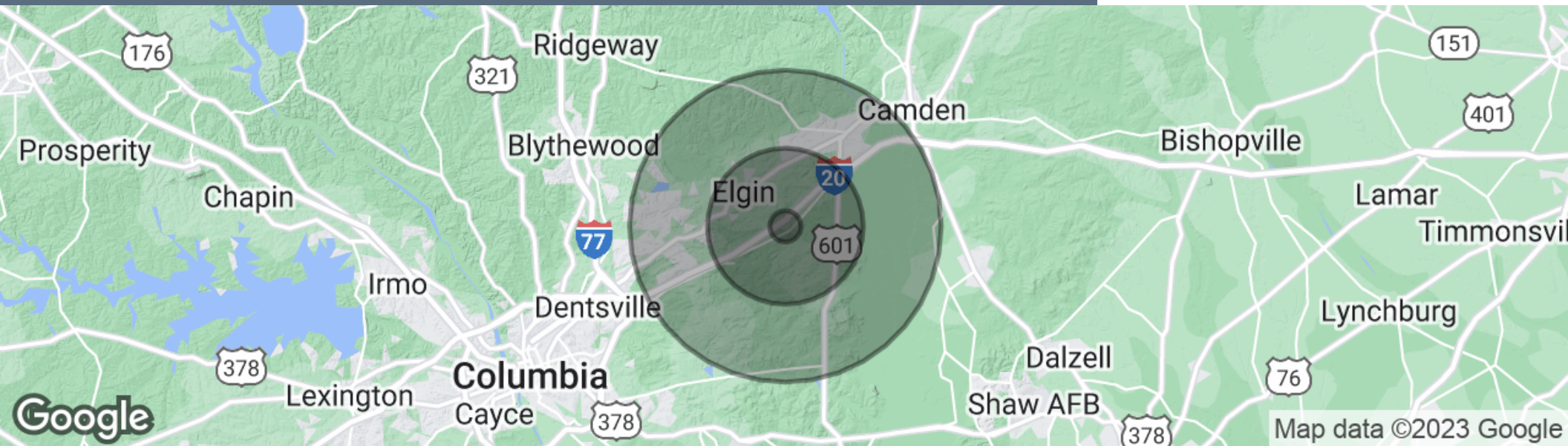
681B White Pond Rd, Elgin, SC 29045

For Sale
\$100,000



681B White Pond Rd, Elgin, SC 29045

For Sale
\$100,000



Population

	1 Mile	5 Miles	10 Miles
Total Population	667	19,780	105,051
Average Age	38.6	40.0	39.4
Average Age (Male)	41.1	40.1	38.2
Average Age (Female)	36.6	39.4	39.8

Households & Income

	1 Mile	5 Miles	10 Miles
Total Households	272	7,925	43,437
# of Persons per HH	2.5	2.5	2.4
Average HH Income	\$67,242	\$73,939	\$76,930
Average House Value	\$136,569	\$184,958	\$194,036

** Demographic data derived from 2020 ACS - US Census*