

SUBLEASE



OFFICE

9011 N MERIDIAN ST, STE 200



9011 N MERIDIAN ST, STE 200, INDIANAPOLIS, IN 46260

PROPERTY OVERVIEW

Located on North Meridian St with easy access to I-465. Offers easy access to Downtown Indy and Carmel. Multiple amenities located near the property including dining, shopping, and fitness.

PROPERTY HIGHLIGHTS

- Great location located off of North Meridian St
- Move-in ready
- Spacious layout with a large open area
- Easy access to I-465
- 5/1,000 SF Parking Ratio

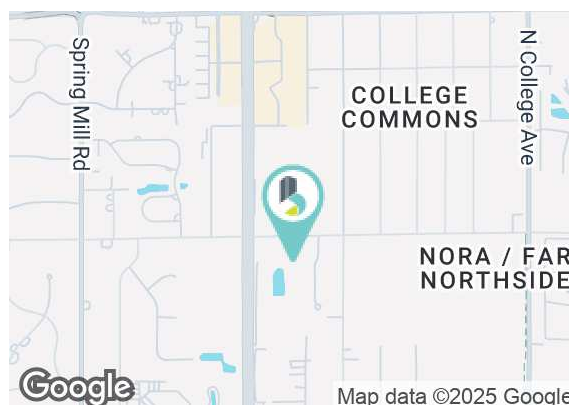
SUBLEASE
RATE

\$19.00 SF/YR
(GROSS)

Available SF: 2,361 SF

Lot Size: 3.59 Acres

Building Size: 23,972 SF



BRADLEY COMPANY

310 E. 96th St., Suite 100
Indianapolis, IN 46240
317.663.6000

KONNOR HAEHL

Broker
317.989.7445
khaehl@bradleyco.com

JONATHAN M. HARDY, CCIM

Senior Managing Director | Principal
317.490.5702
jmhardy@bradleyco.com



BRADLEYCO.COM

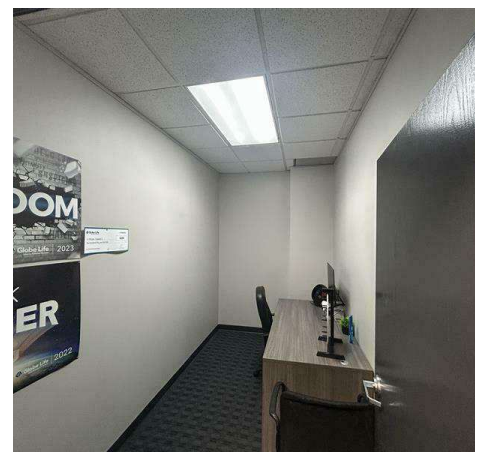
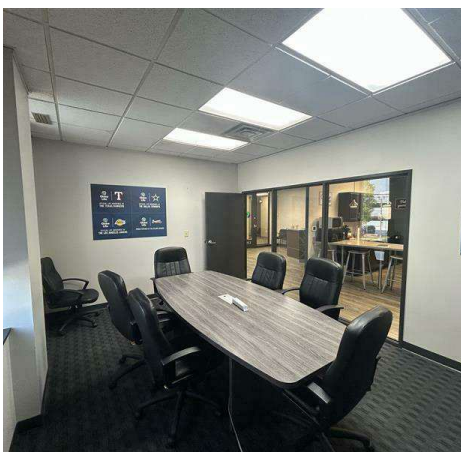
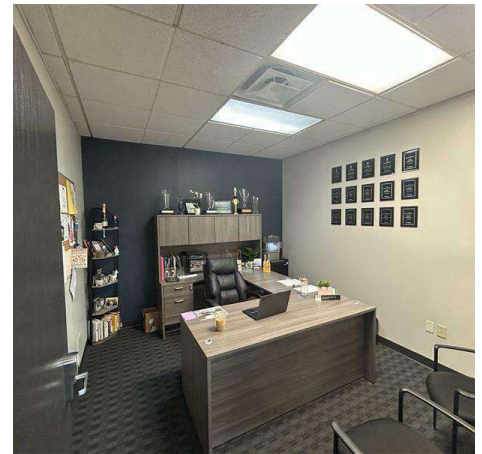
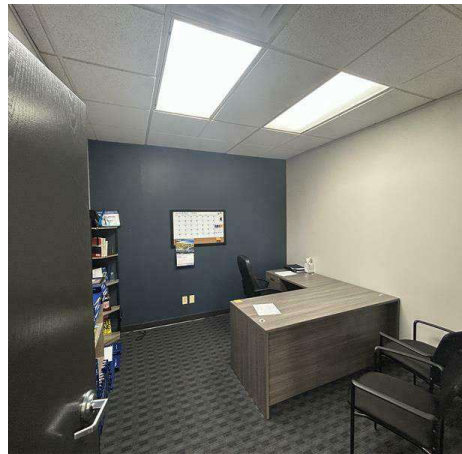
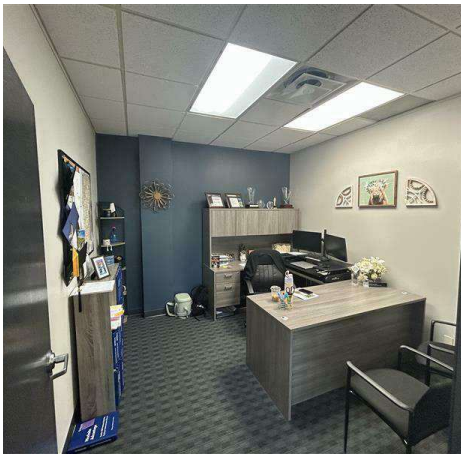
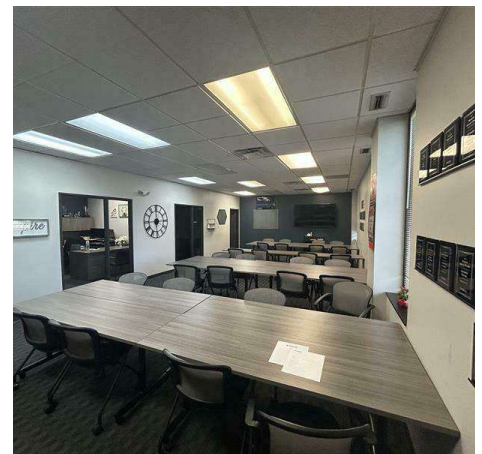
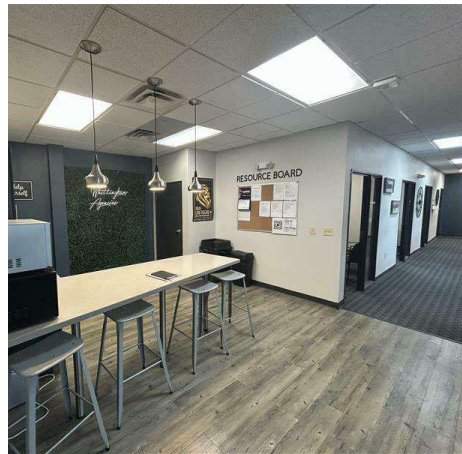
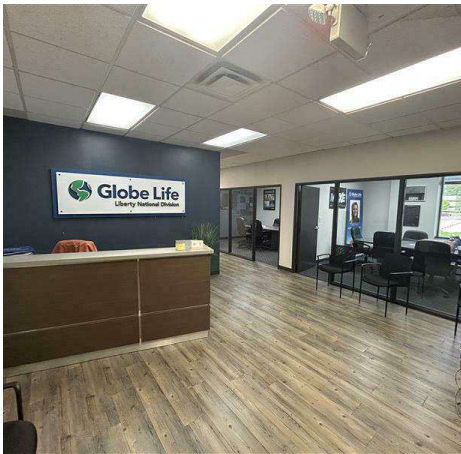


INTERIOR PHOTOS

9011 N MERIDIAN ST, STE 200, INDIANAPOLIS, IN 46260

SUBLEASE

OFFICE



KONNOR HAEHL
Broker
317.989.7445
khaehl@bradleyco.com

JONATHAN M. HARDY, CCIM
Senior Managing Director | Principal
317.490.5702
jmhardy@bradleyco.com

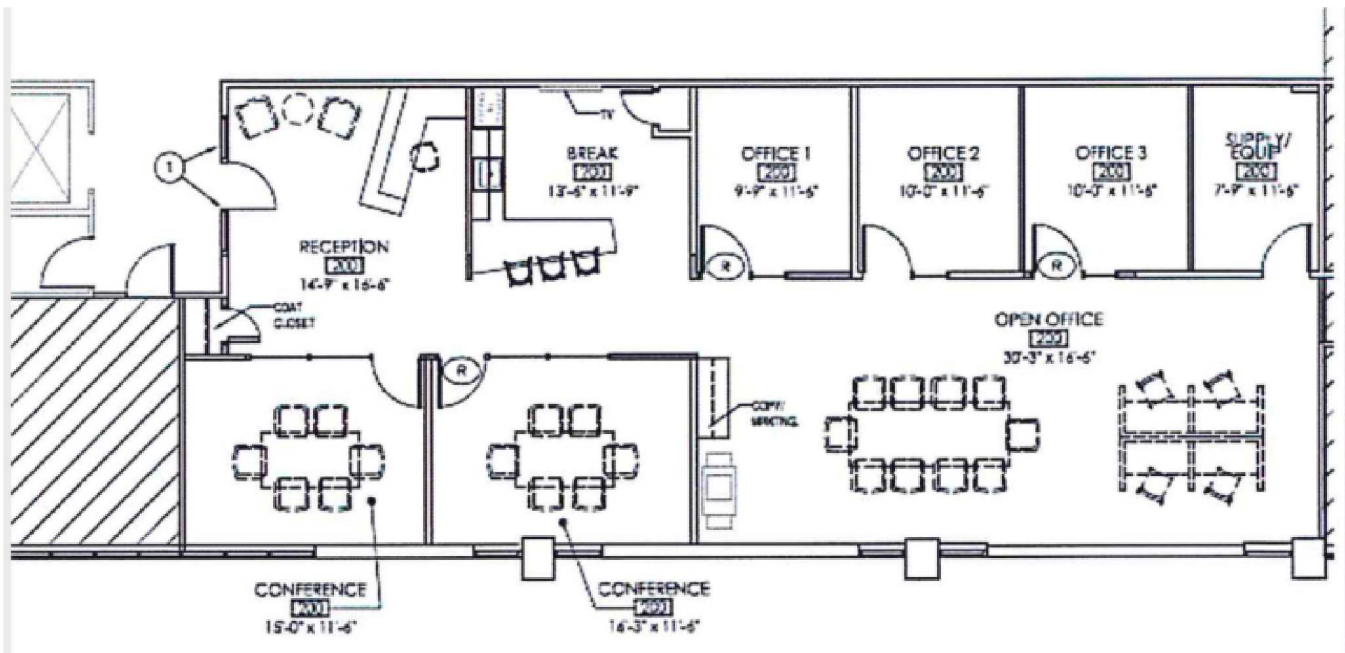


9011 N MERIDIAN ST, STE 200, INDIANAPOLIS, IN 46260

SUBLEASE

OFFICE

9011 N Meridian
Suite 200 – 2,361 SF



KONNOR HAEHL
Broker
317.989.7445
khaehl@bradleyco.com

JONATHAN M. HARDY, CCIM
Senior Managing Director | Principal
317.490.5702
jmhardy@bradleyco.com