

# 2321-2323 San Pablo Avenue

## OAKLAND, CA 94612



### Property Description

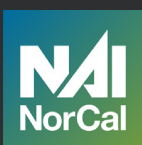
Poised for groundbreaking development, the property at 2323 San Pablo Avenue represents a stellar investment in West Oakland's future. This fully entitled project encompasses a five-story, mixed-use building with 16 modern residential units and convenient ground-floor retail space, designed by the renowned Dinar and Associates. With a gross building area (GBA) of 23,562 square feet and a lot size of 5,489 square feet, the development offers a mix of one and two-bedroom homes, including affordable options, and is bolstered by significant tax incentives. This development promises a vibrant living and commercial space in a rapidly growing neighborhood, making it a prime opportunity for those looking to invest in Oakland's revitalization.

### Offering Summary

<b>Sale Price:</b>	\$1,195,000
<b>Number of Units:</b>	17
<b>Building Size:</b>	23,562 SF
<b>Lot Size:</b>	5,489 SF



Click/Scan for  
Offering Memorandum



**James Kilpatrick**  
President  
james@nainorcal.com  
510.290.9647  
CalDRE #01277022

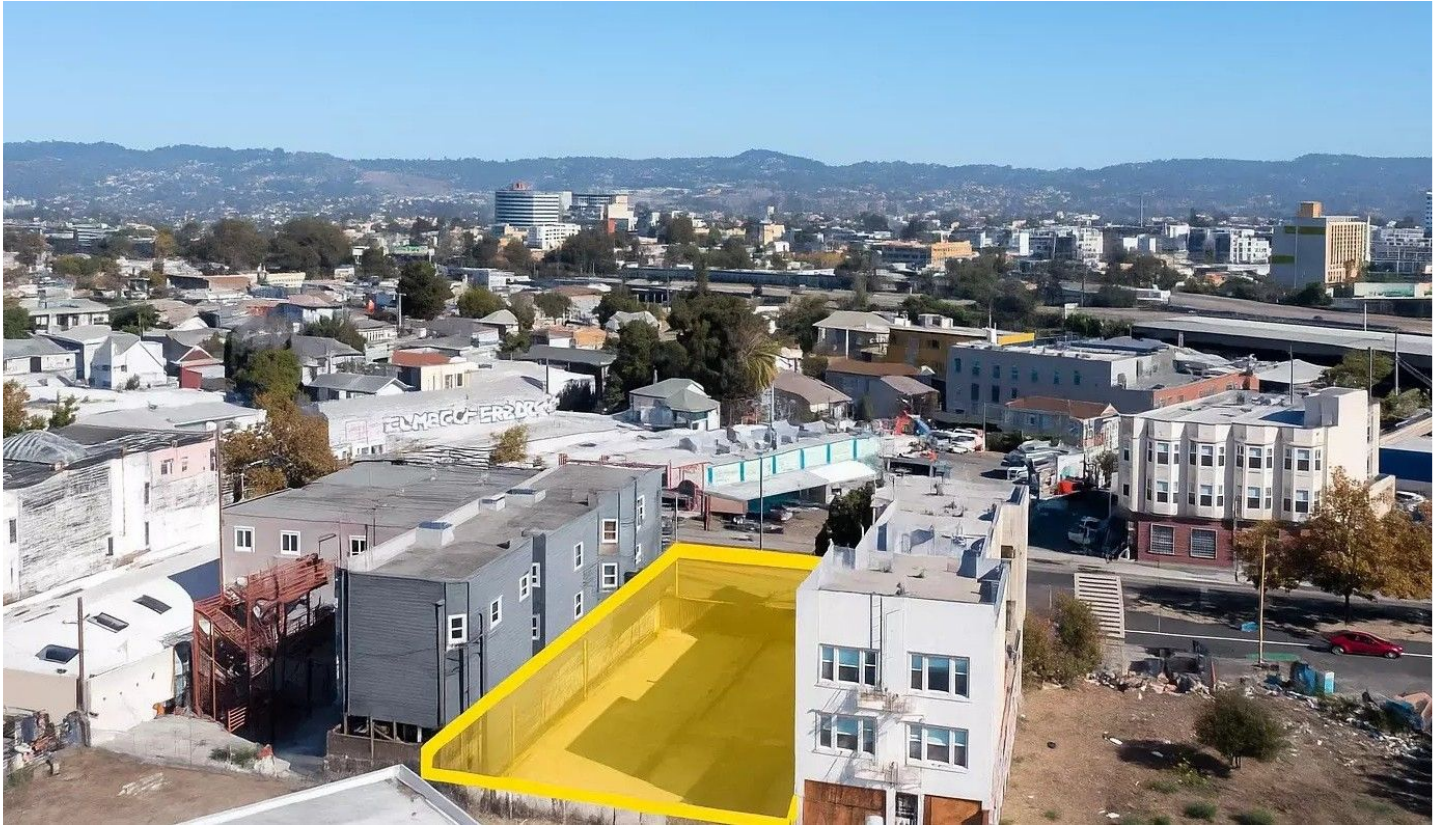
**Seth Hubbert**  
Investment Advisor  
shubbert@nainorcal.com  
510.332.9389  
CalDRE #02158135

**Damon Gerstein**  
Investment Advisor  
dgerstein@nainorcal.com  
415.465.4907  
CalDRE #02268840

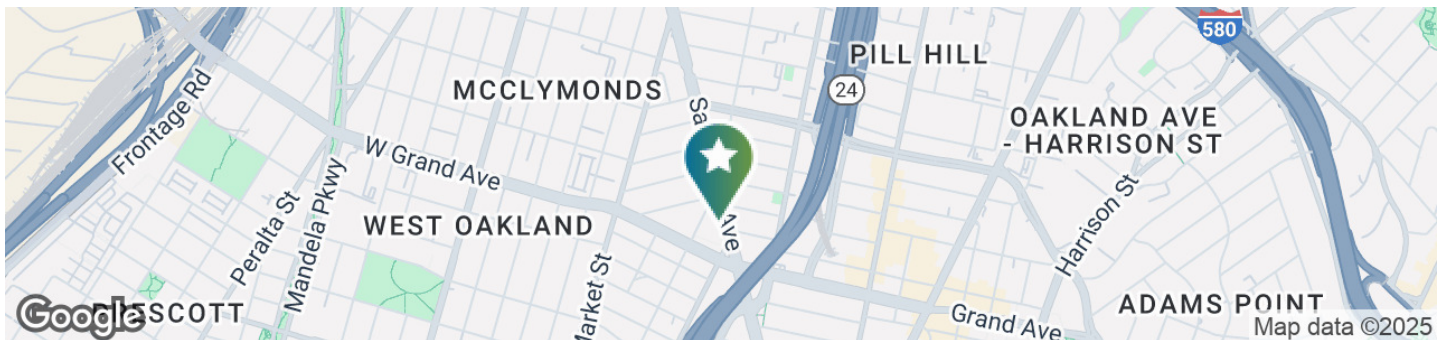
**Tim Marshall**  
Investment Advisor  
tmarshall@nainorcal.com  
408.502.5363  
CalDRE #02325164



## Additional Photos



## Location Information



## For More Information

### James Kilpatrick

President  
james@nainorcal.com  
510.290.9647  
CalDRE #01277022

### Seth Hubbert

Investment Advisor  
shubbert@nainorcal.com  
510.332.9389  
CalDRE #02158135

### Damon Gerstein

Investment Advisor  
dgerstein@nainorcal.com  
415.465.4907  
CalDRE #02268840

### Tim Marshall

Investment Advisor  
tmarshall@nainorcal.com  
408.502.5363  
CalDRE #02325164