

RETAIL FOR LEASE

3725 & 3745 BANKS ROAD

RALEIGH, NC 27603



**NAI** TRI PROPERTIES

# SITE FEATURES - NORTH BUILDING

---

**ADDRESS:** Banks Road Business Park - North Bldg  
3725 Banks Road  
Raleigh, NC 27603

**RENTAL RATE:** Call broker for pricing

---

**BUILDING SIZE:** 12,000 SF

**PARKING:** 4/1,000 SF

---

**AVAILABLE SPACE:** 2,000 RSF Minimum - 8,000 RSF Maximum

**FEATURES:** Free standing Building  
12,000 SF Bay or 6 - 2,000 SF Bays

---

**ZONING:** GC-CZD (General Commercial Conditional Zoning District)

**DELIVERY:** July 2026

---



## CONTACT

HUNT WYCHE | 919.740.4406 | [hwyche@triprop.com](mailto:hwyche@triprop.com)

All information provided herein is from sources deemed reliable. However, all information is subject to verification. NAI Tri Properties does not independently verify nor warrant the accuracy of the information.



# SITE FEATURES - SOUTH BUILDING

**ADDRESS:** Banks Road Business Park - South Bldg  
3745 Banks Road  
Raleigh, NC 27603

**RENTAL RATE:** Call broker for pricing

**BUILDING SIZE:** 12,000 SF

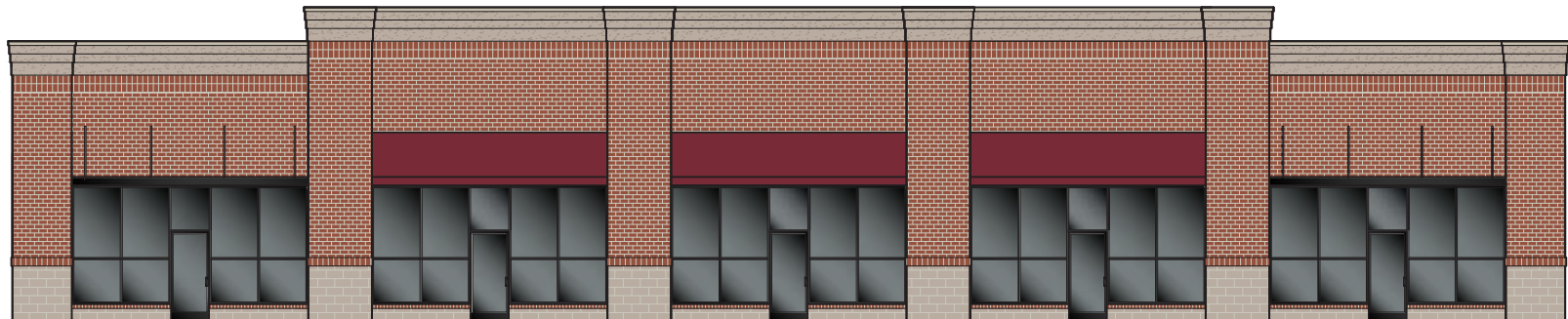
**PARKING:** 4/1,000 SF

**AVAILABLE SPACE:** 2,400 RSF Minimum - 7,200 RSF Maximum

**FEATURES:** Free standing Building  
12,000 SF Bay or 5 - 2,400 SF Bays

**ZONING:** GC-CZD (General Commercial Conditional Zoning District)

**DELIVERY:** July 2026



## CONTACT

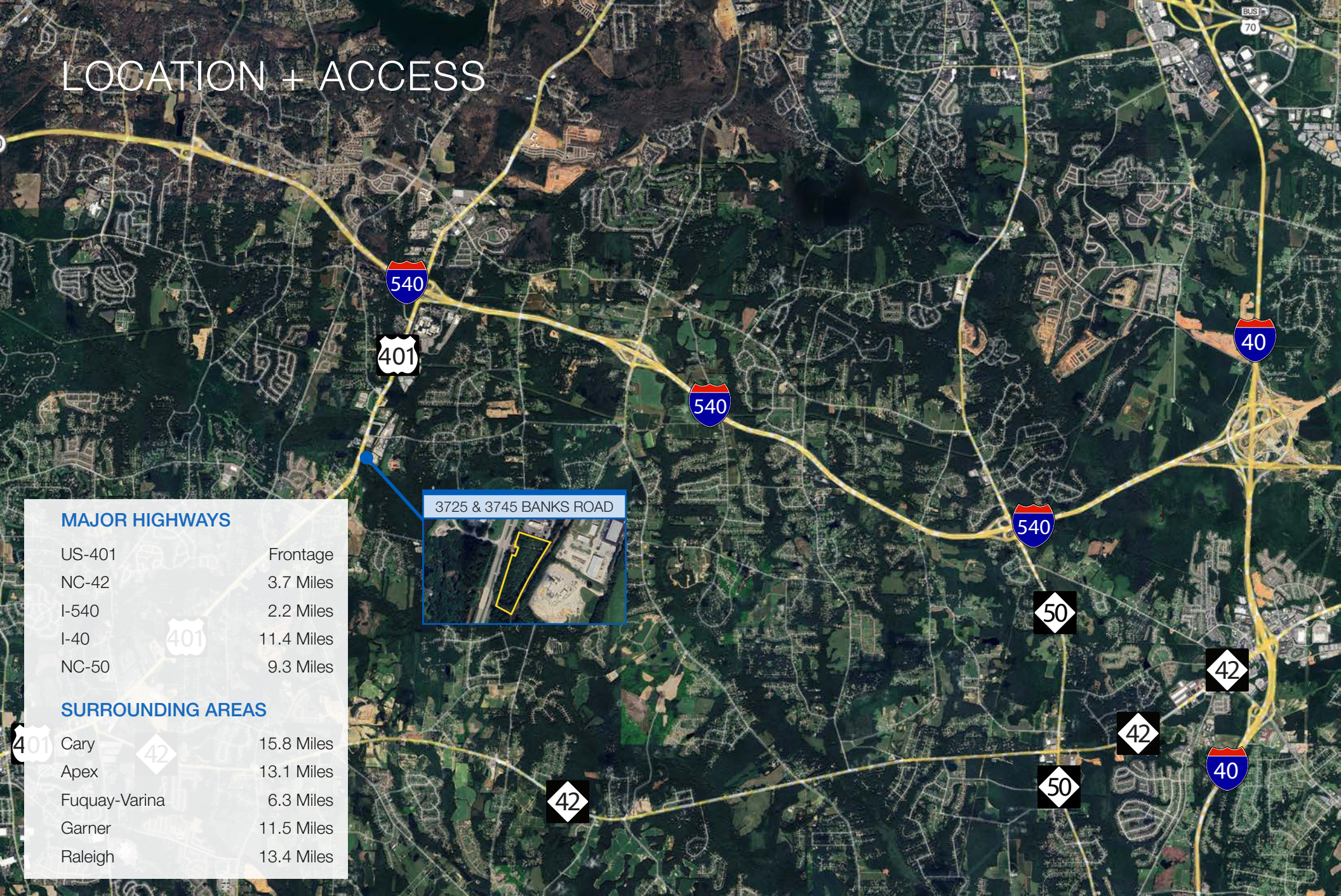
HUNT WYCHE | 919.740.4406 | [hwyche@triprop.com](mailto:hwyche@triprop.com)

All information provided herein is from sources deemed reliable. However, all information is subject to verification. NAI Tri Properties does not independently verify nor warrant the accuracy of the information.





# LOCATION + ACCESS



## MAJOR HIGHWAYS

US-401	Frontage
NC-42	3.7 Miles
I-540	2.2 Miles
I-40	11.4 Miles
NC-50	9.3 Miles

## SURROUNDING AREAS

Cary	15.8 Miles
Apex	13.1 Miles
Fuquay-Varina	6.3 Miles
Garner	11.5 Miles
Raleigh	13.4 Miles

3725 & 3745 BANKS ROAD

## CONTACT

HUNT WYCHE | 919.740.4406 | [hwyche@triprop.com](mailto:hwyche@triprop.com)

All information provided herein is from sources deemed reliable. However, all information is subject to verification. NAI Tri Properties does not independently verify nor warrant the accuracy of the information.

AERIAL

KING'S GRANT COMMONS - 3 MILES



BANKS ROAD PARK



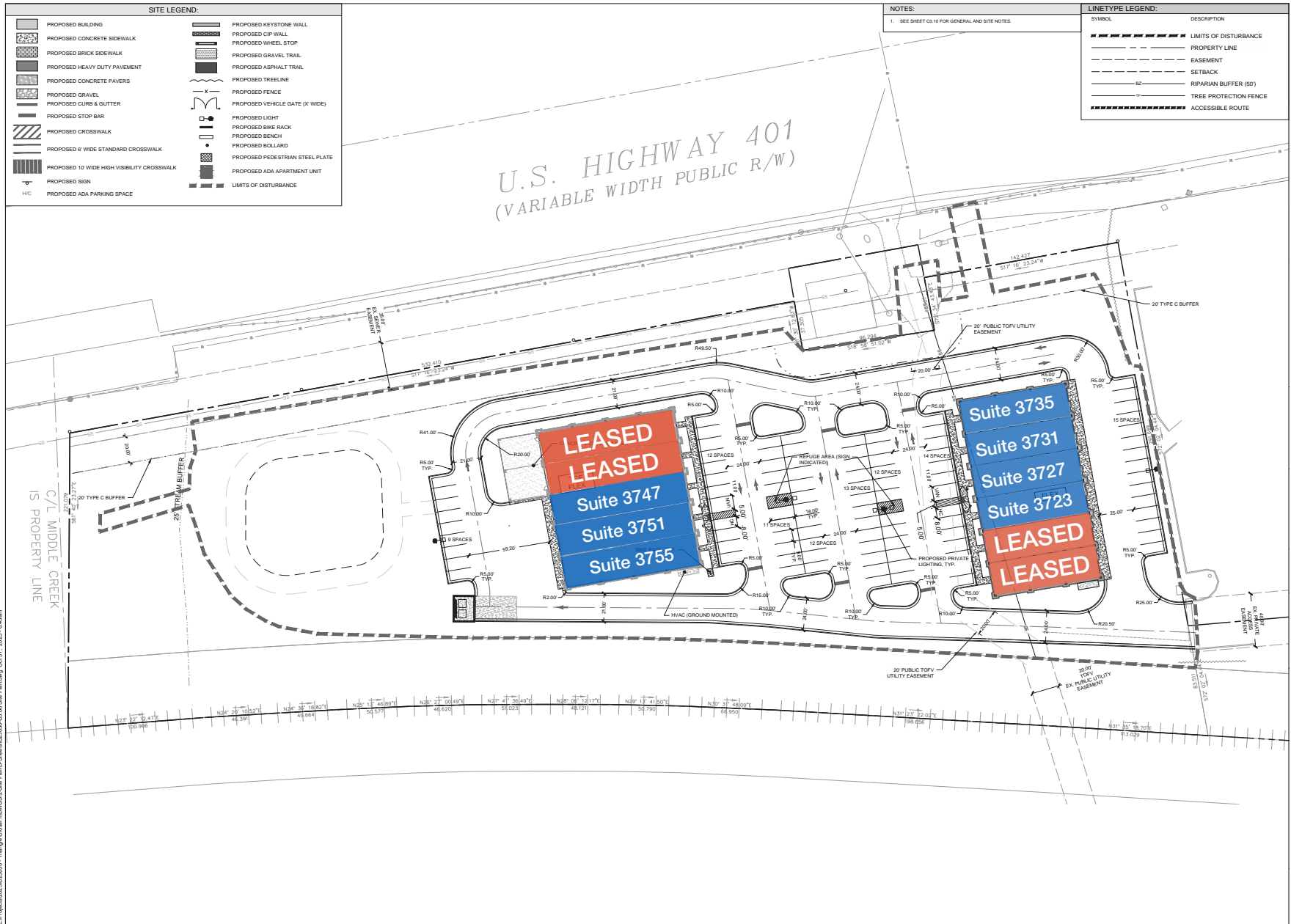
CONTACT

HUNT WYCHE | 919.740.4406 | hwyche@triprop.com

All information provided herein is from sources deemed reliable. However, all information is subject to verification. NAI Tri Properties does not independently verify nor warrant the accuracy of the information.



# SITE PLAN



L:\Projects\2022\CD-20000 - Triprop-Casualty\DWG\CD-20000-CD-10-20a-Planning Oct 21 - 2024 - 6.63am

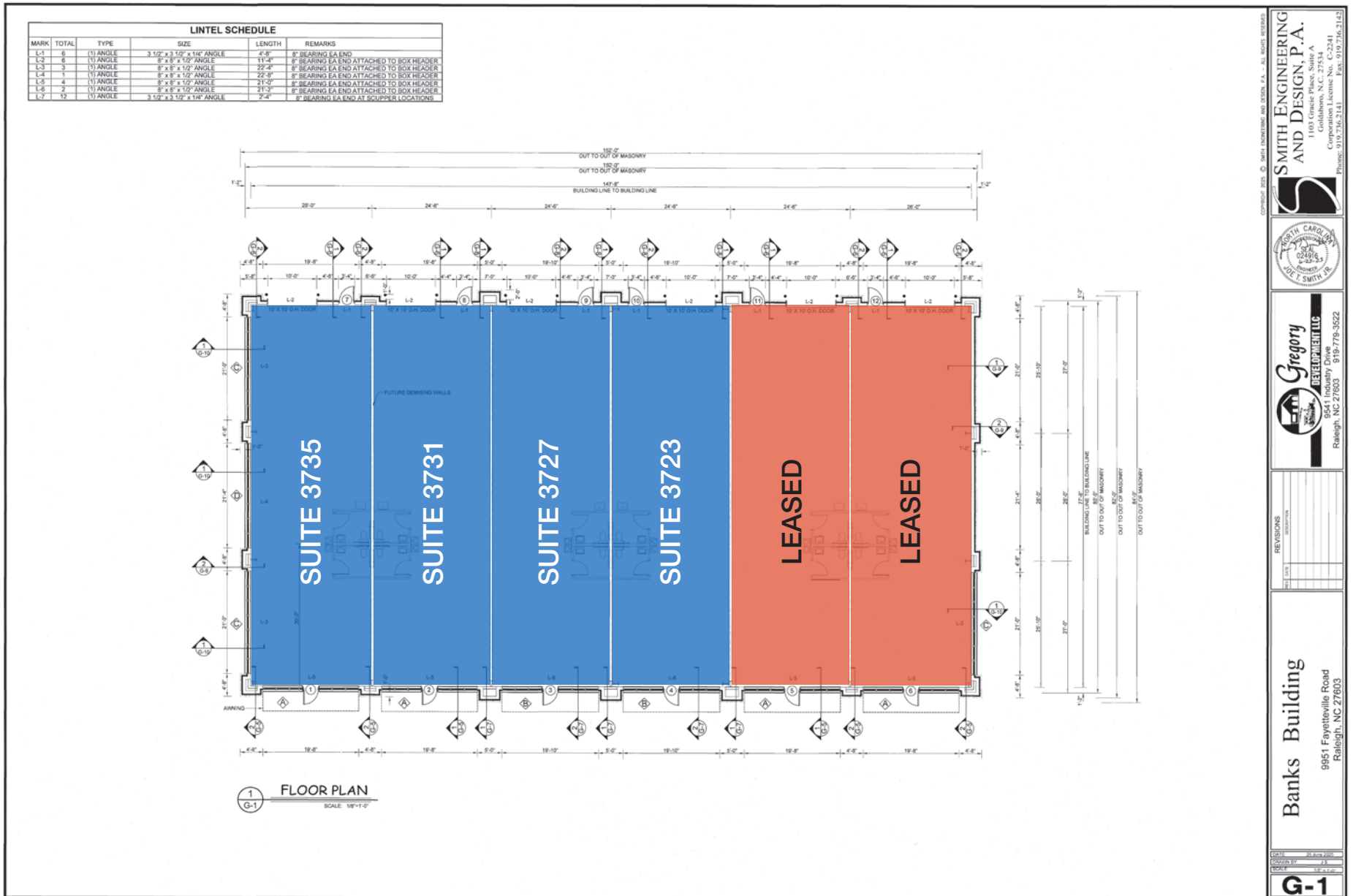
## CONTACT

HUNT WYCHE | 919.740.4406 | hwyche@triprop.com

All information provided herein is from sources deemed reliable. However, all information is subject to verification. NAI Tri Properties does not independently verify nor warrant the accuracy of the information.



# FLOOR PLAN - NORTH BUILDING



SMITH ENGINEERING AND DESIGN, P.A.  
1100 GARDNER ROAD, SUITE 200  
RALEIGH, NC 27604  
CORPORATION LICENSE NO. C-2241  
PHONE: 919.736.2141 FAX: 919.736.2142

Gregory DEVELOPMENTAL  
9541 Industry Drive  
Raleigh, NC 27603 919-779-3522

Banks Building  
9951 Fayetteville Road  
Raleigh, NC 27603

**G-1**

## CONTACT

HUNT WYCHE | 919.740.4406 | hwyche@triprop.com

All information provided herein is from sources deemed reliable. However, all information is subject to verification. NAI Tri Properties does not independently verify nor warrant the accuracy of the information.



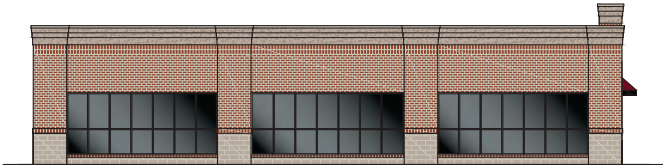


# NORTH BUILDING ELEVATIONS



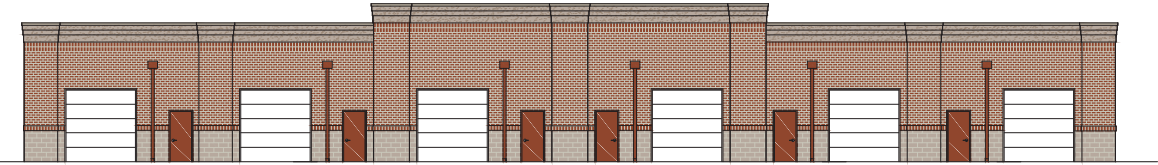
**SOUTH ELEVATION**

SCALE: 1/8" = 1'-0"



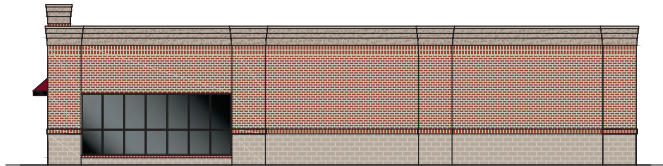
**WEST ELEVATION**

SCALE: 1/8" = 1'-0"



**NORTH ELEVATION**

SCALE: 1/8" = 1'-0"



**EAST ELEVATION**

SCALE: 1/8" = 1'-0"

## CONTACT

HUNT WYCHE | 919.740.4406 | hwyche@triprop.com

All information provided herein is from sources deemed reliable. However, all information is subject to verification. NAI Tri Properties does not independently verify nor warrant the accuracy of the information.

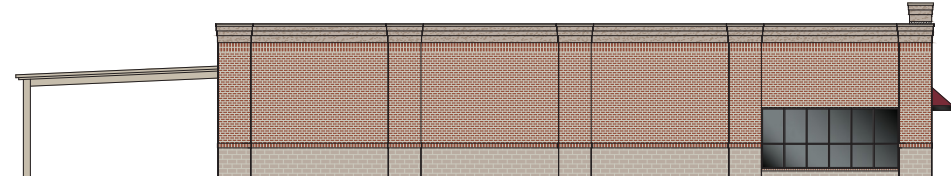


# SOUTH BUILDING ELEVATIONS



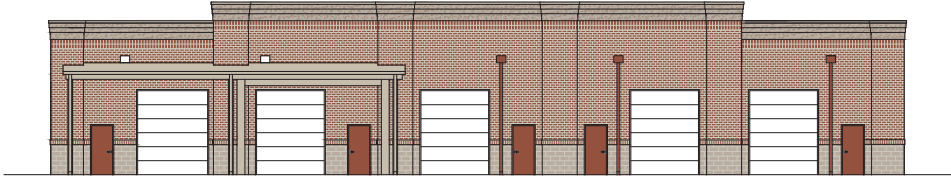
**NORTH ELEVATION**

SCALE: 1/8" = 1'-0"



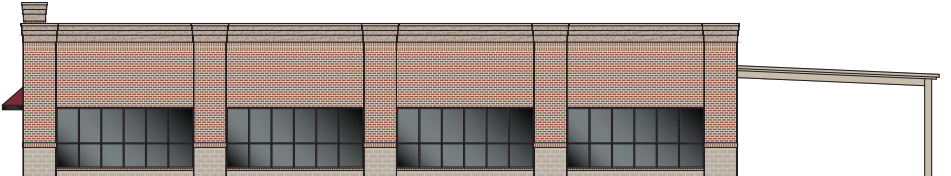
**EAST ELEVATION**

SCALE: 1/8" = 1'-0"



**SOUTH ELEVATION**

SCALE: 1/8" = 1'-0"



**WEST ELEVATION**

SCALE: 1/8" = 1'-0"

## CONTACT

HUNT WYCHE | 919.740.4406 | hwyche@triprop.com

All information provided herein is from sources deemed reliable. However, all information is subject to verification. NAI Tri Properties does not independently verify nor warrant the accuracy of the information.





## CONTACT

HUNT WYCHE | 919.740.4406 | [hwyche@triprop.com](mailto:hwyche@triprop.com)

All information provided herein is from sources deemed reliable. However, all information is subject to verification. NAI Tri Properties does not independently verify nor warrant the accuracy of the information.

**NAI** TRI PROPERTIES

NORTH BUILDING



NORTH BUILDING



SOUTH BUILDING



SOUTH BUILDING



**CONTACT**

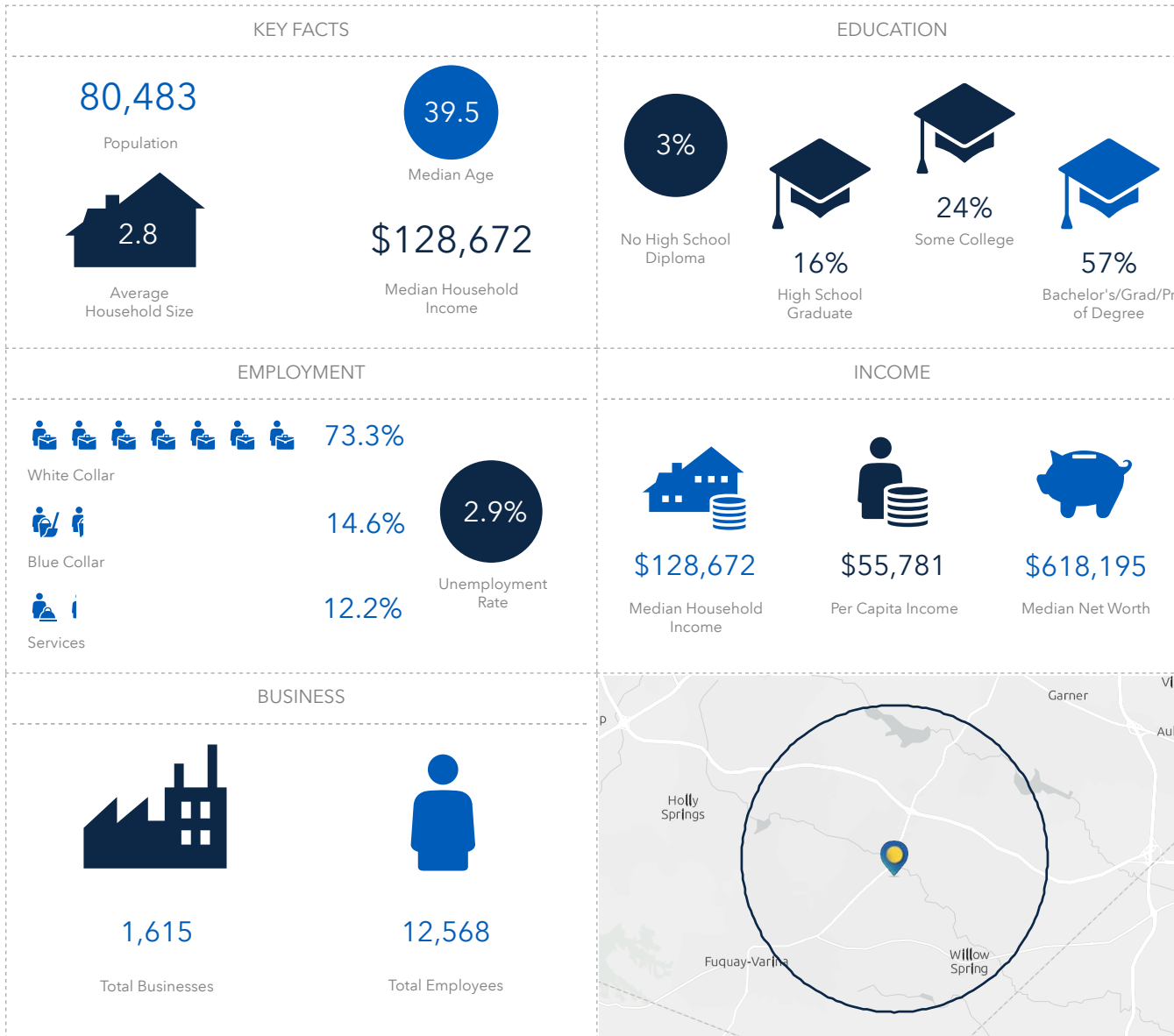
HUNT WYCHE | 919.740.4406 | [hwyche@triprop.com](mailto:hwyche@triprop.com)

All information provided herein is from sources deemed reliable. However, all information is subject to verification. NAI Tri Properties does not independently verify nor warrant the accuracy of the information.



# DEMOGRAPHICS

## 5 MILE



### CONTACT

HUNT WYCHE | 919.740.4406 | hwyche@triprop.com

All information provided herein is from sources deemed reliable. However, all information is subject to verification. NAI Tri Properties does not independently verify nor warrant the accuracy of the information.