

// PROPERTY SUMMARY



PROPERTY DESCRIPTION

Fantastic and affordable office space for lease on lower level of 4-plex on Spokane's North Bank. Just blocks from the new ONE Spokane Sports Stadium and Downtown.

PROPERTY HIGHLIGHTS

- Modified Gross: Tenant pays pro rata share of water, sewer, garbage & electricity (approx. \$215/mo)
- 5 offices, large reception area, bathroom, breakroom with adjacent shower & sink, and storage closet.
- Free Onsite Parking
- Secure Building with 24/7 Security Camera Monitoring.
- Close to Riverfront Park, Kendall Yards, Spokane Arena, The Podium and Spokane County Campus

SPACES	LEASE RATE	SPACE SIZE
Suite 2	\$1,100 per month	1,100 SF

DEMOGRAPHICS	1 MILE	3 MILES	5 MILES
Total Households	5,777	55,013	111,594
Total Population	13,737	125,763	260,663
Average HH Income	\$37,862	\$46,285	\$50,573

// PRESENTED BY:

STEPHEN BARBIERI

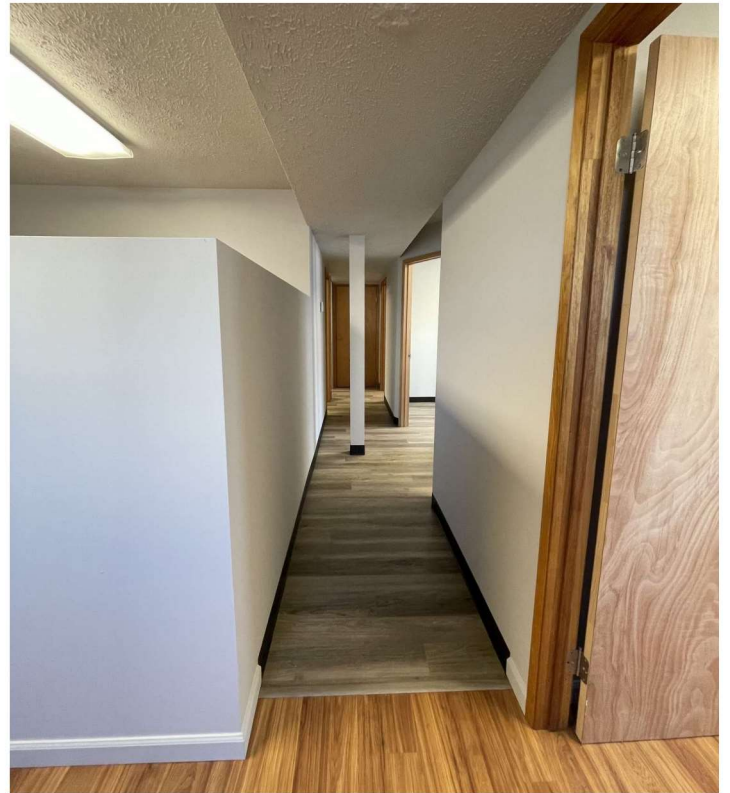
COMMERCIAL LEASING & SALES MANAGER
509.344.4919
SBARBIERI@G-B.COM

KATIE BOHR

COMMERCIAL BROKER & LEASING MANAGER
509.344.4906
KATIE.BOHR@G-B.COM



// ADDITIONAL PHOTOS



// PRESENTED BY:

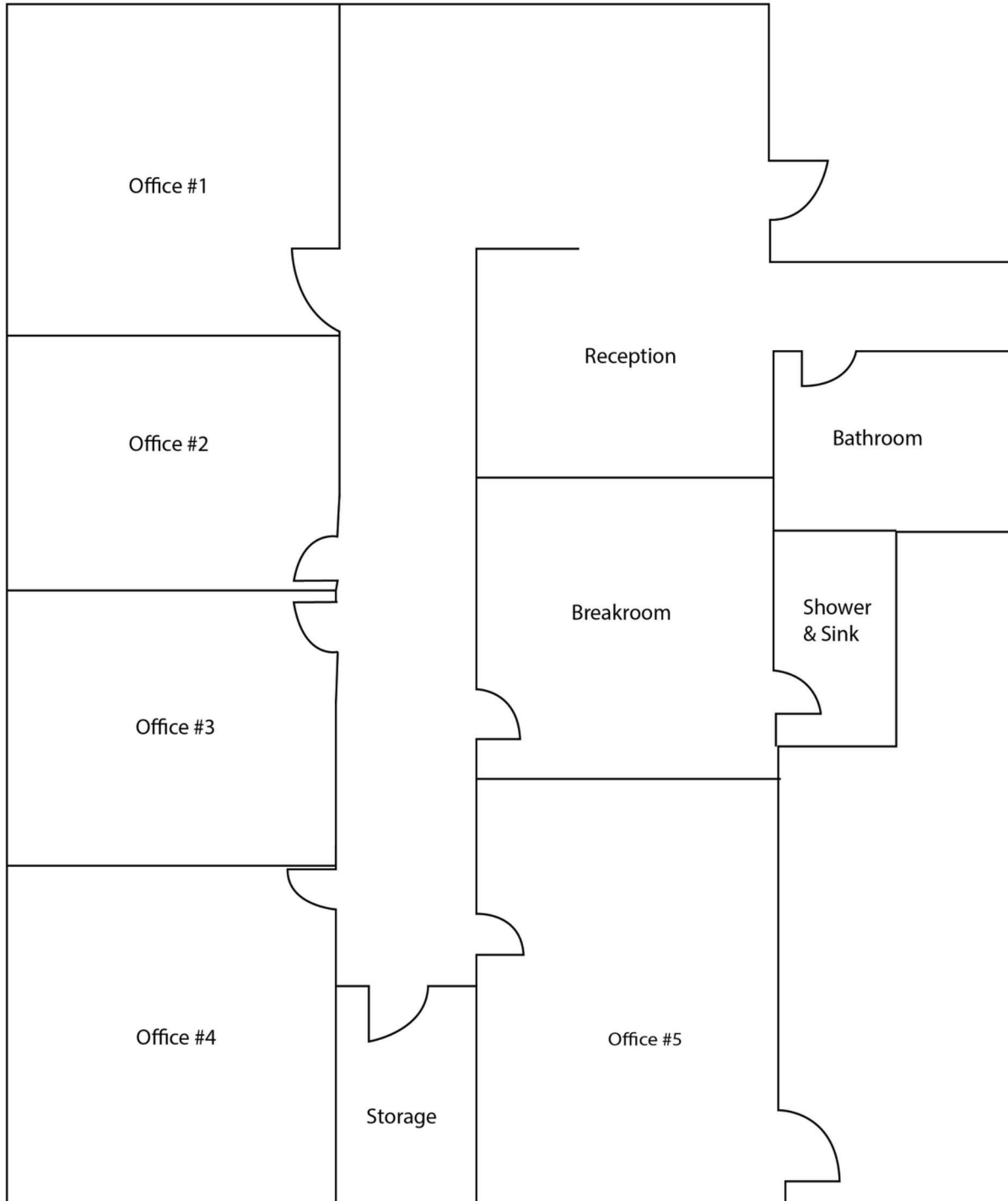
STEPHEN BARBIERI
COMMERCIAL LEASING & SALES MANAGER
509.344.4919
SBARBIERI@G-B.COM

KATIE BOHR
COMMERCIAL BROKER & LEASING MANAGER
509.344.4906
KATIE.BOHR@G-B.COM



// FLOOR PLAN

601 West Maxwell Ave
Lower level Suite 2 Floor Plan
Approximately 1,100 SF



// PRESENTED BY:

STEPHEN BARBIERI

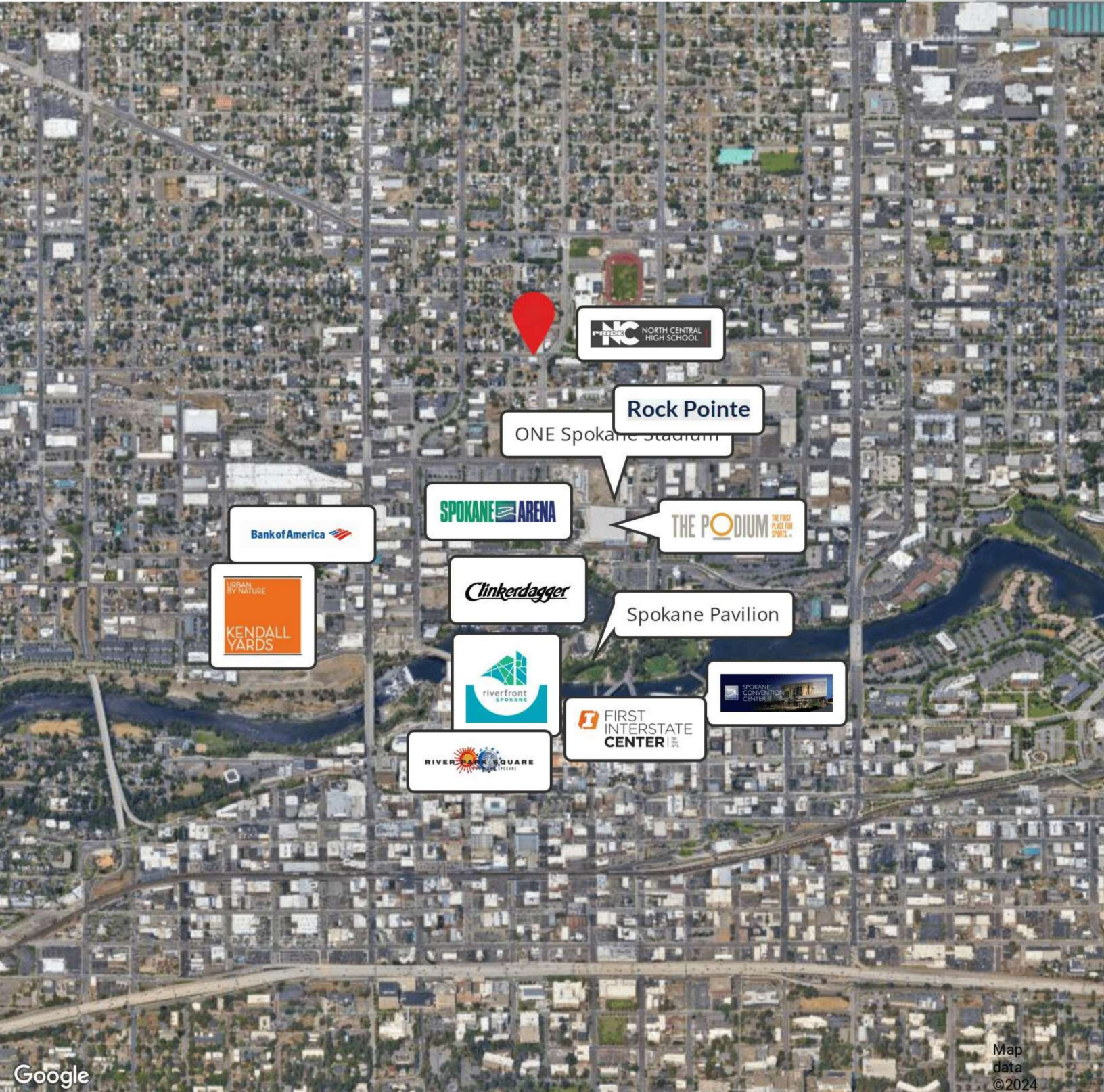
COMMERCIAL LEASING & SALES MANAGER
509.344.4919
SBARBIERI@G-B.COM

KATIE BOHR

COMMERCIAL BROKER & LEASING MANAGER
509.344.4906
KATIE.BOHR@G-B.COM



// RETAILER MAP



Google

Map
data
©2024

// PRESENTED BY:

STEPHEN BARBIERI
COMMERCIAL LEASING & SALES MANAGER
509.344.4919
SBARBIERI@G-B.COM

KATIE BOHR
COMMERCIAL BROKER & LEASING MANAGER
509.344.4906
KATIE.BOHR@G-B.COM

