

LOWER PRICE - ASKING \$795,000

2306 & 2310 Church Road, Cherry Hill, NJ 08002



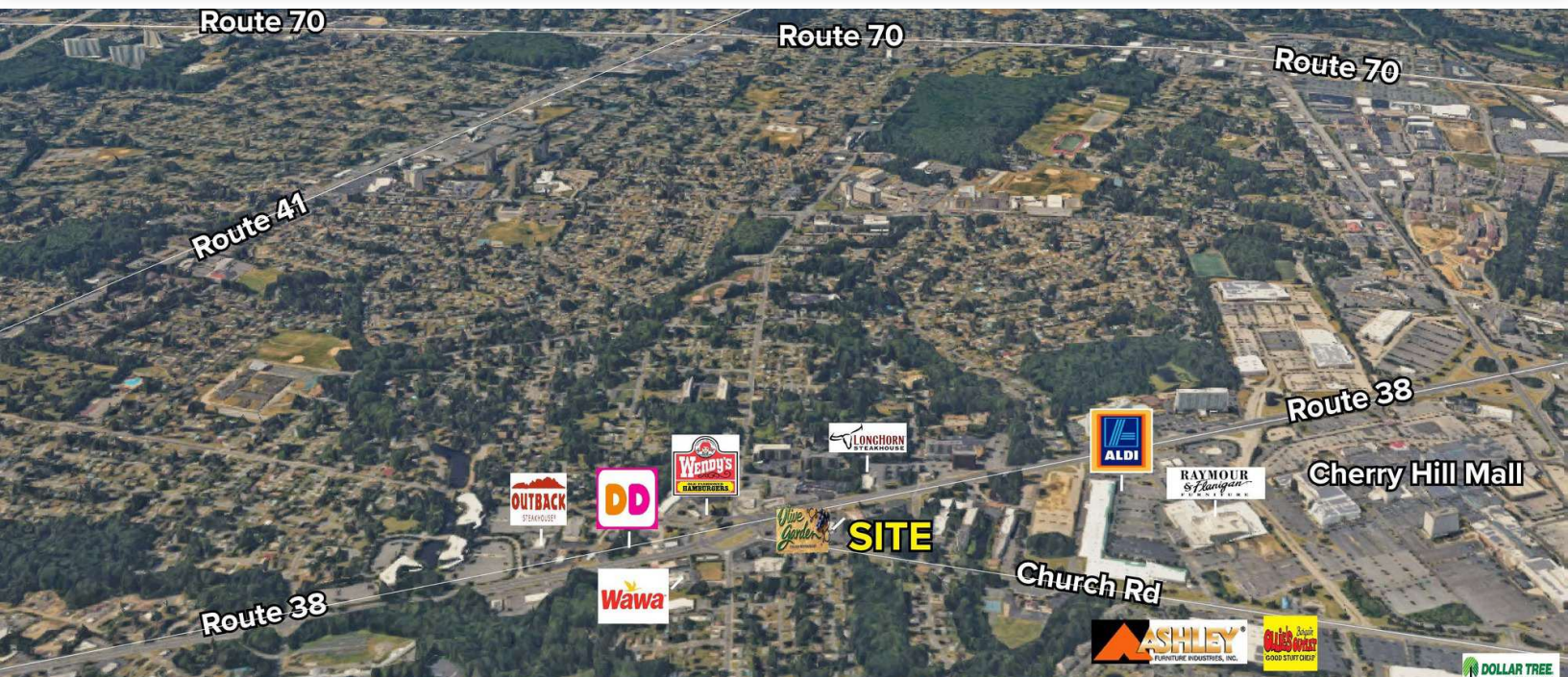
FOR SALE



LAND W/ 2 BLDGS



1.7 ACRES



PROPERTY HIGHLIGHTS

- 1.7 ACRES FOR SALE
- Two separate office buildings on site
- Zoned B2 - Highway Business Zone
- Two curb cuts on Church Road
- Traffic count on Church Road: 10,930
- Adjacent to Cherry Hill Mall
- Located just off Route 38
- 2 miles to Route 70
- Within 4 miles of Route 30 and Route 130
- 7 miles to Ben Franklin Bridge into Philadelphia



FOR MORE INFORMATION

Jeffrey Sloan



856.234.9600 x203



jeff.sloan@naimertz.com

NAI MERTZ DISCLAIMER: NO WARRANTY OR REPRESENTATION, EXPRESS OR IMPLIED, IS MADE AS TO THE ACCURACY OF THE INFORMATION CONTAINED HEREIN, AND THE SAME IS SUBMITTED SUBJECT TO ERRORS, OMISSIONS, CHANGE OF PRICE, RENTAL OR OTHER CONDITIONS, PRIOR SALE, LEASE OR FINANCING, OR WITHDRAWAL WITHOUT NOTICE, AND OF ANY SPECIAL LISTING CONDITIONS IMPOSED BY OUR PRINCIPALS NO WARRANTIES OR REPRESENTATIONS ARE MADE AS TO THE CONDITION OF THE PROPERTY OR ANY HAZARDS CONTAINED THEREIN ARE ANY TO BE IMPLIED. OUTLINES ARE APPROXIMATE AND SHOWN ONLY TO IDENTIFY THE PARCEL IN CONSIDERATION.

NAIMertz



NAI Mertz | 21 Roland Avenue
Mount Laurel, NJ 08054
856.234.9600 | naimertz.com



EXTERIOR PHOTOS

2306 & 2310 Church Road, Cherry Hill, NJ 08002



FOR SALE



LAND W/ 2 BLDGS



1.7 ACRES



2306 Church Road



23010 Church Road

FOR MORE INFORMATION

Jeffrey Sloan



856.234.9600 x203



jeff.sloan@naimertz.com

NAI MERTZ DISCLAIMER: NO WARRANTY OR REPRESENTATION, EXPRESS OR IMPLIED, IS MADE AS TO THE ACCURACY OF THE INFORMATION CONTAINED HEREIN, AND THE SAME IS SUBMITTED SUBJECT TO ERRORS, OMISSIONS, CHANGE OF PRICE, RENTAL OR OTHER CONDITIONS, PRIOR SALE, LEASE OR FINANCING, OR WITHDRAWAL WITHOUT NOTICE, AND OF ANY SPECIAL LISTING CONDITIONS IMPOSED BY OUR PRINCIPALS NO WARRANTIES OR REPRESENTATIONS ARE MADE AS TO THE CONDITION OF THE PROPERTY OR ANY HAZARDS CONTAINED THEREIN ARE ANY TO BE IMPLIED. OUTLINES ARE APPROXIMATE AND SHOWN ONLY TO IDENTIFY THE PARCEL IN CONSIDERATION.

NAI Mertz



NAI Mertz | 21 Roland Avenue
Mount Laurel, NJ 08054

856.234.9600 | naimertz.com



INTERIOR PHOTOS

2306 & 2310 Church Road, Cherry Hill, NJ 08002



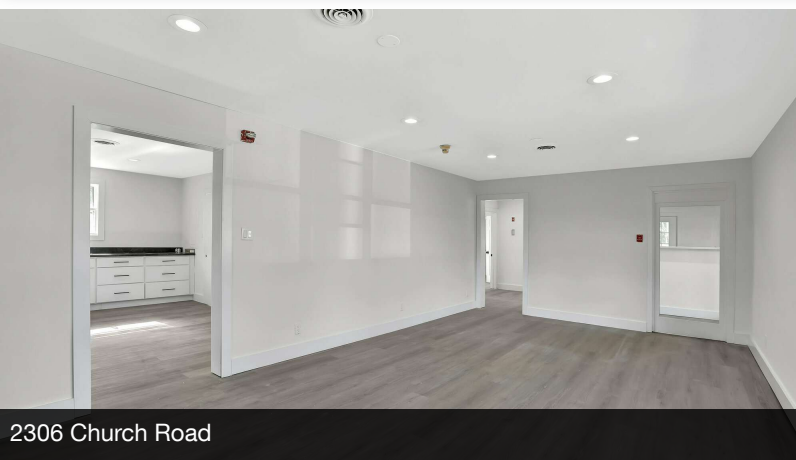
FOR SALE



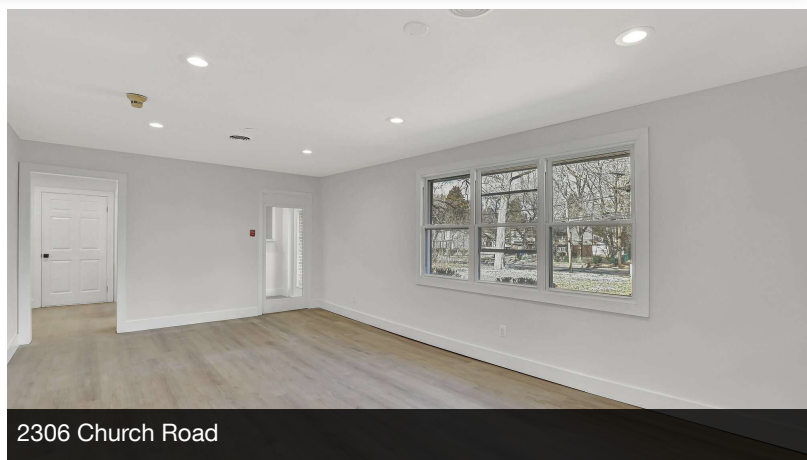
LAND W/ 2 BLDGS



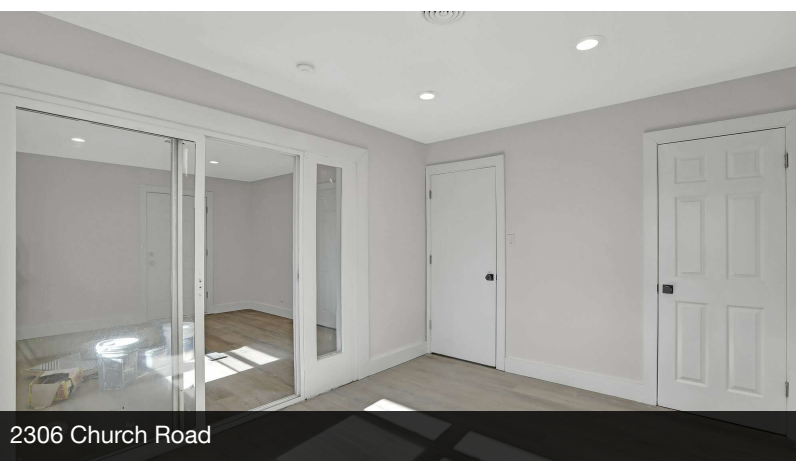
1.7 ACRES



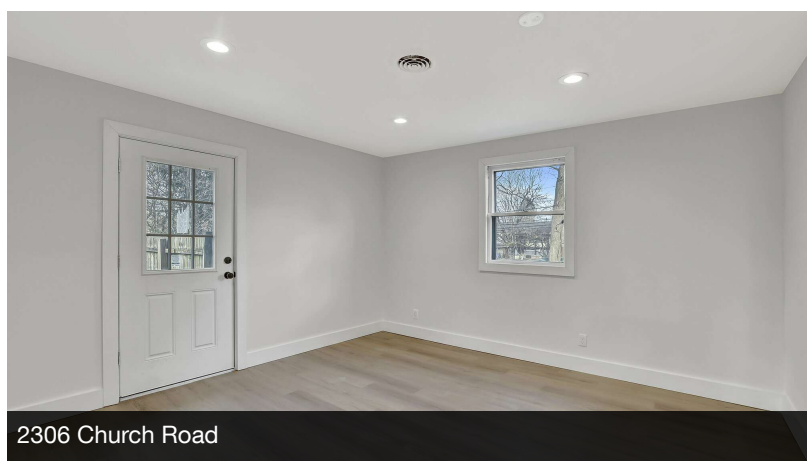
2306 Church Road



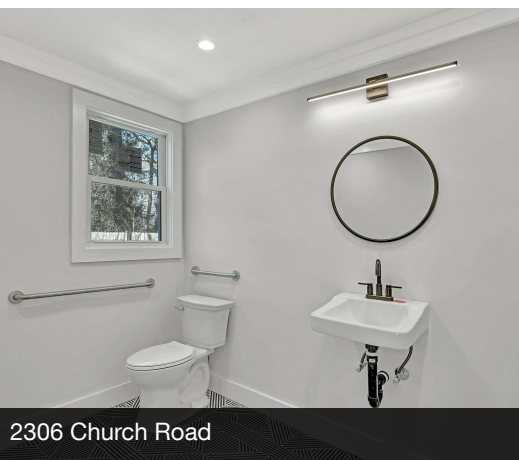
2306 Church Road



2306 Church Road



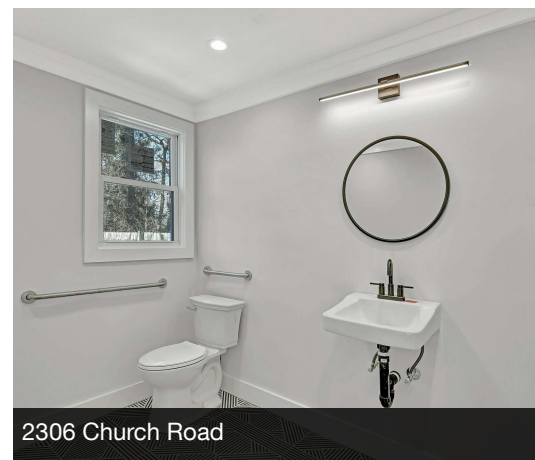
2306 Church Road



2306 Church Road



2306 Church Road



2306 Church Road

FOR MORE INFORMATION

Jeffrey Sloan

856.234.9600 x203

jeff.sloan@naimertz.com

NAI MERTZ DISCLAIMER: NO WARRANTY OR REPRESENTATION, EXPRESS OR IMPLIED, IS MADE AS TO THE ACCURACY OF THE INFORMATION CONTAINED HEREIN, AND THE SAME IS SUBMITTED SUBJECT TO ERRORS, OMISSIONS, CHANGE OF PRICE, RENTAL OR OTHER CONDITIONS, PRIOR SALE, LEASE OR FINANCING, OR WITHDRAWAL WITHOUT NOTICE, AND OF ANY SPECIAL LISTING CONDITIONS IMPOSED BY OUR PRINCIPALS NO WARRANTIES OR REPRESENTATIONS ARE MADE AS TO THE CONDITION OF THE PROPERTY OR ANY HAZARDS CONTAINED THEREIN ARE ANY TO BE IMPLIED. OUTLINES ARE APPROXIMATE AND SHOWN ONLY TO IDENTIFY THE PARCEL IN CONSIDERATION.

NAIMertz



NAI Mertz | 21 Roland Avenue
Mount Laurel, NJ 08054

856.234.9600 | naimertz.com



LOCATION INFORMATION

2306 & 2310 Church Road, Cherry Hill, NJ 08002



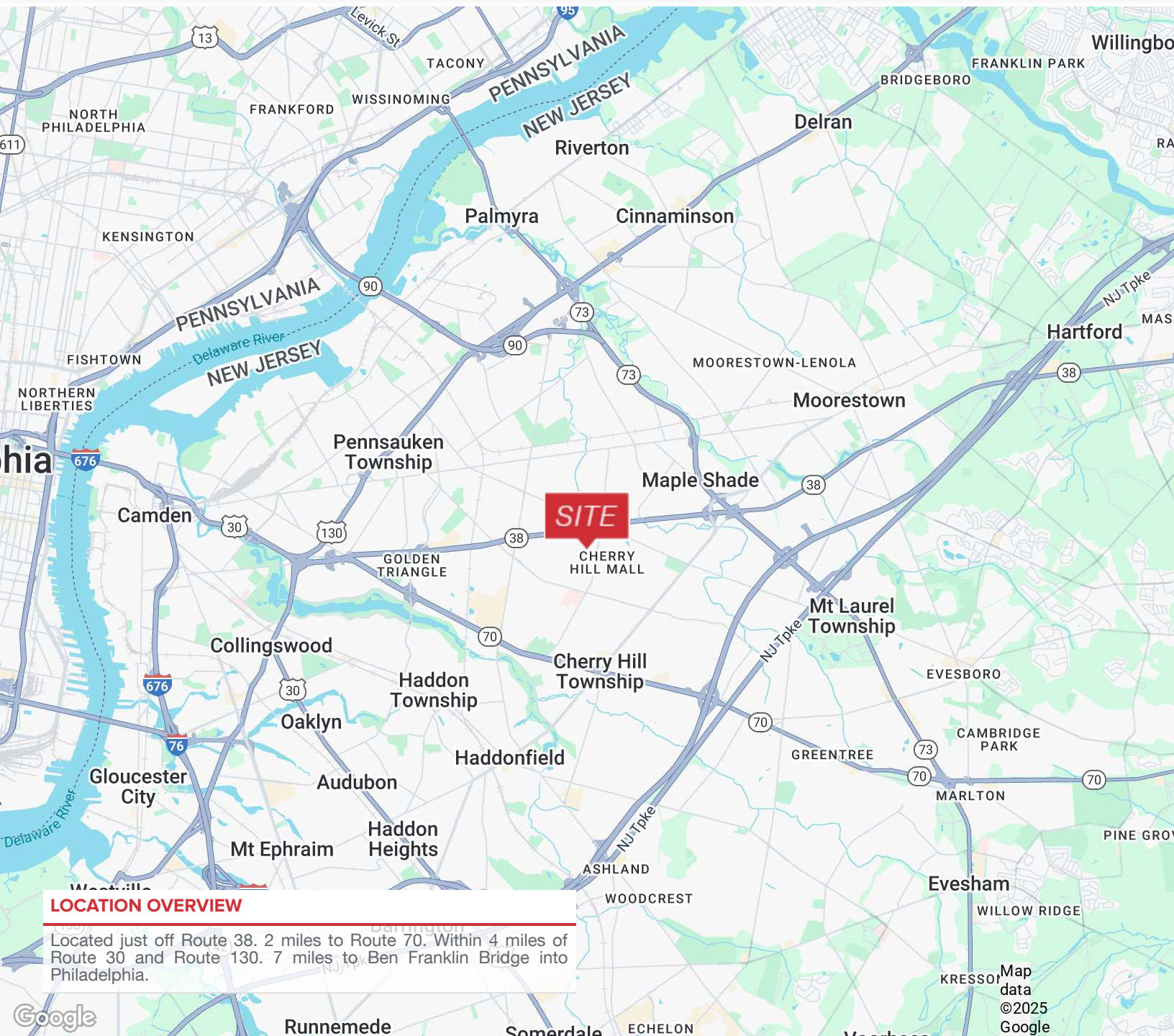
FOR SALE



LAND W/ 2 BLDGS



1.7 ACRES



LOCATION OVERVIEW

Located just off Route 38. 2 miles to Route 70. Within 4 miles of Route 30 and Route 130. 7 miles to Ben Franklin Bridge into Philadelphia.

FOR MORE INFORMATION

Jeffrey Sloan

856.234.9600 x203

jeff.sloan@naimertz.com

NAI MERTZ DISCLAIMER: NO WARRANTY OR REPRESENTATION, EXPRESS OR IMPLIED, IS MADE AS TO THE ACCURACY OF THE INFORMATION CONTAINED HEREIN, AND THE SAME IS SUBMITTED SUBJECT TO ERRORS, OMISSIONS, CHANGE OF PRICE, RENTAL OR OTHER CONDITIONS, PRIOR SALE, LEASE OR FINANCING, OR WITHDRAWAL WITHOUT NOTICE, AND OF ANY SPECIAL LISTING CONDITIONS IMPOSED BY OUR PRINCIPALS NO WARRANTIES OR REPRESENTATIONS ARE MADE AS TO THE CONDITION OF THE PROPERTY OR ANY HAZARDS CONTAINED THEREIN ARE ANY TO BE IMPLIED. OUTLINES ARE APPROXIMATE AND SHOWN ONLY TO IDENTIFY THE PARCEL IN CONSIDERATION.

NAI Mertz



NAI Mertz | 21 Roland Avenue

Mount Laurel, NJ 08054

856.234.9600 | naimertz.com

