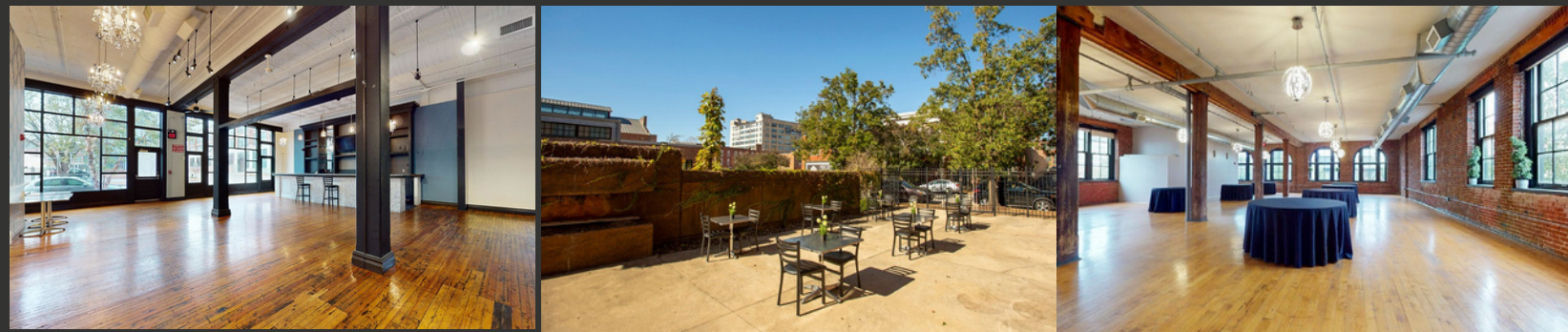


Floorplan Disclaimer: All measurements are approximate and not guaranteed to be exact or to scale. Buyer should confirm measurements using their own sources prior to purchasing or writing an offer to purchase. Not for use with appraisal/assessment.



Transaction Type:

Sale/Lease

Lot Dimensions:

69 X 155 FT

21,390  
APPROX SQ FT

4 | 4  
LAVATORIES

1  
BUILDING

3  
STORIES



**JUSTIN STRÖHM**  
REALTOR®  
(314) 814-6178  
Justin.Strohm@CircaSTL.com

PROUDLY BROKERED BY:

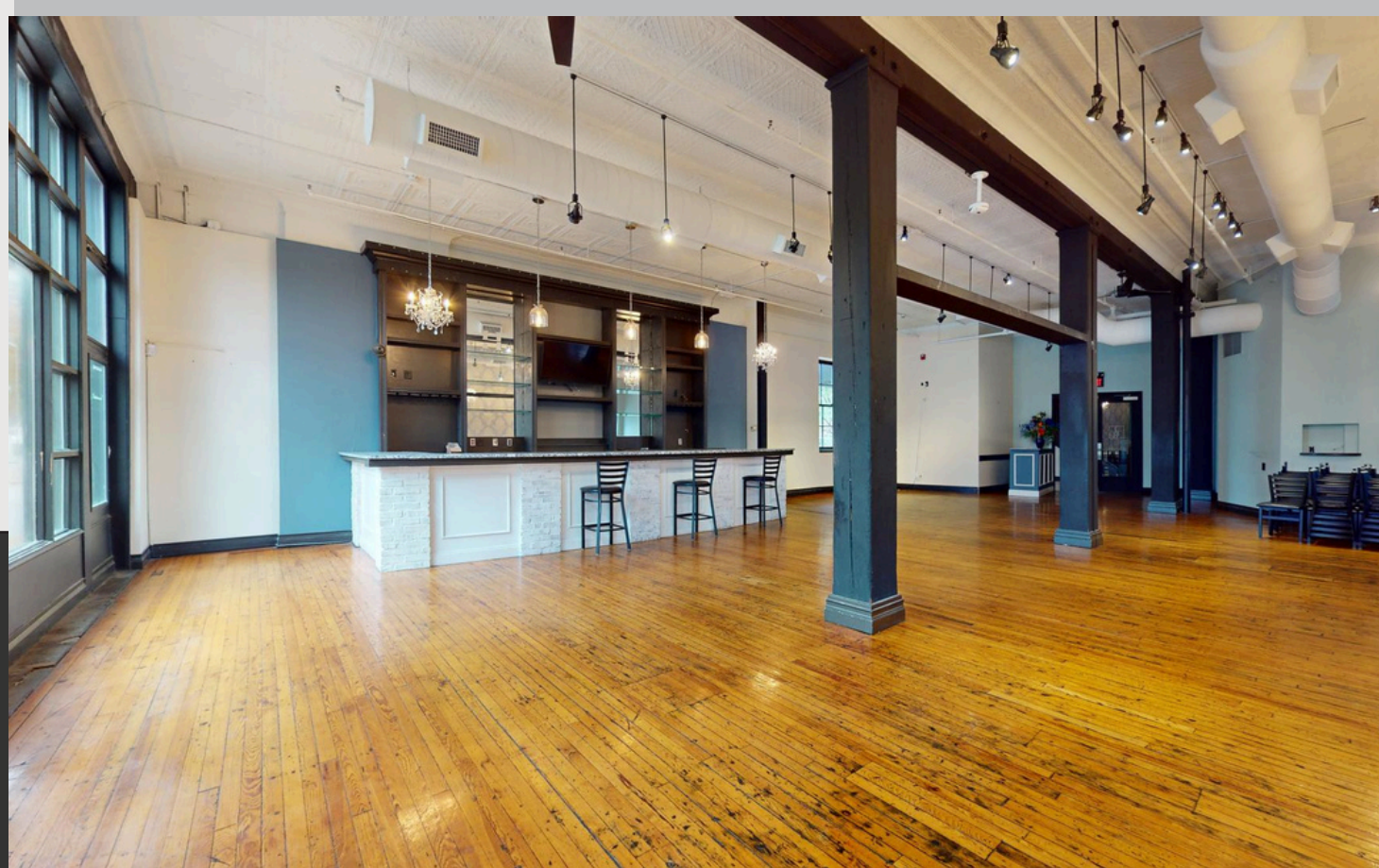
**circa | COLLECTION**

THE ART OF PARTNERSHIP

(314) 352-5200 [www.CircaSTL.com](http://www.CircaSTL.com)

**1900 Locust Street**  
DOWNTOWN WEST | 63103

**FOR SALE OR LEASE**



## Flexible Event Space | Indoor & Outdoor Areas

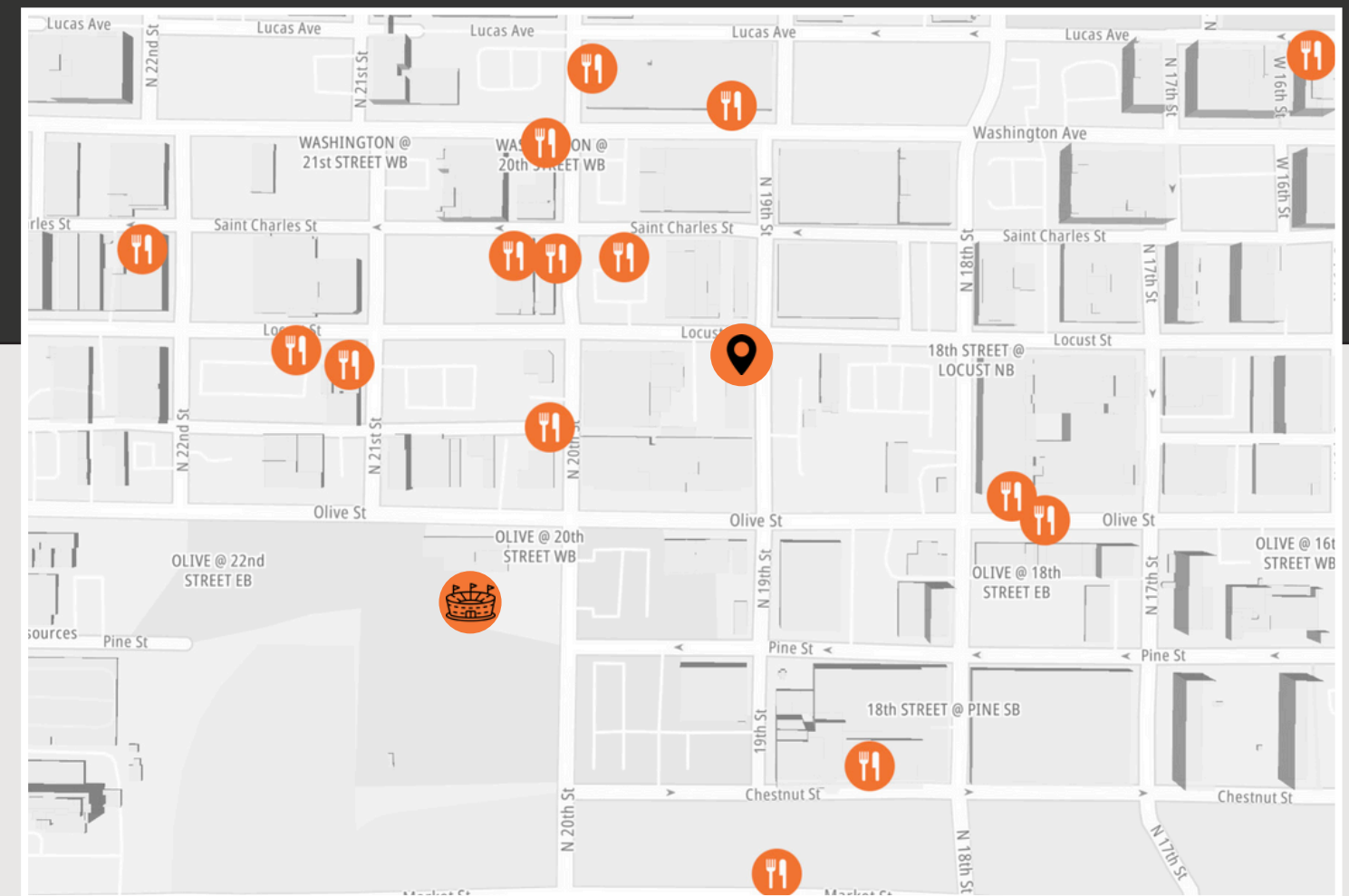
Visitors can take the elevator or grand stair to the second level with two flex/event spaces, catering kitchen, ADA bathrooms, and a 600+ sqft balcony. The elevator-served third floor has three office suites and two ADA bathrooms. Additional storage, shop space, baths, and offices in the basement. All spaces have their own dedicated heating and cooling. Also available for lease, contact listing agent for additional information.



## Fantastic Location | Turn-Key Opportunity

Circa 1890: This three story Romanesque is a turnkey restaurant and office opportunity just steps from Downtown West mainstays Union Station, St. Louis Aquarium, Schlafly Taproom and Brick River Cider Co, the stylish Lofts at the HUPP, and the new St. Louis City Soccer Club Stadium.

The first floor features 7,100+ sqft of restaurant and bar space with two complete service areas, soaring 14' ceilings, a massive kitchen with all equipment and private catering elevator, 2,600+ sqft patio for outdoor seating, and ADA accessible entry and bathrooms.



 = 1900 LOCUST STREET

 = MLS STADIUM