

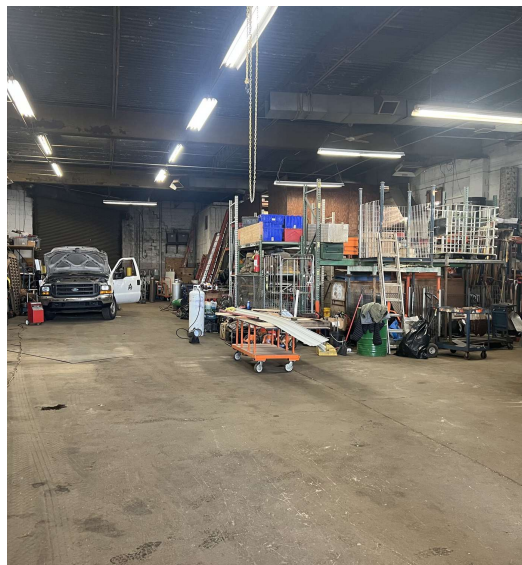
3101 E. ONTARIO ST.

Philadelphia, PA 19134

 FOR SALE OR LEASE

 INDUSTRIAL

 8,000 SF



PROPERTY DESCRIPTION

- Building Size: 8,000 SF
- Description: Free standing, clear span industrial building in Port Richmond
- Lot Size: .18 AC
- Ceiling Height: 16.25' -17' clear
- Dimensions: 50' x 155'
- Lighting: Florescent
- Office: 1,000 SF
- Loading: 2 drive-in doors
- Year Built: 1950
- Zoning: I-3, Heavy Industrial
- Property Taxes: \$6,079 (2024)

FOR MORE INFORMATION

Jared Licht

 215.396.2900 x105

 jared.licht@naimertz.com


Jeffrey Licht, SIOR

 215.396.2900 x101

 jeff.licht@naimertz.com

NAI MERTZ DISCLAIMER: NO WARRANTY OR REPRESENTATION, EXPRESS OR IMPLIED, IS MADE AS TO THE ACCURACY OF THE INFORMATION CONTAINED HEREIN, AND THE SAME IS SUBMITTED SUBJECT TO ERRORS, OMISSIONS, CHANGE OF PRICE, RENTAL OR OTHER CONDITIONS, PRIOR SALE, LEASE OR FINANCING, OR WITHDRAWAL WITHOUT NOTICE, AND OF ANY SPECIAL LISTING CONDITIONS IMPOSED BY OUR PRINCIPALS NO WARRANTIES OR REPRESENTATIONS ARE MADE AS TO THE CONDITION OF THE PROPERTY OR ANY HAZARDS CONTAINED THEREIN ARE ANY TO BE IMPLIED. OUTLINES ARE APPROXIMATE AND SHOWN ONLY TO IDENTIFY THE PARCEL IN CONSIDERATION.

NAI Mertz

 **NAI Mertz** | 210 E. Street Road, Suite 3B
Feasterville-Trevose, PA 19053
215-396-2900 | naimertz.com



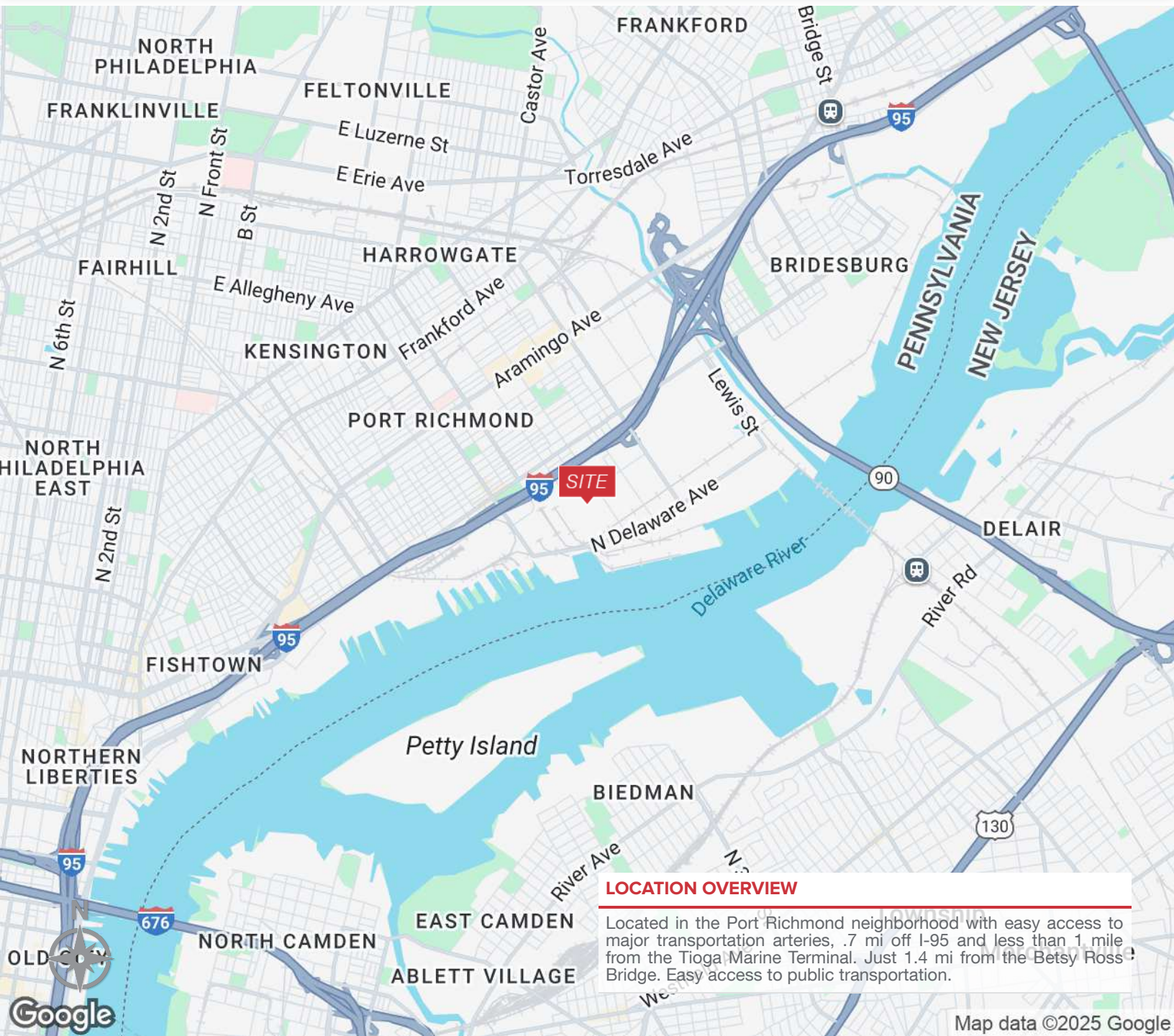
3101 E. ONTARIO ST.

Philadelphia, PA 19134

 FOR SALE OR LEASE

 INDUSTRIAL

 8,000 SF



LOCATION OVERVIEW

Located in the Port Richmond neighborhood with easy access to major transportation arteries, .7 mi off I-95 and less than 1 mile from the Tioga Marine Terminal. Just 1.4 mi from the Betsy Ross Bridge. Easy access to public transportation.

Map data ©2025 Google

FOR MORE INFORMATION

Jared Licht

 215.396.2900 x105


 jared.licht@naimertz.com

Jeffrey Licht, SIOR

 215.396.2900 x101

 jeff.licht@naimertz.com

NAIMertz

 **NAI Mertz** | 210 E. Street Road, Suite 3B
Feasterville-Treose, PA 19053
215-396-2900 | naimertz.com

NAI MERTZ DISCLAIMER: NO WARRANTY OR REPRESENTATION, EXPRESS OR IMPLIED, IS MADE AS TO THE ACCURACY OF THE INFORMATION CONTAINED HEREIN, AND THE SAME IS SUBMITTED SUBJECT TO ERRORS, OMISSIONS, CHANGE OF PRICE, RENTAL OR OTHER CONDITIONS, PRIOR SALE, LEASE OR FINANCING, OR WITHDRAWAL WITHOUT NOTICE, AND OF ANY SPECIAL LISTING CONDITIONS IMPOSED BY OUR PRINCIPALS. NO WARRANTIES OR REPRESENTATIONS ARE MADE AS TO THE CONDITION OF THE PROPERTY OR ANY HAZARDS CONTAINED THEREIN ARE ANY TO BE IMPLIED. OUTLINES ARE APPROXIMATE AND SHOWN ONLY TO IDENTIFY THE PARCEL IN CONSIDERATION.

