

12 EAST COMMERCE ST

HERNANDO, MS 38632

FOR LEASE




LOCATION DESCRIPTION

Space available on E Commerce St just west of Interstate 55 in Hernando, MS

PROPERTY HIGHLIGHTS

- 7,200 SF space available
- Adjacent to Dollar Tree and Complete Home Center
- Easy access to US Hwy 51 and Interstate 55
- Hernando, the county seat of Desoto County, has experienced a 9.47% population increase since 2020
- 3 major mixed-use developments are currently under construction on McIngvale Rd at I-269
- New Hernando High School on 94-acres opened August 2025 with 1,500± students
- Traffic Count: E Commerce St 21,000 AADT



 DEMOGRAPHICS	3 MILES	5 MILES	7 MILES
Population	19,570	25,353	41,973
Daytime Population	17,700	21,082	31,514
Households	7,341	9,459	15,404
Average HH Income	\$111,843	\$117,723	\$122,967



SHAWN MASSEY, CCIM, CRRP, ALC

shawn.massey@tscg.com
901.334.5702

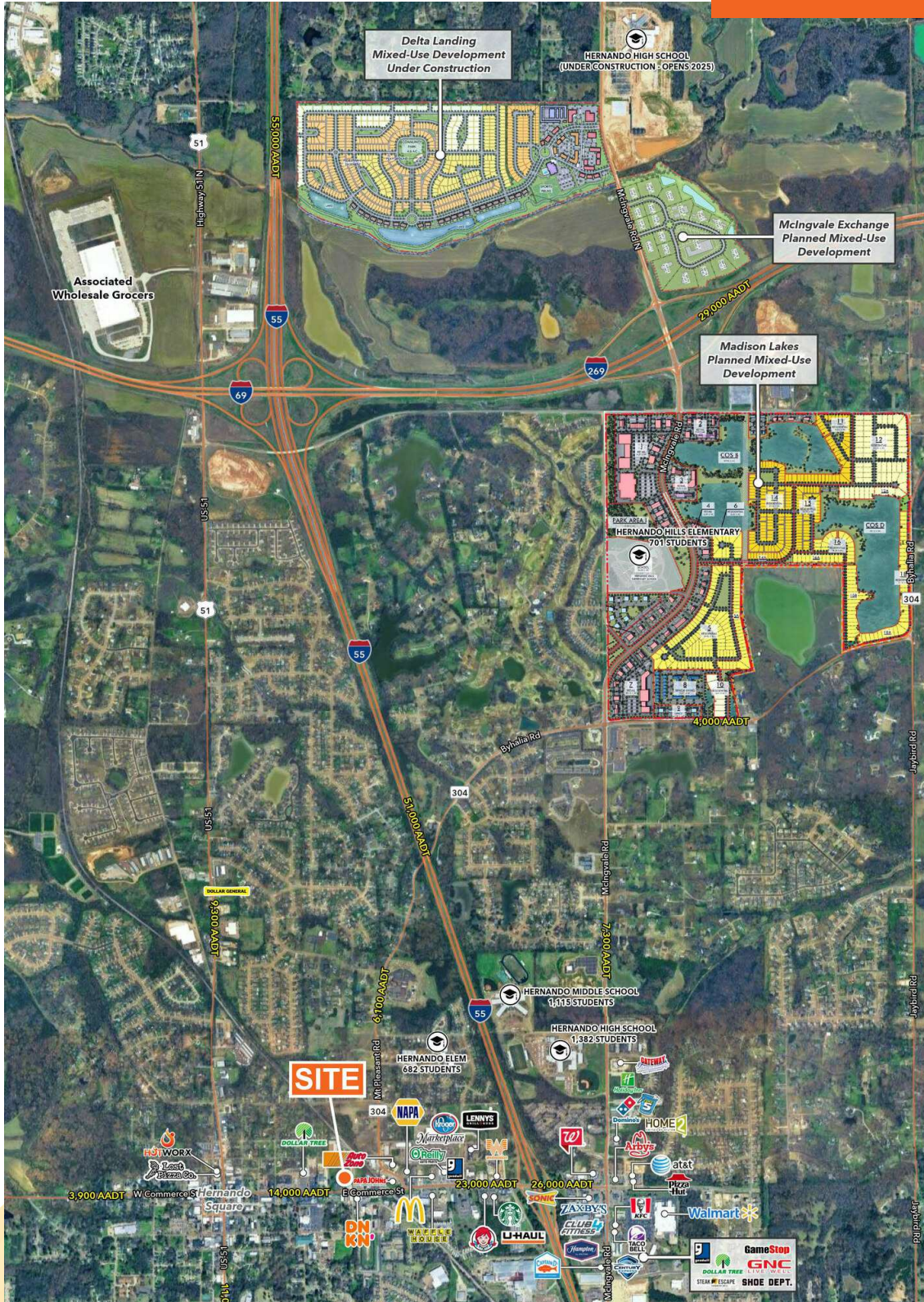
SIDNEY SEALE

sidney.seale@tscg.com
901.252.1039

12 EAST COMMERCE ST

HERNANDO, MS 38632

FOR LEASE



SHAWN MASSEY, CCIM, CRRP, ALC
shawn.massey@tscg.com
901.334.5702

SIDNEY SEALE
sidney.seale@tscg.com
901.252.1039