

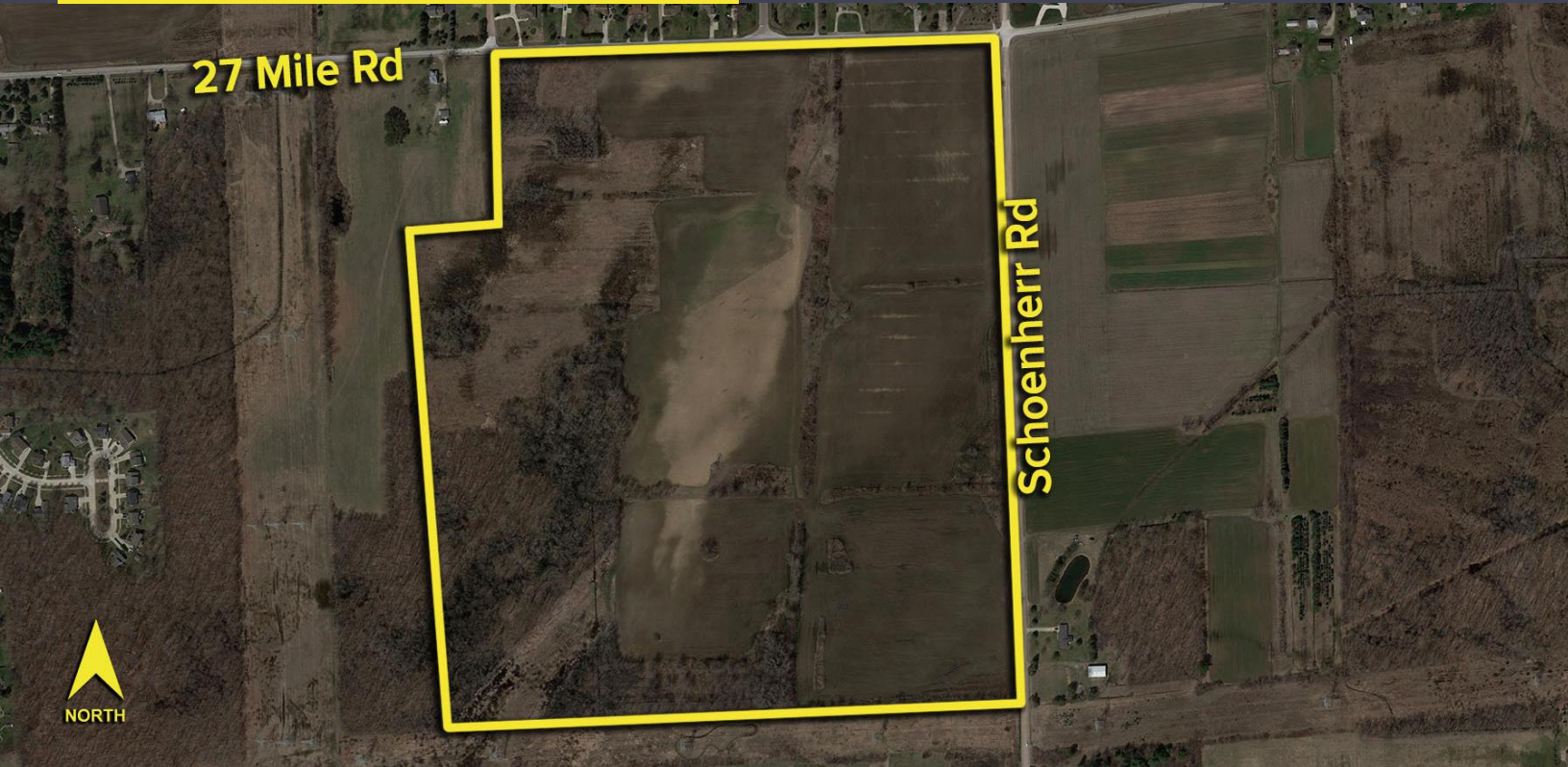
13320 TWENTY-SEVEN MILE RD  
WASHINGTON TWP., MICHIGAN

VACANT LAND FOR SALE  
133.50 Acres Available



**SIGNATURE  
ASSOCIATES**  
KNOW SIGNATURE | KNOW RESULTS

**DEVELOPMENT LAND**



## PROPERTY FEATURES

- 133.50 acres available
- Zoned RIB
- Northern Macomb location
- Hard corner of 27 Mile Road & Schoenherr Road.
- Possibly mixed-use, residential, multi-family, or assisted living
- Great school district (Romeo)
- Sale Price: \$6,000,000 (\$44,943.82/acre)



For more information, please contact:

**PAUL SAAD**  
(248) 359 0652  
psaad@signatureassociates.com

**STEVE GORDON**  
(248) 948 0101  
sgordon@signatureassociates.com

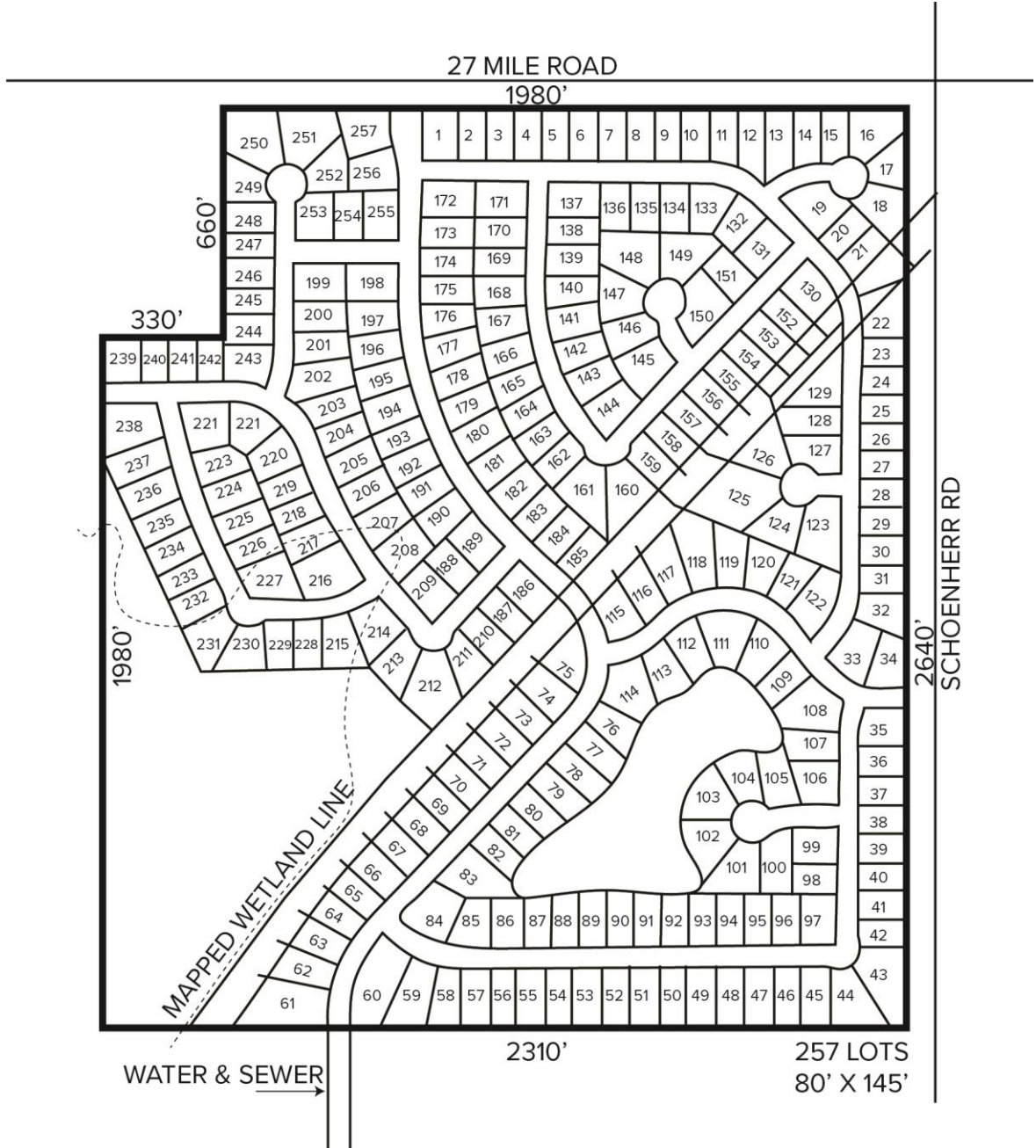
**SIGNATURE ASSOCIATES**  
One Towne Square, Suite 1200  
Southfield, MI 48076  
www.signatureassociates.com

# 13320 Twenty-Seven Mile Rd – Washington Twp., Michigan

## Vacant Land For Sale

133.50  
Acres  
AVAILABLE

### Site Plan



For more information, please contact:  
**PAUL SAAD**  
(248) 359 0652  
psaad@signatureassociates.com

**STEVE GORDON**  
(248) 948 0101  
sgordon@signatureassociates.com

**SIGNATURE ASSOCIATES**  
One Towne Square, Suite 1200  
Southfield, MI 48076  
www.signatureassociates.com