

LAND FOR SALE **+8.42 AC**



4401 HOUSTON HIGHWAY | VICTORIA, TX 77901



Alex Kelly
Vice President
+1 713 425 1863
alexh.kelly@jll.com

Karina Weathers
Associate
+1 713 212 6702
karina.weathers@jll.com

COMMUTE & DEMOGRAPHICS



Location

4401 Houston Highway | Victoria, TX 77901

Size

±8.42 Acres

Site Details

- ±459' frontage on Highway 59
- Located in an opportunity zone
- Close proximity to Loop 463 and US 87

Detention

Detention required

About the Area

Victoria is a city located in the southeastern part of Texas, United States. Situated approximately 30 miles inland from the Gulf of Mexico, it serves as the county seat of Victoria County. Victoria is known for its diverse economy and strong presence in industries such as manufacturing, retail, healthcare, education, and oil and gas. It is home to a population of around 67,000 people, making it one of the larger cities in the region.

Price

Contact brokers for pricing

Demographics

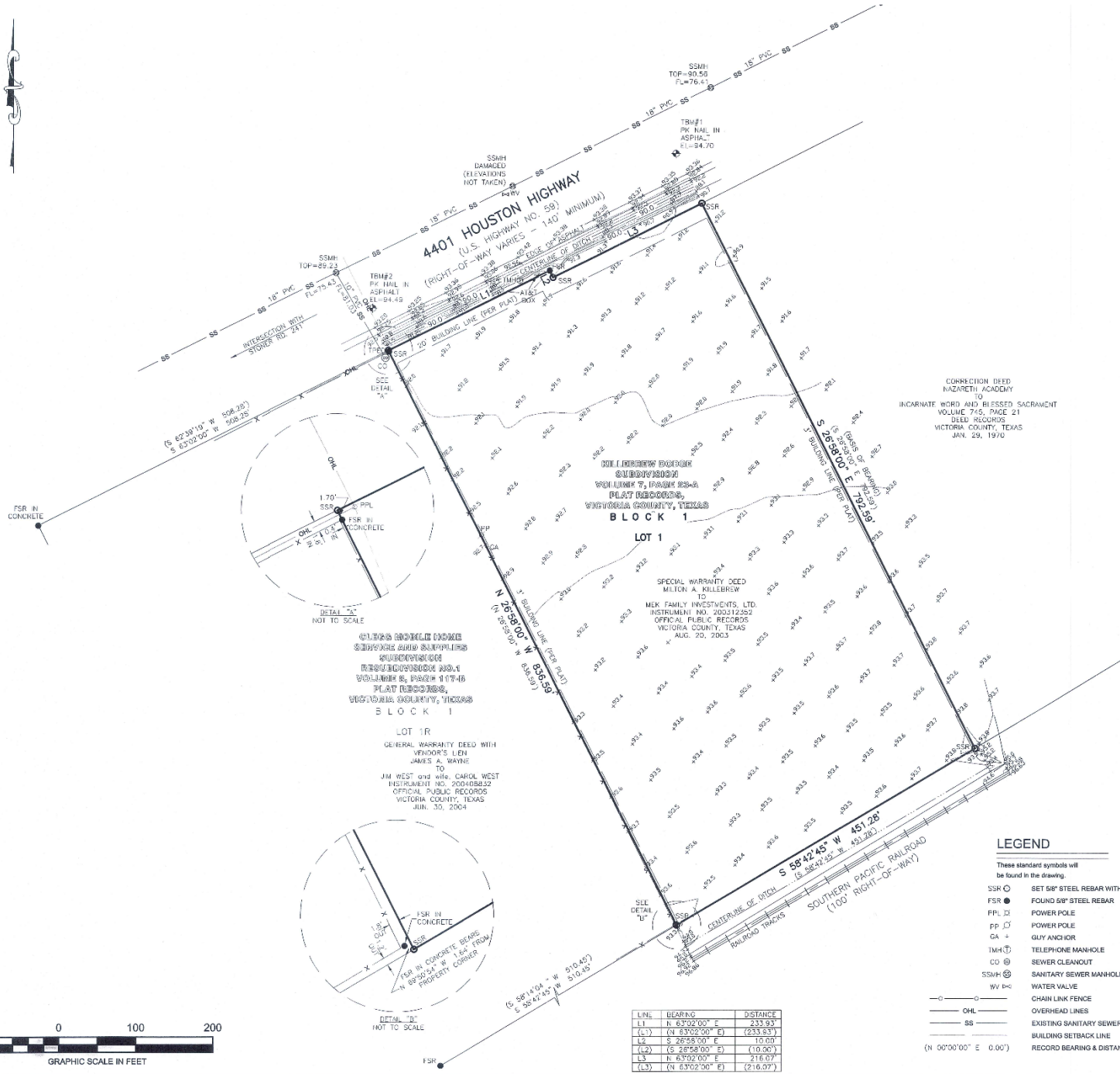
Population Summary	1-Mile	3-Mile	5-Mile
2024 Population	5,028	46,106	61,793
2024 Median Age	37.6	35.5	36.5
Average Household Income	\$84,883	\$79,282	\$83,941
Average Home Value	\$229,842	\$200,800	\$222,791

Drive Times

Locations	Minutes
University of Houston - Victoria	3
Victoria Regional Airport	5
DeTar Hospital Navarro	10
Houston City Limits	90

PROPERTY SURVEY

±8.42 AC | 4401 HOUSTON HIGHWAY | VICTORIA, TX 77901



PROPERTY AERIAL

±8.42 AC | 4401 HOUSTON HIGHWAY | VICTORIA, TX 77901



PROPERTY AERIAL

±8.42 AC | 4401 HOUSTON HIGHWAY | VICTORIA, TX 77901



Although information has been obtained from sources deemed reliable, JLL does not make any guarantees, warranties or representations, express or implied, as to the completeness or accuracy as to the information contained herein. Any projections, opinions, assumptions or estimates used are for example only. There may be differences between projected and actual results, and those differences may be material. JLL does not accept any liability for any loss or damage suffered by any party resulting from reliance on this information. If the recipient of this information has signed a confidentiality agreement with JLL regarding this matter, this information is subject to the terms of that agreement. ©2024 Jones Lang LaSalle IP, Inc. All rights reserved.