

FOR LEASE

803,513 SF TOTAL AREA - DIVISIBLE



EAST END LOGISTICS PARK

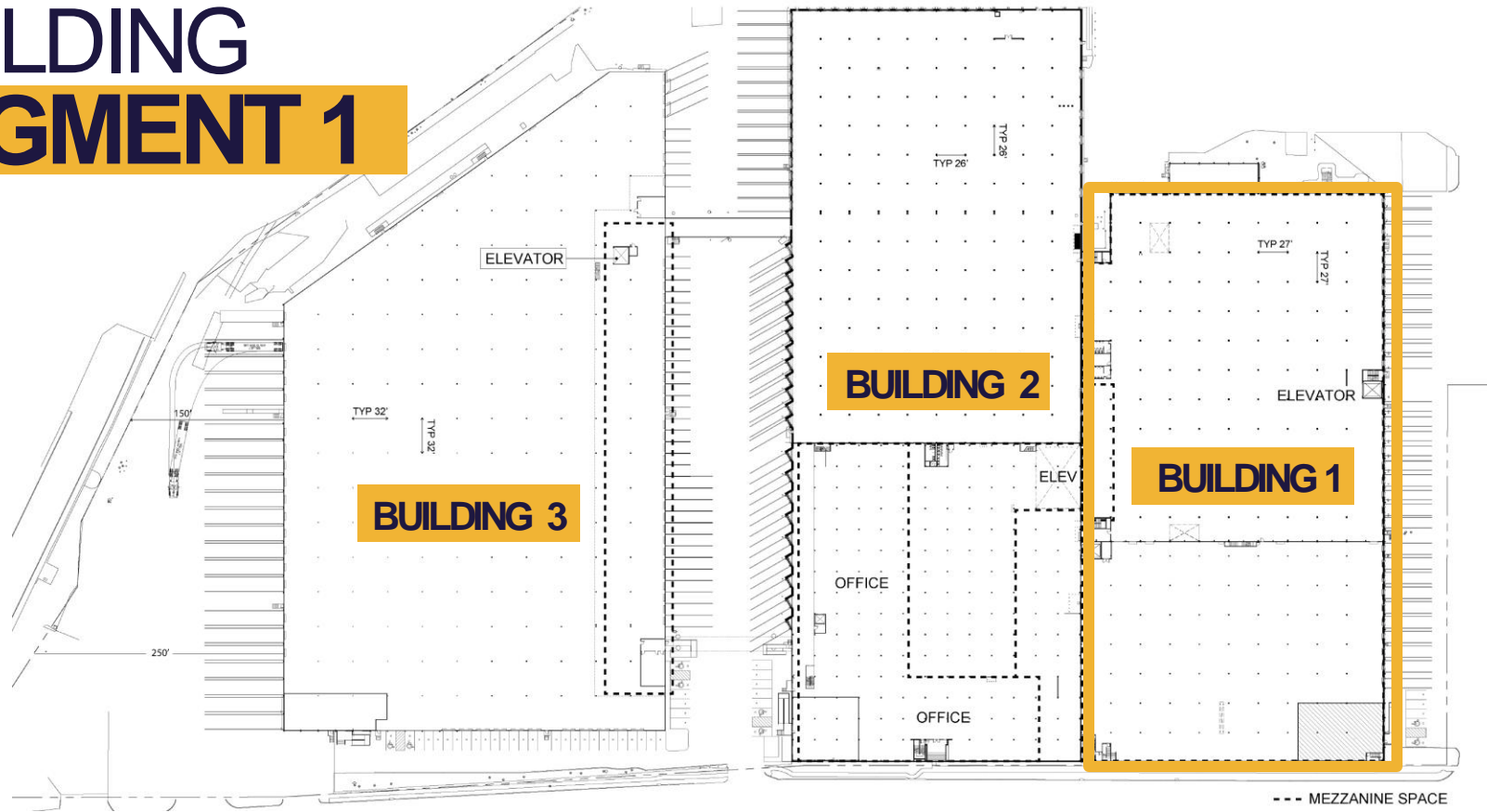
2103 ERNESTINE STREET | HOUSTON, TX 77023



MULTI TENANT BUILDING PLAN



BUILDING SEGMENT 1



First Floor: 155,985 SF

Office: BTS

Clear Height: 11' 6"

Column Spacing: 27'x27'

Loading Doors: (33) 8'x10' Dock-High

Others: 108' Truck Court
Existing freight elevator

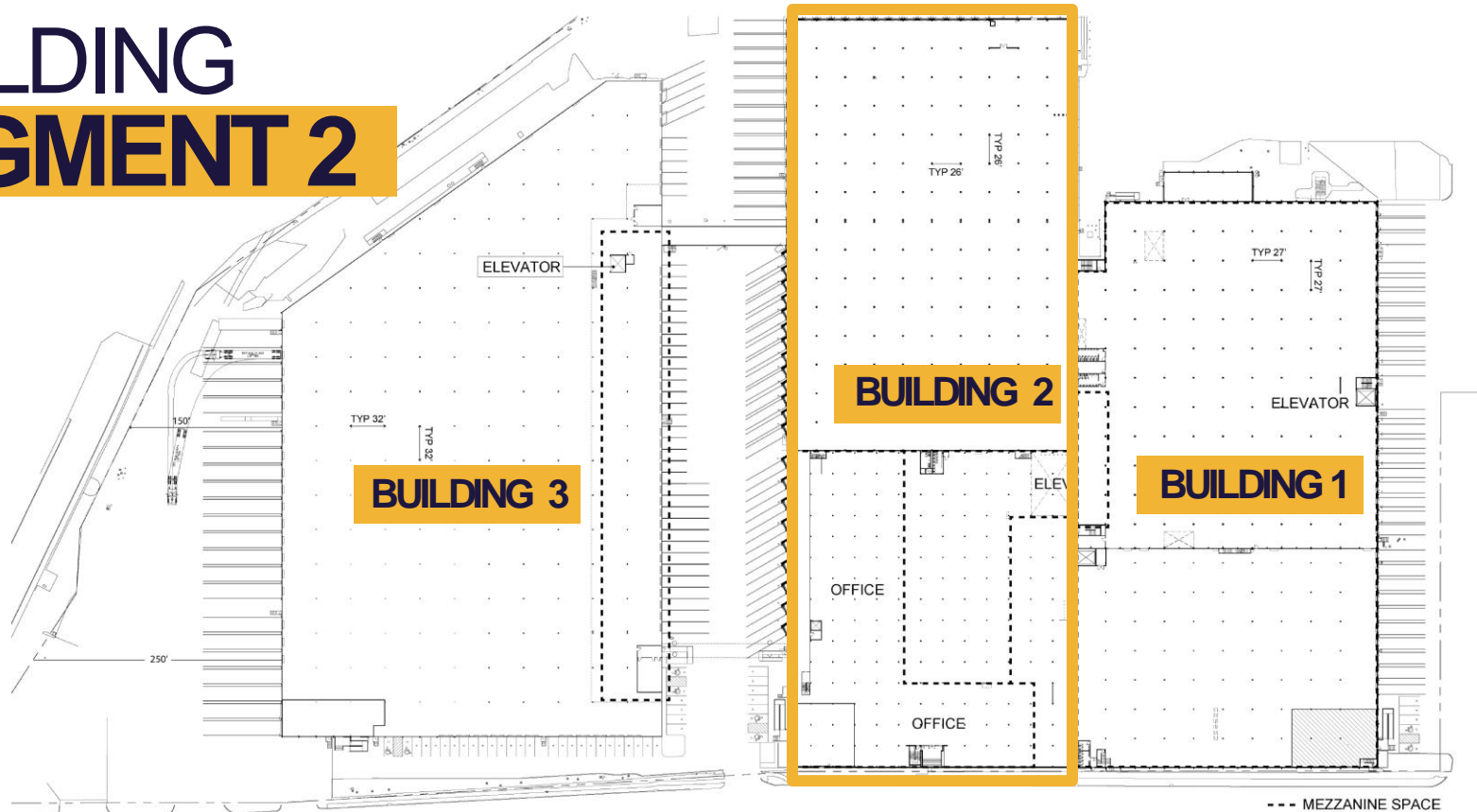
Second Floor: 153,590 SF

Office: Existing Minimal

Clear Height 11' 6"

Column Spacing: 27'x27'

BUILDING SEGMENT 2



First Floor:

High Bay: ± 100,000 SF

Office: BTS

Clear Height: 17' 6"

Column Spacing: 26'x26'

Loading Doors: (5) 12'x8' dock-high
(49) 8'x9' dock high
(1) 10'x10' dock-high
(1) Ramp

Others: 120' Shared Truck Court

First Floor:

95,773 SF

Office: BTS

Clear Height: 9'

Column Spacing: 19'x20'

Others: Existing freight elevator

Second Floor:

73,350 SF

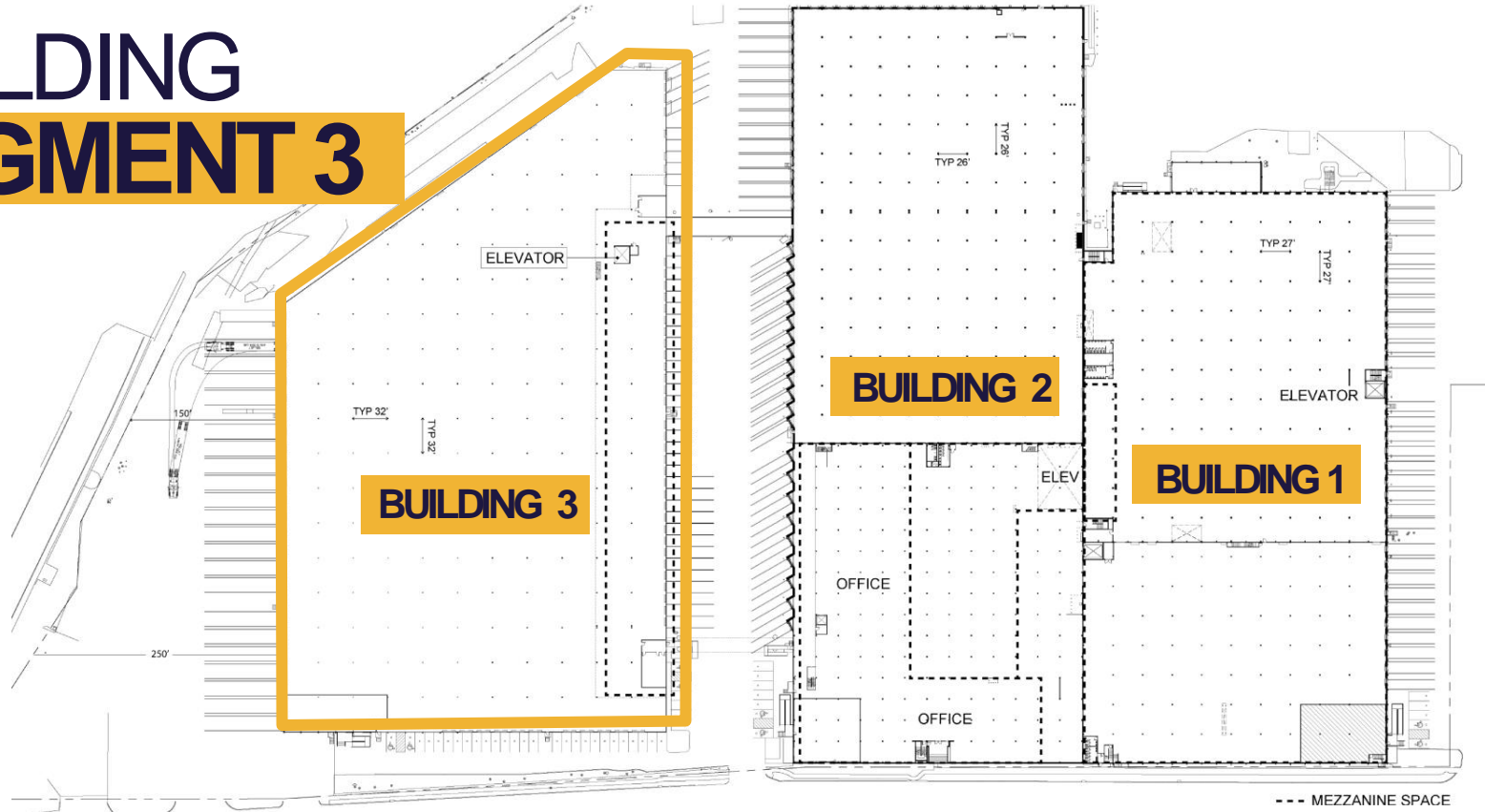
(excludes open 17' clear area in South and Northwest corners)

Office: ±10,000 SF Existing

Clear Height: 11'

Column Spacing: 19'x20'

BUILDING SEGMENT 3



First Floor: 192,916 SF

Second Floor: 31,899 SF Mezzanine

Office: BTS

Clear Height: 27' Clear

Clear Height (floor to mezz): 10' 4"

Clear Height (mezz) second floor: 15'

Column Spacing: 32'x32'

Loading Doors: (25) 9'x10' dock-high
(4) 8'x10' dock high
(16) 12'x9' Semi-dock
(1) Ramp

Others: 150'-250' Truck Court
Paved loading or parking on South side

CONTACT INFORMATION

JIM FOREMAN

Vice Chairman
+1 713 963 2824
jim.foreman@cushwake.com

MICHAEL FOREMAN

Executive Director
+1 713 963 2850
michael.foreman@cushwake.com

BROOKE SWERDLOW

Director
+1 713 331 1735
brooke.swerdlow@cushwake.com

IRYNA FALYK

Senior Transaction Manager
+1 713 260 0226
iryna.falyk@cushwake.com

