



Full Floor, High-Rise Suites Available Now



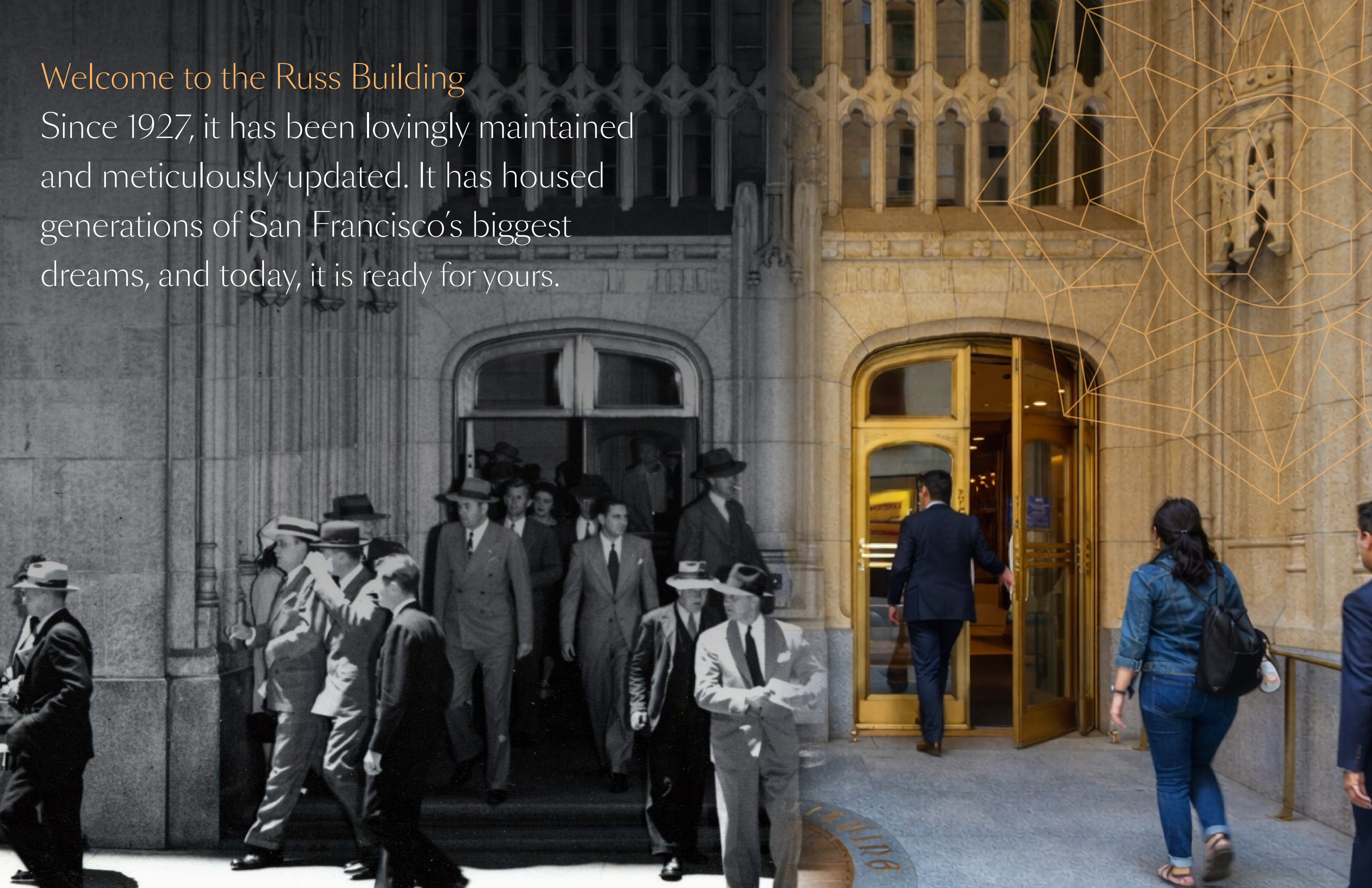
**RUSS**  
BUILDING



**CUSHMAN &  
WAKEFIELD**

## Welcome to the Russ Building

Since 1927, it has been lovingly maintained and meticulously updated. It has housed generations of San Francisco's biggest dreams, and today, it is ready for yours.



## MODERN OFFICE + ICONIC SETTING

# A higher standard in the heart of the Financial District

With its iconic stature in the Financial District, the “Mighty Russ” is one of San Francisco’s most recognizable landmarks. Thoughtfully upgraded with high-end finishes and the modern amenities today’s teams expect, the Russ Building delivers a dynamic environment where businesses can thrive and grow in a central, vibrant location.



high-rise floor plates  
from 5,000 - 11,000 SF



move-in ready  
suites available



on-site retail



350-space  
parking garage



bike storage,  
showers & lockers

# 93

Energy Star Score

# Platinum

LEED Certification



## Modern Amenities

**Tenant lounge, shared conference rooms, ground-floor coffee lounge, fitness center coming soon**

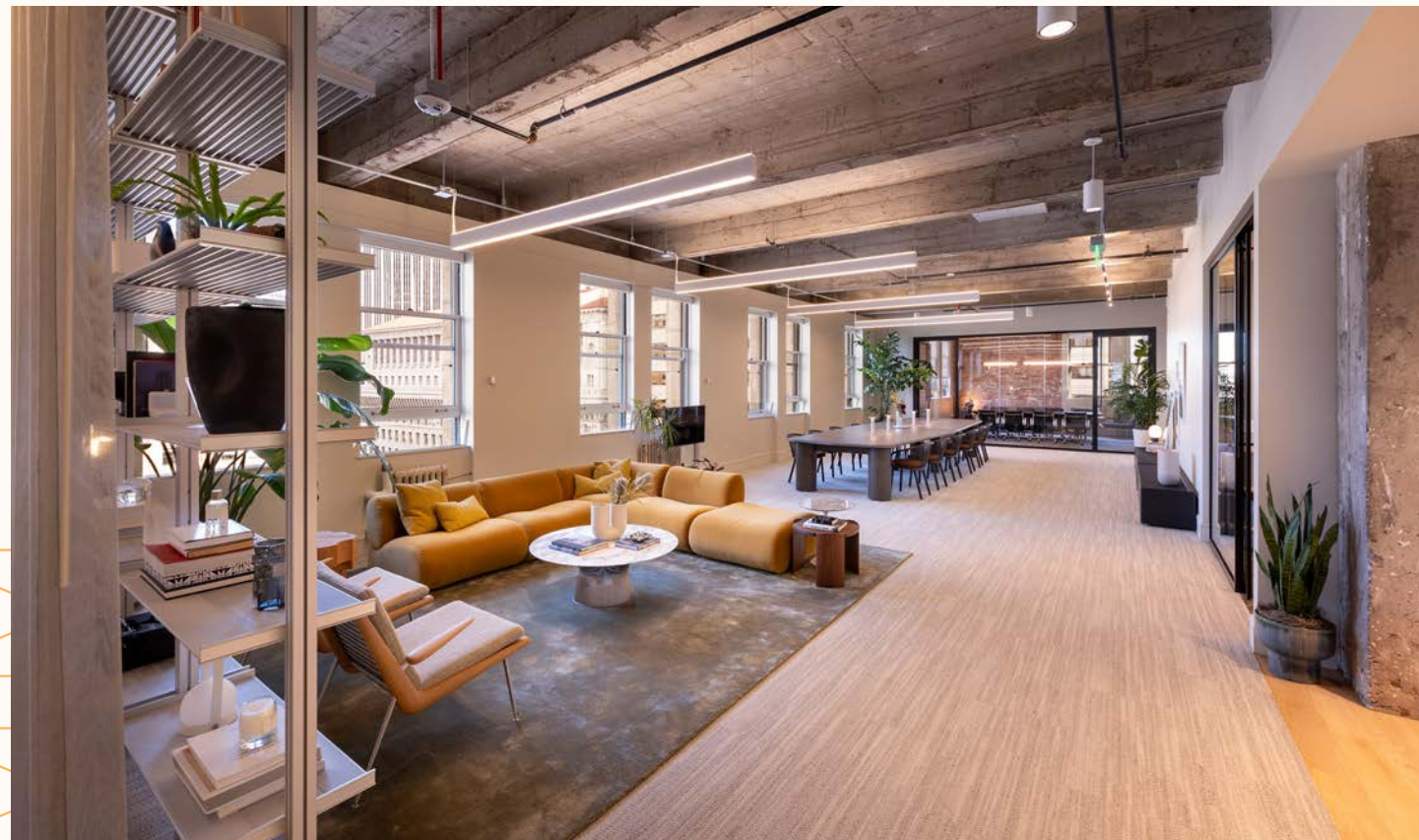


# Everyday Essentials, Elevated

Tailored to today's workforce, the Russ Building's on-site amenities create a seamless, convenient experience that enhances productivity, collaboration, and everyday comfort.

## ON-SITE AMENITIES INCLUDE:

- **Modern tenant lounge**
- **Shared conference rooms**
- **Ground-floor coffee lounge**
- **On-site retail: Joe & The Juice, Russ Building Barber Shop, Ladle & Leaf**

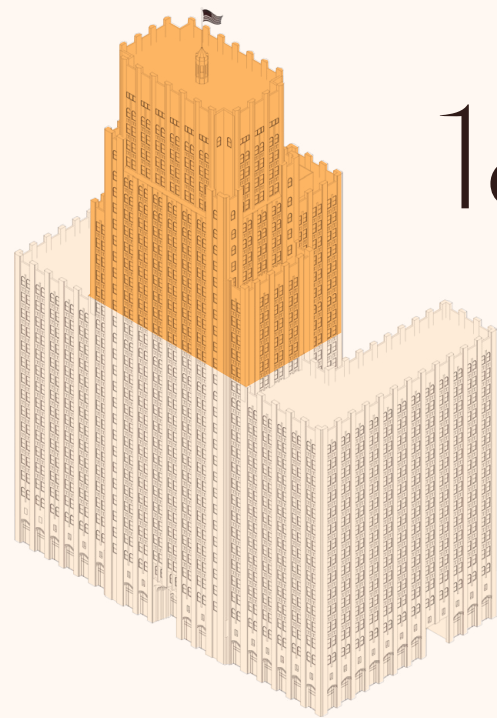


## Fitness Center Coming Soon



# Availabilities

## High-Rise



**FLOORS**  
**18-31**

Click suite number to view floor plan

SUITE	SQFT	FLOOR PLAN
1820	3,704	<a href="#">Download</a>
1830	4,029	<a href="#">Download</a>
1840	3,748	<a href="#">Download</a>
1900	11,323	<a href="#">Download</a>
2000	11,434	<a href="#">Download</a>
2300	6,620	<a href="#">Download</a>
2400	6,630	<a href="#">Download</a>
2700	6,628	<a href="#">Download</a>
2800	6,021	<a href="#">Download</a>
2900	5,659	<a href="#">Download</a>
3000	5,659	<a href="#">Download</a>
3100	5,659	<a href="#">Download</a>



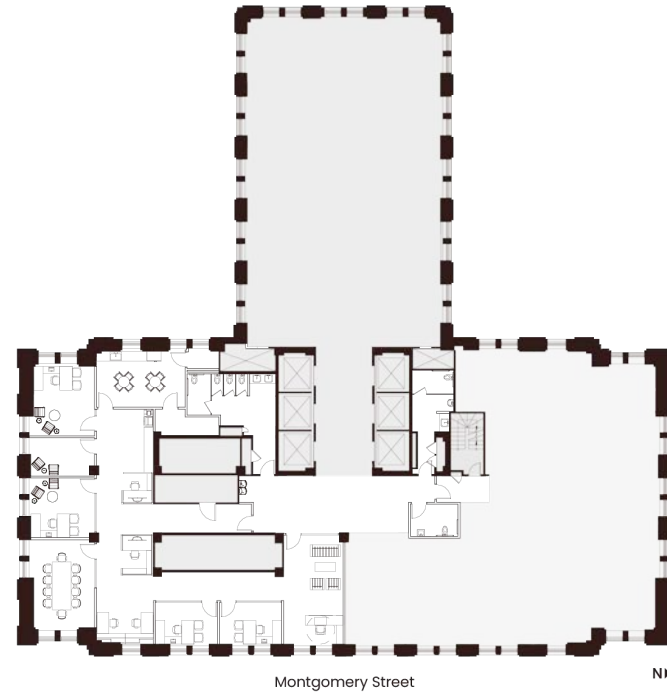
# Floor 18

3,704 SF - 4,029 SF

## Suite 1820

**~3,704 SQFT**  
**Hypothetical Private Office**

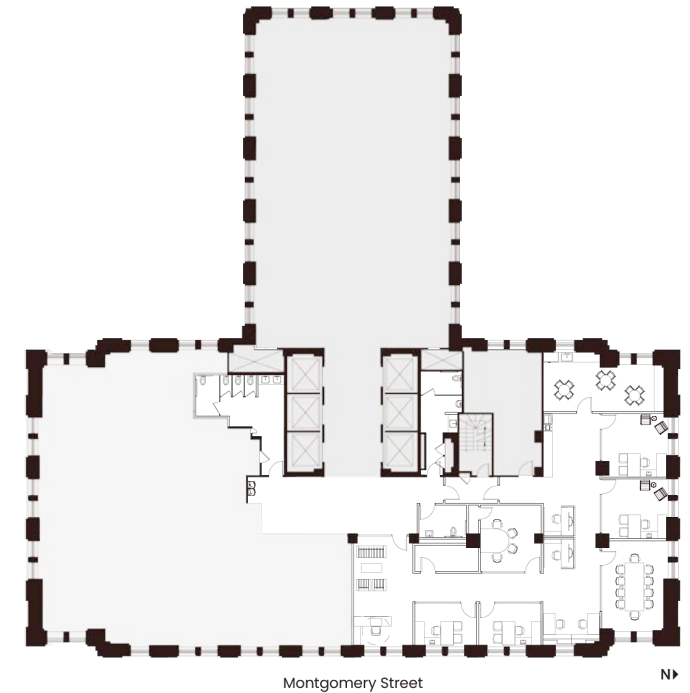
- 1 Reception Area
- 4 Private Offices
- 4 Workstations
- 1 Conference Room
- 1 Phone Room
- 1 Break Room
- 1 Copy Room
- 1 IT Room
- 1 Storage Room



## Suite 1840

**~3,748 SQFT**  
**Hypothetical Private Office**

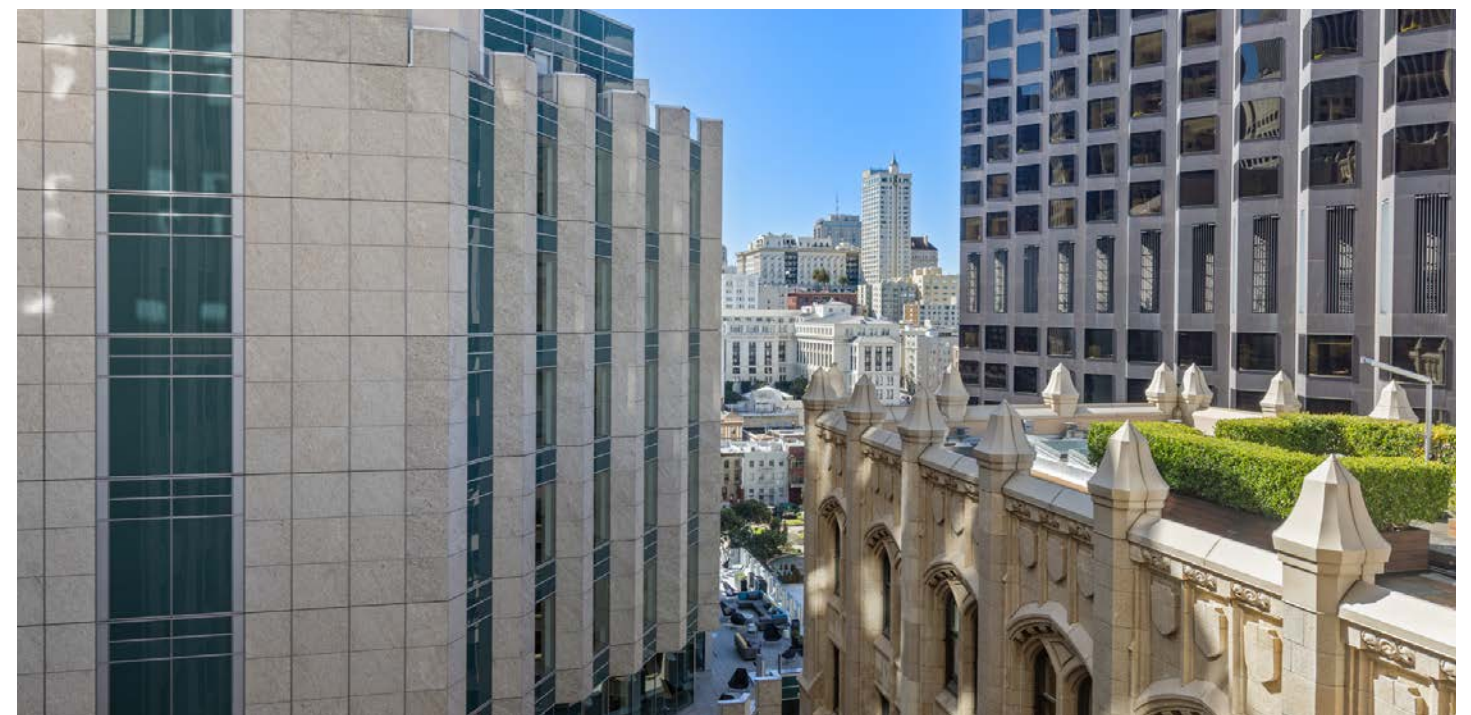
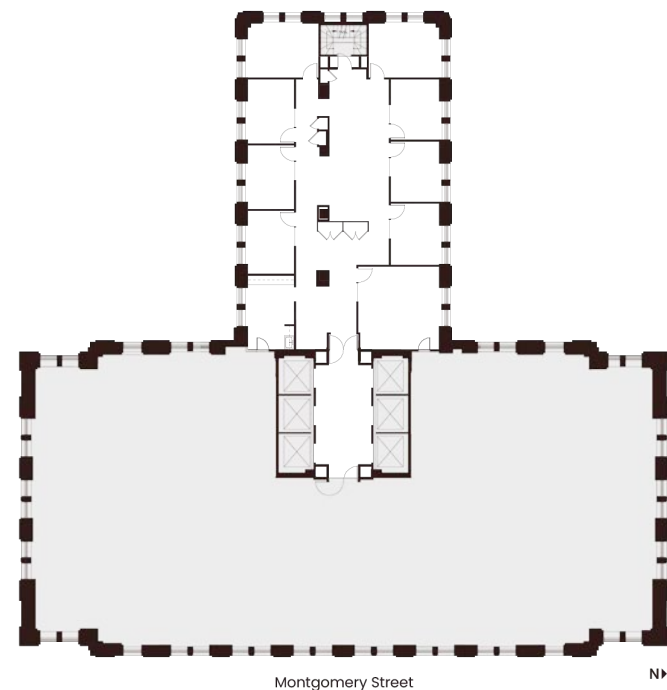
- 1 Reception Area
- 4 Private Offices
- 4 Workstations
- 1 Conference Room
- 1 Huddle Room
- 1 Break Room
- 1 Copy Room
- 1 IT Room
- 1 Storage Room



## Suite 1830

**~4,029 SQFT**  
**As Built**

- 1 Reception Area
- 2 Corner Offices
- 6 Window Line Offices
- 1 Conference Room
- 1 Break Room with Sink, Cabinetry & Refrigerator
- 1 Open Admin Area

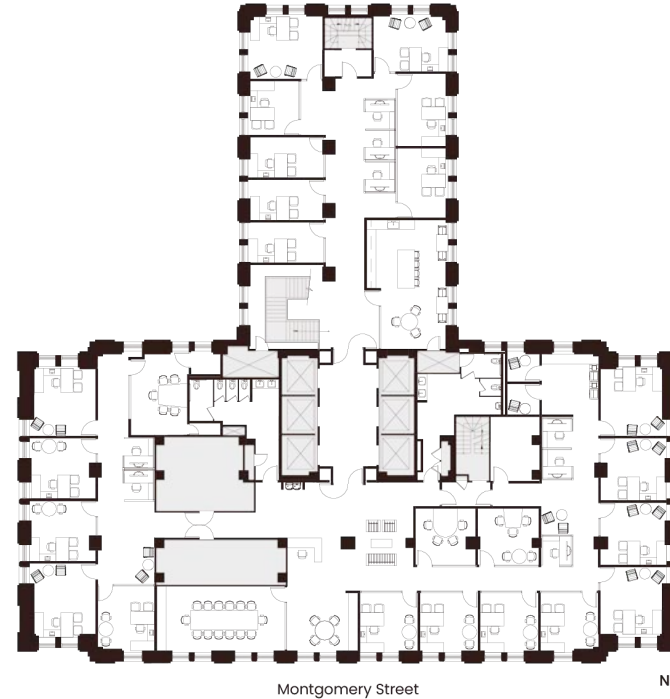


# Floor 19

Suite 1900 | 11,323 SF

## Hypothetical Private Office

- 22 Private Offices
- 6 Workstations
- 3 Conference Rooms
- 2 Huddle Rooms
- 2 Phone Rooms
- 1 Break Area
- 1 Copy Area
- 1 Reception Area
- 1 Server Room
- 2 Storage Rooms



## Hypothetical Open Office

- 81 Workstations
- 2 Conference Rooms
- 7 Huddle Rooms
- 4 Phone Rooms
- 1 Break Area
- 1 Copy Area
- 1 Reception Area
- 1 Server Room
- 2 Storage Rooms

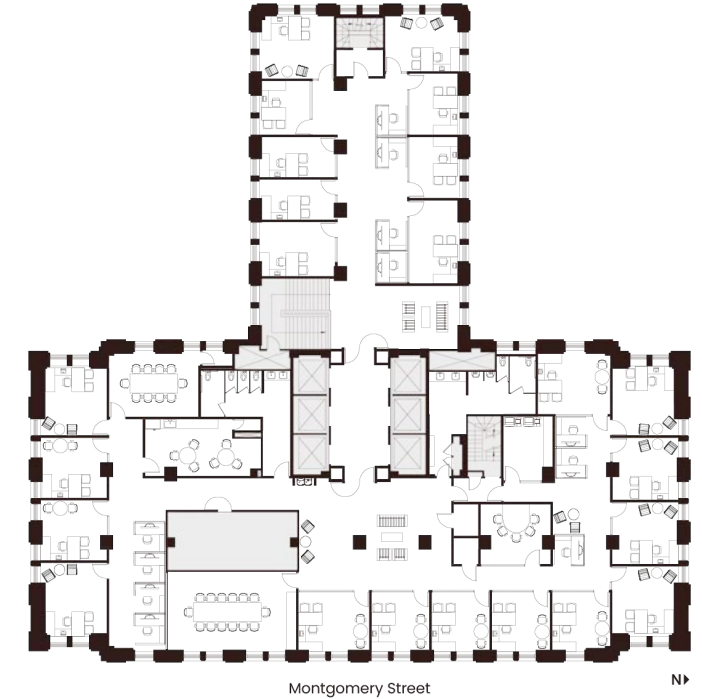


# Floor 20

Suite 2000 | 11,434 SF

## Hypothetical Private Office

- 24 Private Offices
- 9 Workstations
- 2 Conference Rooms
- 1 Huddle Room
- 1 Break Room
- 1 Phone Room
- 1 Copy Room
- 1 Server Room
- 2 Storage Rooms



## Hypothetical Open Office

- 89 Workstations
- 1 Conference Room
- 7 Huddle Rooms
- 4 Phone Rooms
- 1 Break Room
- 1 Copy Room
- 1 Server Room
- 2 Storage Rooms

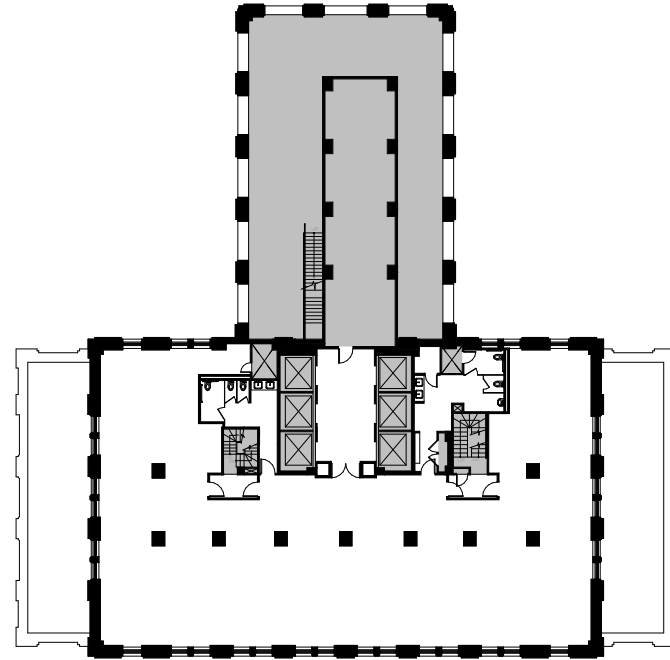


# Floor 23

## Suite 2300

~6,620 SF  
As Built

- Open Office Area

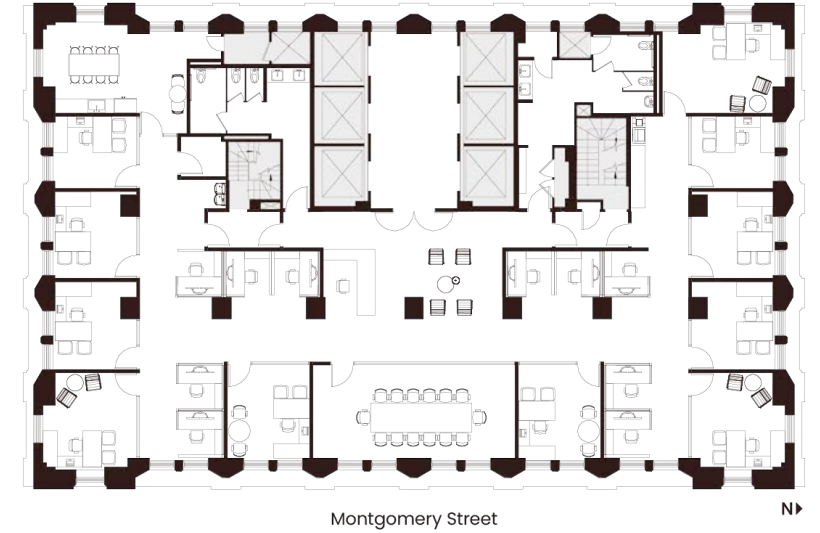


# Floor 27

## Suite 2700

~6,628 SF  
As Built

- 11 Private Offices
- 10 Workstations
- 1 Conference Room
- 1 Break Area
- 1 Copy Area
- 1 Reception Area
- 1 Server Room

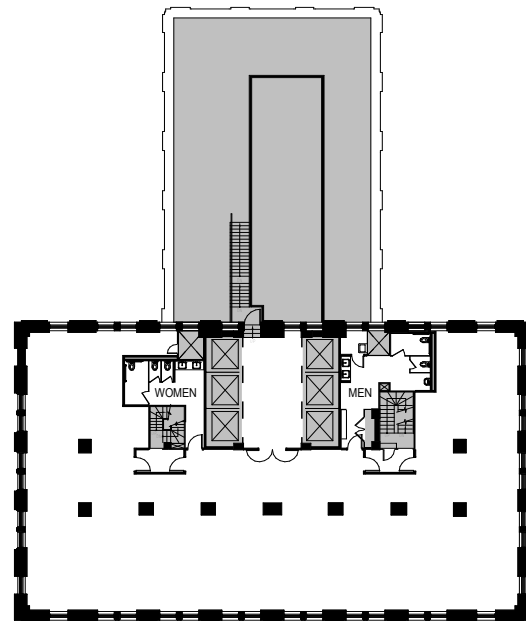


# Floor 24

## Suite 2400

~6,630 SF  
As Built

- Open Office Area

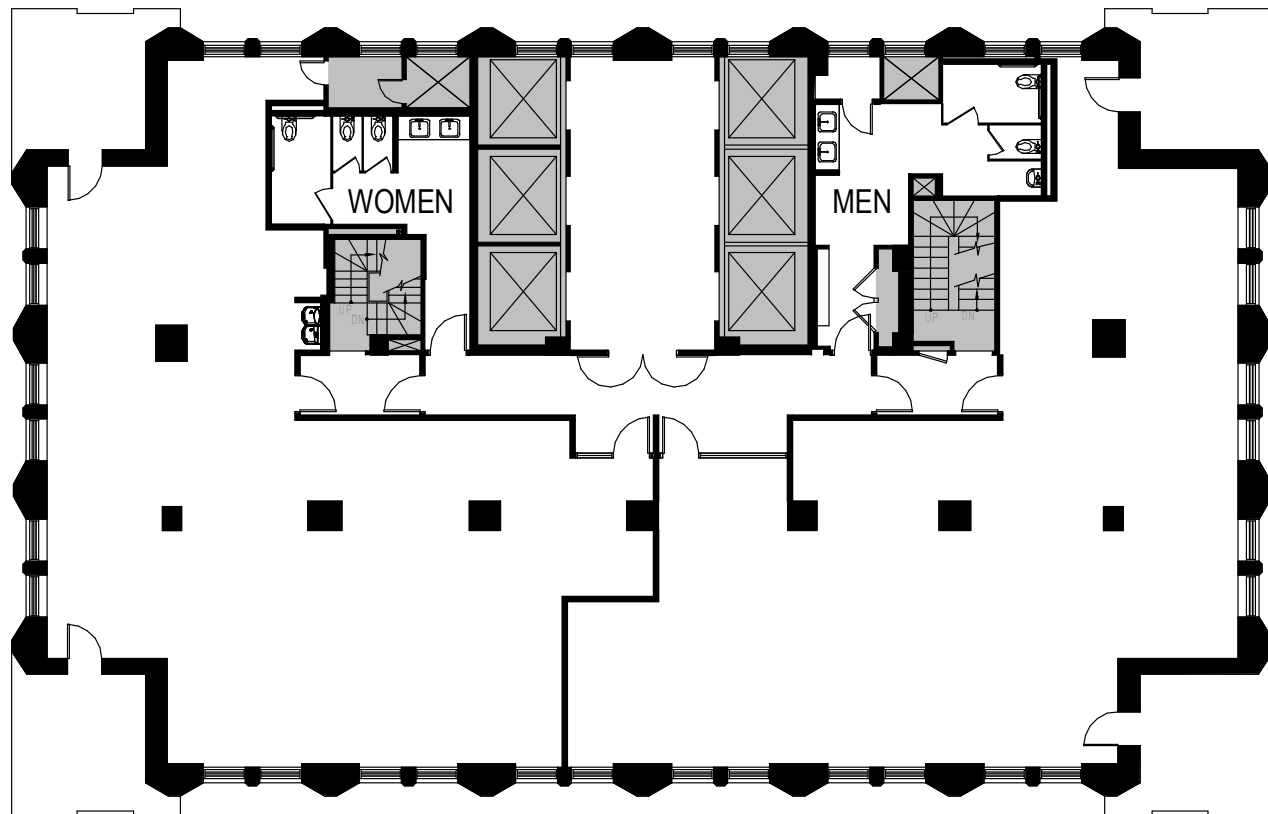


# Floor 28

Suite 2800 | 6,021 SF

## As Built

- Full Floor
- Open Office Area

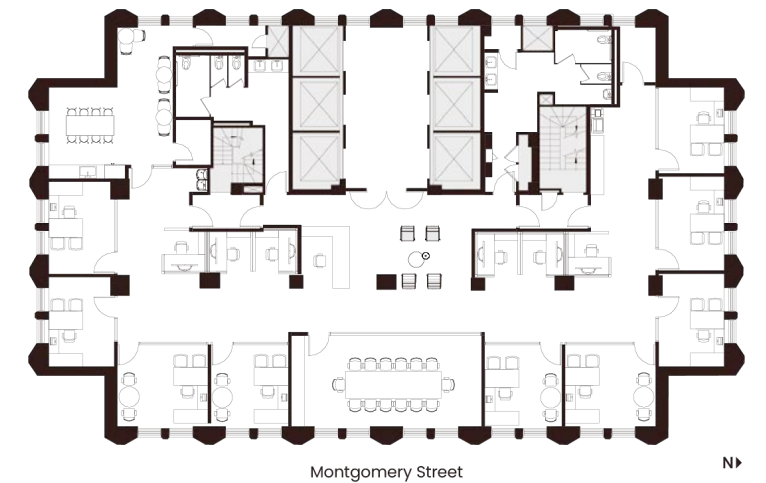


# Floor 29

Suite 2900 | 5,659 SF

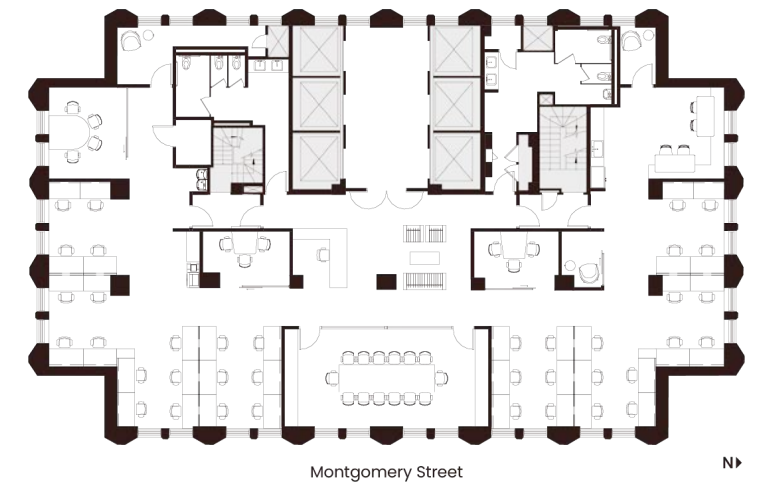
## Hypothetical Private Office

- 9 Private Offices
- 6 Workstations
- 1 Conference Room
- 1 Break Area
- 1 Copy Area
- 1 Reception Area
- 1 Server Room
- 2 Storage Rooms



## Hypothetical Open Office

- 38 Workstations
- 1 Conference Room
- 3 Huddle Rooms
- 1 Phone Room
- 1 Break Area
- 1 Copy Area
- 1 Reception Area
- 1 Server Room
- 2 Storage Rooms



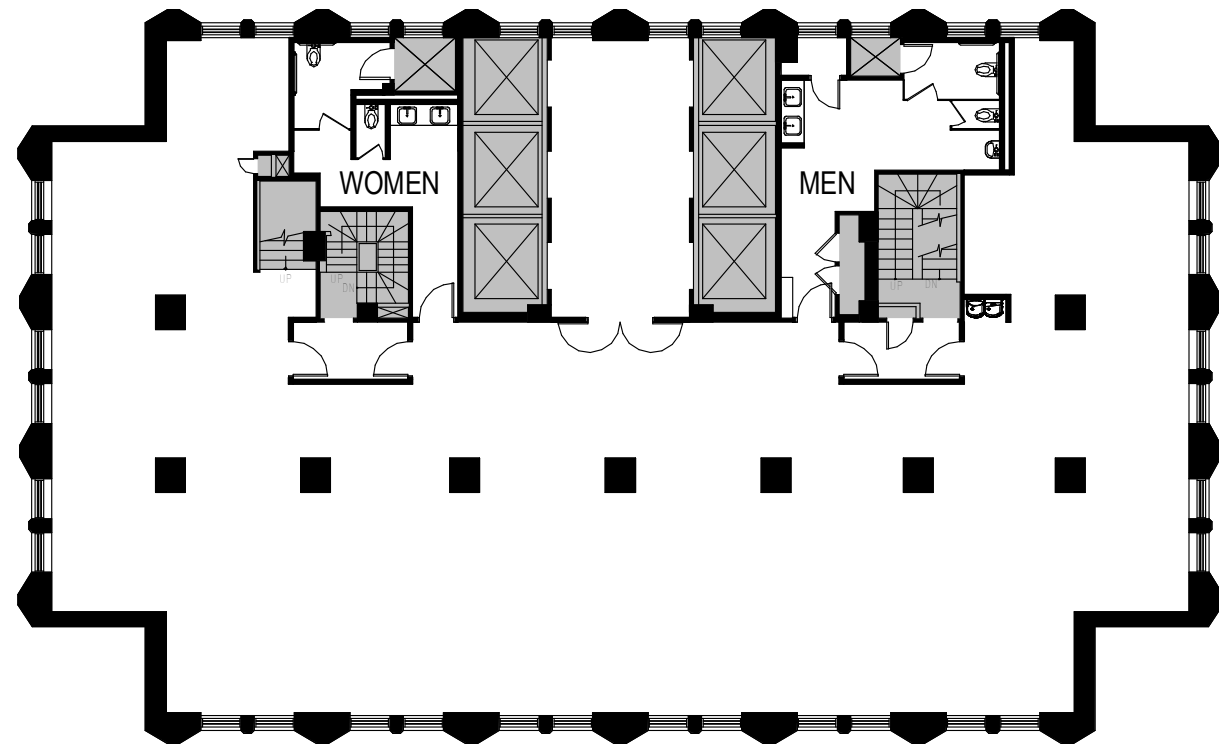
# Floor 30

Suite 3000 | 5,659 SF

---

## As Built

- Full Floor
- Open Office Area



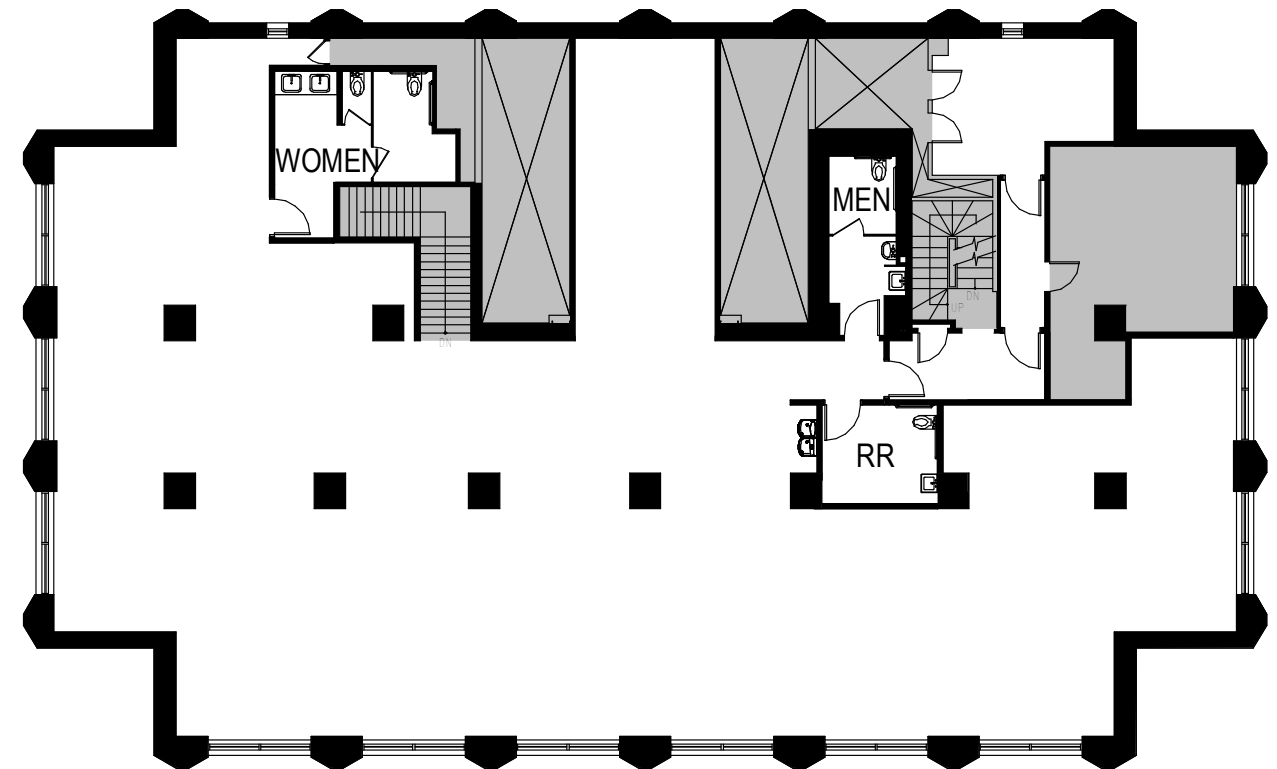
# Floor 31

Suite 3100 | 5,659 SF

---

## As Built

- Full Floor
- Open Office Area





# RUSS

BUILDING



Mark Anderson

Danny Pickard

Elena Saccone

**Vice Chairman**

[mark.anderson@cushwake.com](mailto:mark.anderson@cushwake.com)

+1 (415) 713-1014

Lic. #01325399

**Director**

[danny.pickard@cushwake.com](mailto:danny.pickard@cushwake.com)

+1 (415) 773-3572

Lic. #01975977

**Director**

[elena.saccone@cushwake.com](mailto:elena.saccone@cushwake.com)

+1 (630) 699-9687

Lic. #02151049

