

OFFICE OR MEDICAL OFFICE FOR SUBLEASE

9404 HIGHWAY 78

LADSON, SC 29456



BRIDGE
COMMERCIAL



Base Rental Rate: 32.00/RSF, NNN

Available SF: 3,000 - 6,390 SF

Address: 9404 Highway 78
Ladson, SC 29456

Premises: Suite 200

TI Allowance: Negotiable

Bridge Commercial makes no guarantees, representations or warranties of any kind, expressed or implied, including warranties of content, accuracy and reliability. Any interested party should do their own research as to the accuracy of the information. Bridge Commercial excludes warranties arising out of this document and excludes all liability for loss and damages arising out of this document.

MARK MATTISON SIOR, CCIM

+1 843 437 1545

mark.mattison@bridge-commercial.com

MATT JOHNSON

+1 985 237 2580

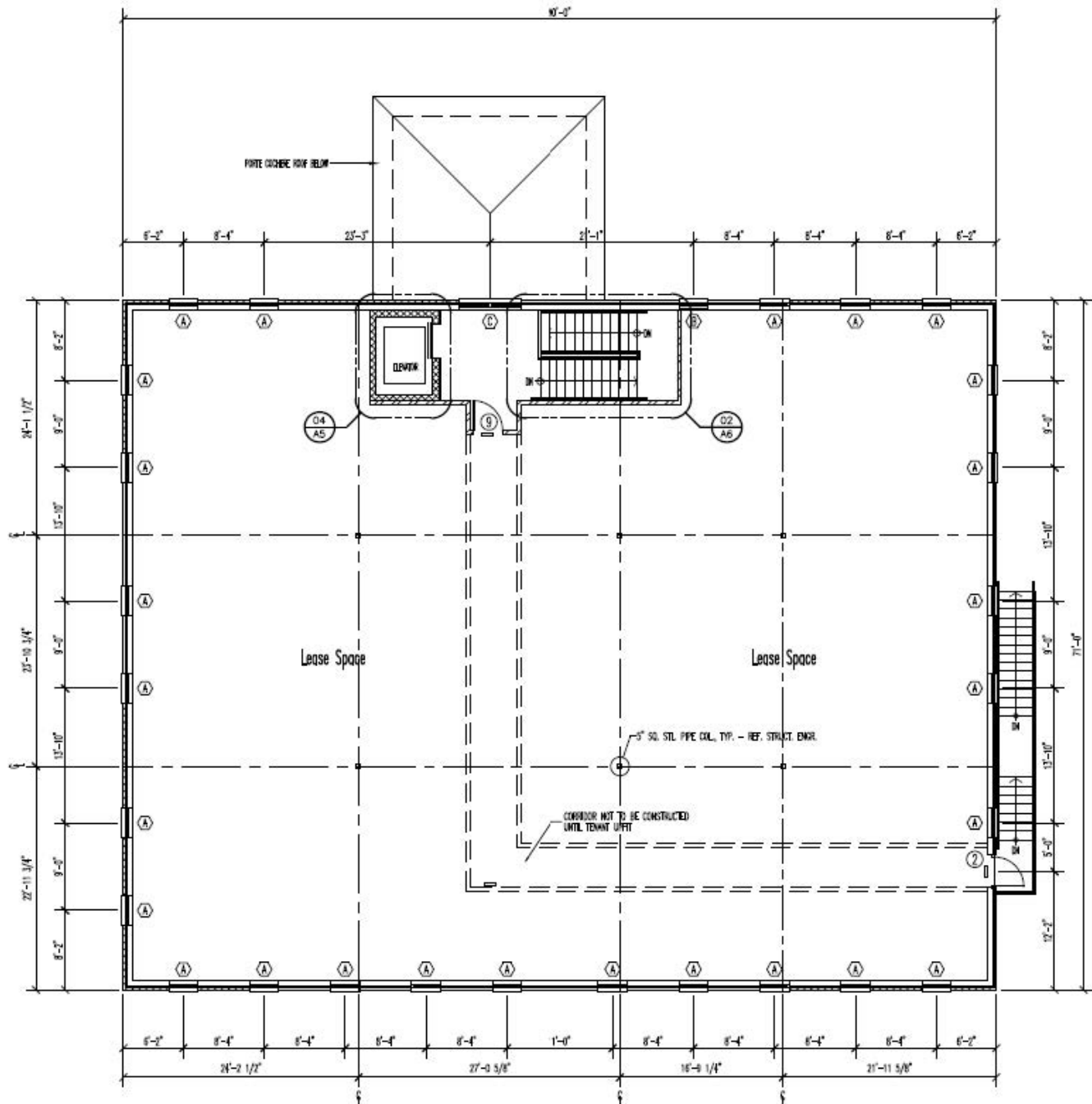
matt.johnson@bridge-commercial.com

WWW.BRIDGE-COMMERCIAL.COM

9404 Highway 78

Ladson, SC 29456

FLOOR PLAN



9404 Highway 78

Ladson, SC 29456

NEARBY AMENITIES



BRIDGE
COMMERCIAL





SOUTH CAROLINA DEPARTMENT
OF MOTOR VEHICLES



9404 HIGHWAY 78



TRIDENT
MEDICAL CENTER





CHARLESTON
SOUTHERN
UNIVERSITY









TRIDENT
MEDICAL CENTER







TRIDENT
MEDICAL CENTER

FUTURE REGIONAL
HOSPITAL



NOVANT
HEALTH





NEIGHBORHOOD
TAP HOUSE

9404 Highway 78

Ladson, SC 29456

LOCATION



BRIDGE
COMMERCIAL



OFFICE OR MEDICAL OFFICE FOR SUBLEASE

9404 HIGHWAY 78

LADSON, SC 29456



BRIDGE
COMMERCIAL



Base Rental Rate: 32.00/RSF, NNN

Available SF: 3,000 - 6,390 SF

Address: 9404 Highway 78
Ladson, SC 29456

Premises: Suite 200

TI Allowance: Negotiable

MARK MATTISON SIOR, CCIM

+1 843 437 1545

mark.mattison@bridge-commercial.com

MATT JOHNSON

+1 985 237 2580

matt.johnson@bridge-commercial.com

Bridge Commercial makes no guarantees, representations or warranties of any kind, expressed or implied, including warranties of content, accuracy and reliability. Any interested party should do their own research as to the accuracy of the information. Bridge Commercial excludes warranties arising out of this document and excludes all liability for loss and damages arising out of this document.