

**PROPOSED FLOOR PLAN/ EQUIPMENT LAYOUT**

3/16"=1'-0"

EQUIPMENT SCHEDULE			
QTY	ITEM DESCRIPTION	DIMENSIONS	MODEL NUMBER
1	CONT. VEGETABLE WASHER		
1	VEGETABLE DRYER		
3	BAKING OVEN		
3	STANDING CONE BLENDER		
5	STAINLESS STEEL PREP COUNTER (SIZES VARY)		
1	FLAT GRILL COOK TOP WITH FIRE SUPPRESSION SYSTEM		
7			
3	THREE TANK SINKS - STAINLESS STEEL BOWLS		
1	HAND SINK - STAINLESS STEEL BOWLS		
1	MOP SINK		
13			

WALL LEGEND	
	8" EXTERIOR CMU/CONC. WALL - TYPICAL EXTERIOR WALLS, EXISTING TO REMAIN
	INTERIOR OPENING TO INFILL
	TYPICAL NEW INTERIOR PARTITION WALL, SEE DETAILS & STRUCTURAL
	EXISTING 1-HR FIRE RATED WALL

AREA CALCULATIONS	
TOTAL EXISTING RESTAURANT	2,346 SQ. FT.

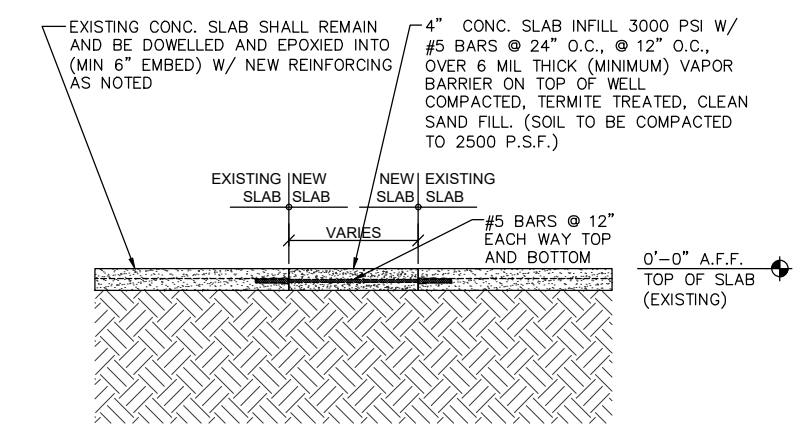
**CONSTRUCTION DOCUMENT NOTES**

- THESE PRINTS ARE AN INSTRUMENT OF SERVICE ONLY. ALL IDEAS, DESIGN AND ARRANGEMENTS INDICATED ARE THE PROPERTY OF ARCHITECT OF RECORD.
- WRITTEN DIMENSIONS ON THESE DRAWINGS SHALL HAVE PRECEDENCE OVER SCALE DIMENSIONS.
- CONTRACTOR SHALL VISIT THE JOB SITE, VERIFY AND BE RESPONSIBLE FOR ALL DIMENSIONS AND CONDITIONS OF THE PROJECT. ARCHITECT OF RECORD MUST BE NOTIFIED BY THE CONTRACTOR OF ANY CONDITIONS NOT SHOWN ON THESE DRAWINGS.
- CONTRACTOR SHALL PROMPTLY NOTIFY ARCHITECT OF RECORD IN WRITING OF THE EXISTENCE OF ANY OBSERVED VARIATIONS BETWEEN THE CONTRACT/ CONSTRUCTION DOCUMENTS AND/OR ORDINANCES OF REGULATORY AGENCIES. ERRORS, AMBIGUITIES AND/OR OMISSIONS RETURN TO ARCHITECT OF RECORD FOR CORRECTION BEFORE ANY PART OF THE WORK IS STARTED.
- CONTRACTOR SHALL SUPPLY DETAILS OF INTERIOR WINDOWS, DOORS AND EQUIPMENT

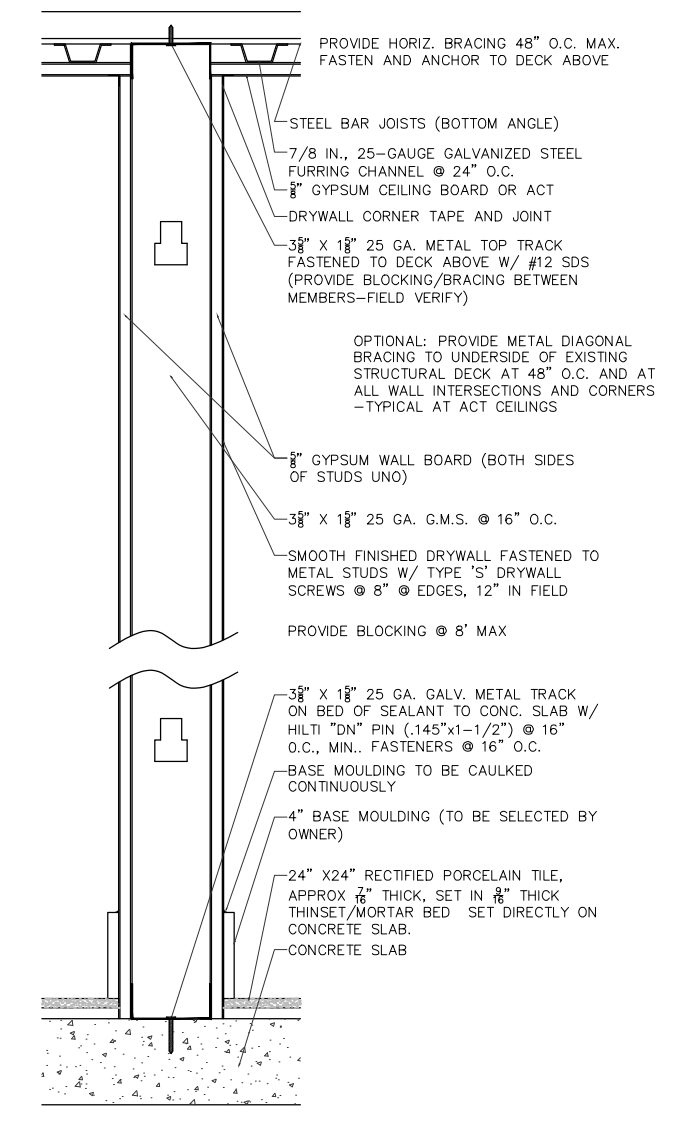
FLORIDA BUILDING CODE 2017 (EXISTING BUILDING / BUILDING 2017)  
 Florida Fire Prevention Code, Sixth Edition 2017 w/ DADE County Amendments, based on NFPA 1 Fire Code, 2017 Edition and NFPA 101 Life Safety Code, 2017 Edition & State Statutes

**FIRE NOTES**

- SUITE NUMBERS SHALL BE A MIN. OF 3' NUMERALS, CONTRASTING TO ITS BACKGROUND
- PROVIDE 2008.B TEST ON FIRE SPRINKLER SYSTEM
- FIRE SPRINKLER FINAL IS REQUIRED BEFORE FIRE FINAL



**SLAB REPAIR DETAIL**  
 NTS



**TYPICAL INTERIOR PARTITION DETAIL**  
 NTS