

388 Bridge Street

Downtown Brooklyn Space for Lease

Bridge Street, between Willoughby and Fulton Streets

Premises	Size	Ceiling Heights	Frontage	Features
Ground Floor	3,500 sf	17'	37' on Bridge Street	<ul style="list-style-type: none">• Dedicated ADA accessible elevators• Potential future expansion opportunity
4th Floor	12,058 sf + outdoor space (2,154 sf)	14'	Possession Immediate	
5th Floor	7,879 sf	14'		
6th Floor	9,392 sf + outdoor space	14'		



Neighboring Retailers

- DeKalb Market
- Macy's, H&M
- Trader Joe's
- Target
- Sweetgreen
- NYU Metrotech
- Fulton Street Mall

Comments

- Opportunity for immediately available retail, professional, and/or medical office space at the base of a 371-unit residential tower
- Located less than a block from NYU Tandon School of Engineering (5,300 students) and St. Francis College (2,400 students)
- Adjacent to the Jay Street Metrotech subway station servicing the **A C F R** trains with over 13M annual passengers

Ryan P. Condren
+1 212 220 4117
ryan.condren@jll.com

George Danut
+1 212 220 4121
george.danut@jll.com

City Views



Reception Area



4th Floor

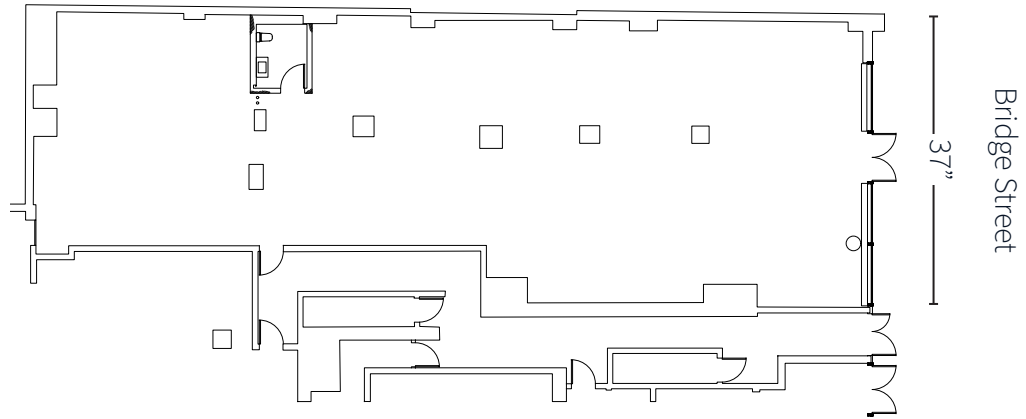


6th Floor



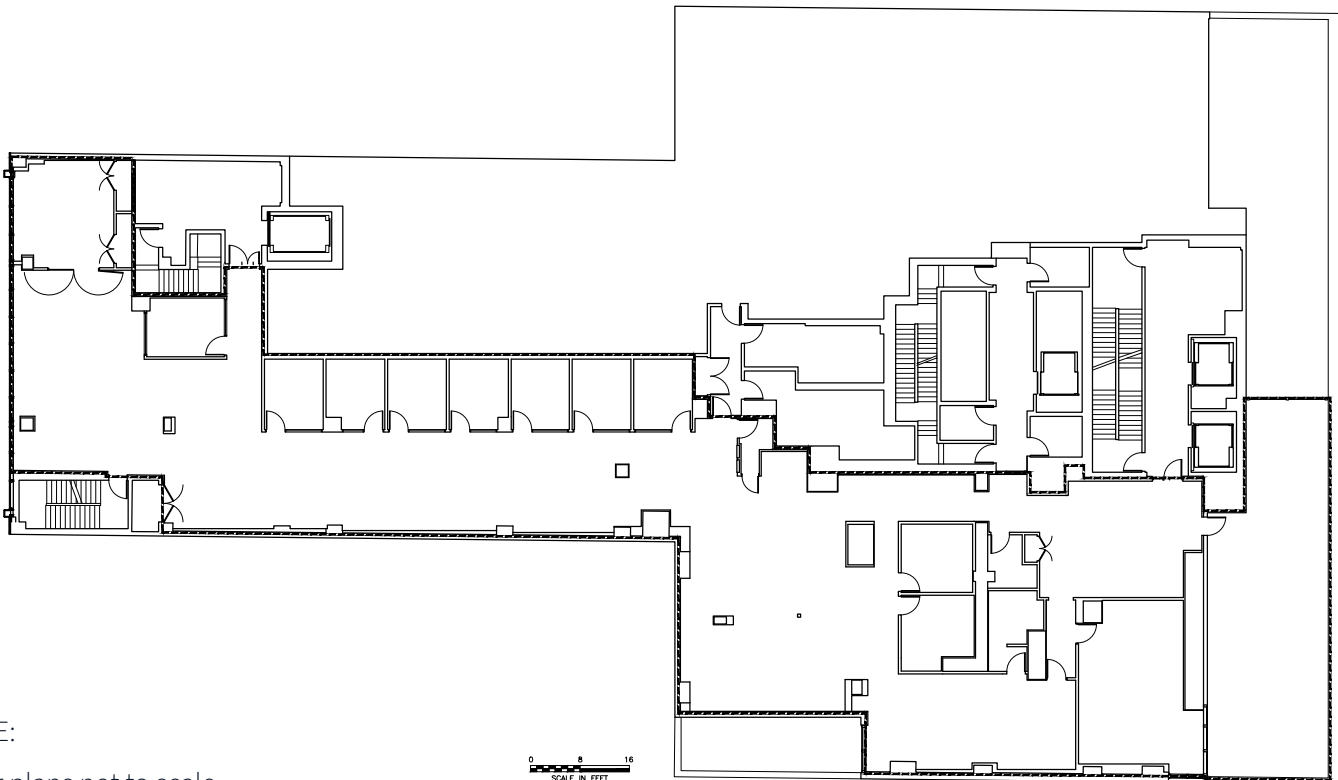
Ground Floor

3,500 sf



4th Floor

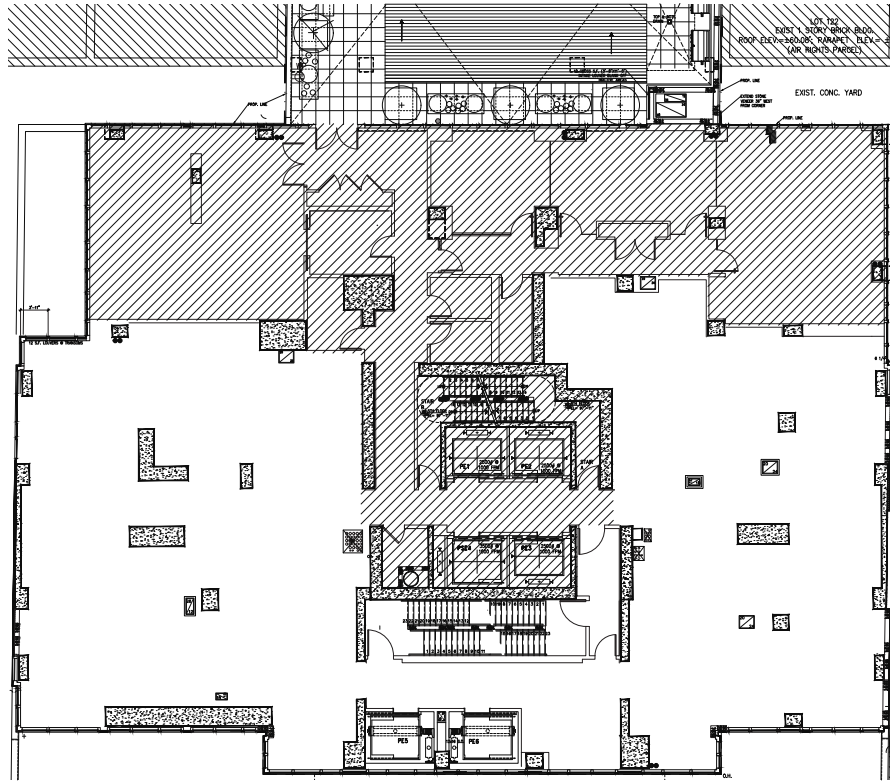
12,058 sf + outdoor space (2,154 sf)



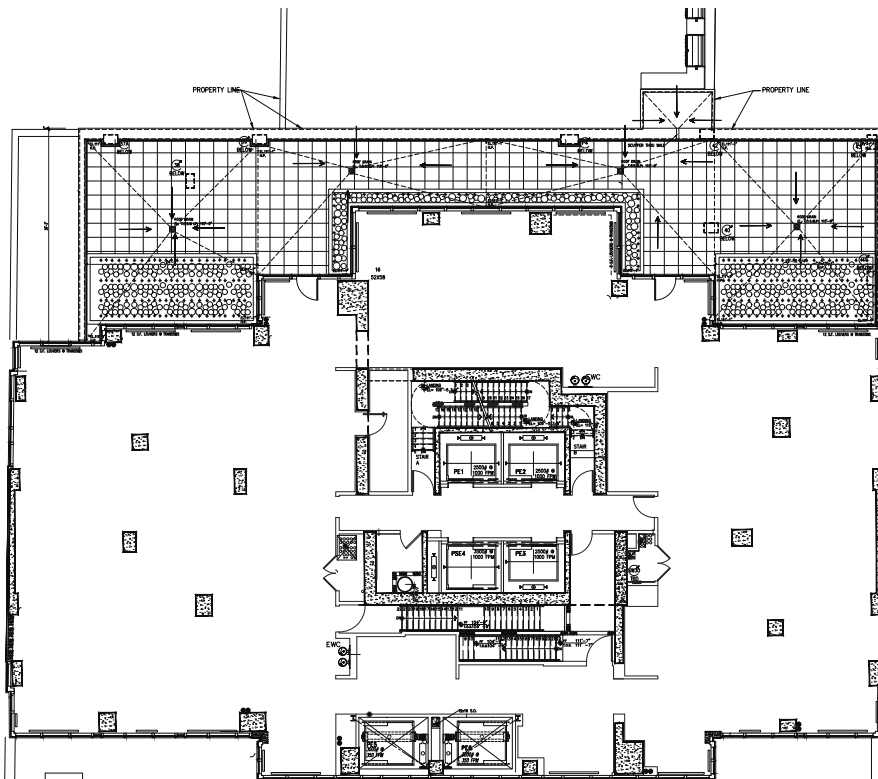
NOTE:

Floor plans not to scale

5th Floor
7,879 sf



6th Floor
9,392 sf + outdoor space



NOTE:
Floor plans not to scale

Downtown Brooklyn Access

